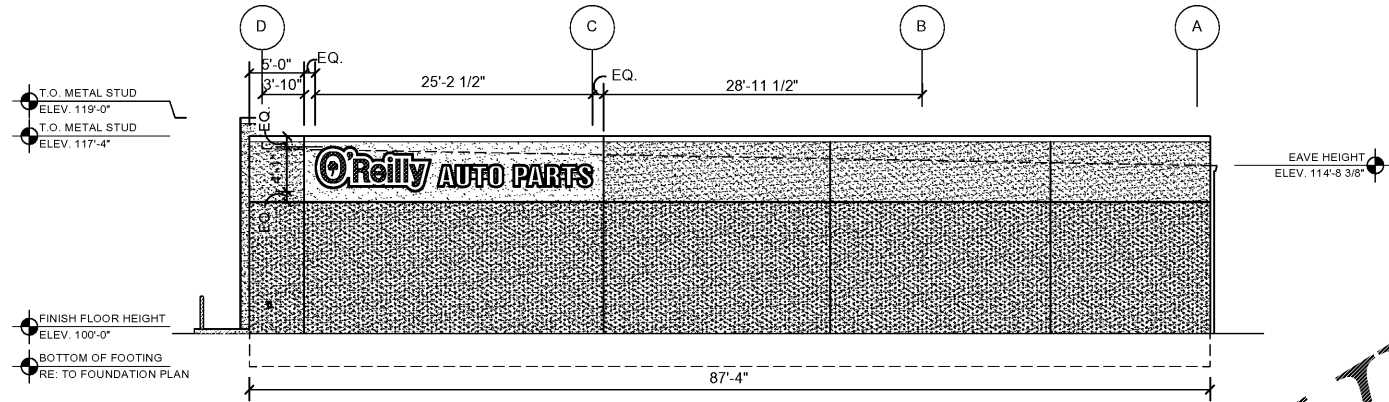


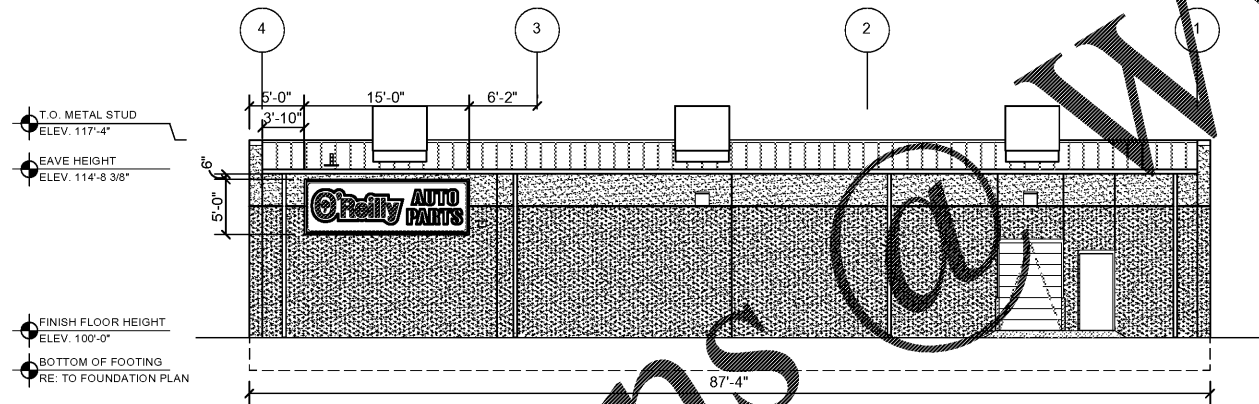
1 FRONT EXTERIOR ELEVATION

SG2.1 SCALE: 1/8" = 1'-0"



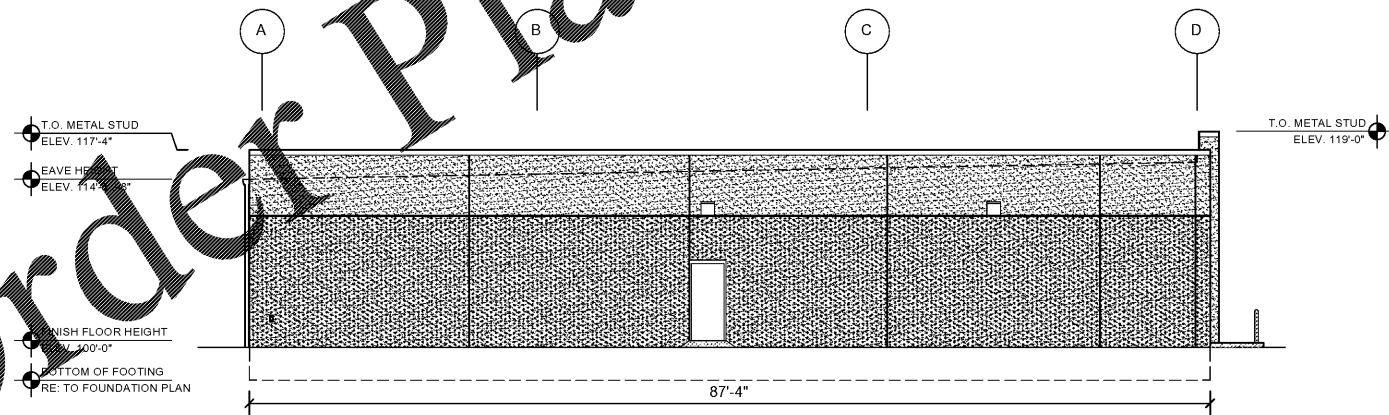
2 RIGHT EXTERIOR ELEVATION

SG2.1 SCALE: 1/8" = 1'-0"



3 REAR EXTERIOR ELEVATION

SG2.1 SCALE: 1/8" = 1'-0"



4 LEFT EXTERIOR ELEVATION

SG2.1 SCALE: 1/8" = 1'-0"

BUILDING SIGN SCHEDULE

FRONT EXTERIOR ELEVATION:
TYPE: OR 49' / 24" AP LINEAR
DETAIL: REFER TO S/SG2.1

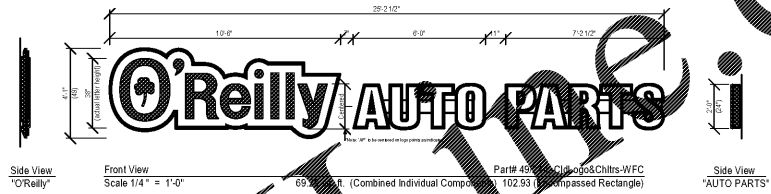
RIGHT EXTERIOR ELEVATION:
TYPE: OR 49' / 24" AP LINEAR
DETAIL: REFER TO S/SG2.1

LEFT EXTERIOR ELEVATION:
TYPE: NO SIGN
DETAIL:

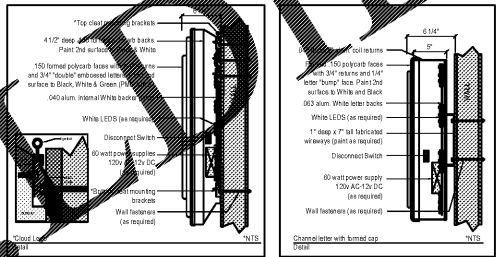
REAR EXTERIOR ELEVATION:
TYPE: OR CABINET 5' / 15" AP STACKED
DETAIL: REFER TO S/SG2.1

GENERAL NOTES

- A CONTACT OWNER'S OR TENANT'S DESIGNATED PROJECT ADMINISTRATOR FOR QUESTIONS OR CLARIFICATIONS.
- B BUILDING PERMANENT SIGNAGE OWNER FURNISHED AND INSTALLED. (REFER TO SCOPE OF WORK SCHEDULE). SIGNAGE GRAPHICS PROVIDED FOR REFERENCE ONLY (N.I.C.) AND CONTRACTOR'S COORDINATION WITH SPECIFIC PROJECT CONSTRUCTION CONDITIONS. CONTRACTOR TO PROVIDE BACK AND ROUGH-IN ELECTRICAL AS REQUIRED FOR INSTALLATION. REFER TO A2.1 FOR EXTERIOR BUILDING FINISH.
- C REQUIRED GOVERNMENTAL PERMITS FOR PERMANENT TYPE SIGNAGE TO BE PROVIDED BY OWNER OR OTHERS (N.I.C.).



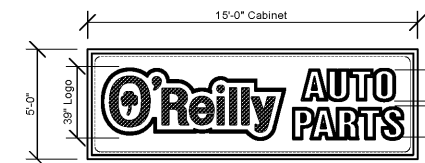
"O'Reilly" Cloud Logo with "AP" Formed Caps and Channel Returns
"O'Reilly" Cloud Logo is formed polyurethane with double embossed front with 2nd surface painted graphics. Paint match to: Green (PMS# 342c), Black and White.
"AP" to have formed polycarb caps and letter "bumps" 1/8" aluminum channel returns. 2nd surface Black and White paint. WHITE LED Illumination.



Formed Cloud Logo with "AP" Formed Caps & Channel Returns
Part# 49/24-L-CldLogo&Chltrs-WFC

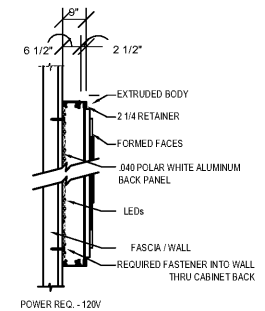
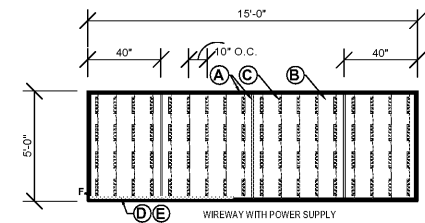
5 FRONT WALL SIGN DETAILS

SG1.1 SCALE: 1/4" = 1'-0"



SINGLE FACE SIGN PART#5-15-SIGNCABINET-PE-SF
N.T.S. 75.00 SQ. FT.

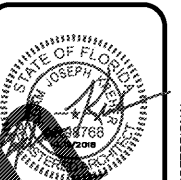
- NOTES:
- FACE IS FORMED OUT OF LEXAN WITH 2" DRAW. "O'REILLY" GRAPHICS ARE DOUBLE EMBOSSED. "AUTO PARTS" COPY IS SINGLE EMBOSSED WITH PAINTED GRAPHICS ON 2ND SURFACE. GRAPHICS TO MATCH PMS 200c RED, PMS 342c GREEN, BLACK AND WHITE.
 - SINGLE FACE EXTRUDED CABINET WITH 2 1/4" RETAINERS. VERTICAL GE (GESS71-1) TETRA POWER STRIP WHITE LED ILLUMINATION.
PAINT CABINET TO: GLOSS BLACK



- LAYOUT N.T.S.
- A 9" DEEP EXTRUDED CABINET WITH 1" SQUARE TUBE SUPPORT STRUCTURE AND 2 1/4" RETAINERS
 - B .040 PRE-PAINTED POLAR WHITE ALUMINUM BACKER PANEL
 - GE-TETRA POWERSTRIP SS WHITE LEDs. PART#GESS71-1 (7100 K) 5 LEDs PER MODULE (SINGLE SIDED MODULES); MODULES ON 10" CENTERS, 72 TOTAL MODULES.
 - GE-TETRA POWER SUPPLIES. PART #GEPS12-60U-NA 12 VOLT 50/60HZ LOAD CAPACITY: 18 MODULES PER POWER SUPPLY. TOTAL OF FOUR PER DISPLAY.
 - D FABRICATED ALUMINUM INTERNAL POWER SUPPLY WIREWAY.
 - E DISCONNECT SWITCH WITH INTERNAL JUNCTION BOX.

6 FRONT WALL SIGN DETAILS

SG1.1 SCALE: 1/4" = 1'-0"



ARCHITECT OF RECORD
ADAM KREHER
ARCHITECT LICENSE NUMBER
A098766

SHEETS BEARING THIS SEAL ARE AUTHENTICATED. RESPONSIBILITY FOR ALL OTHER PLANS, SPECIFICATIONS OR INSTRUMENTS ARE DISCLAIMED.

torgerson DESIGN partners
116 N. 2ND AVENUE
OZARK, MO 65721
P (417) 581-8889
F (417) 581-9002

PROJECT:
NEW O'REILLY AUTO PARTS STORE
463352 SR 200
YULEE, FL 32097

O'Reilly AUTO PARTS
CORPORATE OFFICES
333 SOUTH PATTERSON
SPRINGFIELD, MISSOURI 65802
(417) 882-2674 TELEPHONE

DRAWN BY: NO
CHECKED BY: KR
DATE: 10/19/2018
REVISION:
PROJECT NUMBER: 18155-YUL
SHEET NUMBER: **SG2.1**