

ALL PANELBOARDS, TRANSFORMERS, TRANSFER SWITCH KIT AND DISCONNECTS WILL BE SUPPLIED BY THE OWNER (O'REILLY). ELECTRICAL GEAR SHALL BE DIRECT ORDERED AND/OR RELEASED FROM THE LISTED ELECTRICAL EQUIPMENT DISTRIBUTOR. SEE 'ELECTRIC SERVICE RESPONSIBILITIES' FOR ADDITIONAL CLARIFICATION:

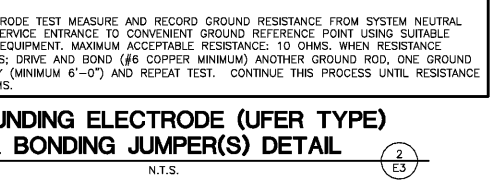
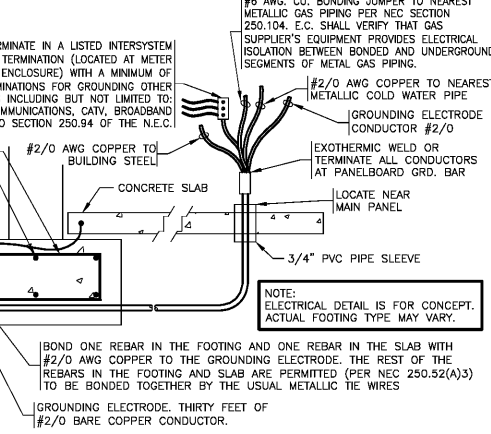
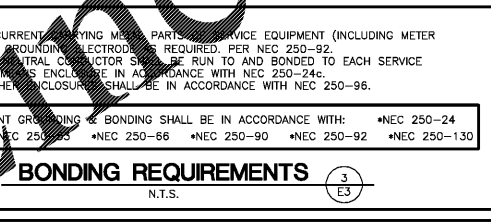
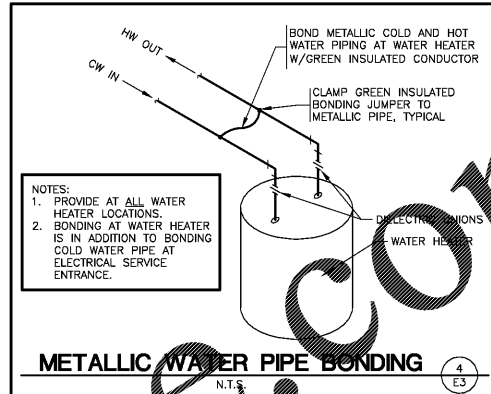
GRAYBAR ELECTRIC CO. INC.  
11885 LACKLAND ROAD  
ST. LOUIS, MO. 63146

GRAYBAR O'REILLY TEAM  
EMAIL: orreilly@graybar.com  
TOLL FREE: (314) 573-2080

MP PANELBOARD SCHEDULE																			
MAINS: 225A MAIN LUGS ONLY				VOLTAGE: 208				ACCESSORIES:											
TYPE: SQUARE D, NQ				PHASE: 3Φ, 4W				1. EQUIPMENT GROUND BAR											
MOUNTING: SURFACE				WIDTH: 20				2. ISOLATED GROUND BAR											
SCCR: 22K AIC				SPACE(S): 42				3. * "SQ. D" #001PA - WITH LOCKABLE CLIPS											
								4. SUB FEED LUGS											
CKT	CKT BRK	WIRE	LOAD DESCRIPTION	(KVA)	A(KVA)	B(KVA)	C(KVA)	(KVA)	LOAD DESCRIPTION	WIRE	CKT BRK	CKT							
1	20A/1P	#12s	LIGHTING/EXHAUST FAN	0.51	0.51				SPACE			2							
3	20A/1P	#12s	LIGHTING	1.08		1.08			SPACE			4							
5	20A/1P	#12s	LIGHTING	1.32			1.32		SPACE			6							
7	20A/1P	#12s	LIGHTING	1.24		1.24			SPACE			8							
9	20A/1P	#12s	LIGHTING	1.21		1.21			SPACE			10							
11	20A/1P	#12s	LIGHTING	.77			0.77		SPACE			12							
13	20A/1P	#12s	LIGHTING	.74		0.74			SPACE			14							
15			SPACE	0		0.00			SPACE			16							
17			SPACE	0		0.00			SPACE			18							
19	*20A/1P	#12s	LED SIGN BUILDING	1.20	1.20				SPACE			20							
21	*20A/1P	#12s	LED SIGN BUILDING	1.20		1.20			SPACE			22							
23	20A/1P	#12s	BUILDING LIGHTING	0.34			0.34		SPACE			24							
25	20A/1P	#12s	SITE LIGHTING	0.15	0.15				SPACE			26							
27	20A/1P	#12s	SITE LIGHTING	0.31		0.31			SPACE			28							
29	20A/1P	#12s	SITE SIGN	1.30			1.30		SPACE			30							
31	20A/1P	#12s	SITE SIGN	1.30	1.30				SPACE			32							
33	*20A/1P	#12s	LED SIGN BUILDING	1.20	1.20				SPACE			34							
35			SPACE	0.03		0.03			SPACE			36							
37	20A/3P	#12s	GRIDPOINT 1204	0.03	0.03				SPACE			38							
39			SPACE	0.03		0.03			SPACE			40							
41	20A/1P	#12s	XFMR J-BOX	0.60			1.20	0.60	LCP	#12s	20A/1P	42							
TOTAL PHASE A (KVA)				TOTAL PHASE B (KVA)				TOTAL PHASE C (KVA)				TOTAL CONNECTED LOAD (KVA)				TOTAL AMPS			
5.17				5.03				4.96				15.16				42.08			
LIGHTING=9.27				EXTERIOR LIGHTING=4.60															

PLP PANELBOARD SCHEDULE																			
MAINS: 225A MAIN LUGS ONLY				VOLTAGE: 208				ACCESSORIES:											
TYPE: SQUARE D, NQ				PHASE: 3Φ, 4W				1. EQUIPMENT GROUND BAR											
MOUNTING: SURFACE				WIDTH: 20				2. ISOLATED GROUND BAR											
SCCR: 22K AIC				SPACE(S): 42				3. ** GFI BREAKER CKT. #16 & #23											
								4. ** "SQ. D" #001PAF CKT. #33											
CKT	CKT BRK	WIRE	LOAD DESCRIPTION	(KVA)	A(KVA)	B(KVA)	C(KVA)	(KVA)	LOAD DESCRIPTION	WIRE	CKT BRK	CKT							
1	20A/1P	#10s	LATHE	1.70	2.20			0.50	CHECK IN RECEPT. (I.G.)	#12s	20A/1P	2							
3	20A/1P	#10s	CUTOFF SAW	1.73		1.91		0.18	BATTERY RACK RECEPT.	#10s	20A/1P	4							
5	20A/1P	#12s	CRIMPER	1.77			1.95	0.18	BATTERY RACK RECEPT.	#10s	20A/1P	6							
7	20A/1P	#12s	RECEPTACLES	0.54	0.90			0.36	BREAK AREA RECEPTS.	#12s	20A/1P	8							
9	20A/1P	#10s	STARTER/ALT. TESTER	1.68		1.68		0	SPACE			10							
11	20A/1P	#10s	STARTER/ALT. TESTER	1.68			2.40	0.72	RTU RECEPTACLES	#12s	20A/1P	12							
13	20A/1P	#10s	STARTER/ALT. TESTER	1.64	2.00			0.36	RECEPTACLES	#12s	20A/1P	14							
15	20A/1P	#12s	RECEPTACLES	0.36		2.11		1.75	COKE MACHINE (ONLY)	#12s	**20A/1P	16							
17	20A/1P	#12s	ISOLATED GRD. RECEPTS.	0.36		0.72	0.36		ISOLATED GRD. RECEPTS.	#12s	20A/1P	18							
19	20A/1P	#12s	RECEPTACLES	0.18	0.54			0.36	ISOLATED GRD. RECEPTS.	#12s	20A/1P	20							
21	30A/1P	#10s	BATTERY BACKUP (I.G.)	3.00		3.36		0.36	ISOLATED GRD. RECEPTS.	#12s	20A/1P	22							
23	**20A/1P	#12s	WATER COOLER RECEPT.	0.90			1.26	0.36	ISOLATED GRD. RECEPTS.	#12s	20A/1P	24							
25	20A/1P	#12s	RECEPTACLES	1.00	1.36			0.36	ISOLATED GRD. RECEPTS.	#12s	20A/1P	26							
27	20A/1P	#12s	SECURITY	0.50		0.86		0.36	ISOLATED GRD. RECEPTS.	#12s	20A/1P	28							
29			SPACE	0		0.36		0.36	ISOLATED GRD. RECEPTS.	#12s	20A/1P	30							
31			SPACE	0	0.36			0.36	ISOLATED GRD. RECEPTS.	#12s	20A/1P	32							
33	**20A/1P	#12s	TANK WATER HEATER	1.65		2.01		0.36	ISOLATED GRD. RECEPTS.	#12s	20A/1P	34							
35	20A/1P	#12s	ISOLATED GRD. RECEPTS.	0.36		0.72	0.36		ISOLATED GRD. RECEPTS.	#12s	20A/1P	36							
37			SPACE	0	0.50			0.50	FRINTER RECEPTACLE	#12s	20A/1P	38							
39			SPACE	0	0.72			0.72	PHONE EQUIP. RECEPTS.	#12s	15A/1P	40							
41			SPACE	0		0.90	0.90		RECEPTACLES	#12s	20A/1P	42							
TOTAL PHASE A (KVA)				TOTAL PHASE B (KVA)				TOTAL PHASE C (KVA)				TOTAL CONNECTED LOAD (KVA)				TOTAL AMPS			
7.86				12.65				8.31				28.82				80.00			
WATER HEATER=1.65				RECEPTACLES=13.07				MP & PLP AMPS=122.08											

MDP PANELBOARD SCHEDULE																			
MAINS: 600A MAIN LUGS ONLY				VOLTAGE: 208				ACCESSORIES:											
TYPE: SQUARE D, I-LINE				PHASE: 3Φ, 4W				1. EQUIPMENT GROUND BAR											
MOUNTING: SURFACE				WIDTH: 20				2. * MUST BE TYPE "HACR" BREAKER											
SCCR: 22K AIC				SPACE(S): 42				3. NEMA 3R, LOCKABLE ENCLOSURE											
CKT	CKT BRK	WIRE	LOAD DESCRIPTION	(KVA)	A(KVA)	B(KVA)	C(KVA)	(KVA)	LOAD DESCRIPTION	WIRE	CKT BRK	CKT							
1			SPACE	9.83	9.83				SPACE			2							
3	+110/3P	#2s	RTU-1	9.83		9.83			SPACE			4							
5			SPACE	9.83			9.83		SPACE			6							
7			SPACE	9.83	9.83				SPACE			8							
9	+110/3P	#2s	RTU-2	9.83		9.83			SPACE			10							
11			SPACE	9.83			9.83		SPACE			12							
13			SPACE	6.76	6.76				SPACE			14							
15	+70/3P	#4s	RTU-3	6.76		6.76			SPACE			16							
17			SPACE	6.76			6.76		SPACE			18							
19			SPACE	6.76	6.76				SPACE			20							
21	+70/3P	#4s	RTU-4	6.76		6.76			SPACE			22							
23			SPACE	6.76			6.76		SPACE			24							
25			SPACE	0	0.00				SPACE			26							
27			SPACE	0	0.00				SPACE			28							
29			SPACE	0		0.00			SPACE			30							
31			SPACE	0	0.00				SPACE			32							
33			SPACE	0	0.00				SPACE			34							
35			SPACE	0	0.00				SPACE			36							
37			SPACE	13.03	13.03				SPACE			38							
39	225A/3P	SEE RISER	PANELS "MP" AND "PLP"	17.68		17.68			SPACE			40							
41			SPACE	13.27			13.27		SPACE			42							
TOTAL PHASE A (KVA)				TOTAL PHASE B (KVA)				TOTAL PHASE C (KVA)				TOTAL CONNECTED LOAD (KVA)				TOTAL AMPS			
46.21				50.86				46.45				143.52				342.38			
MISCELLANEOUS=14.79																			



E TRANSFER SWITCH SCHEDULE				
POSITION	CIRCUIT BREAKER	LOAD DESCRIPTION	(KVA)	BREAKER
A	20A/1P	OFFICE COMPUTER	0.36	PLP-36
B	20A/1P	COUNTER RECEPTACLES	0.36	PLP-34
C	20A/1P	PRINTER	0.50	PLP-38
D	20A/1P	TELEPHONE EQUIPMENT RECEPTACLE	0.72	PLP-40
E	20A/1P	LIGHTING OFFICE/BATHROOMS (100% ON)	0.81	MP-1
F	20A/1P	LIGHTING SECURITY (100% ON)	0.74	MP-13
G	20A/1P	LIGHTING HARD PARTS (DIMMED TO 40% ON)	0.43	MP-3
H	20A/1P	LIGHTING HARD PARTS (DIMMED TO 40% ON)	0.53	MP-5
I	20A/1P	INSTALLER (ISOLATED GRD RECEPTACLE)	0.36	PLP-17
J	20A/1P	INSTALLER (RECEPTACLE)	0.18	PLP-19
GENERATOR (6,000 WATTS) RATED. MAX KVA=5.0 LOAD			4.69	TOTAL

NOTE: ALL BRANCH CIRCUITS SHALL HAVE AN EQUIPMENT GROUNDING CONDUCTOR ROUTED WITH THE CIRCUIT CONDUCTORS. THIS MEANS ALL CONDUITS MUST HAVE A GREEN WIRE INSTALLED IN THEM AND SIZED IN ACCORDANCE WITH TABLE 250.122 OF THE N.E.C.

DOT-HATCH REPRESENTS CIRCUITS THAT ARE ASSOCIATED WITH OPTIONAL STANDBY GENERATOR CONTROL.

**WIRING & LABELING OF EXIT & EMERGENCY LIGHT CIRCUITS**

1. SEE DETAIL 1/E1 FOR WIRING OF EXIT & EMERGENCY LIGHTS ON THESE CIRCUITS.

2. ALL EXIT & EMERGENCY LIGHTING CIRCUITS SHALL BE LABELED BY THE CONTRACTOR ON THE "PANEL DIRECTORY". (SPEC: NEFA 70.408.4 & 700.12.)

**GENERATOR POWER INLET LABEL**

PERMANENT LABEL SHALL BE 2 x 3 IN SIZE AND SHALL BE BLUE LETTERING ON A CONTRASTING BACKGROUND. LABEL TO BE PLACED 6 INCHES ABOVE GENERATOR RECEPTACLE.

WARNING:  
FOR CONNECTION OF A NONSEPARATELY DERIVED (FLOATING NEUTRAL) SYSTEM ONLY  
(MAX. 6,000 WATT GENERATOR)

**SERVICE DISCONNECT LABEL**

THE SERVICE DISCONNECTING MEANS SHALL BE PROPERLY MARKED "SERVICE DISCONNECT". REFER TO SPEC SECTION 26 00 20 FOR FURTHER IDENTIFICATION PLATE REQUIREMENTS.

ELECTRIC SERVICE RESPONSIBILITIES				
SEE SITE PLAN FOR UTILITY COMPANY CONTACT.				
ITEM NO.	DESCRIPTION (IF APPLICABLE)	FURNISHED BY	INSTALLED BY	
		UTILITY CO.	CONTRACTOR	UTILITY CO.
1	SERVICE LATERAL		X	X
2	SERVICE LATERAL RACEWAY		X	X
3	METER BASE		X	X
4	METER	X		X
5	CT CABINET		X	X
6	OH SERVICE RISER @ BUILDING			
7	TRANSFORMER POLE			
8	SERVICE RISER @ POLE			
9	TRANSFORMER PAD	X		X
10	PAD MOUNT TRANSFORMER	X		X
11	PRIMARY SERVICE LATERAL	X		X
12	PRIMARY SERVICE RACEWAY	X		X

EQUIPMENT LABELS CHART						
SEE ELECTRICAL SERVICE DIAGRAM.						
EQUIPMENT	SERVICE DISCONNECT	OPTIONAL STANDBY SOURCE	RATING	GENERATOR POWER INLET	AVAILABLE FAULT CURRENT	
MDP	X	X				
MP						
PLP						
E						
CT CABINET						

**OPTIONAL STANDBY SOURCE LABEL**

PERMANENT LABEL SHALL BE 2 x 3 IN SIZE AND SHALL BE BLUE LETTERING ON A CONTRASTING BACKGROUND. LABEL TO BE PLACED ON DISCONNECT DOOR.

CAUTION  
TWO SOURCES OF SUPPLY  
STANDBY POWER SOURCE: PORTABLE 6kw GENERATOR LOCATION: OVERHEAD DOOR