

EXTERIOR LIGHT FIXTURE SCHEDULE													
ALL ITEMS LISTED ON THE "LIGHT FIXTURE SCHEDULE" WILL BE SUPPLIED BY THE OWNER (O'REILLY). ITEMS SHALL BE DIRECT ORDERED AND OR RELEASED FROM THE LISTED ELECTRICAL EQUIPMENT DISTRIBUTOR.				GRAYBAR ELECTRIC CO. INC. 11885 LACKLAND ROAD ST. LOUIS, MO 63146				GRAYBAR O'REILLY TEAM EMAIL: oreilly@graybar.com TOLL FREE: (314) 573-2080					
MARK	MFR.	CATALOG NUMBER	SUPPLY VOLTAGE	FINISH	MOUNTING			LAMPS			WATTAGE	NOTES	FIXTURE QUANTITY
					SURFACE WALL	SURF. CEILING	OTHER	FLUORESCENT	LED	OTHER			
LED EXTERIOR LIGHTS													
WS1	LSI	XWM-FT-LED-06L-50-UE-BRZ NO SUBSTITUTIONS	120	DARK BRONZE	X			X			59	FULL CUT-OFF, BUG RATING B1-U0-G1. ARCHITECTURAL ELEVATIONS SHOW DIMENSIONED LOCATIONS.	6
LED POLE LIGHTS													
P2	LSI	MRM-LED-18L-SL-3-LNV-DIM-50-80CRI-BRZ-IL	120	DARK BRONZE		X		X			154	25' POLE LENGTH, ADVANCE BALLASTS, FULL CUT-OFF, NO SUBSTITUTIONS. ANCHOR BOLTS W/HARDWARE & TEMPLATE. WITH INTERNAL LOUVER HOUSE SIDE SHIELD. BUG RATING B1-U0-G3.	3
FIXTURE QUANTITY TO BE VERIFIED WITH SITE PLAN QUANTITY													

**BACKLIGHT-UPLIGHT-GLARE (BUG) RATING / FULL CUTOFF**

SEE CUT-SHEET ON SP SHEETS AND SCHEDULE BELOW FOR EXTERIOR LIGHT FIXTURES. ALL OF THE LSI MRM & XWM LED FIXTURES HAVE ZERO UPLIGHT AND ARE CONSIDERED "FULL CUT OFF" AND DARKSKY COMPLIANT. SP SHEETS AND BELOW DELIVERED LUMENS SCHEDULE HAS "BUG" RATINGS, AS TESTED TO IDENTIFY HOW MUCH OF THE LIGHT GOES BACKWARDS, UPWARDS AND TO THE GROUND. THE CHART SHOWS THAT THESE FIXTURES HAVE BUG RATINGS WITH (UPLIGHT) U = 0.

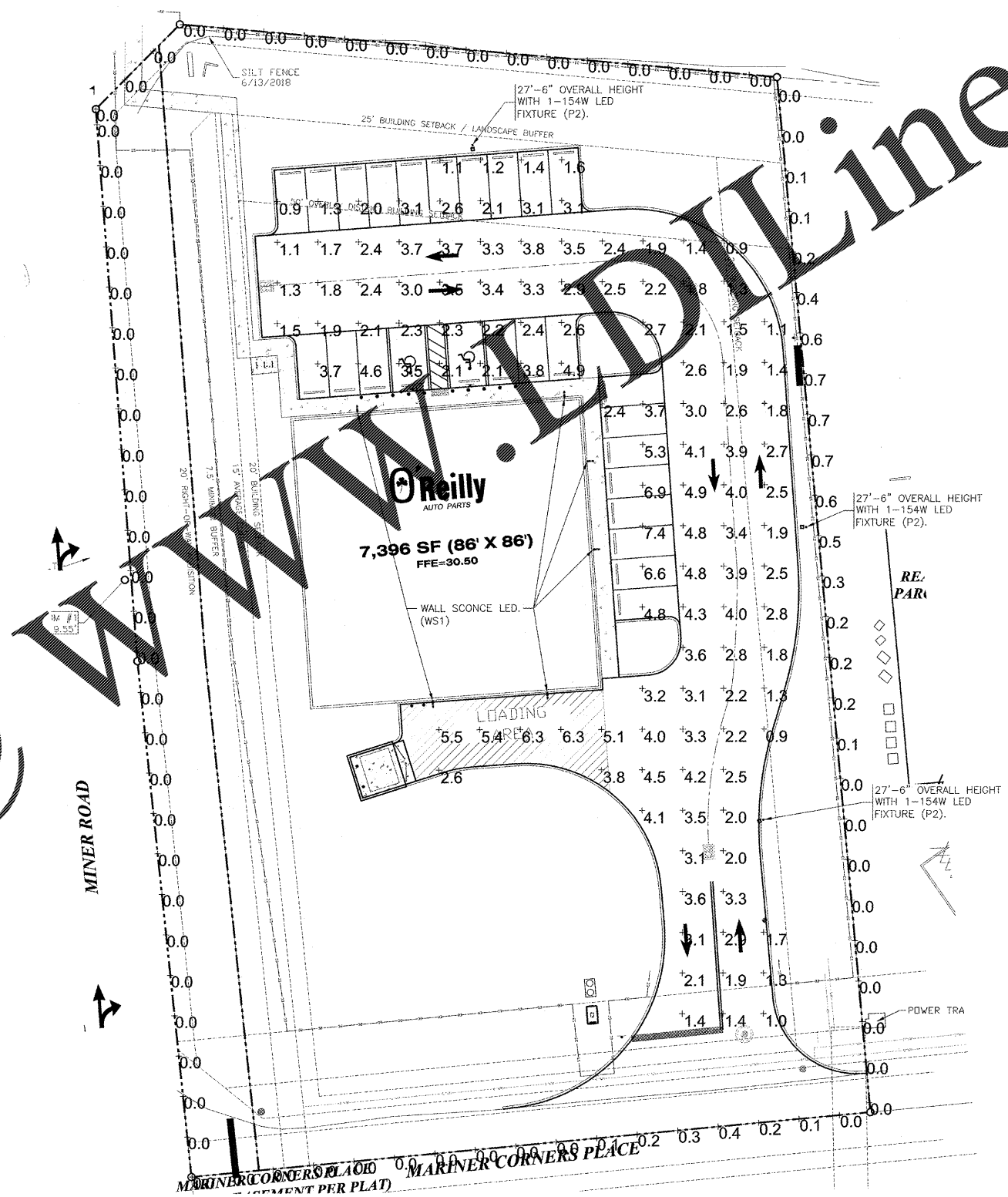
LSI Outdoor LED Fixture BUG Summary						
Catalog Number	Fixture Lumens	Fixture Watts	Lumens/Watt	IES Class	Long. Class	BUG Rating
XWM-3-LED-06-50	6,571	54	122	Type III	Medium	B1-U0-G2
XWM-FT-LED-06-50	6,523	54	121	Type IV	Short	B1-U0-G2

**AUTOMATIC LIGHTING CONTROL**

COMPLIANCE WITH ENERGY CODE IS ACHIEVED BY:

- ONCE THE EMS HAS BEEN PROGRAMMED, THE INTERIOR AND EXTERIOR LIGHTS WILL TURN ON AND OFF USING THE FOLLOWING LOGIC: SEE EM SHEETS.
  - INTERIOR WORK LIGHTS WILL TURN ON WITH FIRST MOTION IN THE STORE AND WILL TURN OFF 15 MINUTES AFTER LAST MOTION ONCE THE STORE IS CLOSED.
  - INTERIOR SALES LIGHTS WILL TURN ON AT STORE OPENING AND TURN OFF 15 MINUTES AFTER STORE CLOSING.
  - EXTERIOR SIGN LIGHTS WILL TURN ON WHEN ITS DARK ENOUGH OUTSIDE ANYTIME DURING STORE HOURS, AND WILL TURN OFF AT STORE CLOSING.
  - EXTERIOR SITE LIGHTS WILL TURN ON WHEN IT IS DARK ENOUGH OUTSIDE AND IT IS WITHIN STORE HOURS OR THERE IS MOTION IN THE STORE. THEY WILL TURN OFF 30 MINUTES AFTER LAST MOTION ONCE THE STORE IS CLOSED.
  - FOR NEW CONSTRUCTION LOCATIONS ONLY, THERE IS A TEMPORARY PROGRAM TO KEEP SIGN AND SITE LIGHTS ON UNTIL MIDNIGHT RATHER THAN THE TIMES INDICATED ABOVE. O'REILLY WILL DISABLE THIS PROGRAM ONE YEAR AFTER STORE OPENING.
- RESTROOMS AND OFFICES: ALL LIGHTING IN THESE AREAS ARE CONTROLLED BY OCCUPANT-SENSING DEVICES.

Statistics							
Description	Symbol	Avg	Max	Min	Max/Min	Avg/Min	Avg/Max
Parking	+	2.90 fc	7.40 fc	0.90 fc	N/A	N/A	N/A

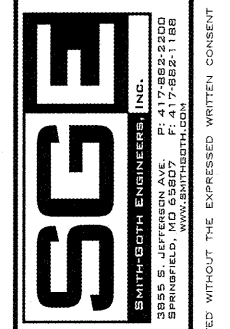
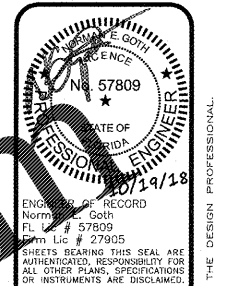


**SITE LIGHTING PHOTOMETRICS**

SCALE: 1"=20'



Order Plans @



**PROJECT:**  
**NEW O'REILLY AUTO PARTS STORE**  
**463352 S.R. 200**  
**YULEE, FL 32097**

**SITE PHOTOMETRICS PLAN**

**O'Reilly AUTO PARTS**

**CORPORATE OFFICES**  
 233 SOUTH PATTERSON  
 SPRINGFIELD, MISSOURI 65802  
 (417) 962-2674 TELEPHONE

DRAWN BY: **LB** CHECKED BY: **NEG**

DATE: **10/19/2018**

REVISION:

PROJECT NUMBER: **YUL**

SHEET NUMBER

**SP1**

REPRODUCTION PROHIBITED WITHOUT THE EXPRESSED WRITTEN CONSENT OF THE DESIGN PROFESSIONAL. © COPYRIGHT 2018-2019. DESIGNS, DRAWINGS AND SPECIFICATIONS ARE INSTRUMENTS OF SERVICE AND ARE THE PROPERTY OF THE DESIGN PROFESSIONAL.