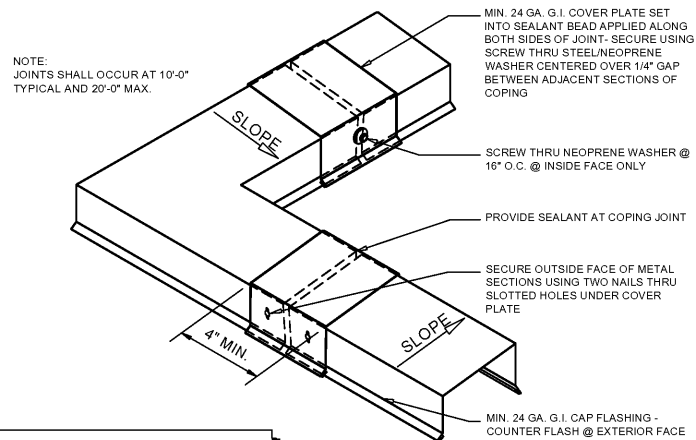
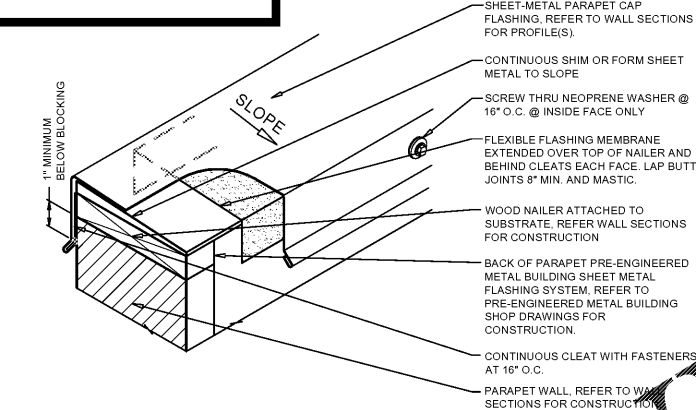


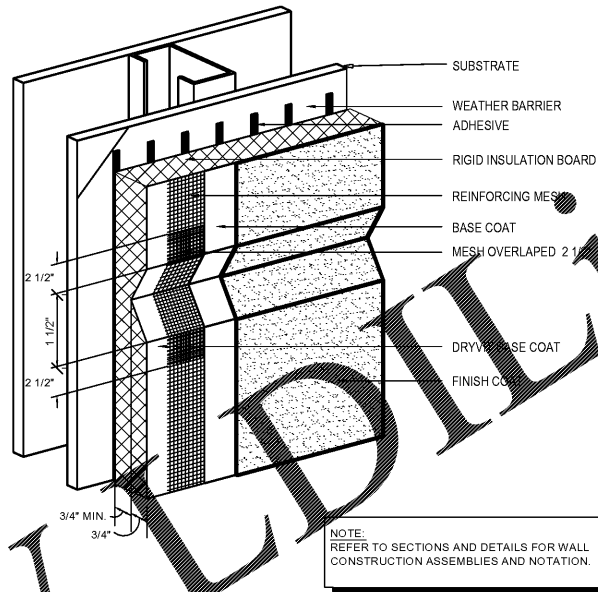
Order Plans @ [www.LDLine.com](http://www.LDLine.com)



NOTE:  
JOINTS SHALL OCCUR AT 10'-0" TYPICAL AND 20'-0" MAX.



**2 TYPICAL COPING FLASHING DETAIL**  
A6.1 SCALE: N.T.S.

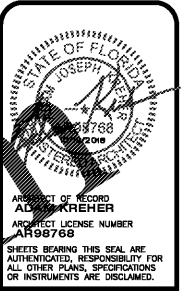


NOTE:  
REFER TO SECTIONS AND DETAILS FOR WALL CONSTRUCTION ASSEMBLIES AND NOTATION.

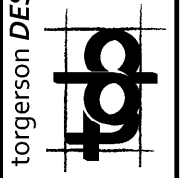
**3 EIFS DECORATIVE JOINT DETAIL**  
A6.1 SCALE: N.T.S.

**GENERAL NOTES**

- (A) REFER TO PROJECT MANUAL AND SCOPE OF WORK SCHEDULE FOR ADDITIONAL REQUIREMENTS.
- (B) SHEET METAL AND ROOFING CONSTRUCTION SHALL COMPLY WITH NATIONAL ROOFING CONTRACTORS ASSOCIATION (NRCA) AND SHEET METAL AND AIR CONDITIONING CONTRACTORS NATIONAL ASSOCIATION (SMACNA) DESIGN STANDARDS AND RECOMMENDATIONS.



PROJECT OF RECORD  
ADAM KREHER  
PROJECT LICENSE NUMBER  
18768



torgerson DESIGN partners  
116 N. 2ND AVENUE  
OZARK, MO 65721  
P (417) 581-8889  
F (417) 581-9002

**O'Reilly AUTO PARTS**  
CORPORATE OFFICES  
233 SOUTH PATTERSON  
SPRINGFIELD, MISSOURI 65802  
(417) 882-2674 TELEPHONE

PROJECT:  
NEW O'REILLY AUTO PARTS STORE  
463352 SR 200  
YULEE, FL 32097

EXTERIOR DETAILS

DRAWN BY: NO  
CHECKED BY: KR  
DATE: 10/19/2018  
REVISION:  
PROJECT NUMBER: 18155-YUL  
SHEET NUMBER: A6.1

**1 NOT USED**  
A6.1 SCALE: N.T.S.

**4 NOT USED**  
A6.1 SCALE: N.T.S.

**5 NOT USED**  
A6.1 SCALE: N.T.S.

© COPYRIGHT 2016 - DESIGNS, DRAWINGS AND SPECIFICATIONS ARE INSTRUMENTS OF SERVICE AND ARE THE PROPERTY OF THE DESIGN PROFESSIONAL. REPRODUCTION PROHIBITED WITHOUT THE EXPRESSED WRITTEN CONSENT OF THE DESIGN PROFESSIONAL.