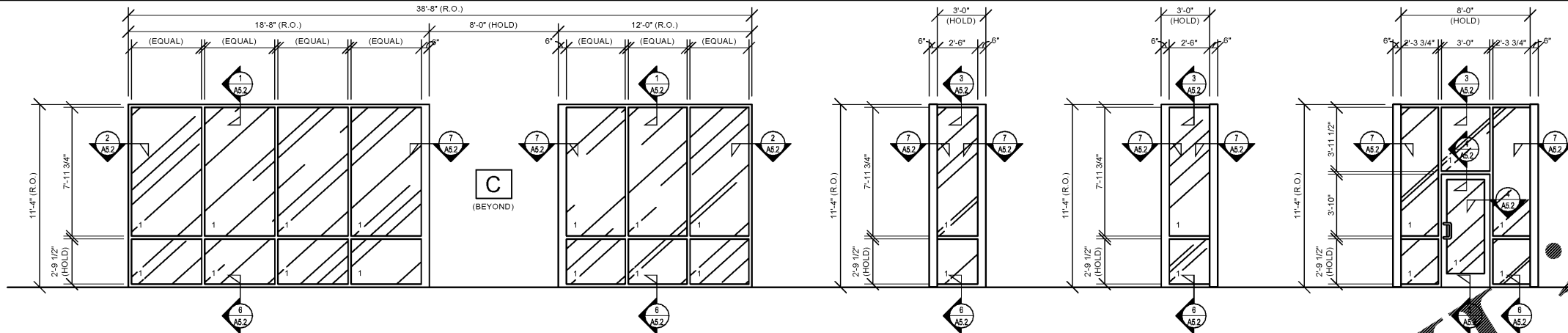
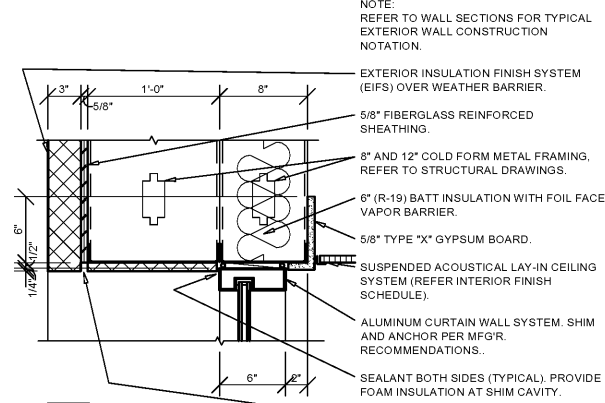


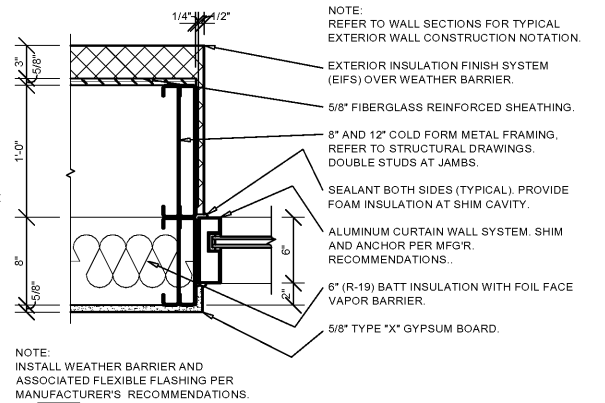
WINDOW TYPES



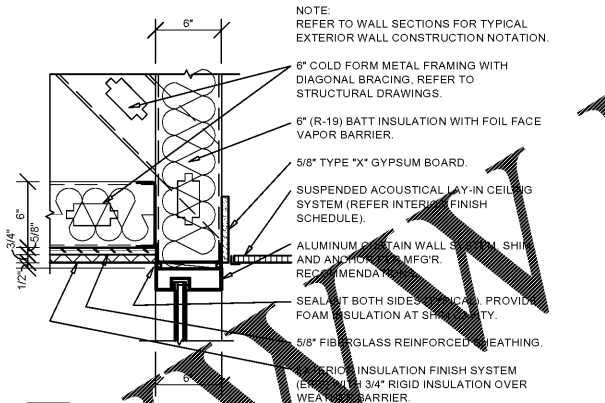
A ALUMINUM CURTAIN WALL FRAMING (2 1/4" X 6") SYSTEM, THERMALLY BROKEN, FIXED UNIT.
B1 ALUMINUM CURTAIN WALL FRAMING (2 1/4" X 6") SYSTEM, THERMALLY BROKEN, FIXED UNIT.
B2 ALUMINUM CURTAIN WALL FRAMING (2 1/4" X 6") SYSTEM, THERMALLY BROKEN, FIXED UNIT.
C ALUMINUM CURTAIN WALL FRAMING (2 1/4" X 6") SYSTEM, THERMALLY BROKEN, FIXED UNIT.



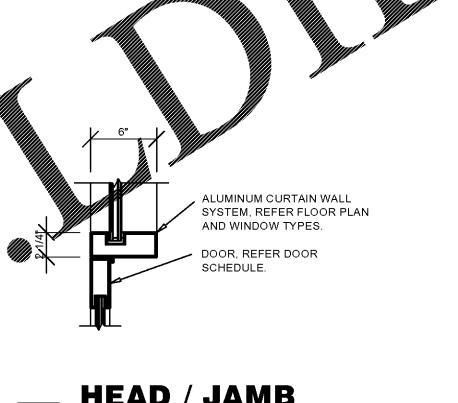
1 HEAD DETAIL
A5.2 SCALE: 1 1/2" = 1'-0"



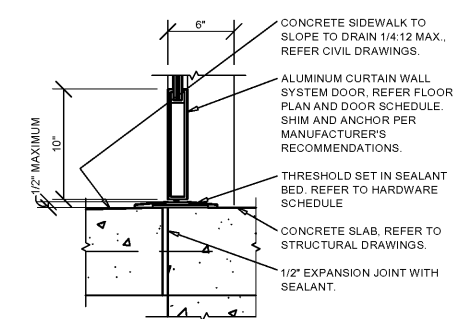
2 JAMB DETAIL
A5.2 SCALE: 1 1/2" = 1'-0"



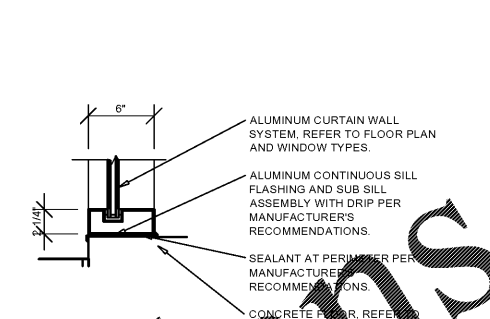
3 HEAD DETAIL
A5.2 SCALE: 1 1/2" = 1'-0"



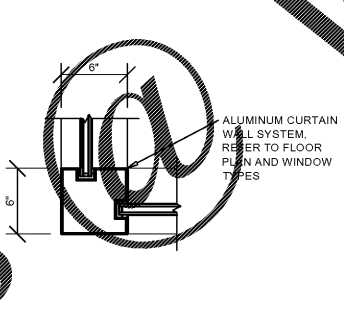
4 HEAD / JAMB DETAIL
A5.2 SCALE: 1 1/2" = 1'-0"



5 SILL DETAIL
A5.2 SCALE: 1 1/2" = 1'-0"



6 SILL DETAIL
A5.2 SCALE: 1 1/2" = 1'-0"



7 JAMB DETAIL
A5.2 SCALE: 1 1/2" = 1'-0"

GENERAL NOTES

- A REFER TO PROJECT MANUAL FOR ADDITIONAL REQUIREMENTS.
- B REFER TO BUILDING CODE SUMMARY FOR PROJECT STRUCTURAL DESIGN CRITERIA. WINDOW FRAMING AND ANCHORING SYSTEMS SHALL BE DESIGNED BY MANUFACTURER TO CONFORM TO PERFORMANCE AND TESTING REQUIREMENTS SPECIFIED.
- C REFER TO FLOOR PLAN, ELEVATIONS, AND SECTIONS FOR ADDITIONAL REQUIREMENTS.
- D WINDOW TYPE ELEVATIONS SHOWN VIEWED FROM EXTERIOR INSIDE.
- E REFER TO EXTERIOR FINISH SCHEDULE FOR ALUMINUM WINDOW FRAMING COLORS. PERIMETER SEALANT COLOR TO MATCH WINDOW FRAMING COLOR UNLESS OTHERWISE NOTED.
- F ALL DIMENSIONS TO ROUGH FACE OF FRAMING UNLESS OTHERWISE INDICATED. FIELD VERIFY FINAL ROUGH OPENINGS PRIOR TO INSTALLATION.
- G REFER TO DOOR AND HARDWARE SCHEDULES FOR ADDITIONAL REQUIREMENTS.
- H SECURITY GLASS MAY BE REQUIRED. CONTACT PROJECT ADMINISTRATOR FOR VERIFICATION. (REFER TO SCOPE OF WORK SCHEDULE). PROVIDE ADDITIONAL SUPPORT FRAMING SYSTEM AS REQUIRED.
- I WHEN WIND SPEED IS EQUAL TO OR GREATER THAN 120 MPH, A STORM PANEL SYSTEM SHALL BE OWNER FURNISHED AND INSTALLED. CONTACT PROJECT ADMINISTRATOR TO VERIFY AND COORDINATE WITH SYSTEM PROVIDED BY OTHERS. (REFER TO SCOPE OF WORK SCHEDULE). PROVIDE ADDITIONAL SUPPORT FRAMING SYSTEM AS REQUIRED.
- J CONTRACTOR'S OPTION TO DIRECT ORDER AND PURCHASE WINDOW FRAMING SYSTEM AND GLAZING FROM THE FOLLOWING SUPPLIER (REFER TO SCOPE OF WORK SCHEDULE):

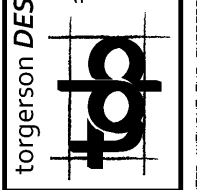
COULTER & COMPANY
 13711 E. 66TH ST. N.
 OWASSO, OK 74055
 PHONE: (918) 272-4494
 FAX: (918) 272-7908
 EMAIL: carl@coulterglass.com
 CONTACT: Carl Yorman

GLAZING SCHEDULE

- 1 1/2" INSULATED IMPACT RESISTANT SAFETY GLAZING (7/16" CLEAR TEMPERED EXTERIOR PANE WITH REINFORCING INNER LAYER / 7/16" CLEAR TEMPERED INTERIOR PANE) SHADING COEFFICIENT 0.81 SHGC TO EQUAL 0.25 OR GREATER U-FACTOR TO EQUAL 0.50 OR GREATER



PROJECT OF RECORD
JOSEPH A. KREHER
 ARCHITECT LICENSE NUMBER
 AR09766
 SHEETS BEARING THIS SEAL ARE AUTHENTICATED. RESPONSIBILITY FOR ALL OTHER PLANS, SPECIFICATIONS OR INSTRUMENTS ARE DISCLAIMED.
 116 N. 2ND AVENUE
 OZARK, MO 65721
 P (417) 581-8889
 F (417) 581-9002



PROJECT:
 NEW O'REILLY AUTO PARTS STORE
 463352 SR 200
 YULEE, FL 32097

WINDOW SCHEDULE

O'Reilly AUTO PARTS
 CORPORATE OFFICES
 233 SOUTH PATTERSON
 SPRINGFIELD, MISSOURI 65802
 (417) 882-2724 TELEPHONE

DRAWN BY: NO
 CHECKED BY: KR
 DATE: 10/19/2018
 REVISION:
 PROJECT NUMBER: 18155-YUL
 SHEET NUMBER: A5.2

A5.2

Order Plans

WINDOW

WLDLINE.COM