

FOUNDATION PLAN
SCALE: 1/8" = 1'-0"



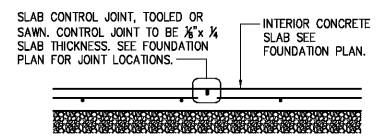
KEYNOTES

- 1 SLAB HAIRPIN. SEE DETAIL 8/S3.1
- 2 PROVIDE #4x4'-0" ANGLED DOWEL AT SLAB INSIDE CORNERS
- 3 CONTROL OR CONSTRUCTION JOINT SEE DETAILS 1 & 2/S2
- 4 SIDEWALK: PROVIDE 4" THICK CONCRETE REINFORCED W/ #3'S @ 18" O.C. EACH WAY (PLACED AT MID-HEIGHT OF SLAB) OVER COMPACTED SUB-BASE MATERIAL (AS DIRECTED BY THE GEOTECHNICAL REPORT OR ONSITE GEOTECHNICAL ENGINEER) PROPERLY PREPARED SUBGRADE. SEE CIVIL DRAWINGS FOR JOINT REQUIREMENTS, EXTENTS OF FLATWORK, AND TOP OF CONCRETE SPOT ELEVATIONS.
- 5 STEEL BOLLARD: SEE SITE DEVELOPMENT PLANS AND DETAILS. ALIGN WITH CENTERLINE OF STOREFRONT MULLIONS
- 6 4"x4" (MIN.) DOORPAD: PROVIDE 4" THICK CONCRETE REINFORCED W/ #3'S @ 18" O.C. EACH WAY (PLACED AT MID-HEIGHT OF SLAB) OVER COMPACTED SUB-BASE MATERIAL (AS DIRECTED BY THE GEOTECHNICAL REPORT OR ONSITE GEOTECHNICAL ENGINEER) PROPERLY PREPARED SUBGRADE. CENTER PAD ON DOOR. CONTRACTOR MAY ELECT TO CONSTRUCT DOORPAD INTEGRAL WITH ADJOINING SIDEWALK WHERE APPLICABLE. SEE CIVIL DRAWINGS FOR TOP OF CONCRETE SPOT ELEVATIONS AND ADDITIONAL REQUIREMENTS.
- 7 STEEL BOLLARD AT DEALER DOOR: SEE SITE DEVELOPMENT PLANS AND DETAILS. ALIGN WITH EACH FLOOR JAMB.
- 8 ISOLATION JOINT. SEE DETAIL 3/S2 (SPACING NOT TO EXCEED 30'-0")
- 9 DETECTABLE WARNING SURFACE (IF REQUIRED), REFER TO CIVIL DRAWINGS FOR ADDITIONAL INFORMATION.

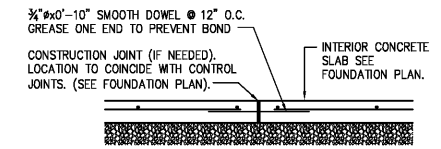
FOUNDATION SCHEDULE

MARK	FOOTING SIZE (W x L x T)	FOOTING REINFORCEMENT		BOTTOM OF FOOTING ELEVATION	PILASTER SIZE	PILASTER REINFORCEMENT		TOP OF PILASTER ELEVATION	MARK
		LONG.	TRANS.			VERT.	TIES		
F1	3'-6" x 3'-6" x 1'-6"	(5) #5's	(5) #5's	97'-6"					F1
F2	4'-0" x 3'-6" x 1'-6"	(6) #5's	(6) #5's	97'-6"					F2
F3	5'-6" x 3'-6" x 1'-6"	(6) #4 EACH WAY TOP & BOTTL.		96'-0"	2'-6" x 2'-6"	(12) #6	SEE 9/S3.2	99'-4"	F3
F4	3'-6" x 3'-6" x 1'-6"	(5) #5's	(5) #5's	97'-6"					F4
F5	3'-6" x 3'-6" x 1'-6"	(5) #5's	(5) #5's	97'-6"					F5
F6	3'-6" x 3'-6" x 1'-6"	(5) #5's	(5) #5's	97'-6"					F6
F7	4'-0" x 4'-0" x 1'-6"	(6) #5's	(6) #5's	97'-6"					F7

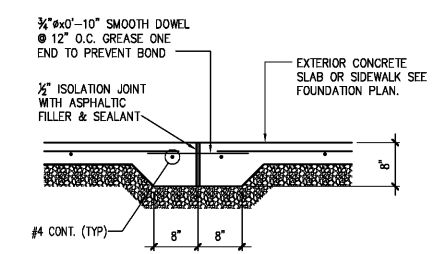
- NOTES:
1. ALL ANCHOR BOLTS SHALL BE SIZE, QUANTITY AND SPACING AS SPECIFIED BY THE PEMB MANUFACTURER. MAINTAIN 3" MINIMUM CONCRETE COVER AROUND BOLTS. TIES SHALL WRAP AROUND ANCHOR BOLTS.
 2. COLUMN BASE PLATES ARE TO REST ON TOP OF SLAB. PROVIDE LEVEL BEARING SURFACE FOR EVEN CONTACT.
 3. COLUMN FOOTING REINFORCEMENT TO BE INTEGRAL WITH CONTINUOUS FOUNDATION REINFORCEMENT (WHERE APPLICABLE)
 4. PROVIDE ANCHOR BOLT TEMPLATES AT COLUMN.
 5. ALL SPREAD FOOTINGS ARE TO BE CENTERED BENEATH COLUMNS UNLESS NOTED OTHERWISE.



1 TYP. CONTROL JOINT DETAIL
SCALE: 3/4" = 1'-0"



2 TYP. CONSTR. JOINT DETAIL
SCALE: 3/4" = 1'-0"



3 SIDEWALK ISOLATION JOINT
SCALE: 3/4" = 1'-0"

JS Smith Consulting Engineers, P.C.
Professional Engineer, State of Missouri, No. 72886
1807 W. 34th St., Suite 104, Joplin, Missouri 64501
PHONE: 417-624-7444 FAX: 417-624-7445

PROJECT:
NEW O'REILLY AUTO PARTS STORE
463352 SR 200
YULEE, FL 32097

FOUNDATION PLAN

O'Reilly AUTO PARTS
CORPORATE OFFICES
233 SOUTH PATTERSON
SPRINGFIELD, MISSOURI 65802
(417) 862-2674 TELEPHONE

DRAWN BY: BTJ CHECKED BY: AS
DATE: 10/19/18
REVISION:
PROJECT NUMBER: YUL
SHEET NUMBER: **S2**

Order Plans

WWW.DLINE.COM