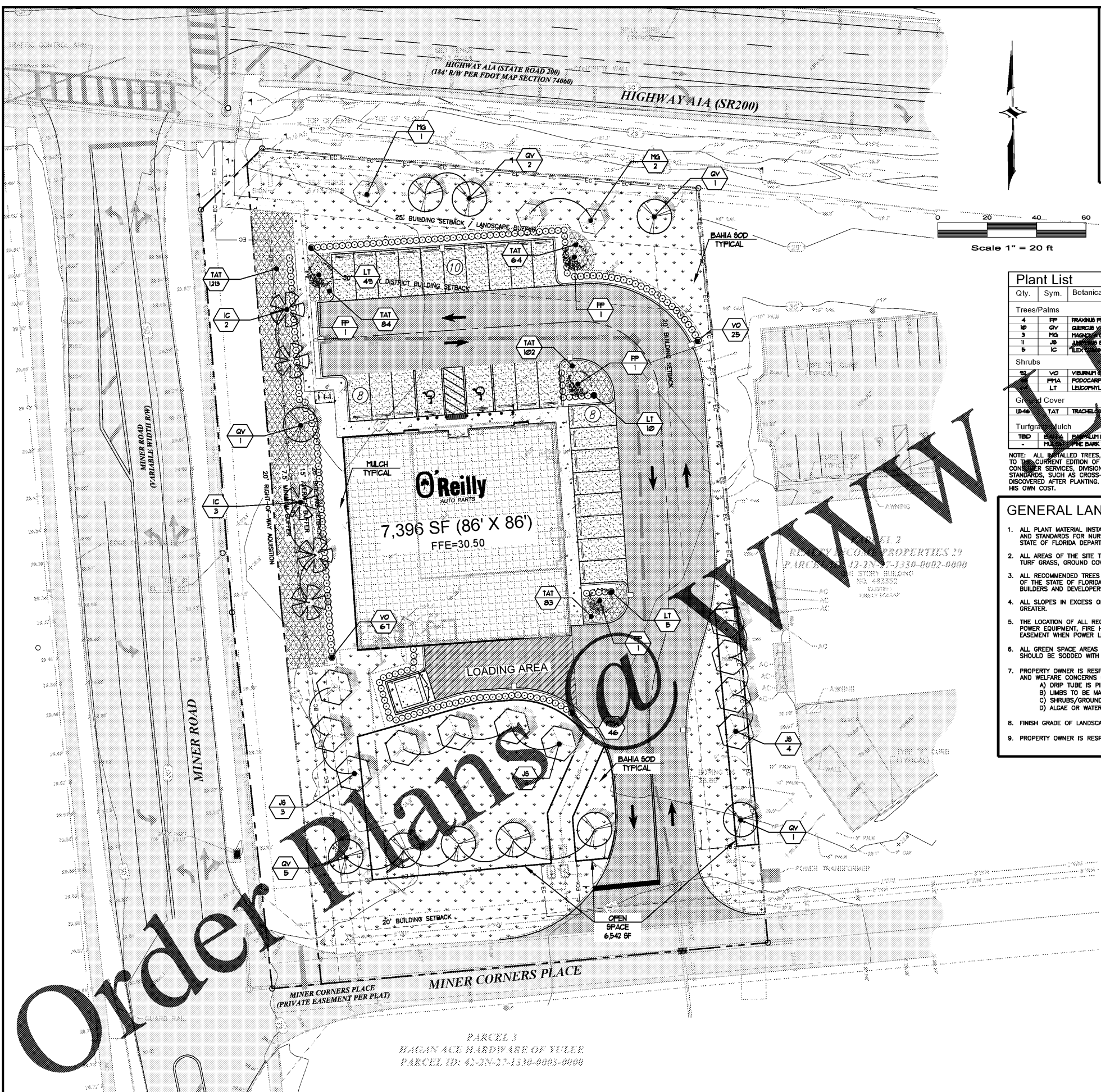


C:\Projects\18-035 - O'Reilly's - Nassau\Drawings\Site\Construction\18-035 - Planting Plan.dwg - Printed: Nov 26, 2018 - 3:58pm - by: Lukab



**LEGEND**

---	PROPERTY LINE	[Pattern]	PROP BUILDING
---	BUILDING SETBACK LINE	[Pattern]	PROP 4" THICK CONC PAVEMENT
---	REQUIRED LANDSCAPE BUFFER	[Pattern]	PROP 6" THICK CONC PAVEMENT
---	PROPOSED SILT FENCE	[Pattern]	PROP 8" THICK CONC PAVEMENT
---	PROPOSED TREE BARRICADE	[Pattern]	PROP LANDSCAPED AREAS
[Pattern]	EX. CONCRETE SIDEWALK TO REMAIN	[Symbol]	PARKING SPACE COUNT
[Pattern]	EXISTING ASPHALT PAVEMENT	[Symbol]	PROPOSED LIGHT POLE

**TREE REQUIREMENTS:**

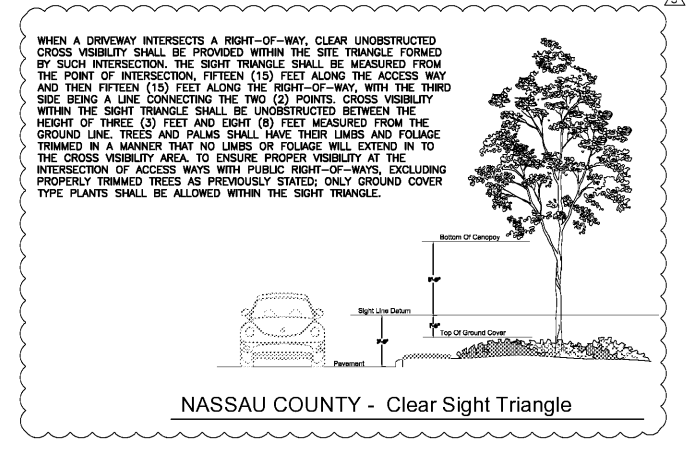
OPEN SPACE TREE REQUIREMENT (10% OF SITE): 6,542 SF / 500 SF TREE = 13  
 VIA STREET FRONTAGE REQUIREMENT (A1A/SR 200): 177 LF / 100 LF \* 3 CANOPY TREES = 6  
 VIA STREET FRONTAGE REQUIREMENT (MINER ROAD): 325 LF / 100 LF \* 3 CANOPY TREES = 10  
 VIA REQUIREMENT: 19,441 SF / 500 SF TREE = 39  
**TOTAL TREE REQUIREMENTS: = 33**

**Plant List**

Qty.	Sym.	Botanical Name	Common Name	Specifications	Space	Native	Drought Tolerant
<b>Trees/Palms</b>							
4	FP	FRAXINUS PENNYC	GREEN ASH	CONT. GROWN 12" H. x 1 1/2" DBH, 3" CALIPER, 1/2" CLEAR TRUNK	AA	YES	YES
10	QV	QUERCUS VITIFOLIA	LIVE OAK	CONT. GROWN 12" H. x 1 1/2" DBH, 3" CALIPER, 1/2" CLEAR TRUNK	AA	YES	YES
3	MS	MANGROVIA FLORIDA	SOFT LEAF MANGROVE	CONT. GROWN 12" H. x 1 1/2" DBH, 3" CALIPER, 1/2" CLEAR TRUNK	AA	YES	YES
11	JB	JUNIPERO SPICATA	SOUTHERN CEDAR	CONT. GROWN 12" H. x 1 1/2" DBH, 3" CALIPER, 1/2" CLEAR TRUNK	AA	YES	YES
5	IC	ILEX CORNUTI	DAKOTA REDWOOD	CONT. GROWN 12" H. x 1 1/2" DBH, 3" CALIPER, 1/2" CLEAR TRUNK	AA	YES	YES
<b>Shrubs</b>							
10	VO	VIBURNUM SPICATUM	WALTERS VIBURNUM	3 GAL, 18" HEIGHT, 18" SPREAD	30" OC.	YES	YES
10	PM	PODOCARPUS NODOSUS	PODOCARPUS	3 GAL, 18" HEIGHT, 18" SPREAD	30" OC.	NO	YES
10	LT	LEUCOPHYLLUM SCABRUM	TEXAS SAGE	3 GAL, 18" HEIGHT, 18" SPREAD	30" OC.	YES	YES
<b>Ground Cover</b>							
10-40	TAT	TRACHELAPETALUM SPICATUM	TRICOLOR MINNA JASMINE	1 GAL, 18" VINES, FILL IN POT	12" SQ.	NO	YES
<b>Turfgrass/Mulch</b>							
100	BAH	BAHIA NODOSA	BAHIA SOD	SOLID ARGENTINE BAHIA SOD			
100	MUL	MULCH	MULCH	3" DEPTH			

**NOTE:** ALL INSTALLED TREES, SHRUBS AND GROUNDCOVERS SHALL CONFORM TO THE STANDARDS FOR FLORIDA GRADE NO. 1 OR BETTER ACCORDING TO THE CURRENT EDITION OF "GRADES AND STANDARDS FOR NURSERY PLANTS" PUBLISHED BY THE FLORIDA DEPARTMENT OF AGRICULTURE AND CONSUMER SERVICES, DIVISION OF PLANT INDUSTRY. ANY TREES THAT EXHIBIT CHARACTERISTICS INCOMMENSURATE WITH FLORIDA NO. 1 GRADE STANDARDS, SUCH AS CROSS-BRANCHING, MULTIPLE LEADERS OR TRUNNING OR TOPPING OF THE TREE WILL BE REJECTED, EVEN IF SUCH TREE IS DISCOVERED AFTER PLANTING. THE CONTRACTOR WILL BE RESPONSIBLE FOR REMOVING THE TREE AND REPLACING IT WITH AN ACCEPTABLE SPECIMEN AT HIS OWN COST.

- GENERAL LANDSCAPE NOTES**
- ALL PLANT MATERIAL INSTALLED ON THIS PROJECT SHALL BE CLASSIFIED "FLORIDA #1" OR BETTER AS DEFINED BY THE LATEST EDITION OF "GRADES AND STANDARDS FOR NURSERY PLANTS" AND "GRADES AND STANDARDS FOR NURSERY PLANTS, PART II, PALMS AND TREES" PUBLISHED BY THE STATE OF FLORIDA DEPARTMENT OF AGRICULTURE AND CONSUMER SERVICES.
  - ALL AREAS OF THE SITE THAT ARE NOT COVERED BY BUILDINGS, PAVEMENTS, PONDS OR EXISTING VEGETATION SHALL BE COVERED WITH MULCH, TURF GRASS, GROUND COVERS, OR SHRUBS AND IRRIGATED WITH A LOW-VOLUME AUTOMATIC IRRIGATION SYSTEM.
  - ALL RECOMMENDED TREES AND PLANT MATERIAL SHALL BE PLANTED IN ACCORDANCE WITH THE SPECIFICATIONS DESCRIBED IN THE LATEST EDITION OF THE STATE OF FLORIDA DEPARTMENT OF AGRICULTURE AND CONSUMER SERVICE, DIVISION OF FORESTRY, "TREE PROTECTION MANUAL FOR BUILDERS AND DEVELOPERS".
  - ALL SLOPES IN EXCESS OF 1:5 SHALL BE SODDED WITH A SUITABLE PERMANENT TURFGRASS. NO TREES SHALL BE PLANTED ON SLOPES 2:1 OR GREATER.
  - THE LOCATION OF ALL REQUIRED TREES MUST NOT CONFLICT WITH LIGHTING FIXTURES, SIGNS, UNDERGROUND AND OVERHEAD UTILITIES, FLORIDA POWER EQUIPMENT, FIRE HYDRANTS, ETC.. TREE SPECIES WITH A HEIGHT GREATER THAN 20 FEET SHALL NOT BE PLANTED WITHIN A UTILITY EASEMENT WHEN POWER LINES LIE DIRECTLY OVERHEAD.
  - ALL GREEN SPACE AREAS NOT SPECIFIED OTHERWISE WILL BE SODDED WITH BAHIA SOD. ANY AREAS DISTURBED OUTSIDE OF PROJECT LIMITS SHOULD BE SODDED WITH BAHIA SOD.
  - PROPERTY OWNER IS RESPONSIBLE FOR MAINTAINING THE IRRIGATION AND PLANT MATERIAL IN A FASHION THAT IS SENSITIVE TO THE HEALTH, SAFETY AND WELFARE CONCERNS OF PEDESTRIANS ON THE PUBLIC WALKWAYS SUCH THAT:
    - DRIP TUBE IS PINNED AND COVERED AS SPECIFIED.
    - LIMBS TO BE MAINTAINED CLEAR OF PEDESTRIAN WAYS.
    - SHRUBS/GROUNDCOVERS DO NOT ENCRoACH INTO THE WALKING SURFACE.
    - ALGAE OR WATER DO NOT CAUSE THE WALK SURFACE TO BECOME SLICK.
  - FINISH GRADE OF LANDSCAPE AREAS SHALL BE 2" BELOW THE FINISH GRADE OF SIDEWALKS AND CURBS.
  - PROPERTY OWNER IS RESPONSIBLE FOR MAINTENANCE OF LANDSCAPING.



**CAMPO ENGINEERING, INC.**

FBPR CERTIFICATE OF AUTHORIZATION NO. 26726

1725 EAST 5TH AVENUE  
 TAMPA, FL. 33605  
 PHONE: (813) 215-7372  
 FAX: (813) 902-8782

**PROJECT TITLE**

**YULEE O'REILLYS AUTO PARTS**

**NASSAU COUNTY, FLORIDA**

**CLIENT**

GRYBOSKI, HOWE & GRAVELY  
 101 S. BAY BLVD., SUITE B-3  
 P.O. BOX 732  
 ANNA MARIA, FLORIDA 34216

**REVISIONS**

NO.	DESCRIPTION	DATE
1	NASSAU COUNTY COMMENTS	8/21/2018
2	NASSAU COUNTY COMMENTS	10/03/2018
3	NASSAU COUNTY COMMENTS	11/15/2018

ISSUE DATE: 08/2017  
 REVIEWED BY: ALC  
 DRAWN BY: LAB  
 DESIGNED BY: ALC

PROJECT NUMBER  
 CEI 18-035

**ANTHONY LEO CELANI**  
 LICENSE  
 No. 76056  
 STATE OF FLORIDA  
 PROFESSIONAL ENGINEER

Anthony L. Celani 76056 11/26/2018  
 NAME SEAL NO. DATE

**SHEET TITLE**

**PLANTING PLAN**

**SHEET NUMBER**

**C-10**

NASSAU COUNTY PERMIT NO. SPT18-022