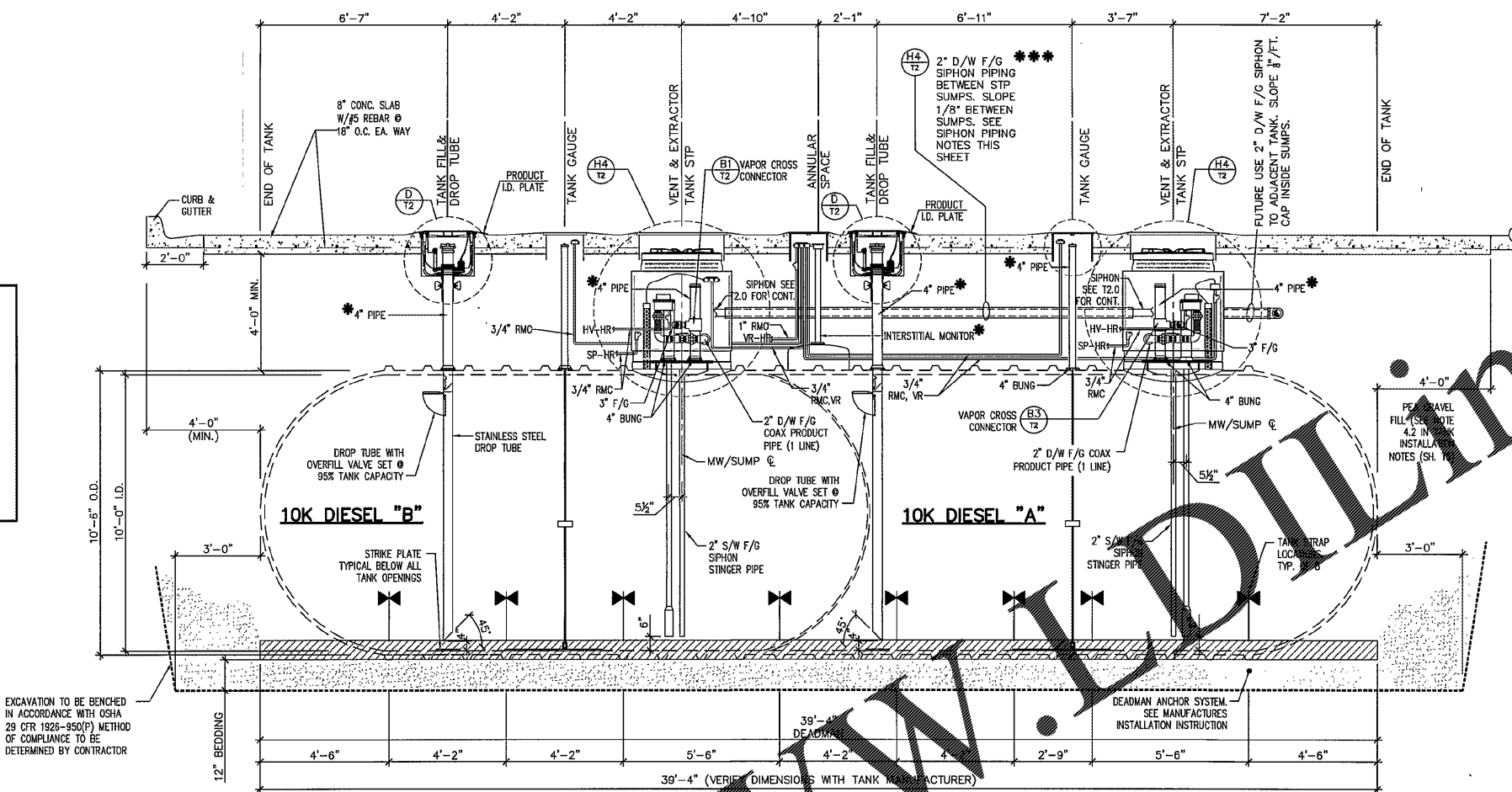
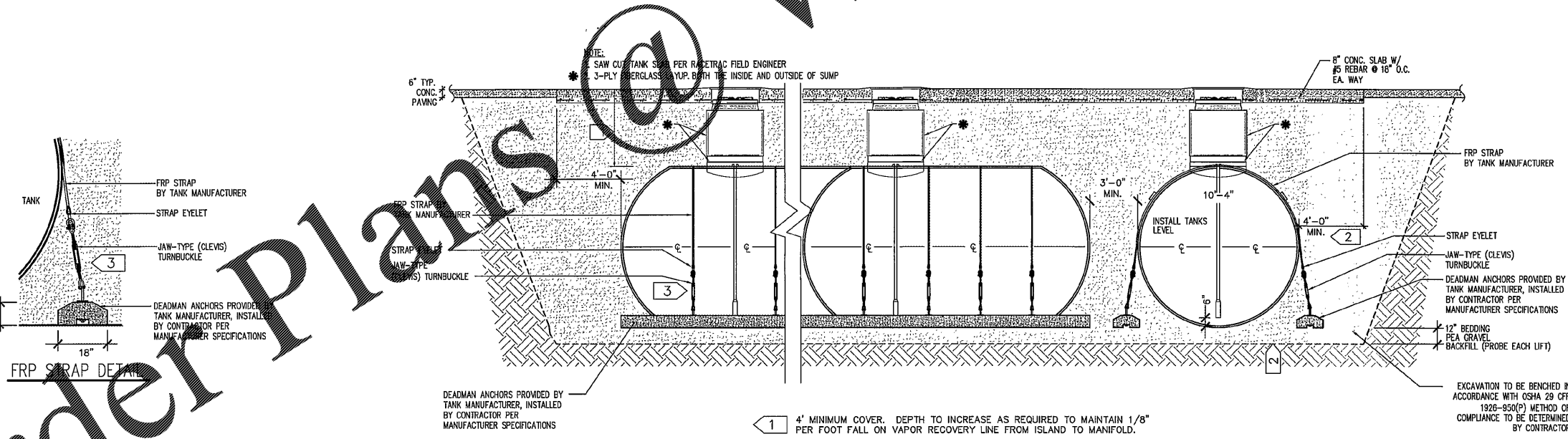


- * ALL RISER PIPES & FITTINGS ARE TO BE COATED WITH A BITUMINOUS COATING AND WRAPPED W/3M TAPE FOR CORROSION PROTECTION---SEE NOTES SHEET RT-T4.0
- ** CONFIRM BURIAL DEPTH WITH RACETRAC PROJECT MANAGER
- *** SIPHON PIPING NOTES:
 1. 2" D/W F/G SIPHON PIPING SLOPED 1/8" PER FT. BETWEEN SUMPS.
 2. SIPHON PIPING INSTALLATION TO BE IN ACCORDANCE WITH API 1615, SECTION 9.2.4 DETAIL SHEET T2.0



C LONGITUDINAL TANK SECTION
 T1.3 20,000 GALLON TANK 3/8"=1'-0"



- 1 4" MINIMUM COVER. DEPTH TO INCREASE AS REQUIRED TO MAINTAIN 1/8" PER FOOT FALL ON VAPOR RECOVERY LINE FROM ISLAND TO MANIFOLD.
- 2 ALL TANK PITS AND PIPE TRENCHES TO BE LINED WITH FILTER FABRIC CLOTHS AND LAPPED OVER THE TOP OF BURIED TANKS AND PIPES PRIOR TO BACKFILLING.
- 3 UNIFORMLY TIGHTEN EACH ANCHOR STRAP WITH TURNBUCKLES STRAP MUST BE SNUG WITHOUT CAUSING TANK DEFLECTION. CHECK DEFLECTION BEFORE AND AFTER SECURING STRAPS. APPLY HEAVY BITUMINOUS COATING TO TURNBUCKLES AND ATTACHMENTS TO PREVENT CORROSION.

D TYPICAL TANKFIELD SECTION AND ANCHORING DETAILS
 T1.3 1/4"=1'-0"

ISSUE/REVISION RECORD	DATE	DESCRIPTION

Racetrac
 RACETRAC PETROLEUM, INC.
 3225 CUMBERLAND BOULEVARD
 SUITE 100
 ATLANTA, GEORGIA 30339
 (770) 431-7600

PROJECT NAME
 PEACHTREE PKWY & ENGINEERING DRIVE

PEACHTREE CORNERS GEORGIA
 SWC OF PEACHTREE PKWY and ENGINEERING DRIVE

RACETRAC PROJECT NUMBER
 1201

PLAN SERIES
 2011 BR-RH-M90 0801

PLAN MODIFICATION NOTICE
 NO MODIFICATIONS APPLIED
 MODIFICATIONS APPLY

STANDARD PLAN BULLETINS (SPB) MODIFY THE PLAN SERIES SET NOTED ABOVE. THE SPB GIVEN ABOVE REPRESENTS THE LATEST MODIFICATION INCORPORATED TO THIS PLAN SERIES SET. CONTACT RACETRAC ENGINEERING AND CONSTRUCTION FOR ALL BULLETINS.

PROFESSIONAL SEAL



PROJECT NUMBER
 18011

SHEET TITLE
 TANK DETAILS

SHEET NUMBER
 RT-T1.3

ISSUED FOR CONSTRUCTION

Order Plans @ WWW.ArchLine.com