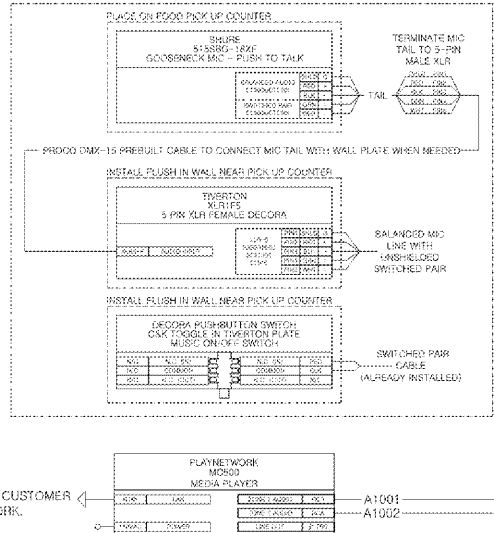


GENERAL NOTES FOR LIGHT SENSOR INSTALLATION

1. WIRING FOR THE LIGHT SENSOR MUST BE #18/3 SHIELDED CABLE AND SHALL BE RUN IN A SEPARATE (ELECTRICAL CONTRACTOR SUPPLIED) CONDUIT TO THE ROOF.
2. THE "SHIELD CONDUCTOR" AT THE LIGHT SENSOR JUNCTION BOX MUST BE CUT OFF AT THE INSULATION AND TAPED TO PREVENT GROUNDING. THE "SHIELD CONDUCTOR" AT THE LIGHTING MANAGER MUST BE GROUNDED TO THE MOUNTING SCREEN.
3. THE LIGHT SENSOR "EYE" MUST BE INSTALLED TO FACE THE NORTHERN SKY AWAY FROM ANY OTHER OUTSIDE LIGHTING SOURCES SUCH AS CANOPY LIGHTS, POLE LIGHTS, OR SECURITY LIGHTS. THE LIGHT SENSOR MUST BE MOUNTED AT LEAST 18" ABOVE ROOF LINE.
4. ** SPECIAL NOTE - TEST AND INSPECT / ELECTRICAL CONTRACTOR *** THE LMZ10SEN1 INCLUDES THE LIGHT SENSOR INSTALLED IN AN ALB1 CONDUIT HOUSING WITH 50 FT. OF #18/3 SHIELDED CABLE. THE LMZ10SEN1 ASSEMBLY IS TO BE PRE-WIRED TO THE "FIELD WIRING" SIDE OF TERMINAL STRIP BY TEST & INSPECT AT SQUARE D TO CHECK OPERATION. AFTER CHECKOUT IS COMPLETE - TEST & INSPECT TO SECURE LMZ10SEN1 ASSEMBLY IN CABINET FOR SHIPMENT, WITH WIRES LEFT CONNECTED. THE ELECTRICAL CONTRACTOR SHALL COMPLETE INSTALLATION OF LIGHT SENSOR AT JOBSITE USING INFORMATION ABOVE.

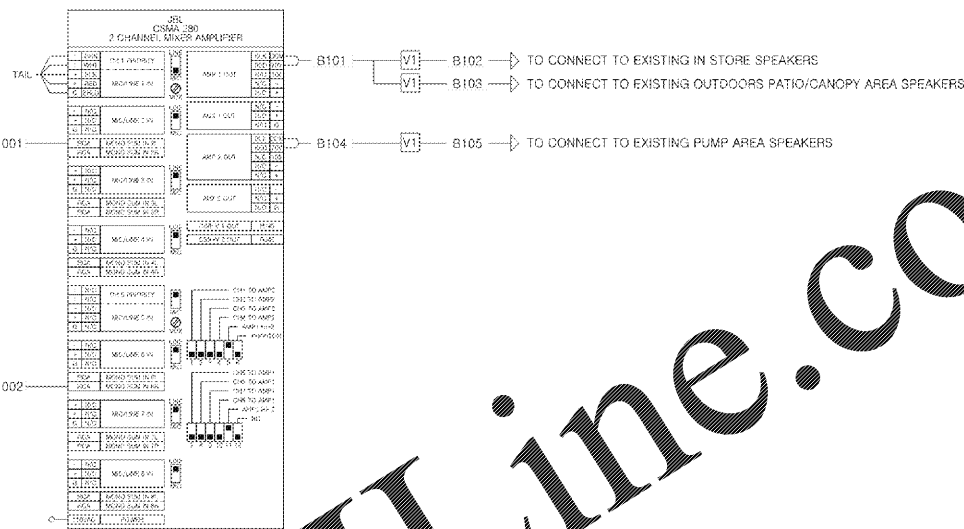
FOOD PICK UP AREA



TO CONNECT TO CUSTOMER SUPPLIED NETWORK.

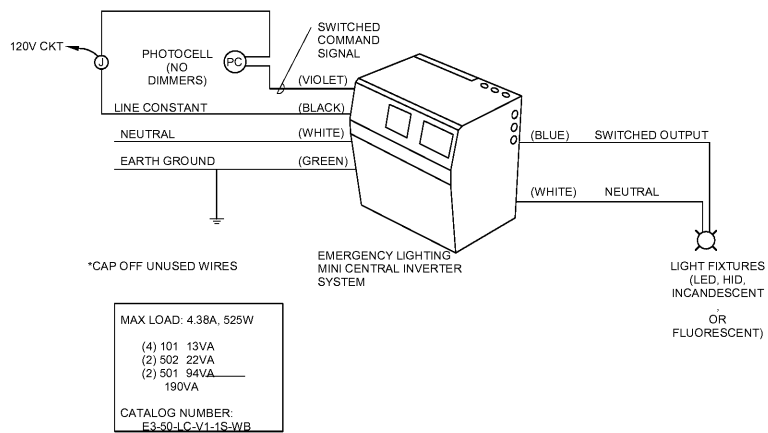
7 FOOD PICK UP AREA MICROPHONE DETAIL

3/4" = 1'-0"



6 LIGHT SENSOR FIELD INSTALLATION DETAIL

N.T.S.



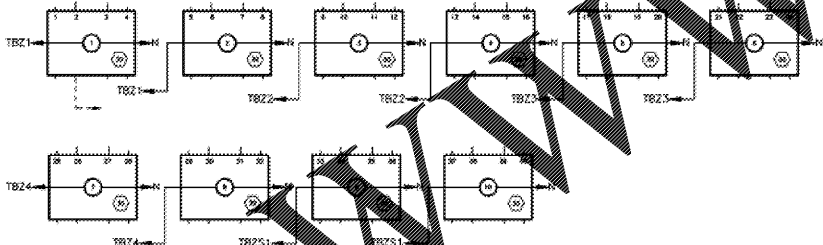
MAX LOAD: 4.38A, 525W

(4) 101 13VA
(2) 502 22VA
(2) 501 94VA
190VA

CATALOG NUMBER: E3-50-LG-V1-1S-WB

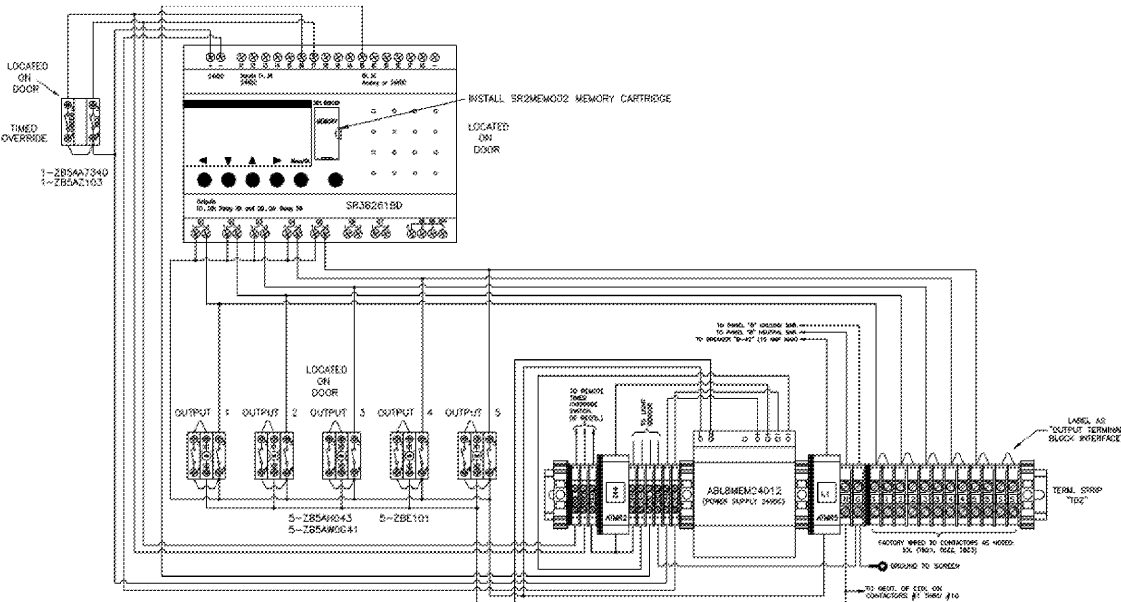
4 TYPICAL CONTACTOR WIRING DETAIL

12" = 1'-0"



5 LIGHTING CONTACTOR DETAIL

N.T.S.



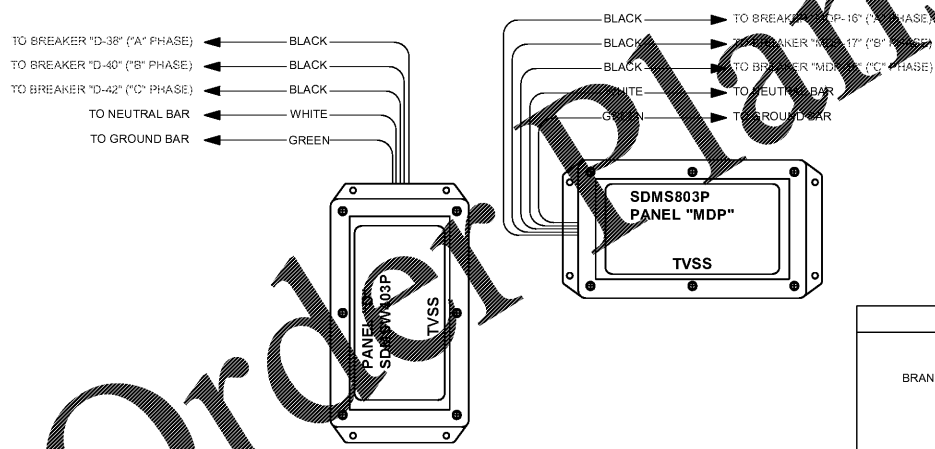
GENERAL NOTES FOR LIGHTING CONTROLS

- (LOC 1) ALL DASHED LINES REPRESENT FIELD WIRING BY CONTRACTOR.
- (LOC 2) OVERCURRENT PROTECTION FOR EACH LIGHTING CIRCUIT TO BE CONTROLLED BY THIS SPACE LIGHTING MANAGER IS PROVIDED BY OTHERS. THIS OVERCURRENT PROTECTION SHALL BE LIMITED TO 35 AMPS MAXIMUM FOR EACH CIRCUIT.
- (LOC 3) CONTROL FUSE 1"1" FOR LIGHTING CONTROL POWER MUST BE "4 AMPS". REPLACE ONLY WITH THE SAME TYPE AND RATING OF FUSE.
- (LOC 4) CONTROL FUSE "1/2" ON LIGHTING CONTROL STRIP MUST BE "2 AMPS". REPLACE ONLY WITH THE SAME TYPE AND RATING OF FUSE.
- (LOC 5) ALL FIELD WIRING TERMINALS MUST BE WIRED WITH A MINIMUM INSULATION RATING OF 90° C IF CIRCUIT IS RATED LESS THAN 100 AMPS OR A MINIMUM INSULATION RATING OF 75° C IF CIRCUIT IS RATED OVER 100 AMPS.
- (LOC 6) ALL CONTACTORS SHALL BE WIRED INDEPENDENTLY TO A TERMINAL BLOCK AT THE OUTPUT TERMINAL BLOCK INTERFACE.
- (LOC 7) THE WIRES FROM ALL CONTACTORS (1 THRU 10) MUST BE NUMBERED AT THE OUTPUT TERMINAL BLOCK INTERFACE.
- (LOC 8) THE CONTACTOR CONTROL WIRING CHART SHOWS OUTPUTS 1 THRU 10 OF THE SQUARE D 270 LIGHTING MANAGER. THIS CHART ALSO SHOWS THE NUMBER OF CONTACTORS WIRED TO EACH OUTPUT AT THE FACTORY. THIS CONFIGURATION MAY BE FIELD MODIFIED BY MOVING THE INDEPENDENTLY WIRED CONTACTOR COIL WIRE TO THE CORRESPONDING TERMINAL BLOCK OF ALL MAIN DISCONNECT AND BRANCH CIRCUIT PROTECTION SHALL BE AS SCHEDULED ON SHEET E300.
- (LOC 9) INSTALLER CONTRACTOR NOTE: DO NOT REMOVE TOPPER LIGHTING CONTROL WIRES. DO NOT CONNECT ANY OTHER CIRCUITS TO THIS CONTACTOR POLE.

** NOTE: THERE SHALL ONLY BE A TOTAL OF 4 WIRES LOCATED UNDER ANY ONE LEG OF THE OUTPUT TERMINAL BLOCK INTERFACE. FAILURE TO COMPLY TO THIS WARNING MAY CAUSE EXCESSIVE HEATING AND IMPROPER OPERATION OF THIS LIGHTING CONTROL SYSTEM.

3 INVERTER WIRING DIAGRAM

N.T.S.



120/208 VOLT COLOR CHART

NOTE
BRANCH CIRCUIT WIRING DONE BY SQUARE D IPaCs WILL BE COLOR CODED!
A PHASE - BLACK WIRE
B PHASE - RED WIRE
C PHASE - BLUE WIRE
ALL SINGLE PHASE WIRING IN BLACK
ALL WIRING ABOVE #10 AWG TO BE PHASE COLORED ON EACH END.

NOTE
* BEFORE WIRING BRANCH CIRCUITS REFER TO PANELBOARD SCHEDULES TO DETERMINE THE PHASE COLORS TO BE USED.
* ALL MAIN DISCONNECT AND BRANCH CIRCUIT PROTECTION SHALL BE AS SCHEDULED ON SHEET E410 & E411.

2 CONTACTOR CONTROL WIRING

12" = 1'-0"

1 SPD WIRING DETAIL

N.T.S.

RaceTrac
COPYRIGHT NOTICE
THESE PLANS ARE SUBJECT TO FEDERAL COPYRIGHT LAWS. ANY USE OF SAME WITHOUT THE EXPRESSED WRITTEN PERMISSION OF RACETRAC PETROLEUM, INC. IS PROHIBITED. 2016 RACETRAC PETROLEUM, INC.

DESIGNED BY PROFESSIONALS



ARCHITECTURE
ENGINEERING

3680 Pleasant Hill Road
Suite 200
Duluth, Georgia 30096
p 770.622.9858
f 770.622.9535
www.hillfoleyrossi.com

© Copyright (as noted below)
This drawing and all reproductions thereof are the property of Hill Foley Rossi & Associates, LLC (HFR). It is intended for the use of the project named herein. Reproduction without the written consent of HFR is prohibited. All reproductions to be returned to HFR upon project completion.

ISSUE/REVISION RECORD

DATE	DESCRIPTION
09/04/18	ISSUED FOR PERMIT

RaceTrac

RACETRAC PETROLEUM, INC.
200 GALLERIA PARKWAY SOUTHEAST
SUITE 900
ATLANTA, GEORGIA 30339
(770) 431-7600

PROJECT NAME

PEACHTREE PKWY & ENG.

PEACHTREE CORNERS

5780 PEACHTREE PKWY
PEACHTREE CORNERS, GA
RACETRAC STORE NUMBER

1201

PROTOTYPE SERIES 5.5K 2.0
2018 RH MO

PLAN MODIFICATION NOTICE

SPB NO. DATE

STANDARD PLAN BULLETINS (SPB) MODIFY THE PROTOTYPE SERIES SET NOTED ABOVE. THE LISTED SPB REPRESENTS THE LATEST MODIFICATION INCORPORATED TO THIS PROTOTYPE SERIES SET AT ORIGINAL RELEASE. THE ISSUE/REVISION RECORD COLUMN ABOVE LISTS ANY REVISIONS OR SPB INCORPORATED IN THIS SET AFTER THE ORIGINAL RELEASE. CONTACT RACETRAC ENGINEERING AND CONSTRUCTION FOR ANY SUBSEQUENT BULLETINS NOT INCORPORATED HEREIN.

PROFESSIONAL SEAL



09/04/18

PROJECT NUMBER
18.703.00

SHEET TITLE
CONTROL DIAGRAMS

SHEET NUMBER

E502

ISSUED FOR PERMIT