

RaceTrac
COPYRIGHT NOTICE
 THESE PLANS ARE SUBJECT TO FEDERAL COPYRIGHT LAWS. ANY USE OF SAME WITHOUT THE EXPRESSED WRITTEN PERMISSION OF RACETRAC PETROLEUM, INC. IS PROHIBITED. 2016 RACETRAC PETROLEUM INC.

DESIGN PROFESSIONALS
HR
 HILLFOLEYROSSI & ASSOCIATES

ARCHITECTURE
 ENGINEERING
 3680 Pleasant Hill Road
 Suite 200
 Duluth, Georgia 30096
 p 770.622.9858
 f 770.622.9535
 www.hillfoleyrossi.com

© Copyright (as stated below)
 This drawing and all information thereon are the property of Hill Fooleyrossi & Associates, LLC (HFA). It is intended for the use of the project named herein. Reproduction without the written consent of HFA is prohibited. All rights are to be retained to HFA upon project completion.

ISSUE/REVISION RECORD

DATE	DESCRIPTION
09/04/18	ISSUED FOR PERMIT

RaceTrac
 RACETRAC PETROLEUM, INC.
 200 GALLERIA PARKWAY SOUTHEAST
 SUITE 900
 ATLANTA, GEORGIA 30339
 (770) 431-7600

PROJECT NAME

PEACHTREE PKWY & ENG.

PEACHTREE CORNERS

5780 PEACHTREE PKWY
 PEACHTREE CORNERS, GA

RACETRAC STORE NUMBER

1201

PROTOTYPE SERIES 5.5K 2.0

2018 RH MO

PLAN MODIFICATION NOTICE

SPB NO.	DATE

STANDARD PLAN BULLETINS (SPB) MODIFY THE PROTOTYPE SERIES SET NOTED ABOVE. THE LISTED SPB REPRESENTS THE LATEST MODIFICATION INCORPORATED TO THIS PROTOTYPE SERIES SET AT ORIGINAL RELEASE. THE ISSUE/REVISION RECORD COLUMN ABOVE LISTS ANY REVISIONS OR SPB INCORPORATED IN THIS SET AFTER THE ORIGINAL RELEASE. CONTACT RACETRAC ENGINEERING AND CONSTRUCTION FOR ANY SUBSEQUENT BULLETINS NOT INCORPORATED HEREIN.

PROFESSIONAL SEAL



PROJECT NUMBER
 18.703.00

SHEET TITLE

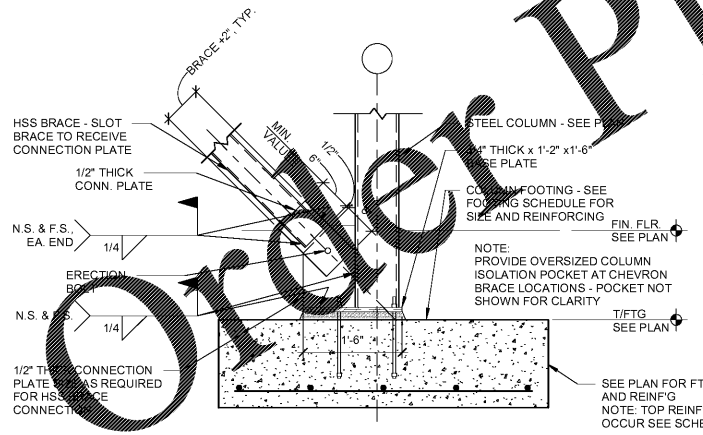
FRAME ELEVATIONS AND DETAILS

SHEET NUMBER

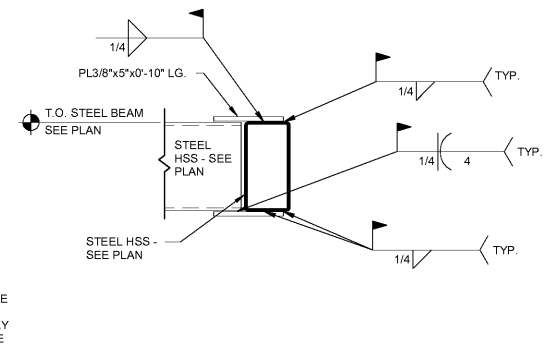
S434

ISSUED FOR PERMIT

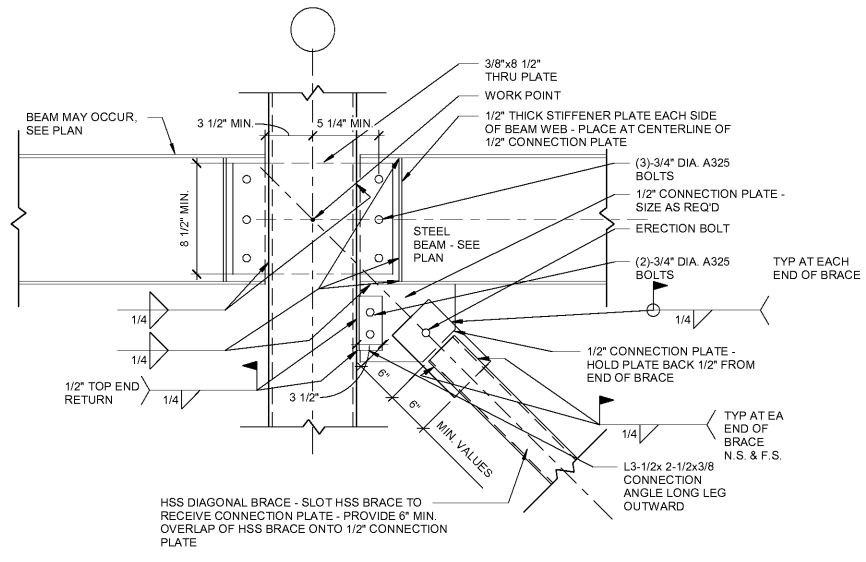
Plans @ www.LDILine.com



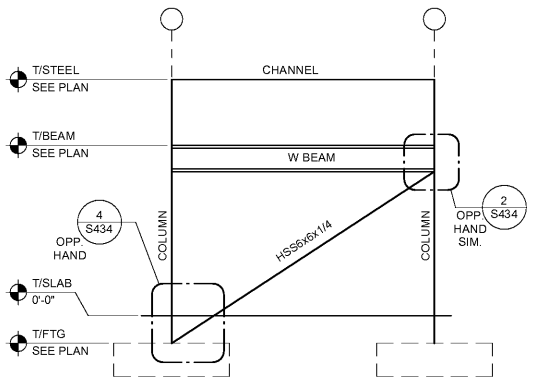
4 CHEVRON BRACE BASE CONNECTION
 3/4" = 1'-0"



3 HSS TO HSS BEAM CONNECTION
 3/4" = 1'-0"



2 DIAGONAL HSS BRACE CONNECTION DETAIL
 1" = 1'-0"



1 BRACED FRAME ELEVATION
 N.T.S.