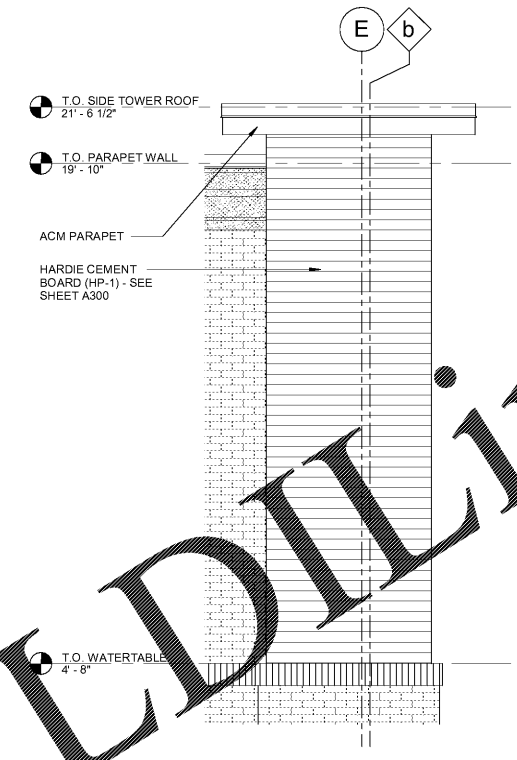
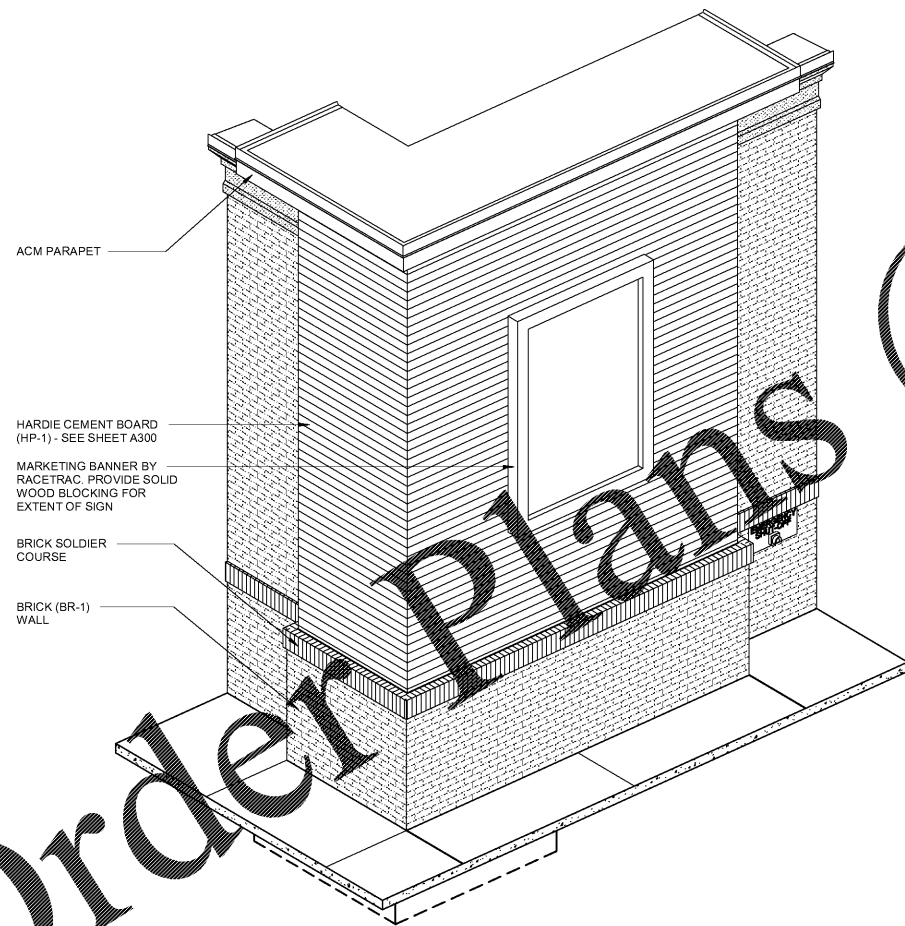


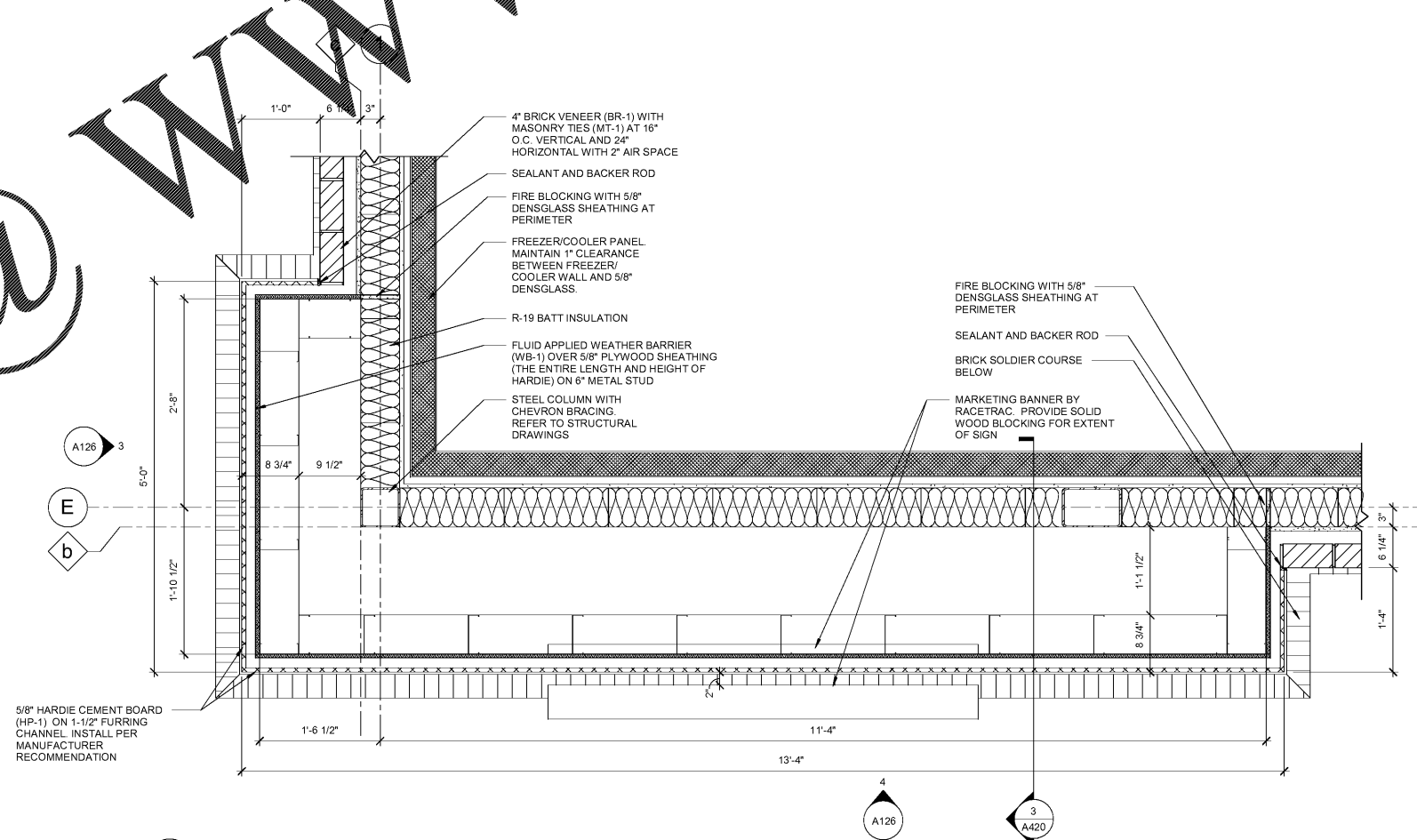
4 CORNER TOWER FRONT ELEVATION
3/8" = 1'-0"



3 CORNER TOWER SIDE ELEVATION
3/8" = 1'-0"



2 CORNER TOWER AXONOMETRIC



1 CORNER TOWER ENLARGED PLAN
1" = 1'-0"

RaceTrac
COPYRIGHT NOTICES
THESE PLANS ARE SUBJECT TO FEDERAL COPYRIGHT LAWS. ANY USE OF SAME WITHOUT THE EXPRESSED WRITTEN PERMISSION OF RACETRAC PETROLEUM, INC. IS PROHIBITED. 2016 RACETRAC PETROLEUM INC.

DESIGNED BY PROFESSIONALS



ARCHITECTURE
ENGINEERING
3680 Pleasant Hill Road
Suite 200
Duluth, Georgia 30096
p 770.622.9858
f 770.622.9535
www.hillfoleyrossi.com

© Copyright (as stated below)
This drawing and all information thereon are the property of Hill Foley Rossi & Associates, LLC (HFR). It is intended for the use of the project named herein. Reproduction without the written consent of HFR is prohibited. All rights are reserved to HFR upon project completion.

ISSUE/REVISION RECORD

DATE	DESCRIPTION
09/04/18	ISSUED FOR PERMIT

RaceTrac
RACETRAC PETROLEUM, INC.
200 GALLERIA PARKWAY SOUTHEAST
SUITE 900
ATLANTA, GEORGIA 30339
(770) 431-7600

PROJECT NAME
PEACHTREE PKWY & ENG.

PEACHTREE CORNERS
5780 PEACHTREE PKWY
PEACHTREE CORNERS, GA
RACETRAC STORE NUMBER
1201

PROTOTYPE SERIES 5.5K 2.0
2018 RH MO

PLAN MODIFICATION NOTICE

SPB NO.	DATE

STANDARD PLAN BULLETINS (SPB) MODIFY THE PROTOTYPE SERIES SET NOTED ABOVE. THE LISTED SPB REPRESENTS THE LATEST MODIFICATION INCORPORATED TO THIS PROTOTYPE SERIES SET AT ORIGINAL RELEASE. THE ISSUE/REVISION RECORD COLUMN ABOVE LISTS ANY REVISIONS OR SPB INCORPORATED IN THIS SET AFTER THE ORIGINAL RELEASE. CONTACT RACETRAC ENGINEERING AND CONSTRUCTION FOR ANY SUBSEQUENT BULLETINS NOT INCORPORATED HEREIN.



PROJECT NUMBER
18.703.00

SHEET TITLE
CORNER TOWER PLAN AND DETAILS

SHEET NUMBER
A126

ISSUED FOR PERMIT