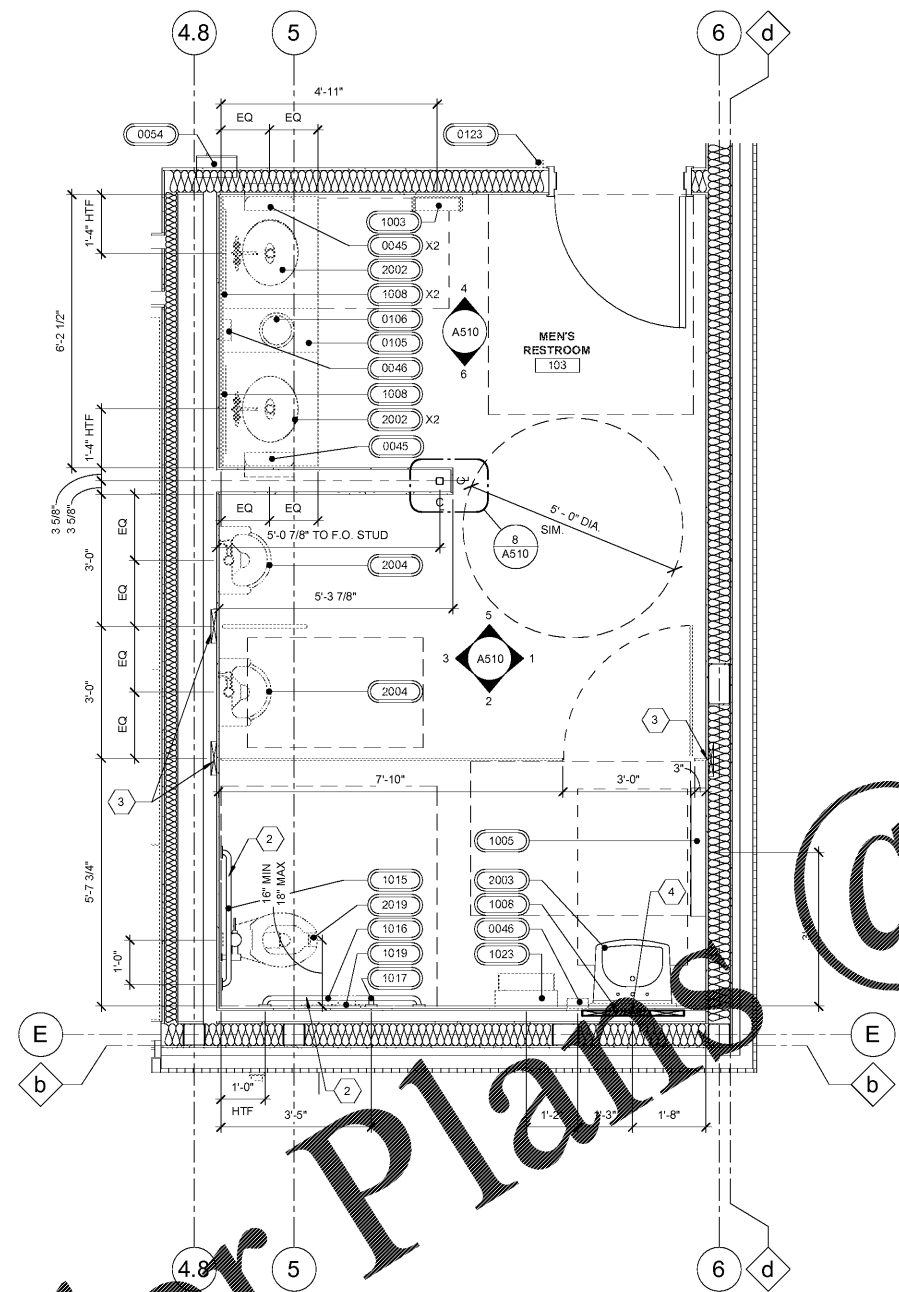
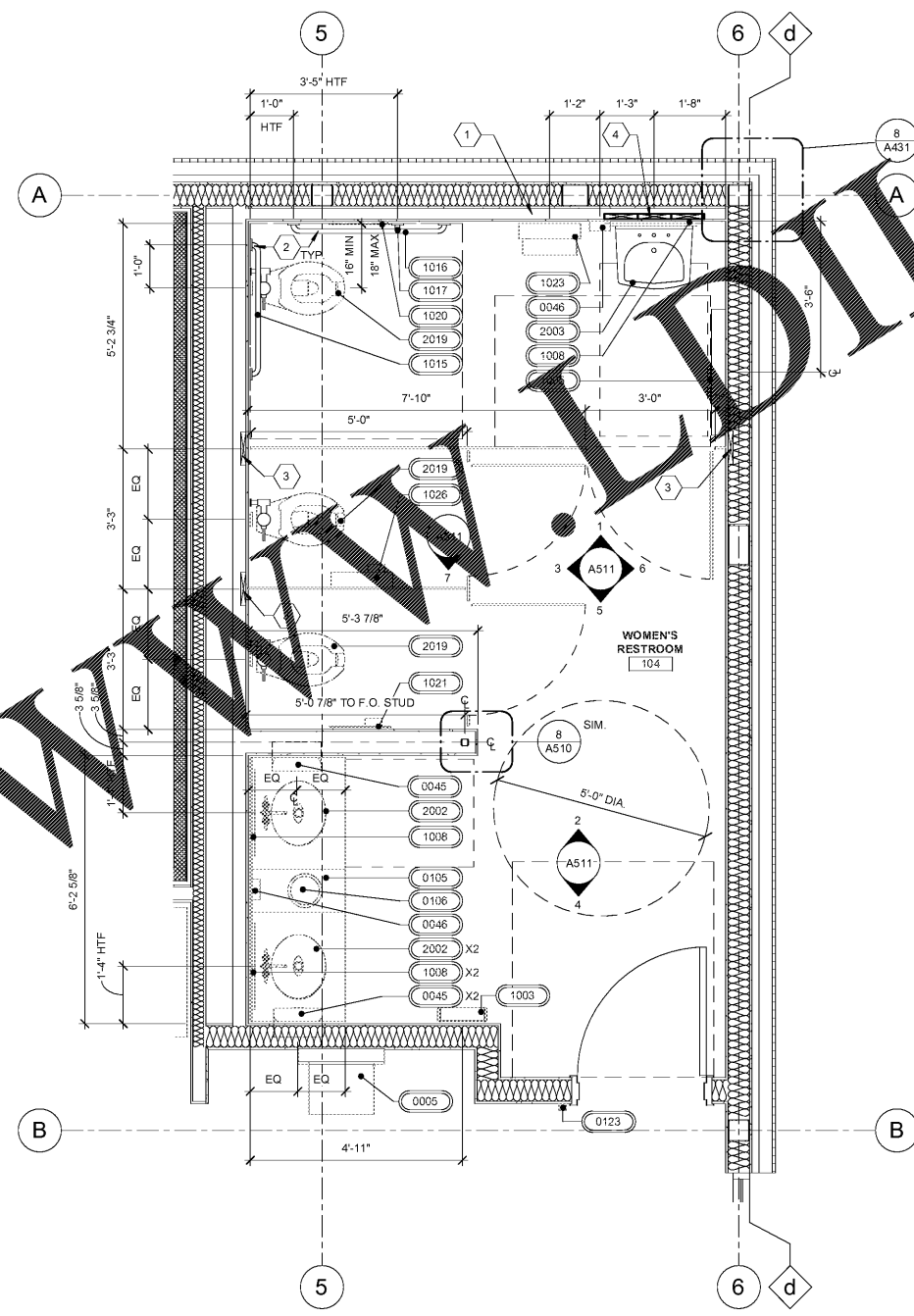


Order Plans @



FLOOR PLAN MENS RESTROOM  
1/2" = 1'-0"



FLOOR PLAN WOMENS RESTROOM  
1/2" = 1'-0"

GENERAL NOTES

1. ALL DIMENSIONS ARE TAKEN TO FACE OF FINISH UNLESS NOTED OTHERWISE.
2. WHEN INSTALLED AT THE LOCATIONS AND MOUNTING HEIGHT INDICATED, THE SPECIFIED FIXTURES PROVIDE FOR CLEAR SPACES, CLEARANCES AND MOUNTING HEIGHTS SHALL BE IN COMPLIANCE WITH APPLICABLE ACCESSIBILITY CODES.
3. INSTALL ACCESSORIES AND LIGHT FIXTURES WITH SCREWS OR BOLTS EXTENDING AT LEAST 1" INTO SOLID BLOCKING.
4. GREEN BOARD CEILING TYPICAL.
5. FOR TOILET ACCESSORIES, SEE EQUIPMENT SCHEDULE 1000 SERIES. FOR PLUMBING FIXTURES, SEE EQUIPMENT SCHEDULE 2000 SERIES.
6. INSTALL TILE TO HAVE A MAX. GROUT JOINTS 1/8" SEE FINISH SCHEDULE A500 FOR COLORS.
7. PROVIDE BLOCKING BEHIND ALL ACCESSORIES.
8. TOILET STALL DOOR FRAME ASSEMBLY SHALL BE SECURED TO PARTITION WITH STRUCTURE. DOOR FRAME SHALL BE MOUNTED DIRECTLY TO 3" METAL STUDS. FRAMING FOR STRUCTURAL SUPPORT SHALL BE REFER TO ELEVATION 8/A510 FOR PARTITIONING STATION INSTALLATION INSTRUCTIONS.
10. INSULATE P-TRAPS AND DRAIN PIECE AND EXPOSED HOT WATER PIPES WITH PROTECTIVE INSULATION WITH WHITE INSULATION.
11. SEE SECTIONS IN A400 SERIES FOR EXTERIOR WALL INFORMATION.

SHEET KEYNOTES

1. FUR OUT WALL WITH 3 5/8" METAL STUDS FLUSH WITH 6" PERIMETER STUDS TO ACCOMMODATE RESTROOM ACCESSORIES AND FIXTURES.
2. PROVIDE 2X10 BLOCKING FOR GRAB BARS. INSTALL PER MANUFACTURERS RECOMMENDATIONS. SEE A511 FOR HEIGHT.
3. PROVIDE 2X10 BLOCKING FOR PARTITION. INSTALL PER MANUFACTURERS RECOMMENDATIONS.
4. PROVIDE 2X10 BLOCKING FOR ADA SINK. INSTALL PER MANUFACTURERS RECOMMENDATIONS.

ENLARGED RESTROOM PLAN LEGEND

HTF: HOLD TO FINISH

**RaceTrac**  
CORPORATE OFFICE  
THESE PLANS ARE SUBJECT TO FEDERAL COPYRIGHT LAWS. ANY USE OF SAME WITHOUT THE EXPRESSED WRITTEN PERMISSION OF RACETRAC PETROLEUM, INC. IS PROHIBITED. 2016 RACETRAC PETROLEUM INC.

**DESIGN PROFESSIONALS**  
**HILLFOLEYROSSI & ASSOCIATES**  
ARCHITECTURE  
ENGINEERING  
3680 Pleasant Hill Road  
Suite 200  
Duluth, Georgia 30096  
p 770.622.9858  
f 770.622.9535  
www.hillfoleyrossi.com

ISSUE/REVISION RECORD

DATE	DESCRIPTION
09/04/18	ISSUED FOR PERMIT

**RaceTrac**  
RACETRAC PETROLEUM, INC.  
200 GALLERIA PARKWAY SOUTHEAST  
SUITE 900  
ATLANTA, GEORGIA 30339  
(770) 431-7600

PROJECT NAME  
**PEACHTREE PKWY & ENG.**

PEACHTREE CORNERS  
5780 PEACHTREE PKWY  
PEACHTREE CORNERS, GA  
RACETRAC STORE NUMBER

**1201**  
PROTOTYPE SERIES 5.5K 2.0  
2018 RH MO

PLAN MODIFICATION NOTICE  
SPB NO. DATE

STANDARD PLAN BULLETINS (SPB) MODIFY THE PROTOTYPE SERIES SET NOTED ABOVE. THE LISTED SPB REPRESENTS THE LATEST MODIFICATION INCORPORATED TO THIS PROTOTYPE SERIES SET AT ORIGINAL RELEASE. THE ISSUE/REVISION RECORD COLUMN ABOVE LISTS ANY REVISIONS OR SPB INCORPORATED IN THIS SET AFTER THE ORIGINAL RELEASE. CONTACT RACETRAC ENGINEERING AND CONSTRUCTION FOR ANY SUBSEQUENT BULLETINS NOT INCORPORATED HEREIN.

PROFESSIONAL SEAL



PROJECT NUMBER  
18.703.00

SHEET TITLE  
**RESTROOM ENLARGED PLAN**

SHEET NUMBER  
**A123**  
ISSUED FOR PERMIT