

ACCESSIBLE ROUTE:

AN ACCESSIBLE ROUTE SHALL BE PROVIDED FROM PUBLIC STREETS, SIDEWALKS AND PUBLIC TRANSPORTATION STOPS TO THE ACCESSIBLE ENTRANCE.

WALKS AND SIDEWALKS:

WALKS AND SIDEWALKS SHALL HAVE A CONTINUOUS COMMON SURFACE NOT INTERRUPTED BY STEPS OR BY ABRUPT CHANGES IN LEVEL EXCEEDING 1/4 INCH (PER 303 OF ADA 2010) AND SHALL BE A MINIMUM OF 3 FEET IN WIDTH.

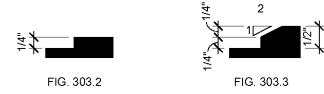


FIG. 303.2

FIG. 303.3

CURB RAMP:

CURB RAMP SHALL HAVE A MAXIMUM SLOPE OF 1:12 WITH A MAXIMUM CROSS SLOPE OF 1:48. THE CLEAR WIDTH SHALL BE A MINIMUM OF 36 INCHES WIDE.

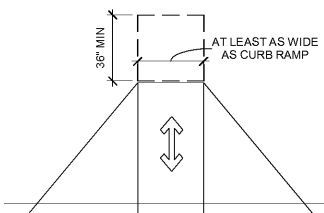


FIG. 406.7

ACCESSIBLE PARKING:

ACCESSIBLE PARKING SPACES SHALL BE LOCATED ON THE SHORTEST ACCESSIBLE ROUTE FROM PARKING TO AN ACCESSIBLE ENTRANCE.

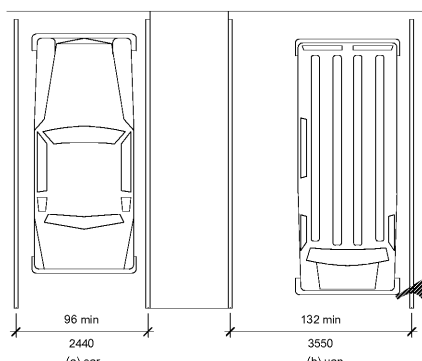


FIG. 502.2

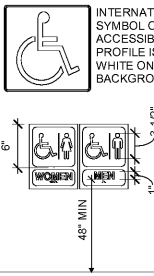
RAMP:

ANY PATH OF TRAVEL SHALL BE CONSIDERED A RAMP IF A SLOPE IS GREATER THAN 1:20 (1:12 MAXIMUM FOR RAMPS).

HANDRAILS SHALL PROVIDE EDGE PROTECTION FOR RAMPS. RAMPS SHALL HAVE EDGE PROTECTION (PER 405.9 OF ADA 2010) ON EACH SIDE OF RAMP RUN AND EACH SIDE OF RAMP.

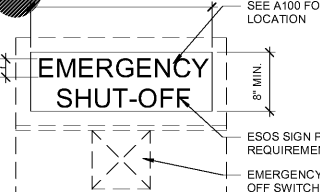
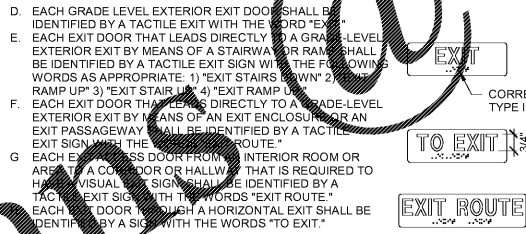
SIGNS:

SIGNS SHALL COMPLY WITH 703 OF ADA 2010. WHEN SIGNS IDENTIFY PERMANENT ROOMS AND SPACES OF A BUILDING OR SITE, THEY SHALL COMPLY WITH SECTIONS BELOW.



INTERNATIONAL SYMBOL OF ACCESSIBILITY. PROFILE IS WHITE ON BLUE BACKGROUND.

DIRECTIONAL ARROW WHERE NEEDED TO PROVIDE DIRECTION OF ACCESSIBLE PATH.

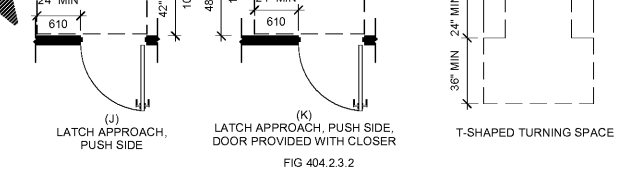
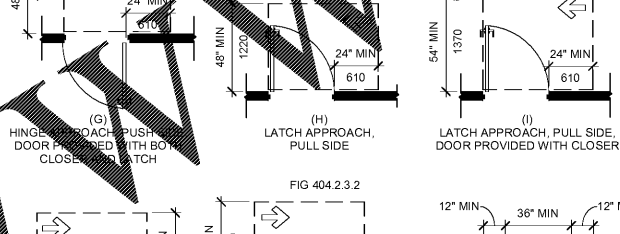
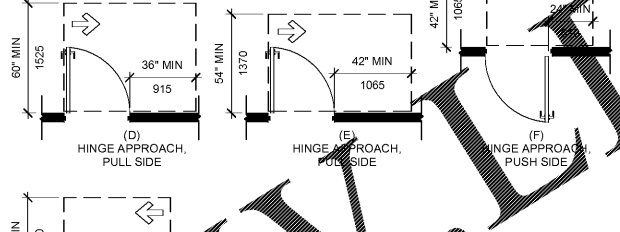
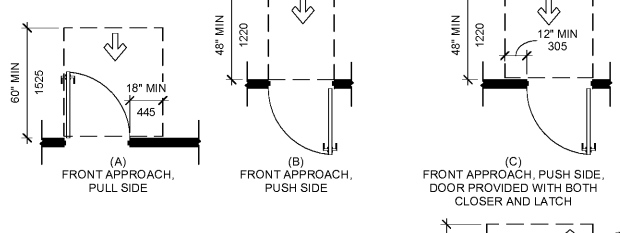


EMERGENCY SHUT OFF SWITCH SIGN

NOTES: 1. EMERGENCY SHUT OFF SWITCH (ESOS) AND SIGN TO BE PERMANENTLY AFFIXED TO THE BUILDING STRUCTURE.

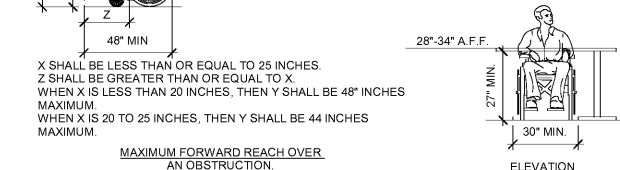
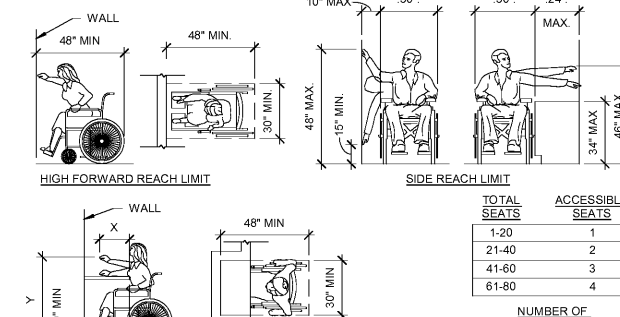
DOORS:

LATCHES AND LOCKSETS: PROVIDE LEVER TYPE, PUSH-PULL OR PANIC TYPE HARDWARE 34 INCHES TO 48 INCHES ABOVE FLOOR.



SALES/SELF SERVICE AREAS:

FOOD SERVICE AREAS SHOULD BE INSTALLED TO ALLOW AT LEAST 50% OF THE SELF SERVICE SHELVES TO BE WITHIN THE REACH RANGES OF 15 INCH LOW AND 48 INCH HIGH PER 2010 STANDARDS, SECTION 504.5.1.

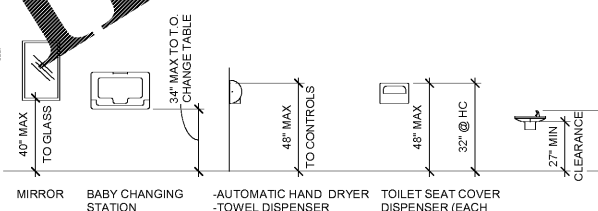


PROTRUDING OBJECTS:

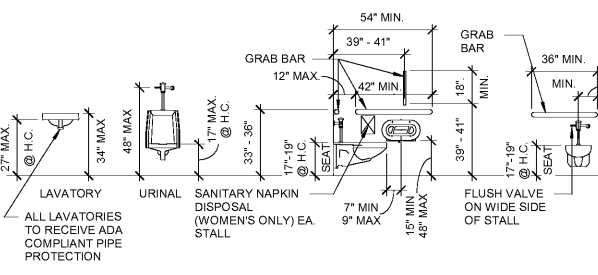
PROJECTIONS FROM WALLS WITH LEADING EDGE BETWEEN 27 INCHES AND 80 INCHES ABOVE FLOOR MAY PROJECT 4 INCHES MAXIMUM.

SANITARY FACILITIES:

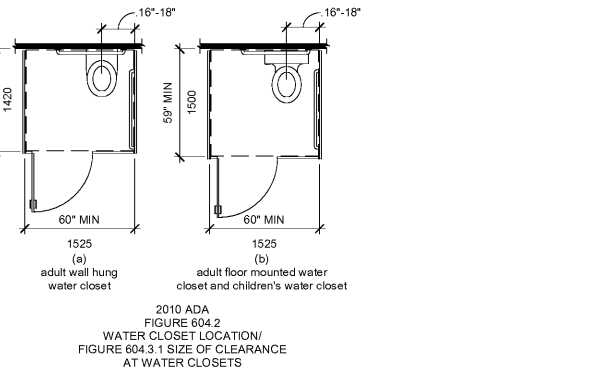
ACCESSIBLE COMPARTMENT DOORS SHALL BE SELF CLOSING. THE INSIDE AND OUTSIDE OF THE COMPARTMENT DOOR SHALL BE EQUIPPED WITH A DOOR PULL IMMEDIATELY BELOW THE LATCH.



TOILET ACCESSORIES:



PLUMBING FIXTURES:



ELECTRICAL:

ELECTRICAL RECEPTACLES (15, 20 AND 30 AMP) SHALL BE AT LEAST 15 INCHES ABOVE THE FLOOR.

FIRE EXTINGUISHER:

FIRE EXTINGUISHERS SHALL BE INSTALLED SO THE HIGHEST OPERABLE PART IS AT MAXIMUM HEIGHT OF 48" AND LOWEST OPERABLE PART IS AT MINIMUM OF 15" ABOVE THE FINISHED FLOOR.

