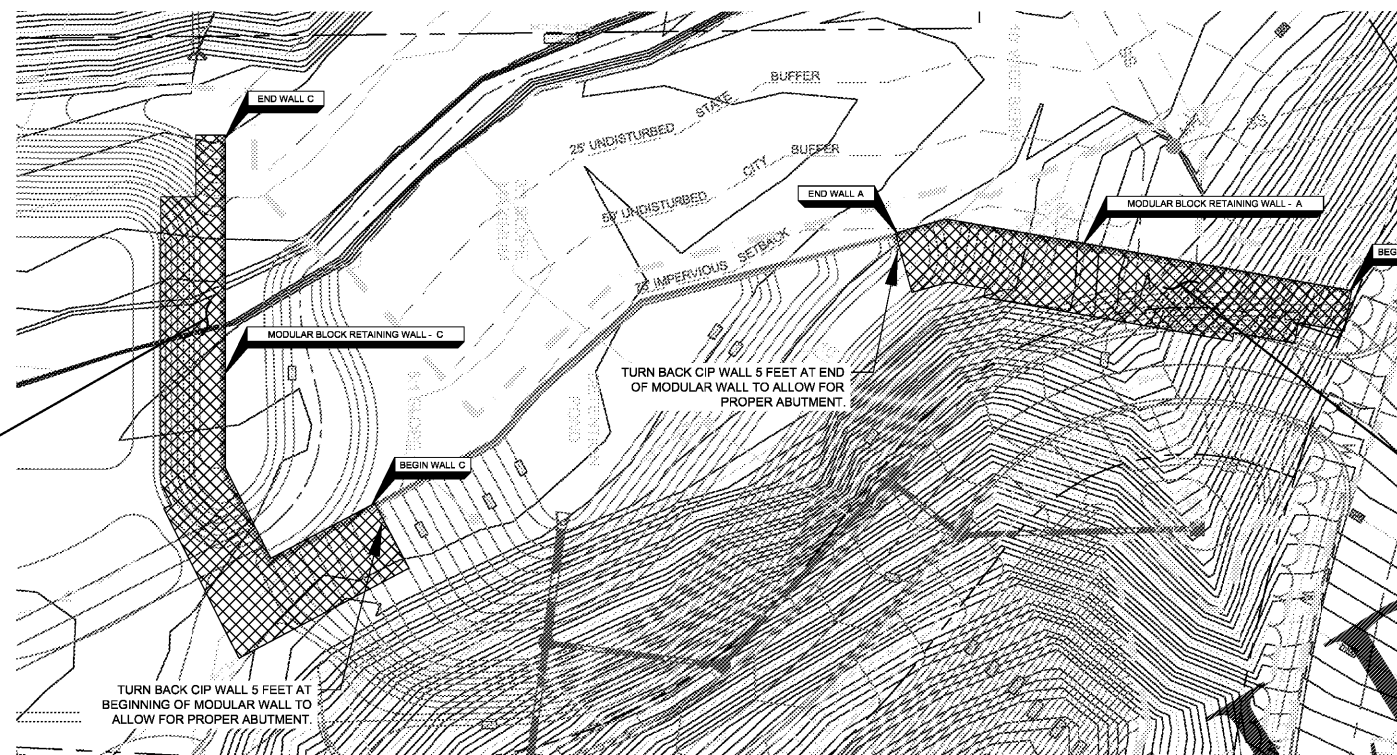




Know what's below
Call before you dig



NOTE: CONSTRUCTION VERIFICATION OF THE WALL INSTALLATION BY AN ENGINEER IS REQUIRED AND MUST BE PROVIDED BY A KNOWLEDGEABLE GEOTECHNICAL ENGINEER FAMILIAR WITH MECHANICALLY STABILIZED STRUCTURES.

PLAN VIEW
NOT TO SCALE

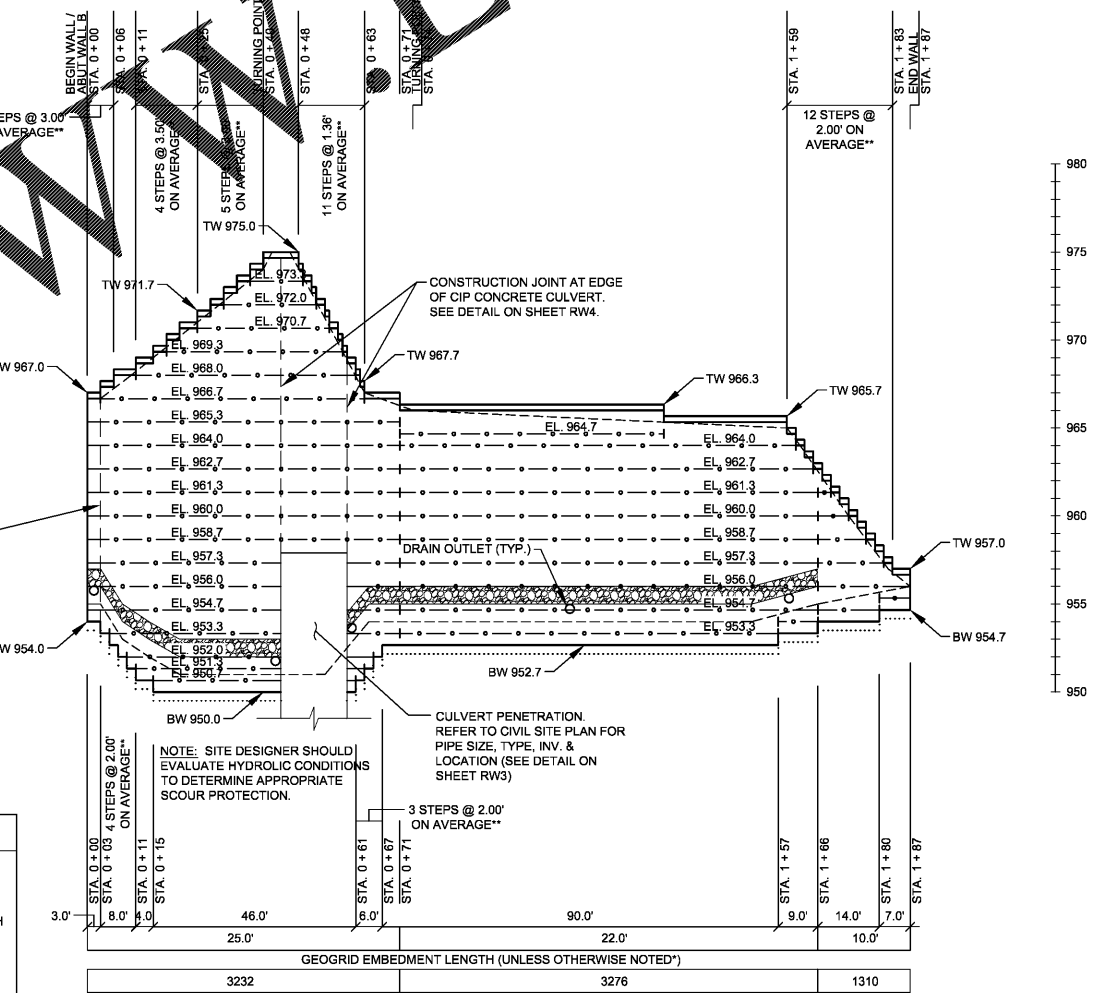
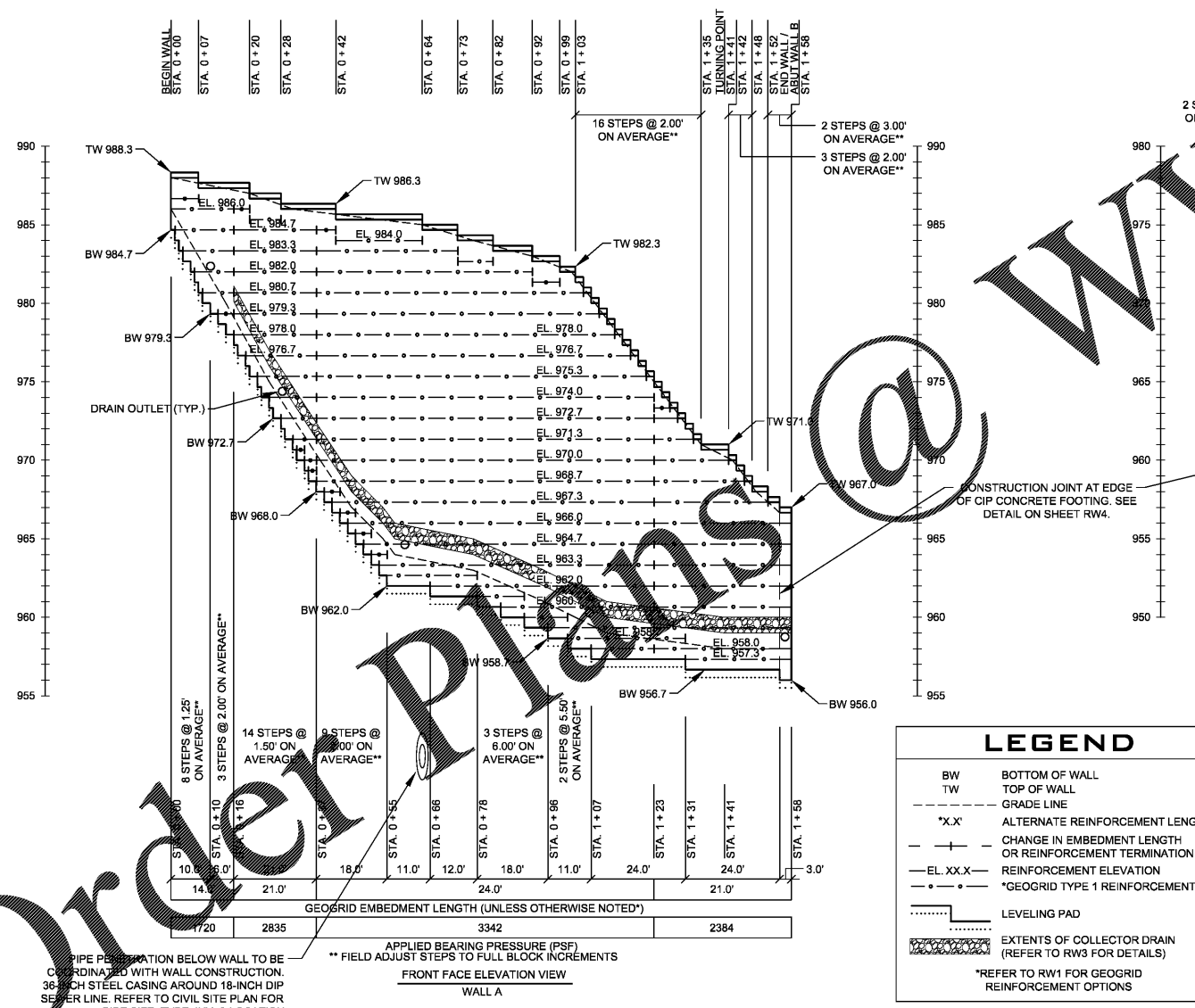
THE ADJACENT PLAN VIEW HAS BEEN COPIED FROM CIVIL SITE PLANS PREPARED BY COLUMBIA ENGINEERING DATED 01/15/2018 AND RECEIVED BY EES ON 02/14/2018 FOR REFERENCE. REFER TO CIVIL SITE PLANS FOR STRUCTURE LAYOUT INFORMATION. MODULAR BLOCK WALL LAYOUT SHALL BE APPROVED BY THE CIVIL SITE DESIGNER PRIOR TO CONSTRUCTION. THE TOP OF WALL LOCATION IS SHOWN. THE SURVEYOR SHALL ADJUST THE BOTTOM OF WALL LOCATION TO ACCOUNT FOR WALL BATTER.

APPROXIMATE EXTENTS OF GEOGRID REINFORCEMENT

APPROXIMATE EXTENTS OF GEOGRID REINFORCEMENT

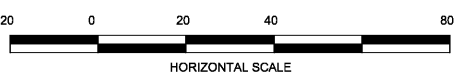
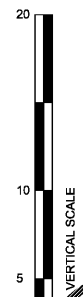
TURN BACK CIP WALL 5 FEET AT BEGINNING OF MODULAR WALL TO ALLOW FOR PROPER ABUTMENT.

TURN BACK CIP WALL 5 FEET AT END OF MODULAR WALL TO ALLOW FOR PROPER ABUTMENT.



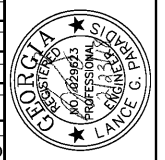
LEGEND

- BW BOTTOM OF WALL
 - TW TOP OF WALL
 - GRADE LINE
 - "X.X" ALTERNATE REINFORCEMENT LENGTH
 - - - CHANGE IN EMBEDMENT LENGTH OR REINFORCEMENT TERMINATION
 - EL. XX.X- REINFORCEMENT ELEVATION
 - - - *GEOGRID TYPE 1 REINFORCEMENT
 - LEVELING PAD
 - EXTENTS OF COLLECTOR DRAIN (REFER TO RW3 FOR DETAILS)
- *REFER TO RW1 FOR GEOGRID REINFORCEMENT OPTIONS



NO.	DATE	REVISION
1	02/23/18	ISSUE FOR CONSTRUCTION

DESIGNED BY: CWL
 CHECKED BY: LGP
 DATE: 02/23/18
 SCALE: AS NOTED



RaceTrac
 RACETRAC PETROLEUM, INC.
 3225 CUMBERLAND BOULEVARD
 SUITE 100 ATLANTA, GA 30339
 (770) 431-7600
 CLIENT

ENGINEERED EARTH SOLUTIONS, LLC
 441 CREEKSTONE RIDGE
 WOODSTOCK, GEORGIA 30188
 TEL: (770) 592-2950 FAX: (770) 592-2953
 EMAIL: ENGINEERING@EESOLS.COM
 ENGINEEREARTH SOLUTIONS.COM



RACETRAC #1301

GEORGIA

PEACHTREE CORNERS

PLAN & ELEVATION VIEW SHEET

SHEET
RW2
OF 4

PROJECT NO.: W18-0064

THIS DESIGN IS BASED UPON SPECIFIC PROPERTIES OF MATERIALS WHICH ARE PROPRIETARY. ANY SUBSTITUTION OF THE SPECIFIED PRODUCTS OR CHANGE IN STRUCTURE GEOMETRY WILL INVALIDATE THIS DESIGN. THIS DRAWING IS BEING FURNISHED FOR USE ON THIS SPECIFIC PROJECT ONLY. ANY PARTY ACCEPTING THIS DOCUMENT DOES SO IN CONFIDENCE AND AGREES THAT IT SHALL NOT BE DUPLICATED, IN WHOLE OR IN PART, NOR DISCLOSED TO OTHERS WITHOUT THE CONSENT OF ENGINEERED EARTH SOLUTIONS, LLC. THIS DRAWING, DESIGN NOTES, AND ASSOCIATED CALCULATIONS HAVE BEEN PREPARED BY ENGINEERED EARTH SOLUTIONS, LLC. FROM INFORMATION PROVIDED BY OTHERS. FINAL DETERMINATION OF THE SUITABILITY OF ANY INFORMATION CONTAINED HEREIN IS THE RESPONSIBILITY OF THE USER.

COPYRIGHT © 2018 ENGINEERED EARTH SOLUTIONS, LLC.