

N/F
DREF TECK PARK, LLC
DB 19780 / PG 224
ZONED: M-1

N/F
5720 PEACHTREE PARKWAY
HOLDINGS, LLC
DB 54260 / PG 852
ZONED: M-1

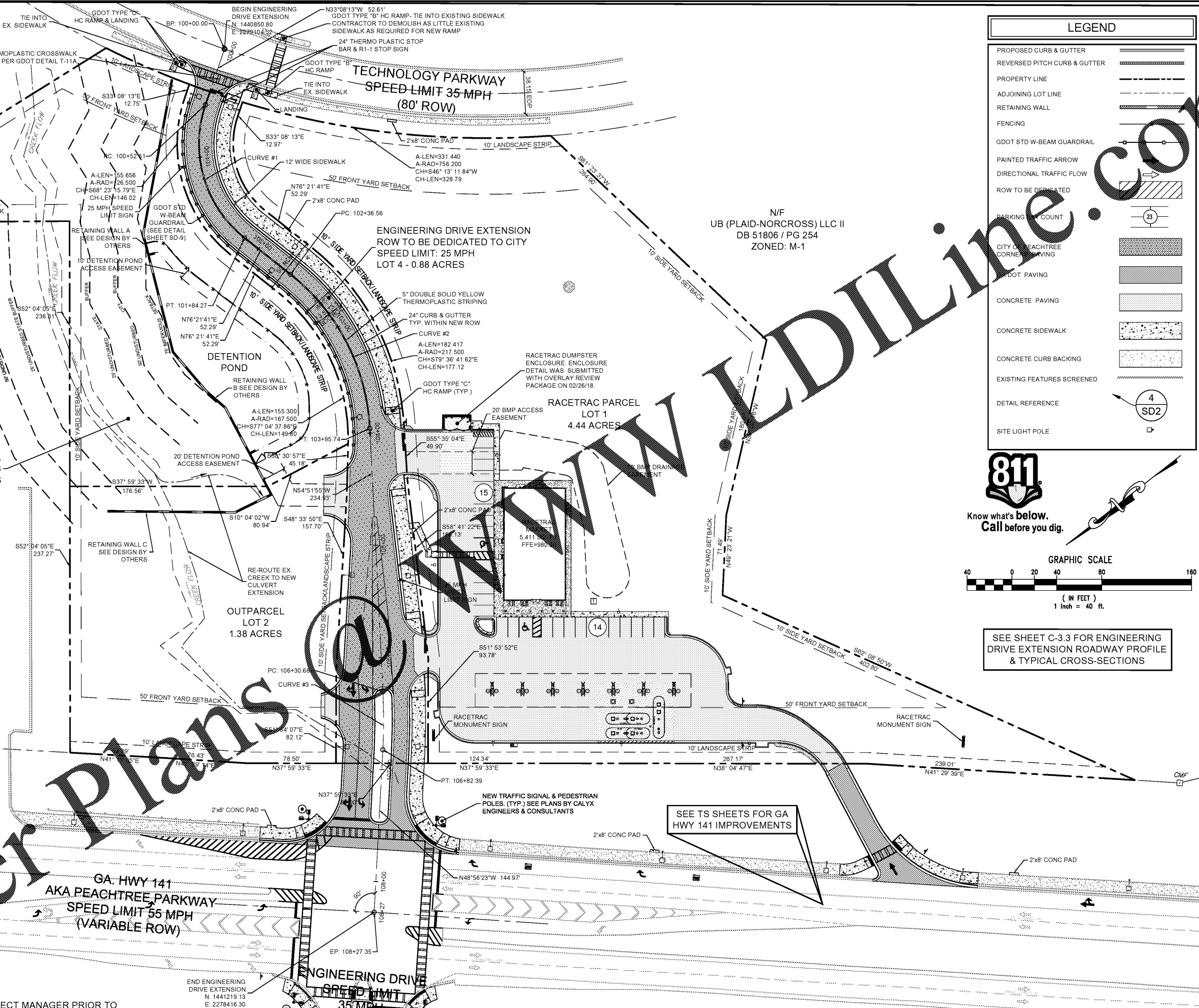
N/F
UB (PLAID-NORCROSS) LLC II
DB 51806 / PG 254
ZONED: M-1

ENGINEERING DRIVE EXTENSION
ROW TO BE DEDICATED TO CITY
SPEED LIMIT: 25 MPH
LOT 4 - 0.88 ACRES

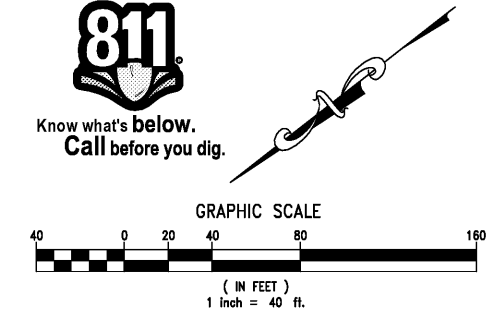
RACETRAC PARCEL
LOT 1
4.44 ACRES

OUTPARCEL
LOT 2
1.38 ACRES

OUTPARCEL
LOT 3
1.77 ACRES



LEGEND	
PROPOSED CURB & GUTTER	
REVERSED PITCH CURB & GUTTER	
PROPERTY LINE	
ADJOINING LOT LINE	
RETAINING WALL	
FENCING	
GDOT STD W-BEAM GUARDRAIL	
PAINTED TRAFFIC ARROW	
DIRECTIONAL TRAFFIC FLOW	
ROW TO BE DEDICATED	
PARKING COUNT	
CITY CORNER PEACHTREE CORNER PAVING	
DOT PAVING	
CONCRETE PAVING	
CONCRETE SIDEWALK	
CONCRETE CURB BACKING	
EXISTING FEATURES SCREENED	
DETAIL REFERENCE	
SITE LIGHT POLE	



SEE SHEET C-3.3 FOR ENGINEERING
DRIVE EXTENSION ROADWAY PROFILE
& TYPICAL CROSS-SECTIONS

SEE TS SHEETS FOR GA
HWY 141 IMPROVEMENTS

FOR INFORMATION ONLY

CURVE #1
PI= 101+18.40
Δ= 70°30'06"(LT)
D= 53°32'50.85"
T= 75.622'
L= 131.662'
R= 107'
E= 24.03'
SE= +2.00%
PI= N: 1440894.85 E: 2279075.77

FOR INFORMATION ONLY

CURVE #2
PI= 103+16.15
Δ= 48°46'24"(LT)
D= 30°38'22.04"
T= 84.774'
L= 159.184'
R= 187.0'
E= 18.32'
SE= +2.00%
PI= N: 1440908.03 E: 2278627.74

FOR INFORMATION ONLY

CURVE #3
PI= 106+56.53
Δ= 05°55'32"(LT)
D= 11°27'32.96"
T= 25.879'
L= 51.711'
R= 500'
E= 0.67'
SE= +2.00%
PI= N: 1441108.91 E: 2278545.12

CONTACT RACETRAC PETROLEUM, INC. PROJECT MANAGER PRIOR TO
ANY REVISIONS TO THE PLAN SUPPLIED BY RACETRAC PETROLEUM, INC.

NO.	DATE	REVISIONS & JURISDICTIONAL COMMENTS
1	02/26/18	JURISDICTIONAL COMMENTS
5	06/29/18	OWNER REVISIONS & JURISDICTIONAL COMMENTS
9	06/07/18	JURISDICTIONAL COMMENTS
11	10/02/18	JURISDICTIONAL COMMENTS
13	11/02/18	ISSUE FOR BID/DOWNER COMMENTS

Columbia Engineering
2862 BILFORD HIGHWAY
DUBLIN, GEORGIA 30098
(770) 925-0357

GEORGIA REGISTERED PROFESSIONAL ENGINEER
No. 030074
J. L. LOST

THESE PLANS ARE SUBJECT TO FEDERAL COPYRIGHT LAWS. ANY USE OF SAME WITHOUT THE EXPRESSED WRITTEN PERMISSION OF RACETRAC PETROLEUM, INC. IS PROHIBITED.

RACETRAC PETROLEUM, INC.
200 GALLERIA PARKWAY
SUITE 800, ATLANTA, GA 30339
(770) 451-7600

OVERALL SITE PLAN	PEACHTREE CORNERS RACETRAC
5780 PEACHTREE PARKWAY PEACHTREE CORNERS, GEORGIA GWINNETT COUNTY DIST. 6, L.L. 284, PARCELS: 6-284-16, -18, -40, -56	
DRAWN-BY: JCW	
DATE: 01/15/2018	
SCALE: 1" = 40'	
DRAWING NAME: 4607.00.dwg	
C-3.1	1
SHEET NO.	VERSION