

MP PANELBOARD SCHEDULE table with columns for MP, MAINS, TYPE, MOUNTING, and CTKT. Lists various electrical loads and their specifications.

PLP PANELBOARD SCHEDULE table with columns for PLP, MAINS, TYPE, MOUNTING, and CTKT. Lists various electrical loads and their specifications.

PANELBOARD SCHEDULE - MDP table with columns for MDP, MAINS, TYPE, MOUNTING, and CTKT. Lists various electrical loads and their specifications.

ALL PANELBOARDS, TRANSFORMERS, TRANSFER SWITCH KIT AND DISCONNECTS WILL BE SUPPLIED BY THE OWNER (OR REASER).

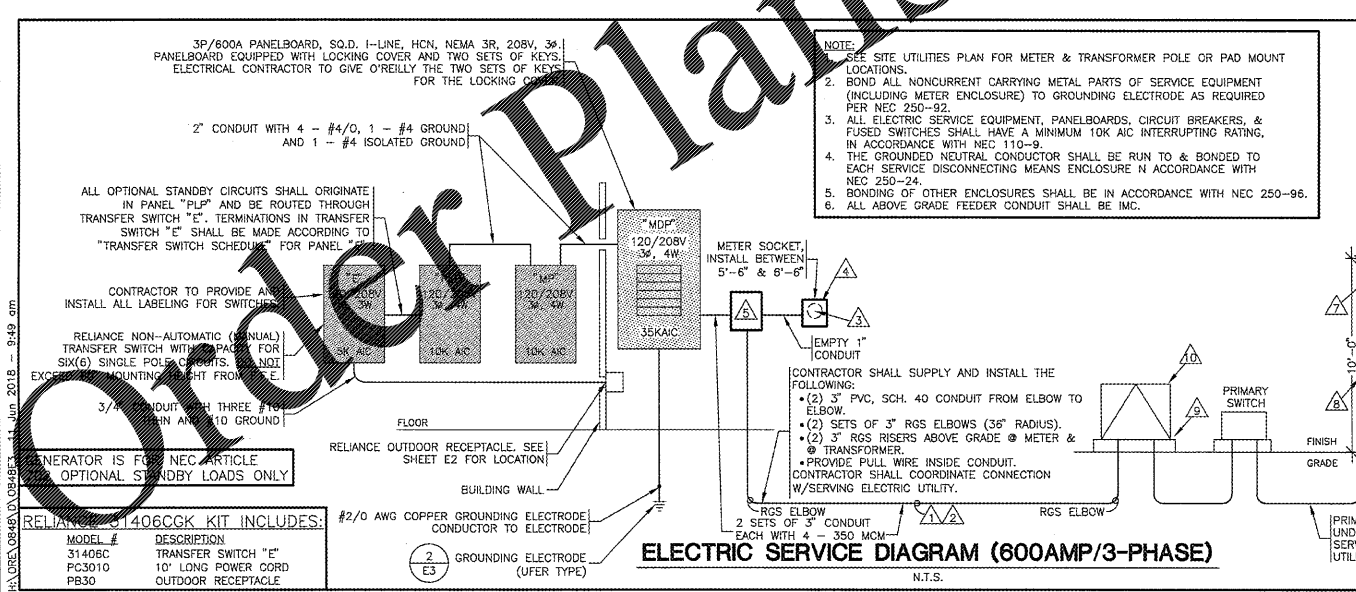
GRAYBAR ELECTRIC CO. INC. 11885 LACKLAND ROAD ST. LOUIS, MO. 63146

GRAYBAR O'REILLY TEAM EMAIL: oreilly@graybar.com TOLL FREE: (314) 573-2080

E TRANSFER SWITCH SCHEDULE table with columns for POSITION, CIRCUIT BREAKER, and LOAD DESCRIPTION.

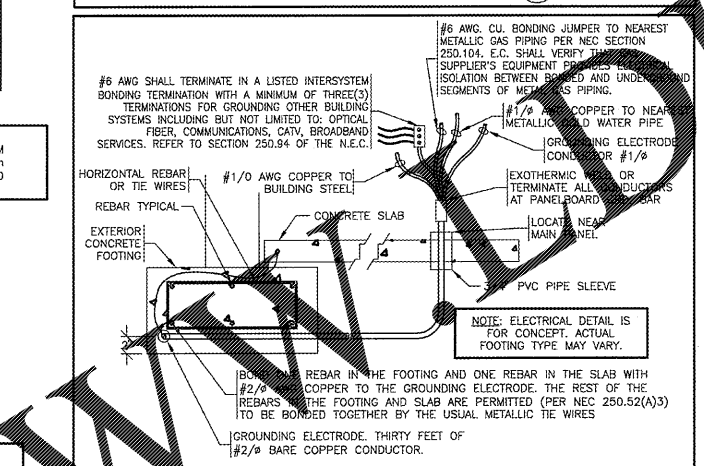
NOTE: ALL BRANCH CIRCUITS SHALL HAVE AN EQUIPMENT GROUNDING CONDUCTOR ROUTED WITH THE CIRCUIT CONDUCTORS.

GENERAL ELECTRICAL NOTES section containing 22 numbered notes regarding electrical installation standards and requirements.



NOTE: 1. BOND ALL NONCURRENT CARRYING METAL PARTS OF SERVICE EQUIPMENT (INCLUDING METER ENCLOSURE) TO GROUNDING ELECTRODE AS REQUIRED, PER NEC 250-92.

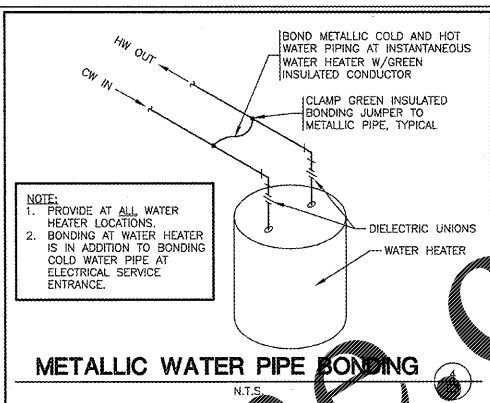
BONDING REQUIREMENTS section with notes on service equipment grounding and bonding.



NOTE: GROUNDING ELECTRODE TEST. MEASURE AND RECORD GROUND RESISTANCE FROM SYSTEM NEUTRAL CONNECTION AT SERVICE ENTRANCE TO CONVENIENT GROUND REFERENCE POINT USING SUITABLE GROUND TESTING EQUIPMENT.

TYPICAL ISOLATED GROUND RECEPTACLE diagram showing wiring to an isolated ground panel.

ELECTRIC SERVICE RESPONSIBILITIES table with columns for ITEM NO., DESCRIPTION, UTILITY CO., CONTRACTOR, and INSTALLED BY.



ELECTRICAL SYMBOL LEGEND & ABBREVIATIONS section listing symbols for various electrical components.

- AC LOCATED ABOVE COUNTER
AFF ABOVE FINISHED FLOOR
BCU BLOWER COIL UNIT
CDU CONDENSING UNIT
EF EXHAUST FAN
EFU ELECTRIC FURNACE
FURN GAS FURNACE
AHU AIR HANDLER
HP HEAT PUMP UNIT
RTU PACKAGED ROOFTOP UNIT
IMC INTERMEDIATE METALLIC TUBING
LC LIGHTING CONTRACTOR
M MOTOR STARTING
R RED IN COLOR COVERPLATE
MP MOTOR STARTING W/PILOT LIGHT
FURN GAS FURNACE
AHU AIR HANDLER
HP HEAT PUMP UNIT
LPO UN-POWERED OUTLET
TS TIME SWITCH
W WALL OUTLET (46" AFF SEE MOUNTING HEIGHTS)
WEATHERPROOF (ENCLOSURE)
WP EXPLOSION PROOF ASSEMBLY
GFCI GROUND FAULT CIRCUIT INTERRUPT
ELECTRICAL METALLIC TUBING
CEILING MOUNTED

Craig A. Schneider, AIA ARCHITECT logo and contact information including address and phone numbers.

O'Reilly Auto Parts logo and address: 233 SOUTH PATTERSON SPRINGFIELD, MISSOURI 65802