

**EMERGENCY/EXIT LIGHTING**

PLACE EXIT SIGNS HIGH ENOUGH TO BE SEEN ABOVE ALL MERCHANDISE WITH THE FOLLOWING LIMITATION: THE MAXIMUM HEIGHT FOR AN EXIT LIGHT ASSOCIATED WITH A SPECIFIC OPENING (I.E. MOUNTED OVER A DOOR OR OPENING) SHALL BE NO GREATER THAN THE CODE ALLOWED 6'-8" ABOVE THE TOP EDGE OF THE DOOR OR OPENING.

**INTERIOR LIGHTING ZONES**

ALL INTERIOR LIGHTING WITHIN PARTS AREA "A" SHALL BE CONSIDERED "SALES" ZONE (ON ONLY WHEN STORE IS OPEN FOR BUSINESS).

ALL INTERIOR LIGHTING WITH PARTS AREA "B", PARTS AREA "C", RESTROOMS, OFFICE, AND BREAK AREA SHALL BE CONSIDERED "WORK" ZONES (ON WHENEVER THERE IS MOTION OR THE STORE IS OPEN).

**AUTOMATIC LIGHTING CONTROL**

COMPLIANCE WITH ENERGY CODE IS ACHIEVED BY:

1. ONCE THE EMS HAS BEEN PROGRAMMED, THE INTERIOR AND EXTERIOR LIGHTS WILL TURN ON AND OFF USING THE FOLLOWING LOGIC: SEE SHEETS VS1, VS2 AND VS3

INTERIOR WORK LIGHTS WILL TURN ON WITH FIRST MOTION IN THE STORE AND WILL TURN OFF 15 MINUTES AFTER LAST MOTION ONCE THE STORE IS CLOSED.

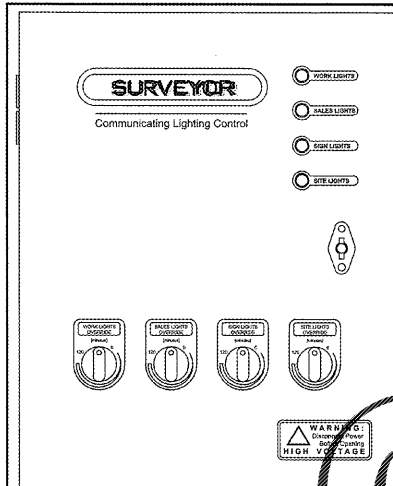
INTERIOR SALES LIGHTS WILL TURN ON AT STORE OPENING AND TURN OFF 15 MINUTES AFTER STORE CLOSING.

EXTERIOR SIGN LIGHTS WILL TURN ON WHEN IT IS DARK ENOUGH OUTSIDE ANYTIME DURING STORE HOURS, AND WILL TURN OFF AT STORE CLOSING.

EXTERIOR SITE LIGHTS WILL TURN ON WHEN IT IS DARK ENOUGH OUTSIDE AND IT IS WITHIN STORE HOURS OR THERE IS MOTION IN THE STORE. THEY WILL TURN OFF 30 MINUTES AFTER LAST MOTION ONCE THE STORE IS CLOSED.

FOR NEW CONSTRUCTION LOCATIONS ONLY, THERE IS A TEMPORARY PROGRAM TO KEEP SIGN AND SITE LIGHTS ON UNTIL MIDNIGHT RATHER THAN THE TIMES INDICATED ABOVE. O'REILLY WILL DISABLE THIS PROGRAM ONE YEAR AFTER STORE OPENING.

2. RESTROOMS AND OFFICES: ALL LIGHTING IN THESE AREAS ARE CONTROLLED BY OCCUPANT-SENSING DEVICES.



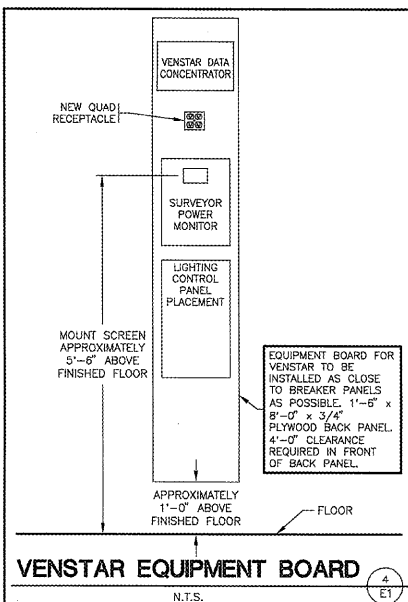
**VENSTAR ENLARGED VIEW OF LCP**

**LIGHTING - KEYNOTES**

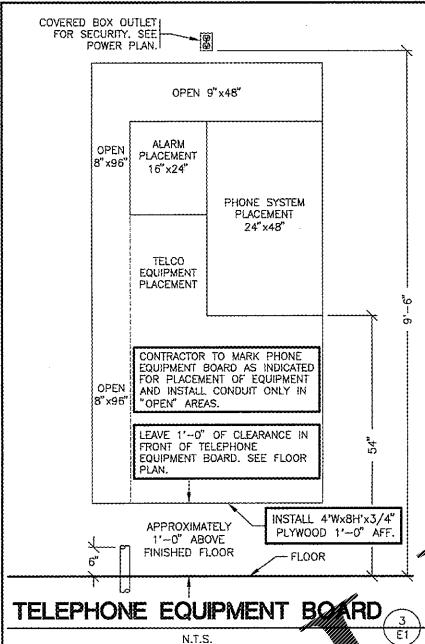
- MOUNT J-BOX INSIDE BUILDING & FLEX CONDUIT THRU WALL FOR POWER SUPPLY TO ILLUMINATED SIGN. EXACT LOCATIONS OF PENETRATIONS SHALL BE COORDINATED WITH SIGN COMPANY. PENETRATIONS SHALL BE BEHIND SIGNAGE. WATERPROOF W/ ELASTOMERIC POLYURETHANE (NO EXCEPTIONS) EQUAL TO "VULKEX" 118. TYPICAL.
- TO "OPEN" SIGN, SEE SHEET E2.
- VIA PANEL "E" POSITION D.
- VIA VENSTAR SURVEYOR / LIGHTING CONTROL PANEL. SEE SHEET VS1 & VENSTAR SCOPE OF WORK (S.O.W.)
- MOUNT 8'-0" A.F.F. TO BACK OF UNDER WALL. THESE FIXTURES ONLY.
- SUSPEND 8'-0" A.F.F. THIS FIXTURE ONLY.
- ROUTE THE OFFICE AND RESTROOMS LIGHTING CIRCUIT THRU THE LOCAL OCCUPANT-SENSORS AND DIRECTLY TO THE CIRCUIT BREAKER. THESE FIXTURES SHALL NOT BE SWITCHED BY THE LIGHTING CONTROL PANEL.
- REFER TO ARCHITECTURAL ELEVATION SHEETS SHOWING DIMENSIONS AND LOCATIONS. TYPICAL ALL WALLPACKS.
- APPROXIMATE LOCATION OF SMOKE DETECTOR PER VS1 SHEET. TYP.
- NIGHT LIGHT FIXTURE TO BE AS CLOSE AS POSSIBLE BUT NOT OVER THE OVERHEAD DOOR WHEN OPEN.
- DIMMER SWITCHES 1 THROUGH 6 LOCATED ON WALL OF OFFICE 102 AREA. REFER TO 1/E4, 2/E4 AND 3/E4.
- DIMMER LIGHTING CONTROL POWER PACKS LOCATED AT STRUCTURE. SEE DETAILS ON E4 FOR MORE INFO.

| LIGHT FIXTURE SCHEDULE   |   |  |         |             |                       |               |             |     |                     |  |         |   |  |
|--|---|--|---------|-------------|-----------------------|---------------|-------------|-----|---------------------|--|---------|---|--|
| ALL ITEMS LISTED ON THE "LIGHT FIXTURE SCHEDULE" WILL BE SUPPLIED BY THE OWNER (O'REILLY). ITEMS SHALL BE DIRECT ORDERED AND OR RELEASED FROM THE LISTED ELECTRICAL EQUIPMENT DISTRIBUTOR: |   |  |         |             |                       |               |             |     |                     |  |         |   |  |
| MARK   | MFR.  | CATALOG NUMBER                         | VOLTAGE | FINISH      | LAY-IN RECEILING WALL | RECESSED WALL | FLUORESCENT | LED | OTHER LAMP QUANTITY | (General Electric) LAMP CATALOG NUMBER/TYP | WATTAGE | DESCRIPTION OF ACCESSORIES  | NOTES  |
| <b>LED DIMMABLE LIGHTS</b>   |   |  |         |             |                       |               |             |     |                     |  |         |   |  |
| A  | LSI   | SDL 8 LED 78 40 UE OR NO SUBSTITUTIONS | 120     | WHITE       |                       | X             |             | X   |                     | ---  | 67      | GRID HANGER (555913) (CEILING GRID ONLY). 0-10 VOLT DIMMING DRIVER STANDARD.  |  |
| B  | LSI   | SDL 4 LED 39 40 UE OR NO SUBSTITUTIONS | 120     | WHITE       |                       | X             |             | X   |                     | ---  | 34      | GRID HANGER (555913) (CEILING GRID ONLY). 0-10 VOLT DIMMING DRIVER STANDARD.  |  |
| C  | LSI   | SDL 8 LED 78 40 UE OR NO SUBSTITUTIONS | 120     | WHITE       |                       |               | X           | X   |                     | ---  | 67      | 3' CHAIN HANGING KIT (1 PER FIXTURE) CHAIN HANGER @ 12" A.F.F. + 3' CHAIN HANGING KIT (CHS 3FT). 0-10 VOLT DIMMING DRIVER STANDARD. |  |
| D  | LSI   | SDL 4 LED 39 40 UE OR NO SUBSTITUTIONS | 120     | WHITE       |                       |               | X           | X   |                     | ---  | 34      | 3' CHAIN HANGING KIT (1 PER FIXTURE) CHAIN HANGER @ 12" A.F.F. + 3' CHAIN HANGING KIT (CHS 3FT). 0-10 VOLT DIMMING DRIVER STANDARD. |  |
| <b>COMBINATION EXIT/EMERGENCY LIGHTS, EMERGENCY LIGHTS &amp; EXTERIOR EMERGENCY REMOTE HEADS</b>   |   |  |         |             |                       |               |             |     |                     |  |         |   |  |
| XR   | COOPER  | APCH (RETRACTABLE LETTERS)             | 120     | WHITE       |                       | X             | X           |     | 2                   | LED EXIT + (2) 3.6V                        | 2.34    | UNIVERSAL (WALL/CLG.) SINGLE FACE DOUBLE FACE   | BACKUP BATTERIES SHALL MAINTAIN 100% ILLUMINATION FOR A MINIMUM OF 90 MINUTES TO COMPLY WITH ARTICLE 700.12(A) OF THE N.E.C. |
|  | COOPER  | APEL                                   | 120     | WHITE       |                       | X             | X           |     | 2                   | 3.6V                                       | 0.33    | UNIVERSAL (WALL/CLG.)   | BACKUP BATTERIES SHALL MAINTAIN 100% ILLUMINATION FOR A MINIMUM OF 90 MINUTES TO COMPLY WITH ARTICLE 700.12(A) OF THE N.E.C. |
| RH2  | COOPER  | APWR2                                  | 3.6V DC | WHITE       |                       | X             |             | X   | 2                   | LED REMOTE HEAD                            | 0       | ---   | POWERED BY EMERGENCY "XR" FIXTURE.   |
| <b>EXTERIOR LIGHTS</b>   |   |  |         |             |                       |               |             |     |                     |  |         |   |  |
| C  | INTERMATIC  | PHOTOCCELL - #K4251                    | 120     | DARK BRONZE |                       |               |             |     |                     | ---  | ---     | ---   | MOUNT ABOVE WALL PACK LOCATED NEAR FREIGHT DOOR.   |
| L  | LSI   | LAD6 41 LED 40 75 UE TR6R SFHAZ        | 120     | CLEAR       | X                     |               |             | X   | 1                   | ---  | 45      | ---   | RECESSED CAN.  |
| WP1  | SEE "SP1" SHEET FOR EXTERIOR LIGHTING WALLPACK FIXTURE SCHEDULE   |  |         |             |                       |               |             |     |                     |  |         |   |  |
| PX   | SEE "SP1" SHEET FOR EXTERIOR LIGHTING POLE LIGHT FIXTURE SCHEDULE |  |         |             |                       |               |             |     |                     |  |         |   |  |

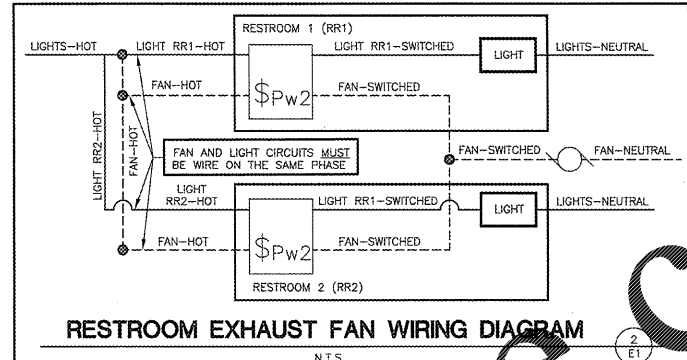
**FIXTURE QUANTITY TO BE VERIFIED WITH LIGHTING PLAN QUANTITY**



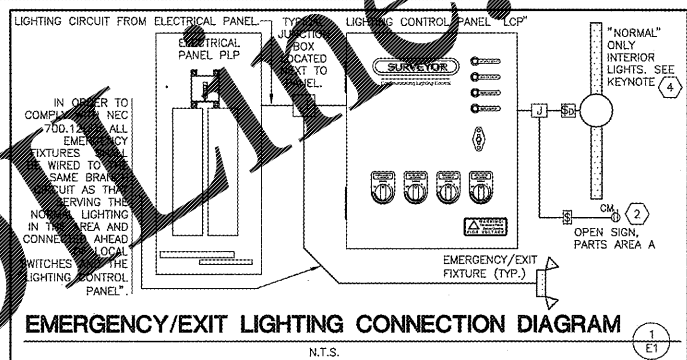
**VENSTAR EQUIPMENT BOARD**



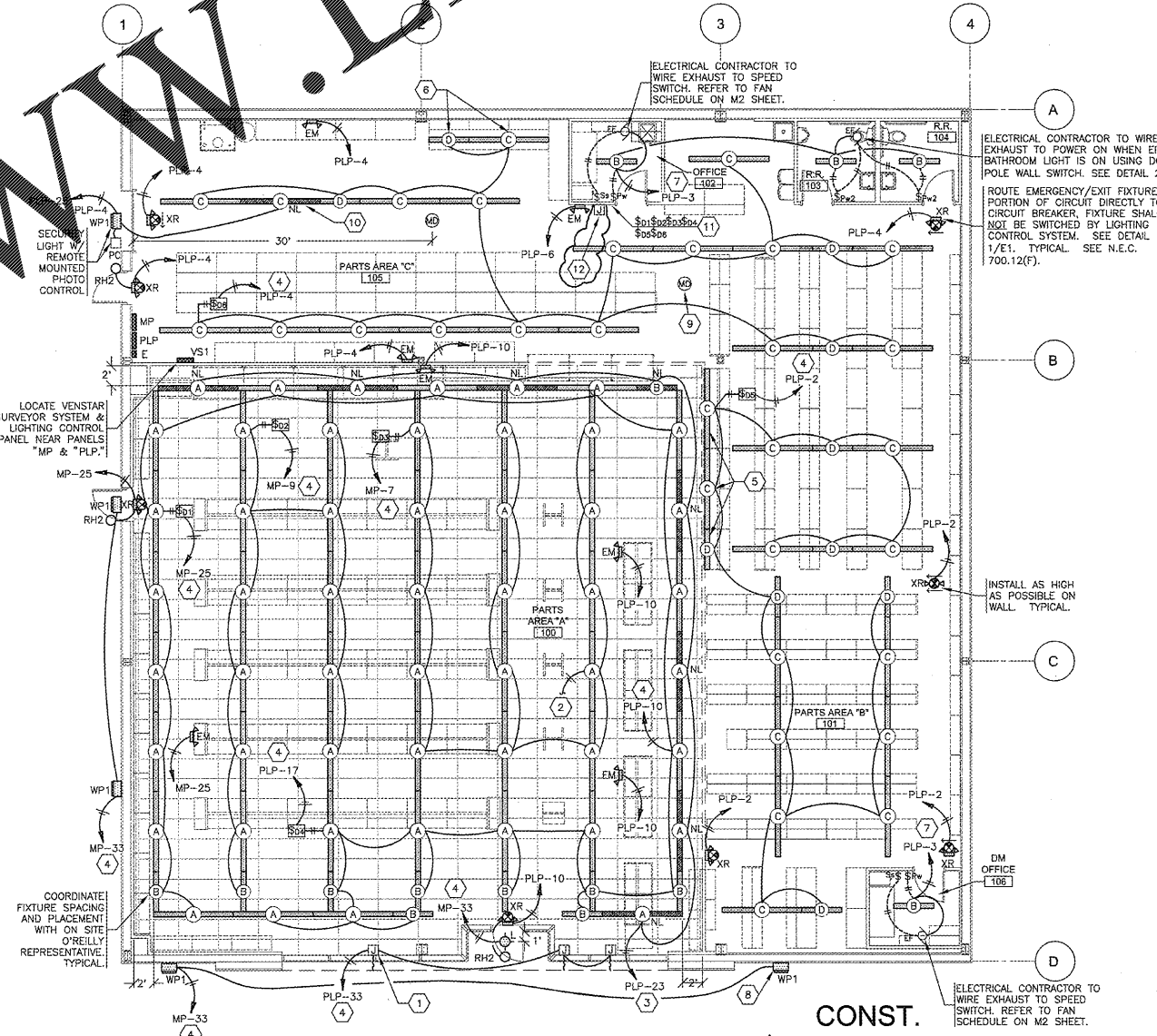
**TELEPHONE EQUIPMENT BOARD**



**RESTROOM EXHAUST FAN WIRING DIAGRAM**



**EMERGENCY/EXIT LIGHTING CONNECTION DIAGRAM**



**LIGHTING PLAN**

SCALE: 1/8" = 1'-0"



ELECTRICAL CONTRACTOR TO WIRE EXHAUST TO POWER ON WHEN EITHER BATHROOM LIGHT IS ON USING DOUBLE POLE WALL SWITCH. SEE DETAIL 2/E1.

ROUTE EMERGENCY/EXIT FIXTURE PORTION OF CIRCUIT DIRECTLY TO CIRCUIT BREAKER. FIXTURE SHALL NOT BE SWITCHED BY LIGHTING CONTROL SYSTEM. SEE DETAIL 1/E1. TYPICAL. SEE N.E.C. 700.12(F).

INSTALL AS HIGH AS POSSIBLE ON WALL. TYPICAL.

ELECTRICAL CONTRACTOR TO WIRE EXHAUST TO SPEED SWITCH. REFER TO FAN SCHEDULE ON M2 SHEET.

COORDINATE FIXTURE SPACINGS AND PLACEMENT WITH ON SITE O'REILLY REPRESENTATIVE. TYPICAL.

**CRAIG A. SCHNEIDER, AIA**  
ARCHITECT  
1736 East Sunshine, Suite 417  
Springfield, Missouri 65804  
417.862.0558  
417.862.2265  
architect@esteryschneider.com  
craig@esteryschneider.com

PROJECT: **NEW O'REILLY AUTO PARTS STORE**  
EAST MAIN STREET  
FREEPORT, FL  
**LIGHTING PLAN**

**O'Reilly AUTO PARTS**  
CORPORATE OFFICES  
233 SOUTH PATTERSON  
SPRINGFIELD, MISSOURI 65802  
(417) 862-2674 TELEPHONE

COMM # 3924  
DATE: 4-11-17  
REVISION DATE: 8-21-17  
DATE: 6-11-18