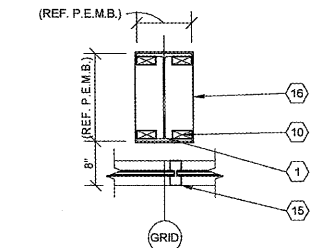
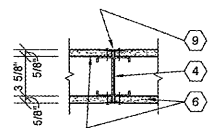


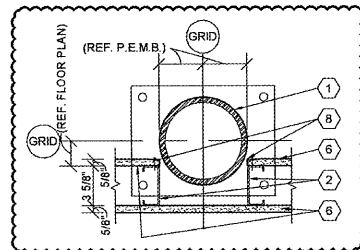
Order Plans



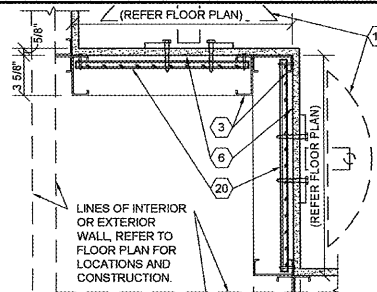
**1 COLUMN DETAIL**  
A4.2 SCALE: 3/4" = 1'-0"



**2 GYPSUM BOARD C.J. DETAIL**  
A4.2 SCALE: 1 1/2" = 1'-0"



**3 COLUMN DETAIL**  
A4.2 SCALE: 1 1/2" = 1'-0"



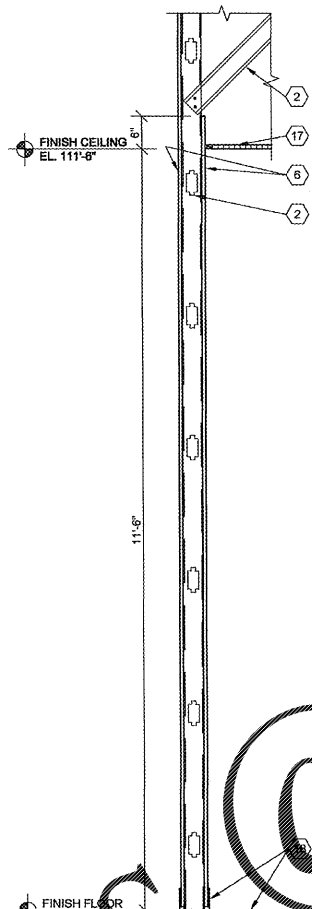
**4 FRAMING DETAIL**  
A4.2 SCALE: 1 1/2" = 1'-0"

**GENERAL NOTES**

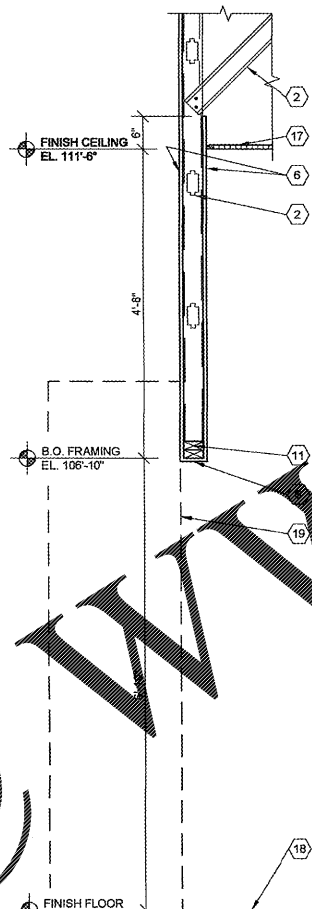
- (A) REFER TO PROJECT MANUAL FOR ADDITIONAL REQUIREMENTS.
- (B) DIMENSIONS ARE TO ROUGH FACE OF CONCRETE, MASONRY, FRAMING, OR CENTER LINE OF STRUCTURE UNLESS OTHERWISE INDICATED.
- (C) REFER TO INTERIOR FINISH SCHEDULES FOR MATERIAL TYPES, COLORS AND FINISHES.

**KEY NOTES**

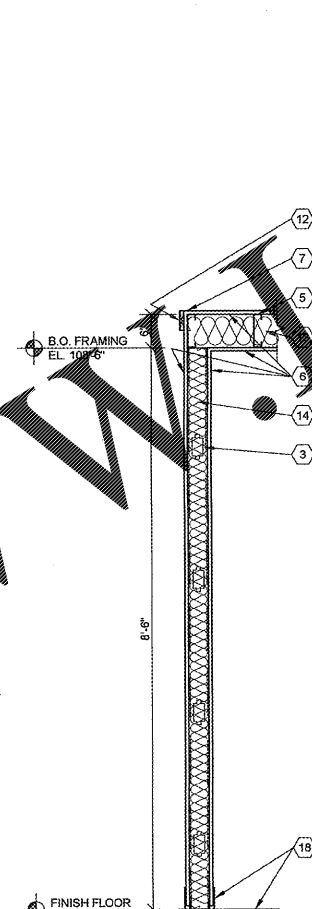
- (1) PRE-ENGINEERED METAL BUILDING STRUCTURAL STEEL COLUMN. REFER TO SHOP DRAWINGS FOR ADDITIONAL REQUIREMENTS AND PAINT (WHERE INDICATED).
- (2) 3/8" RIGID FORM METAL FRAMING ATTACHED TO ROOF STRUCTURE. REFER TO STRUCTURAL DRAWINGS FOR FRAMING REQUIREMENTS.
- (3) 18" (20 GA.) COLD FORM METAL FRAMING AT 24" O.C., REFER TO INTERIOR WALL TYPES FOR ADDITIONAL REQUIREMENTS.
- (4) 3/8" RIGID FORM METAL STUDS DOUBLED AT CONTROL JOINT.
- (5) 6" (20 GA.) COLD FORM METAL JOIST FRAMING AT 24" O.C.
- (6) 5/8" TYPE "X" GYPSUM BOARD. REFER TO INTERIOR WALL TYPES AND FOR ADDITIONAL REQUIREMENTS.
- (7) GYPSUM BOARD CORNER BEAD CONTINUOUS.
- (8) GYPSUM BOARD "J" MOLDING CONTINUOUS.
- (9) GYPSUM BOARD CONTINUOUS ONE PIECE VEE-SHAPED SLOT CONTROL JOINT (1/4" X 7/16") AT BOTH SIDES OF WALL.
- (10) FIRE TREATED 2X NAILERS OR BLOCKING.
- (11) (2) FIRE TREATED 2X NAILERS.
- (12) 1X4 WOOD TRIM (PAINT GRADE PINE) ATTACHED TO METAL STUD FRAMING WITH TECH 12 SCREWS AT 24" O.C. SET FLUSH. PAINT EXPOSED SURFACES TO MATCH WALL FINISH.
- (13) 6" UNFACED SOUND BATT INSULATION.
- (14) 3 1/2" UNFACED SOUND BATT INSULATION.
- (15) ALUMINUM WINDOW SYSTEM. REFER TO FLOOR PLAN AND WINDOW SCHEDULE FOR TYPES.
- (16) PRE-FINISHED SHEET METAL (24 GA.) COLUMN ENCLOSURE TO EXTEND THRU FINISH CEILING SYSTEM. COLOR TO MATCH WINDOW FRAMING FINISH. NO EXPOSED HORIZONTAL SEAMS PERMITTED.
- (17) SUSPENDED ACOUSTICAL CEILING SYSTEM, REFER TO INTERIOR FINISH SCHEDULE FOR TYPES AND LOCATIONS.
- (18) FINISH FLOORING AND BASE, REFER TO INTERIOR FINISH SCHEDULE FOR TYPES AND LOCATIONS.
- (19) OWNER FURNISHED AND INSTALLED FIXTURE, REFER TO INTERIOR FINISH PLAN FOR LAYOUT. (REFER TO SCOPE OF WORK SCHEDULE.)
- (20) 5/8" FIRE TREATED PLYWOOD BACKING TO BACK SIDE OF STUD INTERIOR FLANGE ON EACH EXPOSED WALL FACE FROM 8'-0" TO 10'-0" A.F.F. FOR INSTALLATION OF SECURITY MIRRORS (OWNER FURNISHED AND INSTALLED).



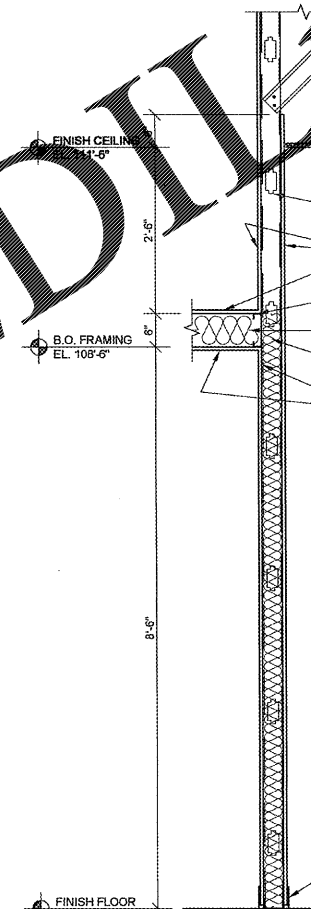
**5 INTERIOR WALL SECTION**  
A4.2 SCALE: 3/4" = 1'-0"



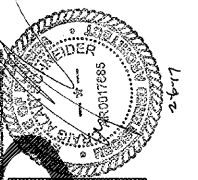
**6 INTERIOR WALL SECTION**  
A4.2 SCALE: 3/4" = 1'-0"



**7 INTERIOR WALL SECTION**  
A4.2 SCALE: 3/4" = 1'-0"



**8 INTERIOR WALL SECTION**  
A4.2 SCALE: 3/4" = 1'-0"



**CRAIG A. SCHNEIDER, AIA**  
ARCHITECT  
1736 East Sunshine, Suite 417  
Springfield, Missouri 65804  
417.882.0066  
417.882.3285  
e-mail: architect@esterfschneider.com

PROJECT:  
**NEW O'REILLY AUTO PARTS STORE**  
**EAST MAIN STREET**  
**FREEMONT, FL**  
**INTERIOR SECTIONS & DETAILS**

**O'Reilly AUTO PARTS**  
CORPORATE OFFICES  
233 SOUTH MAIN  
SPRINGFIELD, MISSOURI 65802  
(417) 882-2674 TELEPHONE

COMM #	3924
DATE:	9-16-16
REVISION	
DATE:	2-6-17