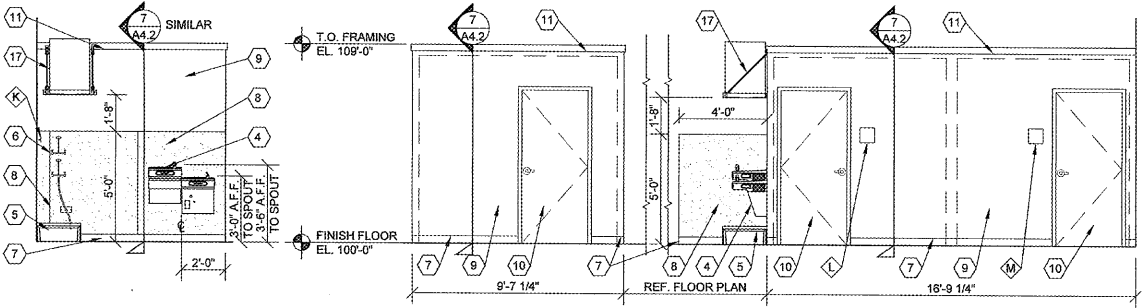


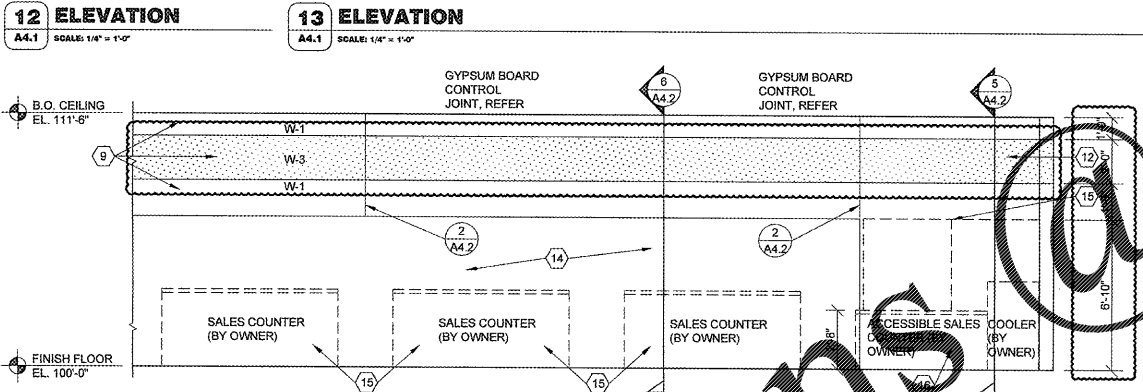
NOTE: REFER TO OVERALL FLOOR PLAN FOR RESTROOM ORIENTATION AND LAYOUT OF ADJACENT WALLS.

SPECIAL NOTE: REFER TO PRE-ENGINEERED METAL BUILDING SHOP DRAWINGS FOR LOCATIONS OF INDEPENDENT STRUCTURAL VERTICAL LATERAL BRACING SYSTEMS AND NOTIFY OWNER'S REPRESENTATIVE AND ARCHITECT IF BRACING OCCURS ADJACENT TO RESTROOM PERIMETER WALLS. ENTIRE RESTROOM LAYOUT TO SHIFT 6" AWAY FROM BRACING WALL(S) TO CONCEAL STRUCTURE.



GRAB BAR SUPPORT BAR FASTENER & MOUNTING SUPPORT SHALL BE ABLE TO WITHSTAND 250LBS. IN BENDING, SHEAR & TENSION.

ALL EXPOSED PIPING TO BE COVERED W/ INSULATION.



GENERAL NOTES

- A REFER TO PROJECT MANUAL FOR ADDITIONAL REQUIREMENTS.
- B LAYOUT DIMENSIONS OF PLUMBING FIXTURES AND ACCESSORIES TO FACE OF GYPSUM BOARD OR CENTER LINE OF FIXTURE. LAYOUT DIMENSIONS OF WALLS AND CEILINGS TO ROUGH FACE OF FRAMING, MASONRY, OR CENTER LINE OF STRUCTURE. ALL GYPSUM BOARD 5/8" THICK UNLESS OTHERWISE INDICATED AND DIMENSIONS NOT SHOWN FOR CLARITY.
- C REFER TO PLUMBING DRAWINGS FOR FIXTURE TYPES AND ADDITIONAL REQUIREMENTS. PROVIDE ADDITIONAL COLD FORM METAL FRAMING OR FIRE TREATED BLOCKING AS REQUIRED FOR PROPER SUPPORT.
- D REFER TO INTERIOR FINISH SCHEDULES FOR MATERIAL FINISH TYPES AND LOCATIONS.
- E ALL EXPOSED PIPING BELOW SINKS TO BE COVERED WITH INSULATION.

KEY NOTES

- 6 EYE WASH STATION. INSTALL WITH TOP AT 48" ABOVE FINISH FLOOR.
- 7 BASE, REFER TO FINISH SCHEDULE.
- 8 SANITARY WALL PANEL SYSTEM, REFER TO FINISH SCHEDULE. PROVIDE TRIM AND EDGE MOLDING AROUND PERIMETER. ATTACH TO SUBSTRATE AS REQUIRED.
- 9 PAINT, REFER TO FINISH SCHEDULE.
- 10 DOOR, REFER TO DOOR AND FINISH SCHEDULES.
- 11 WOOD TRIM, PAINT.
- 12 WALL CONSTRUCTION, REFER TO FLOOR PLAN FOR TYPES.
- 13 TREATED 2X WALL BLOCKING.
- 14 WALL OPENING TO BEYOND, REFER TO FLOOR PLAN.
- 15 OWNER FURNISHED AND INSTALLED FURNISHING, CHAIRING, OR FIXTURE. FOR REFERENCE ONLY (N.I.C.)
- 16 OWNER SUPPLIED AND INSTALLED ACCESSIBLE CUSTOMER SERVICE COUNTER TO COMPLY WITH ACCESSIBILITY REQUIREMENTS. FOR REFERENCE ONLY (N.I.C.)
- 17 WALL MOUNTED WATER HEATER AND SUPPORT PLATFORM, REFER TO PLUMBING DRAWINGS. PROVIDE FIRE TREATED BLOCKING OR ADDITIONAL COLD FORM FRAMING AS REQUIRED FOR INSTALLATION.

KEY NOTES

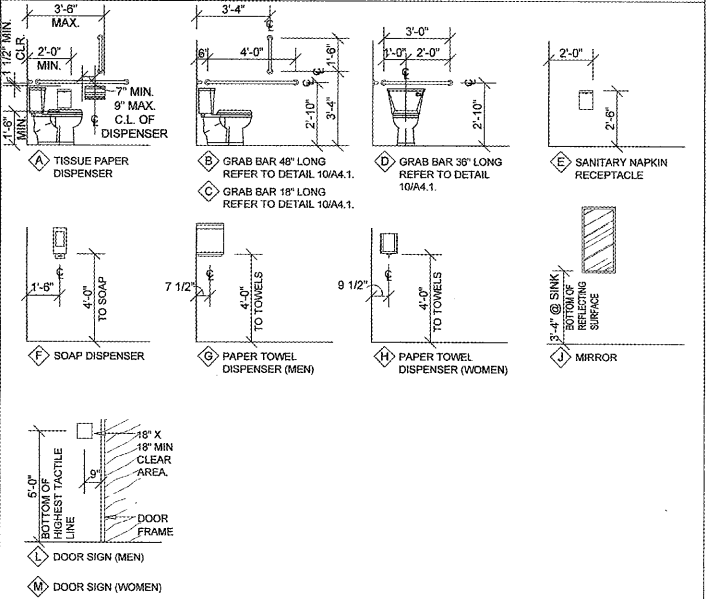
- 1 WATER TAPET, ACCESSIBLE FIXTURE HEIGHT TO TOP OF SEAT 17" MINIMUM AND 19" MAXIMUM A.F.F. ACCESSIBLE FIXTURE FLUSH CONTROLS TO BE ON WIDE SIDE OF TOILET.
- 2 HUNG LAVATORY
- 3 WALL MOUNT URINAL. MOUNT RIM 1'-5" MAXIMUM ABOVE FINISH FLOOR.
- 4 HIGH / LOW DRINKING FOUNTAIN WITH CANE GUARD.
- 5 FLOOR MOUNTED MOP BASIN.

ACCESSORY SCHEDULE

MK	DESCRIPTION	MANUFACTURER	SERIES / MODEL	MOUNTING LOCATION	ACCESSORY NOTES
A	TISSUE PAPER DISPENSER	GEORGIA PACIFIC	COMPACT 66783	REFER PLANS, ELEVATIONS, LEGEND	NOTE 2
B	GRAB BAR	BOBRICK	B6806 x 48"	REFER PLANS, ELEVATIONS, LEGEND	
C	GRAB BAR	BOBRICK	B6806 x 18"	REFER PLANS, ELEVATIONS, LEGEND	
D	GRAB BAR	BOBRICK	B6806 x 36"	REFER PLANS, ELEVATIONS, LEGEND	
E	SANITARY NAPKIN RECEPTACLE	BOBRICK	B-270	REFER PLANS, ELEVATIONS, LEGEND	WOMEN'S RESTROOM ONLY
F	SOAP DISPENSER	GOJO	PRO 2000	REFER PLANS, ELEVATIONS, LEGEND	NOTE 2
G	PAPER TOWEL DISPENSER (MEN)	GEORGIA PACIFIC	69490A	REFER PLANS, ELEVATIONS, LEGEND	NOTE 2
H	PAPER TOWEL DISPENSER (WOMEN)	GEORGIA PACIFIC	69490A	REFER PLANS, ELEVATIONS, LEGEND	NOTE 2
J	MIRROR	BOBRICK	B-165-1636 18" W X 36" H	REFER PLANS, ELEVATIONS, LEGEND	
K	MOP HANGER	REFER TO PLUMBING DRAWINGS	REFER TO PLUMBING DRAWINGS	54" A.F.F. TO CENTER	REFER TO PLUMBING DRAWINGS
L	DOOR SIGN (MEN)	ROCKWOOD	BF887	REFER PLANS, ELEVATIONS, LEGEND	WHITE TEXT ON BLACK BACKGROUND
M	DOOR SIGN (WOMEN)	ROCKWOOD	BF888	REFER PLANS, ELEVATIONS, LEGEND	WHITE TEXT ON BLACK BACKGROUND

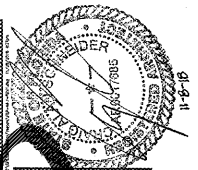
ACCESSORY GENERAL NOTES:
 1. CONTRACTOR TO PROVIDE FIRE TREATED WOOD BLOCKING FOR INSTALLATION OF TOILET ACCESSORIES, INCLUDING OWNER FURNISHED AND CONTRACTOR INSTALLED ACCESSORIES. COORDINATE REQUIREMENTS WITH OWNER.
 2. ACCESSORY OWNER FURNISHED AND CONTRACTOR INSTALLED. REFER TO SCOPE OF WORK SCHEDULE FOR ADDITIONAL REQUIREMENTS.

ACCESSORY MOUNTING LEGEND



Order Plans @

WWW.LDMLINE.COM



CRAIG A. SCHNEIDER, AIA
 ARCHITECT
 1736 East Sunshine, Suite 417
 Springfield, Missouri 65804
 417.862.0586
 Fax: 417.862.3265
 e-mail: architect@estertechneer.com

PROJECT: **NEW O'REILLY AUTO PARTS STORE**
EAST MAIN STREET
FREEMONT, FL
INTERIOR ELEVATIONS

O'Reilly AUTO PARTS
 CORPORATE OFFICES
 233 SOUTH PATTERSON
 SPRINGFIELD, MISSOURI 65802
 (417) 862-2674 TELEPHONE

COMM # 3924
 DATE: 9-16-16
 REVISION DATE: 2-6-17
 11-8-18