



CRAIG A. SCHNEIDER, AIA
ARCHITECT
 1736 East Sunshine, Suite 417
 Springfield, Missouri 65804
 417.862.0586
 Fax: 417.862.3265
 e-mail: architect@esteryschneider.com

PROJECT:
NEW O'REILLY AUTO PARTS STORE
EAST MAIN STREET
FREEMONT, MO
LANDSCAPE IRRIGATION PLAN

O'Reilly AUTO PARTS
 CORPORATE OFFICES
 233 SOUTH PATTERSON
 SPRINGFIELD, MISSOURI 65802
 (417) 862-2674 TELEPHONE

| | |
|----------------|---------|
| COMM # | 3924 |
| DATE: | 9-16-16 |
| REVISION DATE: | 2-6-17 |
| | 2-8-18 |

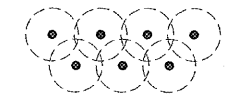
L2.1

GENERAL NOTES

- (A) REFER TO PROJECT MANUAL FOR ADDITIONAL REQUIREMENTS.
- (B) REFER TO CIVIL AND SITE UTILITY DRAWINGS FOR ADDITIONAL REQUIREMENTS. COORDINATE WORK WITH OTHER SITE RELATED DEVELOPMENT DRAWINGS.
- (C) PRIOR TO INSTALLATION, GENERAL CONTRACTOR TO CONFIRM THAT LIGHT POLES, LANDSCAPING AND UTILITIES DO NOT CONFLICT WITH SIGN LOCATION SHOWN. IF ANY POTENTIAL CONFLICT IS DISCOVERED, GENERAL CONTRACTOR IS TO CONTACT OWNER'S REPRESENTATIVE BEFORE PROCEEDING WITH THE WORK.
- (D) IRRIGATION SYSTEM TO BE DESIGNED BY CONTRACTOR FOR SHOWN COVERAGE AREAS INDICATED. CONTRACTOR SHALL BE RESPONSIBLE FOR PROVIDING COMPLETE AND WORKING IRRIGATION SYSTEM IN ACCORDANCE WITH GOVERNING CODES, ORDINANCES, AND AUTHORITIES. OBTAINING JURISDICTION, SUBMIT SHOP DRAWINGS FOR REVIEW AND APPROVAL AS SPECIFIED.
- (E) VERIFY MINIMUM STATIC WATER PRESSURE IS AVAILABLE AT THE PROJECT SITE PRIOR TO DESIGN AND BEGINNING CONSTRUCTION.
- (F) COORDINATE IRRIGATION SYSTEM WITH LANDSCAPING AND PLANTING REFER TO LANDSCAPE PLAN. WHEN TRENCHING AVOID TREE ROOTS AND INSTALL HEADS AT APPROPRIATE LOCATIONS.
- (G) ADJUST NOZZLES TO AVOID OVERTHROW ON SIDEWALKS, PAVING, WALLS, ROADWAYS, AND BEYOND PROPERTY LINES, UNLESS OTHERWISE INDICATED. THROTTLE ALL IRRIGATION CONTROL VALVES AS REQUIRED TO PREVENT FOGGING. ADJUST ARC AND RADIUS OF REQUIRED SPRINKLERS AS NEEDED.
- (H) SET CONTROLLER RUN TIMES TO MATCH PLANT WATER NEEDS AND SOIL CONDITIONS.
- (I) INSTALL RISERS 18" FROM WALLS AND A MINIMUM OF 12" FROM ANY SIDEWALK OR ROAD.
- (J) TOP OF SPRAY AND ROTOR HEADS SHALL BE SET AT TOP OF SOD OR TOP OF MULCH LAYERS.
- (L) PROVIDE RAIN SENSOR AND ANTI-FREEZE ASSEMBLY ON IRRIGATION SYSTEM.
- (M) THE CONTRACTOR IS FULLY RESPONSIBLE FOR THE WORK UNTIL OWNER GIVES FINAL ACCEPTANCE.
- (N) ALL CIRCUIT PIPE IS TO BE CLASS 160 PVC OR HIGHER GRADE.
- (O) ALL MAIN FITTINGS SHALL BE REINFORCED WITH 2000 PSI POURED CONCRETE THRUST BLOCKS.

COVERAGE REQUIREMENTS

IRRIGATION HEAD SHALL BE PLACED TO PROVIDE 100% OVERLAP HEAD-TO-HEAD COVERAGE.



KEY NOTES

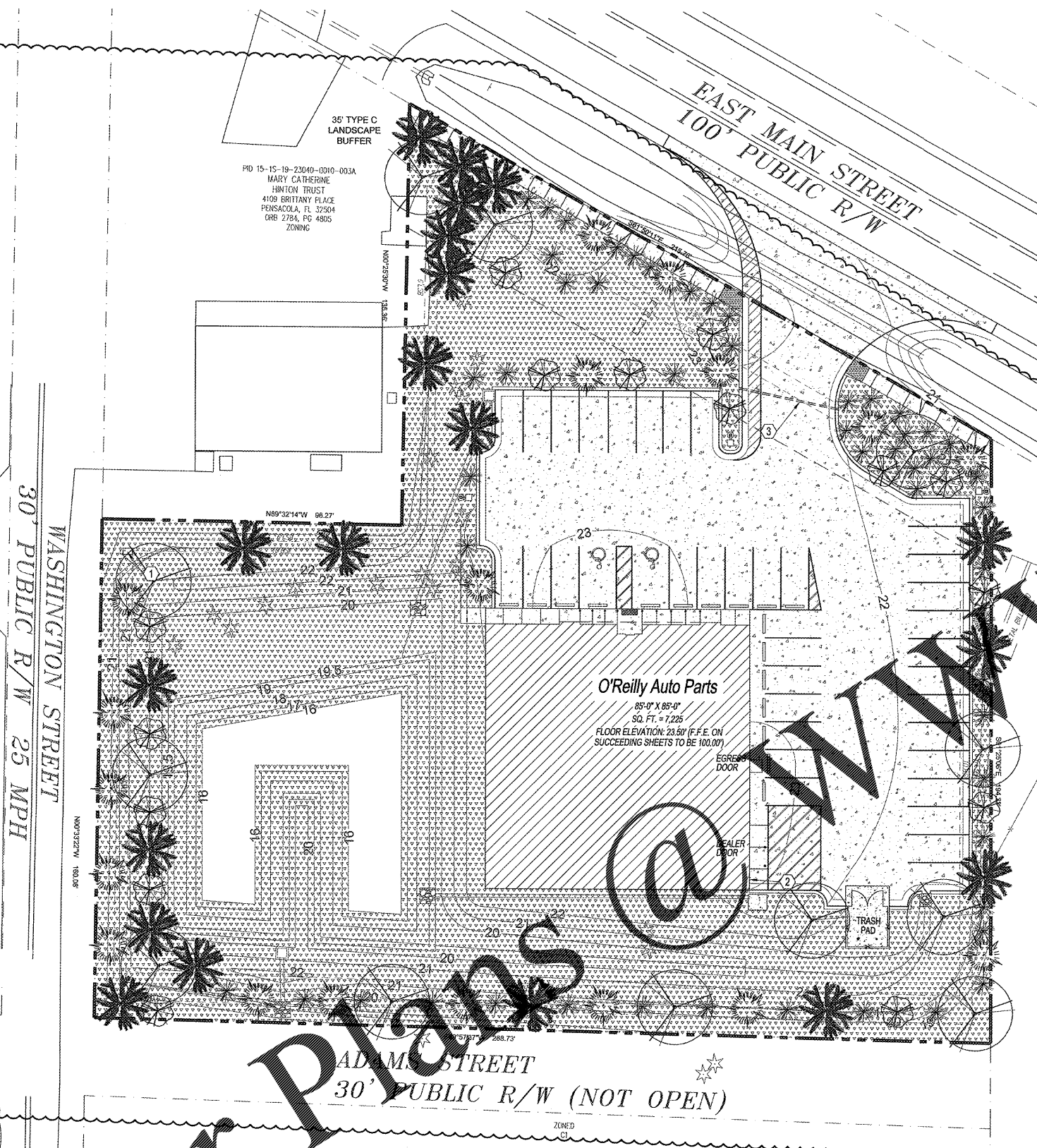
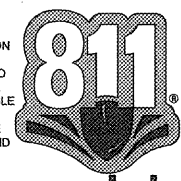
- 1 APPROXIMATE LOCATION OF LAWN IRRIGATION METER WITH BACK FLOW PREVENTION PER CITY REQUIREMENTS. REFER TO UTILITIES SITE PLAN.
- 2 IRRIGATION CONTROLLER LOCATION INSIDE OF BUILDING. PROVIDE FREEZE SENSOR AND RAIN SENSOR ON OUTSIDE OF BUILDING.
- 3 4" DIAMETER SCHEDULE 40 PVC SLEEVES UNDER PAVEMENT FOR ROUTING OF IRRIGATION SYSTEM. PROVIDE END CAPS AND PULL WIRE.

SYMBOLS LEGEND

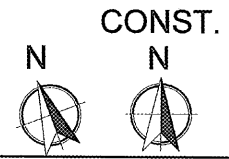
NOTE: REFER TO SURVEY SHEET FOR SYMBOLS LEGEND OF EXISTING CONDITIONS.

- NEW AREA OF IRRIGATION SYSTEM COVERAGE
- SHRUB PLANTING
- UNDER STORY TREE
- CANOPY TREE

CAUTION:
 INFORMATION ON THIS DRAWING CONCERNING TYPE AND LOCATION OF UNDERGROUND AND OTHER UTILITIES IS NOT GUARANTEED TO BE ACCURATE OR ALL INCLUSIVE. THE CONTRACTOR IS RESPONSIBLE FOR MAKING HIS OWN DETERMINATION AS TO THE TYPE AND LOCATION OF UNDERGROUND AND OTHER UTILITIES AS MAY BE NECESSARY TO AVOID DAMAGE THERETO.



1 LANDSCAPE IRRIGATION PLAN
 L2.1 SCALE: 1" = 20'-0"



Order Plans

EsterySchneider.com