

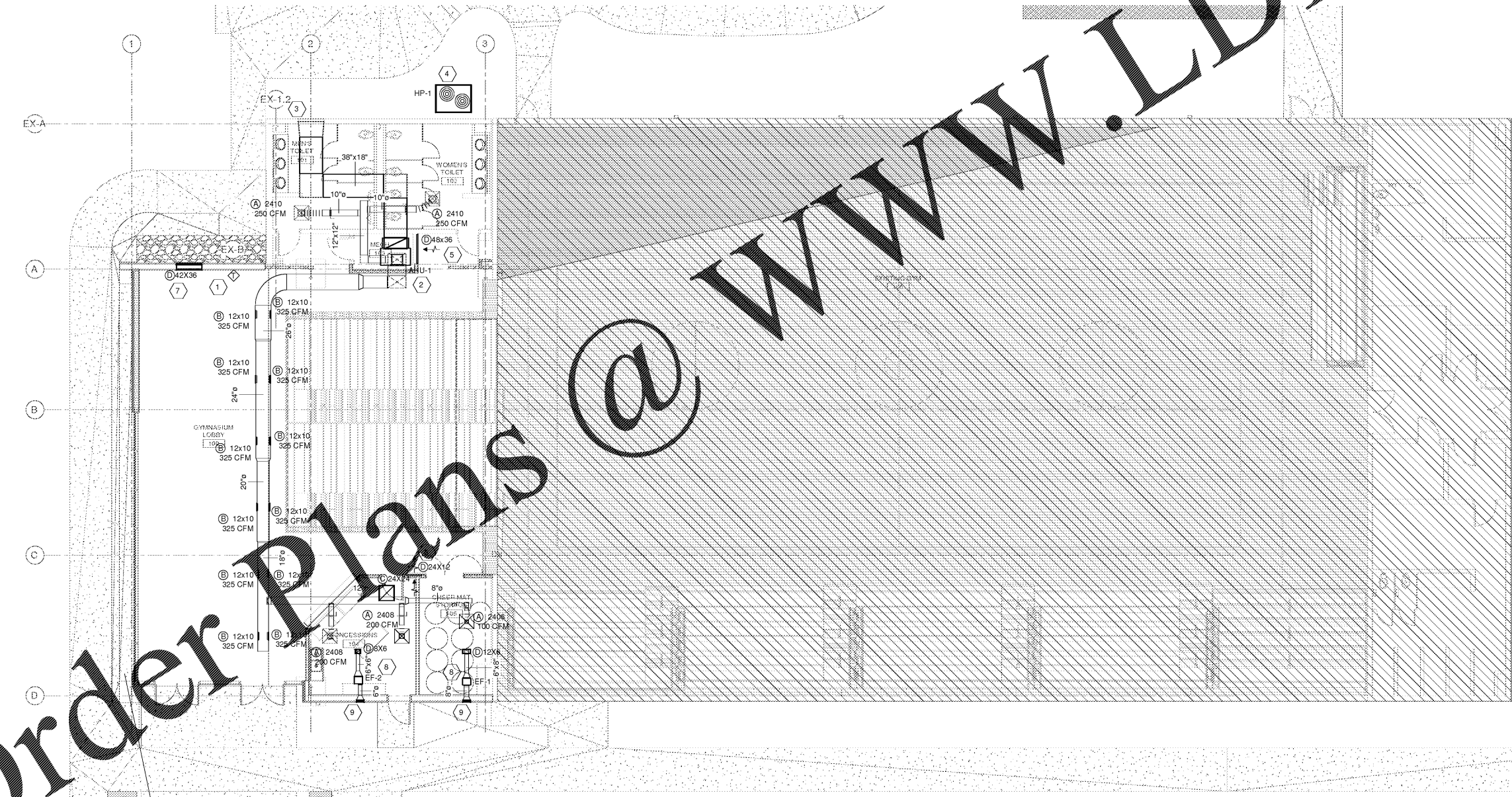
HVAC SHEET NOTES - UNREFERENCED

- FOR GENERAL HVAC NOTES SEE COVER SHEET. IN CASE OF CONFLICTING NOTES THE MOST STRINGENT OF THE TWO SHALL APPLY PER APPLICABLE JOB CODE.
- ROUND DUCT RUNOUTS TO INDIVIDUAL DIFFUSERS TO BE SAME SIZE AS DIFFUSER NECK UNLESS NOTED.
- CONTRACTOR SHALL COORDINATE ALL DUCTWORK AND PIPE ROUTING WITH BUILDING STRUCTURE AND OTHER TRADES PRIOR TO FABRICATION.
- MAINTAIN 10 FT. (MIN.) SEPARATION BETWEEN THE OUTSIDE AIR INTAKES AND EXHAUST OR VENT OPENINGS.
- EXTEND FULL SIZE CONDENSATE DRAIN LINE FROM EACH A/C UNIT AND TERMINATE AT FLOOR DRAIN, ROOF DRAIN, FRENCH DRAIN, OR OTHER TERMINATION POINTS AS DIRECTED. TRAP AND VENT LINE AT CONNECTION TO COIL.
- ALL SPIRAL DUCTWORK TO BE DOUBLE WALLED.

HVAC SHEET NOTES - REFERENCED

- COORDINATE FINAL THERMOSTAT LOCATION WITH OWNER/ARCHITECT. MOUNT THERMOSTAT 60" AFF.
- FLOOR MOUNTED VERTICAL A/C UNIT
 - MOUNT A/C UNIT LEVEL ON GYMNASIUM SLAB AND CONFIGURE FOR HORIZONTAL RETURN.
 - INSTALL RETURN AIR ECONOMIZER WITH OUTSIDE AIR CONNECTION.
 - PROVIDE REINFORCED FLEXIBLE DUCT AT SUPPLY AND RETURN CONNECTION POINTS.
 - ROUTE CONDENSATE DRAIN LINE TO FLOOR DRAIN IN HVAC ROOM. SLOPE LINE 1/8" PER 1'-0" AWAY FROM COIL.
 - CONFIGURE UNIT IN SPACE TO ALLOW MFG SERVICE CLEARANCES & FILTER ACCESS.
 - INSTALL FIRE/SMOKE DETECTORS IN SUPPLY AND RETURN AIR STREAMS 2000 CFM AND ABOVE, AS REQUIRED BY CODE/NFPA. DETECTORS INSTALLED BY MECHANICAL CONTRACTOR AND SUPPLIED/WIRED BY ELECTRICAL CONTRACTOR.
- OUTDOOR AIR INTAKE LOUVER
 - LOUVER TO BE 42X48 BASED ON MFG: UNITED ENERTECH MODEL: FL-D-4
 - SLEEVE AND SEAL AROUND LOUVER WEATHER TIGHT
 - MECHANICAL CONTRACTOR TO USE EXISTING OPENING AND ADJUST OPENING SIZE AS NECESSARY TO FIT NEW LOUVER
 - PROVIDE WITH BUG SCREEN
- MOUNT CONDENSING UNIT AT GRADE ON 6" THICK RE-INFORCED CONCRETE PAD
 - PAD EXTENDS 6" ON EVERY SIDE OF UNIT
 - MAINTAIN 36" CLEARANCE TO ELECTRICAL ACCESS PANELS
 - ROUTE REFRIGERANT PIPING FROM CONDENSING UNIT UP IN EXTERIOR WALL (OR CHASE) AND TO CORRESPONDING A/C UNIT
 - MINIMIZE PIPING EXPOSED ON EXTERIOR
 - SEAL ALL PENETRATIONS TO EXTERIOR WEATHER TIGHT.
 - MAINTAIN MANUFACTURERS RECOMMENDED CLEARANCES BETWEEN/AROUND UNITS.
- INSTALL RETURN GRILLE USING EXISTING OPENING AND ADJUST OPENING SIZE AS NECESSARY TO FIT NEW GRILLE
- INSTALL TRANSFER GRILLE HIGH ON WALL ABOVE DROP CEILING FOR RETURN AIRFLOW.

- POSITIVE PRESSURE RELIEF ASSEMBLY (FOR ECONOMIZER CYCLE OF AHU-1)
 - PROVIDE 42X36 DUCT FROM GRILLE TO 42X36 LOUVER IN EXTERIOR WALL
 - INSTALL BAROMETRIC RELIEF DAMPER IN DUCT TO ACTUATE OPEN UPON EXCESS BUILD UP OF OUTSIDE AIR DUE TO ECONOMIZER CYCLE OF AHU-1
 - LOUVER SELECTION BASED ON MFG: UNITED ENERTECH MODEL: FL-D-4
 - LOUVER AND GRILLE TO BE MOUNTED HIGH ON WALL AT A MINIMUM 15' AFF
- INLINE EXHAUST FAN
 - SUSPEND FROM STRUCTURE USING VIBRATION ISOLATION HANGING KIT.
 - INSTALL TO MAINTAIN MANUFACTURERS CLEARANCES
 - ROUTE EXHAUST DUCT FROM FAN TO LOUVER IN EXTERIOR WALL
 - SLEEVE AND SEAL AROUND LOUVER WEATHER TIGHT.
- EXHAUST AIR LOUVER
 - LOUVER TO BE 12X12 BASED ON MFG: UNITED ENERTECH MODEL: FL-D-4
 - SLEEVE AND SEAL AROUND LOUVER WEATHER TIGHT
 - PROVIDE WITH BUG SCREEN



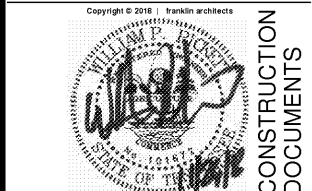
1 Mechanical - HVAC - Gym Addition
1/8" = 1'-0"

franklin architects
1415 Market Street P.O. Box 4048
Chattanooga, TN 37405
v: 423.266.1207 f: 423.266.1216

In association with:
Project No. 150-18
A.E.E.D. inc.
Advanced Energy
Engineering & Design, Inc.
408 McCallie Ave
Chattanooga, TN 37402
www.aeedinc.com
(423) 752-3438

CCS Gym
Expansion + Spirit
Store
for
**Chattanooga
Christian School**
3354 Charger Dr.
Chattanooga, TN 37409

This drawing is the property of
Franklin Associates Architects Inc.
Any use, reuse, reproduction, display
or sale of this drawing without the
express written consent of the Architect
is strictly prohibited.



Revisions		
No.	Issue	Date

Sheet Information	
Date	11.26.2018
Job No.	6774.3 / 6774.4

Title
MECHANICAL

HVAC PLAN - GYM
ADDITION

Sheet

M101
ORIENTATION

Last Plotted: 11/26/2018 4:16:55 PM