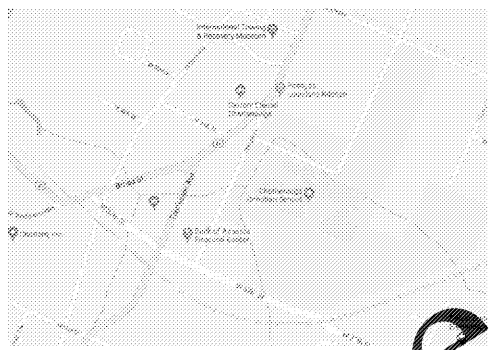


ANTICIPATED STARTING DATE: *-*-* ANTICIPATED COMPLETION DATE: *-*-*

ACTIVITY	ACTIVITY SCHEDULE																															
	ACTIVITY (WEEKS)																															
EROSION CONTROL MEASURES	1	2	3	4	5	6	7	8	9	10	11	12	13	14	15	16	17	18	19	20	21	22	23	24	25	26	27	28	29	30		
CLEARING																																
ROUGH GRADING																																
TEMPORARY STABILIZATION																																
FINAL GRADING																																
BUILDING IMPROVEMENTS																																
FINAL STABILIZATION																																

INDEX OF CIVIL PLAN SHEETS

C-1.0	EROSION CONTROL PLAN
C-1.1	EROSION CONTROL DETAILS
C-2.0	SITE PLAN
C-3.0	GRADING AND DRAINAGE PLAN
C-4.0	UTILITY PLAN
C-5.0	MISC. DETAILS

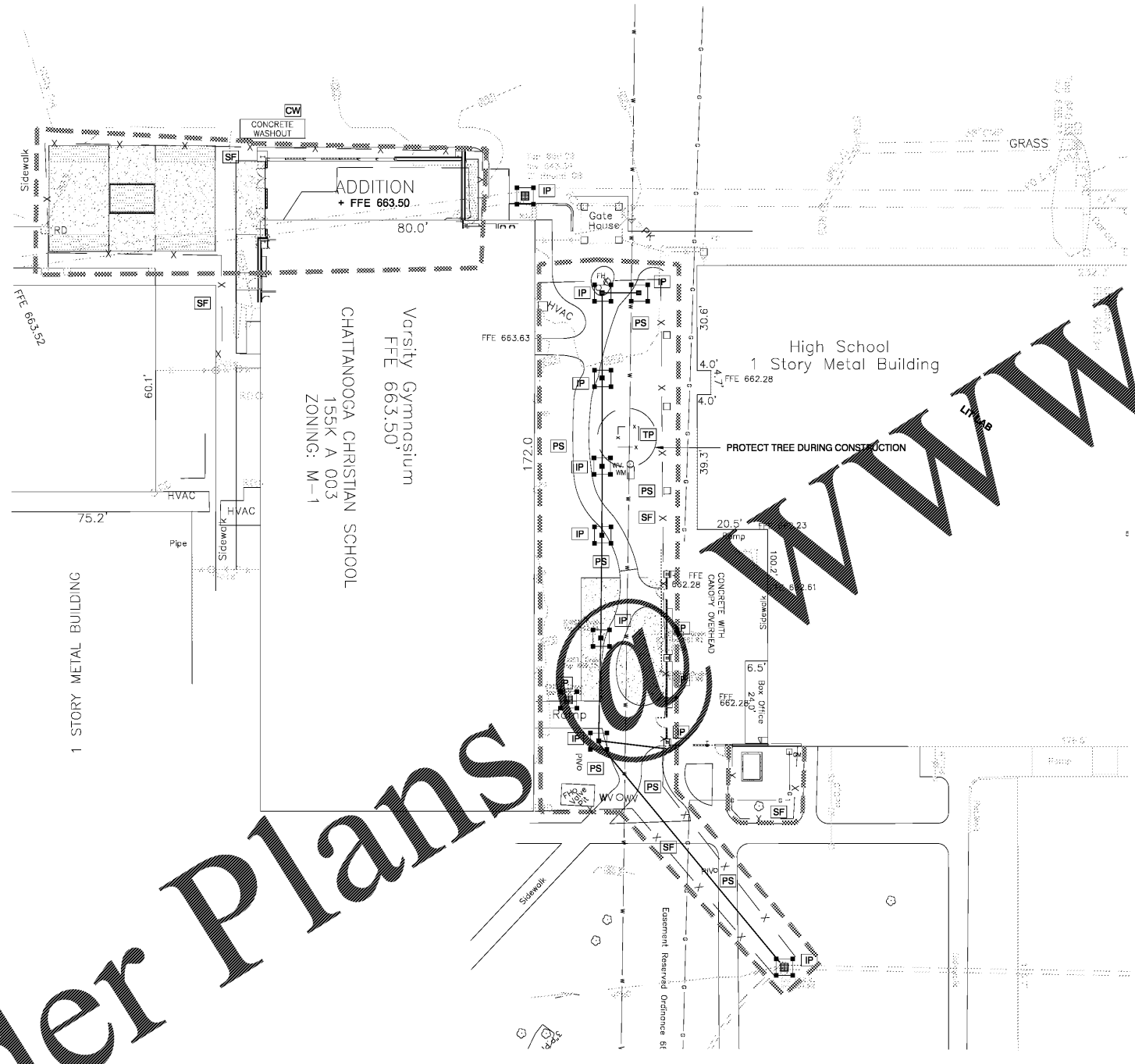


VICINITY MAP
N.T.S.

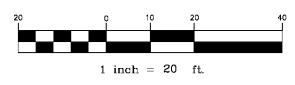
Erosion Control Notes

- No trees are to be removed and/or vegetation disturbed except as necessary for grading purposes.
- Topsoil is to be stripped from all cut and fill areas, stockpiled, and redistributed over all graded areas to a maximum of 4". Areas not covered by buildings or paving to receive topsoil.
- Graded areas including slopes are to be stabilized within 14 days after grading is completed. Coordinate with landscaping drawings as to type of permanent ground cover to be used. At a minimum all disturbed areas are to be seeded and mulched.
- Cut and fill slopes are not to exceed 3:1 unless otherwise noted.
- Construct erosion control devices as shown and where designated by the engineer.
- All new structures and existing structures shall have all sediment removed prior to acceptance.
- All dimensions and locations of temporary soil erosion and water pollution control devices shall be subject to adjustment as necessary to be effective.
- When the temporary soil erosion and water pollution control devices are no longer required for the intended purpose they shall be removed.
- Silt fences are to be replaced when effectiveness is significantly reduced, or as directed.
- Erosion control measures shall meet or exceed minimum criteria, standards and specifications set by the City of Chattanooga and TDEC.
- Contractor shall ensure that any erosion control measures do not cause water to enter onto roadway.
- All inspections shall be in accordance with Tennessee, General Permit No. TNR100000, Stormwater Discharges from Construction Activities, Section 3.5.8.
- Topsoil material and seeding
 - Topsoil material shall be saved for use in finish grading. After sifting out all plant growth, rubbish, and stones, use for areas designated to receive grass. If stockpiled topsoil is not sufficient quantity to complete work, furnish acceptable topsoil for grass areas unless noted otherwise on the drawings. Grass areas shall be defined as that graded area disturbed during construction not to be paved or built upon.
 - Acceptable topsoil material shall be defined as natural fertile, agricultural soil, capable for sustaining vigorous plant growth, uniform composition throughout, without admixture of subsoil, free of stones, lumps, plants and their roots, sticks, or other extraneous matter, do not deliver while in a frozen or muddy condition.
 - Grass seed shall be of the previous season's crop and the date of analysis shown on each bag for testing. Grading contractor shall hire a qualified landscape contractor to prep for and perform all permanent seeding.
 - The seed shall comply with all provisions of the U.S. Department of Agriculture as to labeling, purity, and germination.
 - Permanent stand of grass shall be established 30 days prior to grand opening. All watering, maintenance, mowing, etc. shall be performed by the site contractor with acceptance by owner.
- See detail sheets for additional details on erosion and sediment control.
- Site shall be stabilized within 14 days of the cessation of construction activities.

EROSION CONTROL LEGEND		
7.8	TS	TEMPORARY VEGETATION
7.9	PS	PERMANENT VEGETATION
7.16	CW	CONCRETE WASHOUT
7.34	SF	SILT FENCE OR SILT WATTLE
7.35	IP	INLET PROTECTION
7.4	TP	TREE PRESERVAION
		LIMITS OF DISTURBED AREA



EROSION CONTROL PLAN



franklin architects
1425 N Market Street, P.O. Box 4048
Chattanooga, TN, 37405
Tel: 423.266.1077 f: 423.266.1216

In association with:
CIVIL ENGINEER:

MILLER MCCOY, INC.
CONSULTING ENGINEERS
915 CREEKWOOD ROAD CHATTANOOGA, TENNESSEE 37408
PHONE (423) 698-2881 FAX (423) 698-2884
© Copyright 2014 Miller-McCoy, Inc.

CCS Gym
Expansion+Spirit
Store
for
**CHATTANOOGA
CHRISTIAN SCHOOL**



3354 Charger Dr., Chattanooga, TN 37409

This drawing is the property of
Franklin Associates Architects Inc.
Any use, reuse, reproduction, display
or sale of this drawing without the
express written consent of the Architect
is strictly prohibited.

Copyright © 2017 | franklin architects



Construction
Documents

Revisions

No.	Issue	Date

Sheet Information

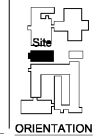
Date	11/26/18
Job No.	6774.3/6774.4

Title

CIVIL
EROSION
CONTROL
PLAN

Sheet

C-1.0



Order Plans



IT IS THE CONTRACTORS RESPONSIBILITY TO CONTACT
UTILITY COMPANIES PRIOR TO ANY CONSTRUCTION AS
THE LOCATION OF UTILITIES SHOWN ON THIS PLAN ARE
APPROXIMATE AND POSSIBLY INCOMPLETE. THEREFORE
CERTIFICATION TO THE LOCATION OF ALL UNDERGROUND
UTILITIES IS WITHHELD.