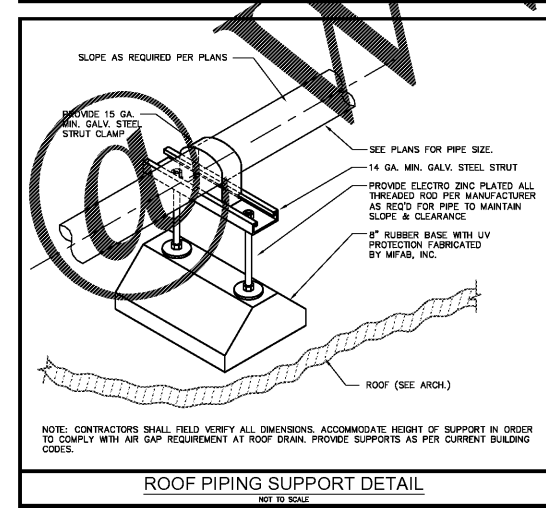
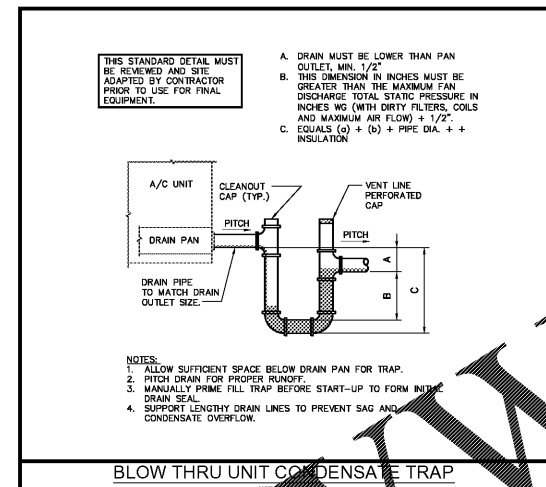
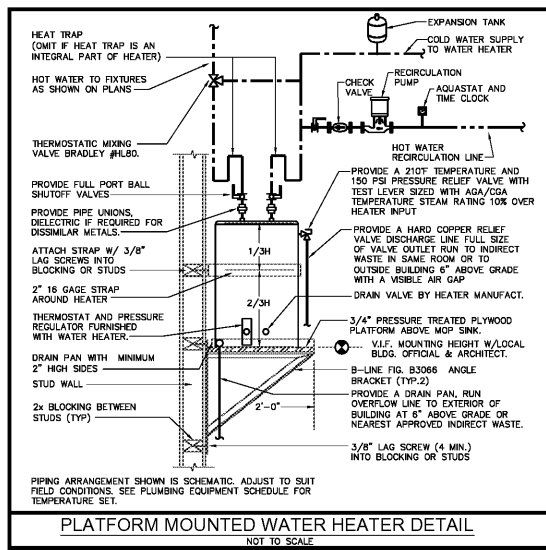
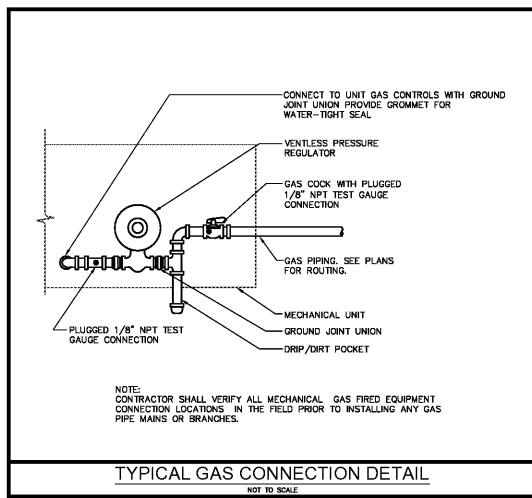


Order Plans



- ### PLUMBING NOTES
1. ALL WORKMANSHIP AND MATERIALS SHALL BE IN STRICT ACCORDANCE WITH THE INTERNATIONAL PLUMBING CODE (IPC) 2012 AS AMENDED BY THE STATE OF GEORGIA, APPLICABLE LOCAL CODES, RULES AND ORDINANCES.
 2. PLUMBING CONTRACTOR SHALL VISIT THE JOB SITE AND THOROUGHLY FAMILIARIZE HIMSELF WITH ALL EXISTING CONDITIONS.
 3. ALL MATERIALS SHALL BE NEW.
 4. ALL WORK SHALL BE PERFORMED BY A LICENSED PLUMBING CONTRACTOR IN A FIRST CLASS WORKMANLIKE MANNER. THE COMPLETED SYSTEM SHALL BE FULLY OPERATIVE. ALL EXCAVATION AND BACKFILL AS REQUIRED FOR THIS PHASE OF CONSTRUCTION SHALL BE PART OF THIS CONTRACT.
 5. REQUIRED INSURANCE SHALL BE PROVIDED BY THE PLUMBING CONTRACTOR FOR PROTECTION AGAINST PUBLIC LIABILITY AND PROPERTY DAMAGE FOR THE DURATION OF THE WORK.
 6. PLUMBING CONTRACTOR SHALL SECURE AND PAY FOR ALL PERMITS, FEES, INSPECTION AND TESTS. PLUMBING CONTRACTOR TO OBTAIN PERMIT AND APPROVED SUBMITTALS PRIOR TO BEGINNING WORK OR ORDERING EQUIPMENT. PLUMBING CONTRACTOR MUST BE PRESENT FOR ALL INSPECTIONS OF HIS WORK BY REGULATORY AUTHORITIES.
 7. DRAWINGS ARE DIAGRAMMATIC. DO NOT SCALE FOR THE EXACT LOCATION OF FIXTURES, PIPING, EQUIPMENT, ETC.
 8. ALL WORK SHALL BE COORDINATED WITH OTHER TRADES TO AVOID INTERFERENCE WITH THE PROGRESS OF CONSTRUCTION. REPORT ANY DISCREPANCY TO ENGINEER/ARCHITECT PRIOR TO BEGINNING CONSTRUCTION.
 9. VERIFY LOCATION, SIZE, DIRECTION OF FLOW AND INVERTS OF ALL EXISTING UTILITIES PRIOR TO BEGINNING OF CONSTRUCTION. ADVISE ENGINEER OF ANY DISCREPANCIES.
 10. COORDINATE LOCATION OF ALL PIPING CONNECTIONS TO BUILDING WITH LOCAL UTILITY AND CIVIL ENGINEER. PROVIDE APPROVED BACKFLOW PREVENTION DEVICE, MAIN SHUT-OFF VALVE AND PRESSURE REDUCING VALVE AT WATER SERVICE.
 11. WATER DISTRIBUTION PIPING ABOVE AND BELOW GROUND SHALL BE TYPE "L" COPPER. COORDINATE WITH LOCAL JURISDICTION FOR ADDITIONAL REQUIREMENTS. PROVIDE ALTERNATE FOR CPVC PIPING EQUAL TO BFGOODRICH "FLOWGUARD COLD".
 12. SOIL, WASTE, VENT AND RAINWATER PIPING SHALL BE CAST IRON OR PVC, WHERE CODE ALLOWS. PVC MAY NOT BE USED THRU RATED ASSEMBLIES OR IN PLENUMS.
 13. ALL GAS PIPING SHALL BE SCHEDULE 40 BLACK STEEL, SCREW TYPE FOR PIPING 2 INCH AND SMALLER PER ASTM A-120, WELD TYPE FOR PIPING 2-1/2 INCH AND LARGER PER ASTM A-53. BURIED STEEL PIPE IN CONTACT WITH THE EARTH SHALL BE METALLIC ARC WELDED AND COATED WITH HIGH DENSITY "X-TRU-COAT" POLYETHYLENE AND WITH POLYETHYLENE TAPE COAT JOINTS. PROVIDE IDENTIFICATION ON GAS PIPING SYSTEM.
 14. ALL FIXTURES MUST BE PROVIDED WITH READILY ACCESSIBLE STOPS AND APPROPRIATELY MARKED ACCESS PANELS. COORDINATE LOCATIONS WITH GENERAL CONTRACTOR PRIOR TO INSTALLATION.
 15. FURNISH AND INSTALL APPROVED WATER HAMMER ARRESTORS FOR ALL (GROUP) FIXTURES, SIZED AND LOCATED PER MANUFACTURER'S INSTALLATION INSTRUCTIONS AND PER IM-201.
 16. ELECTRIC EQUIPMENTS ARE REQUIRED BETWEEN ALL DISSIMILAR METALS INCLUDING AND EQUIPMENT CONNECTIONS.
 17. ISOLATE COPPER PIPING FROM HANGER OR SUPPORTS WITH ISOLATOR PADDING MATERIAL.
 18. ALL FIRE RATED FLOOR AND WALL PENETRATIONS SHALL BE PROPERLY PROTECTED FROM FIRE, SMOKE AND WATER PENETRATION BY PLUMBING WOODS BETWEEN PIPE AND FLOORS AS PART OF THE PLUMBER'S WORK.
 19. PLUMBING CONTRACTOR SHALL GUARANTEE ALL MATERIALS AND WORKMANSHIP FREE FROM DEFECTS FOR A PERIOD OF NOT LESS THAN ONE YEAR FROM DATE OF ACCEPTANCE. CORRECTION OF ANY DEFECTS SHALL BE COMPLETED WITHOUT ADDITIONAL CHARGE AND SHALL INCLUDE REPAIRMENT OR REPAIR OF ANY OTHER PHASE OF THE INSTALLATION WHICH MAY HAVE BEEN DAMAGED.
 20. PROVIDE ACCESS PANELS FOR ALL CONCEALED VALVES. ALL WATER HAMMER ARRESTORS ACCESS PANELS IN RATED WALL MUST MATCH THE SAME RATING AND MUST MATCH FINISH OF THE WALL IN WHICH IT IS INSTALLED.
 21. PROVIDE CLEANOUT COVER PLATE AND CLEANOUT PLUG FOR ACCESS PANEL FOR ALL WALL CLEANOUT FIXTURES. NONE TO BE USED IN MEDICAL ROOMS OR IN CEILING SPACES WHERE USED AS REPAIRABLE PLUMBING.
 22. ALL HORIZONTAL SANITARY OVERHEAD PIPING PERMITTED IN ELECTRICAL OR ELEVATOR EQUIPMENT ROOMS.
 23. ALL CONCEALED VALVES SHALL BE TAGGED AND MARKED. A REPRODUCIBLE DIAGRAM LOCATING ALL VALVES SHALL BE PROVIDED FOR OWNER/OPERATOR.
 24. ALL CONDENSATE DRAIN PIPING SHALL BE TYPE "L" COPPER WITH 1" ARMAFLEX INSULATION WHERE USED IN A RETURN AIR PLENUM. PVC PIPING WITH 1" ARMAFLEX INSULATION MAY BE USED IN LOCATIONS WHERE ALLOWED BY LOCAL CODES. SEE PLUMBING DRAWINGS FOR SIZE AND LOCATION OF PIPING.
 25. CONDENSATE LINES SHALL NOT DRAIN ON THE ROOFING SYSTEM OR ANY OF ITS COMPONENTS AND CONDENSATE LINES NEED NOT COMPLY WITH MIN. CLEARANCE REQUIREMENTS.
 26. PROVIDE ANGLE STOPS ON ALL WATER SERVICE LINES TO FIXTURES FOR INDIVIDUAL SHUT-OFF.
 27. WATER PIPING INSULATION SHALL BE ARMAFLEX OR EQUAL INSTALLED IN ACCORDANCE WITH MANUFACTURER'S INSTRUCTIONS FOR ALL HOT WATER PIPING. WHERE DOMESTIC WATER TEMPERATURES CAN CAUSE SWEATING ALL COLD WATER PIPING SHALL BE INSULATED WITH ARMAFLEX INSULATION, THICKNESS AS PER ECC 2012.
 28. FOR AUTOMATIC-CIRCULATING HOT WATER SYSTEM, HOT WATER PIPING SHALL BE INSULATED WITH 1" OF INSULATION PER ECC 2012.
 29. STUDDOR MINI/MAJOR AIR ADMITTANCE VALVES MAY BE USED AS AN ALTERNATE TO VENT PIPING THRU ROOF WHERE ACCEPTABLE BY THE PLUMBING OFFICIAL AND LOCAL CODES. INSTALLATION SHALL BE AS PER MANUFACTURER'S RECOMMENDATIONS.
 30. ALL HORIZONTAL RAINWATER PIPING THAT RECEIVES CONDENSATE DISCHARGE FROM AIR CONDITIONING EQUIPMENT SHALL BE INSULATED WITH 1" THICK INSULATION.

- ### GENERAL DEMOLITION NOTES
1. THE CONTRACTOR SHALL PROVIDE PROTECTION FOR ALL PARTS OF THE BUILDING, ITS CONTENTS AND OCCUPANTS WHEREVER WORK UNDER THIS CONTRACT IS PERFORMED.
 2. DEMOLITION SHALL INCLUDE REMOVAL OF EXISTING BUILDING CONSTRUCTION TO EXTENT REQUIRED TO PERFORM CONSTRUCTION ACTIVITIES INDICATED.
 3. THE DEMOLITION PROCEDURES SHALL PROVIDE FOR SAFE CONDUCT OF THE WORK. PROTECTION OF PERSONNEL, CAREFUL REMOVAL, AND DISPOSITION OF MATERIALS SPECIFIED TO BE SALVAGED, PROTECTION OF PROPERTY TO REMAIN UNDERGROUND, COORDINATION WITH OTHER WORK IN PROGRESS, AND TIMELY DISCONNECTION OF UTILITY SERVICES.
 4. EXISTING WORK TO REMAIN SHALL BE PROTECTED FROM DAMAGE. WORK DAMAGED BY THE CONTRACTOR SHALL BE REPAIRED TO MATCH EXISTING WORK OR WORK INSTALLED UNDER THIS CONTRACT DEPENDING ON CONTRACT REQUIREMENTS.
 5. EXISTING WORK SHALL BE CUT, DRILLED, ALTERED, REMOVED OR TEMPORARILY REMOVED AND REPLACED FOR PERFORMANCE OF WORK UNDER THE CONTRACT. WORK DEFACED DURING THIS CONTRACT SHALL BE RESTORED TO THE CONDITION AT TIME OF AWARD OF CONTRACT. CUT, ALTER, REMOVE OR TEMPORARILY REMOVE AND REPLACE EXISTING WORK FOR THE INSTALLATION OF MECHANICAL, PLUMBING AND ELECTRICAL WORK AND OTHER CONSTRUCTION.
 6. PROPERLY REMOVE AND DISPOSE OF ALL EXISTING FIXTURES AS REQUIRED TO ACCOMMODATE NEW PLAN. REFER TO THE ARCHITECTURAL DEMOLITION PLANS. CONSULT WITH THE OWNER AND OBTAIN OWNERS APPROVAL PRIOR TO DISPOSAL OF REMOVED MATERIAL.
 7. FOR ALL ADDITIONAL INFORMATION REGARDING CONTRACTUAL RESPONSIBILITIES, COORDINATE WITH ARCHITECTURAL PLANS.

PLUMBING SHEET INDEX

SHEET#	DESCRIPTION
P001	PLUMBING NOTES
P201	SANITARY PLAN - FIRST FLOOR
P202	SANITARY PLAN - SECOND FLOOR
P203	PLUMBING PLAN - ROOF
P301	DOMESTIC WATER PLAN - FIRST FLOOR
P302	DOMESTIC WATER PLAN - SECOND FLOOR
P501	PLUMBING RISERS AND ISOMETRICS

PLUMBING LEGEND

SYMBOL	DESCRIPTION	SYMBOL	DESCRIPTION
AAV	AIR ADMITTANCE VALVE	SS	SANITARY SEWER PIPING
AVF	ABOVE FINISHED FLOOR	V	VENT PIPING
CD	CLEAN OUT	CD	COLD WATER PIPING
CW	DOMESTIC COLD WATER	CD	COLD WATER PIPING (110")
HW	DOMESTIC HOT WATER	CD	COLD WATER RE-CIRCULATING PIPING
HWR	DOMESTIC HOT WATER RE-CIRCULATING	CD	CONDENSATE PIPING
SF	SQUARE FEET	CD	CLEAN OUT DRAIN PIPING
VTR	VENT THRU ROOF	CD	CLEAN OUT DRAIN LINE
CV	CLOSE VALVE	CD	CLEAN OUT
CV	CHECK VALVE	TR	TRAP
GV	GATE VALVE	CD	CAPPED END OF PIPE
GC	GAS COCK	CD	PIPE RISE UP
PC	POINT OF CONNECTION	CD	PIPE DOWN OR DROP
PR	PRESSURE REGULATOR	CD	DOWNPOUT COVER

SHOCK ARRESTOR SCHEDULE

MINIMUM SLOPE (inch per foot)	PSI DESIGNATION	SOLEX CHIEF MODEL	FIXTURE UNITS	CONNECTION	
2-1/2"	1/4	A	852-A	1-11	1/2"
3 to 6"	1/8	B	853-B	12-32	3/4"
8 or larger"	1/16	C	854-C	33-60	1"

TABLE 704-1 OF THE IPC 2012
SOLEX CHIEF SHOCK ARRESTORS APPROVED FOR INSTALLATION WITH NO ACCESS DOOR REQUIRED. CONFORMS TO ANSI/ASSE 1010 STANDARDS.

PLUMBING SYSTEMS MATERIAL SCHEDULE

SYSTEM	LINE TYPE	LOCATION	MATERIAL	INSULATION
SANITARY	---	ABOVE AND UNDERGROUND	PVC	NONE
SAN. VENT	V	ABOVE GROUND	PVC	NONE
COLD WATER	---	ABOVE AND UNDERGROUND	TYPE "L" COPPER	---
HOT WATER	---	ABOVE AND UNDERGROUND	TYPE "L" COPPER	1" ARMAFLEX
STORM	SD	ABOVE AND UNDERGROUND	PVC	NONE
OVER. STORM	OD	ABOVE AND UNDERGROUND	PVC	NONE
GAS	G	ABOVE AND UNDERGROUND	BLACK STEEL SCH40	NONE
CONDENSATE	CD	ABOVE AND UNDERGROUND	PVC	1" ARMAFLEX

PLUMBING EQUIPMENT & FIXTURE SCHEDULE

HLAV-1	LAVATORY, UNDERMOUNT, KOHLER, VERTICAL K-2882, WHITE, FAUCET, KOHLER, LOURE K14861-4. WATER CLOSURE, KOHLER KINGSTON, K-4328, WALL MOUNTED, WHITE, ELONGATED RM AND 1-1/2" TOP SPUD, DIRECT-FED SIPHON, JET ACTION, VITREOUS CHINA, OPEN FRONT SEAT, 18-1/2" HEIGHT, MUST MEET A.D.A. CODE. WATER CLOSURE CARRIER ISCA-141-4-D OR ISCA-133-L/R/2 AS REQUIRED. FLUSH VALVE, KOHLER TRIPPOINT, K-7531-CP, 1.28 GPF, HYBRID ENERGY CELL.
HWC-1	WATER CLOSURE, KOHLER KINGSTON, K-4328, WALL MOUNTED, WHITE, ELONGATED RM AND 1-1/2" TOP SPUD, DIRECT-FED SIPHON, JET ACTION, VITREOUS CHINA, OPEN FRONT SEAT, 15" HEIGHT, MUST MEET A.D.A. CODE. WATER CLOSURE CARRIER ISCA-141-4-D OR ISCA-133-L/R/2 AS REQUIRED. FLUSH VALVE, KOHLER TRIPPOINT, K-7531-CP, 1.28 GPF, HYBRID ENERGY CELL.
WC-1	WATER CLOSURE, KOHLER KINGSTON, K-4328, WALL MOUNTED, WHITE, ELONGATED RM AND 1-1/2" TOP SPUD, DIRECT-FED SIPHON, JET ACTION, VITREOUS CHINA, OPEN FRONT SEAT, 15" HEIGHT, MUST MEET A.D.A. CODE. WATER CLOSURE CARRIER ISCA-141-4-D OR ISCA-133-L/R/2 AS REQUIRED. FLUSH VALVE, KOHLER TRIPPOINT, K-7531-CP, 1.28 GPF, HYBRID ENERGY CELL.
UR-1	URINAL, KOHLER BARON, K-4901-ET, WALL MOUNTED, VITREOUS CHINA, WHITE. FLUSH VALVE, KOHLER TRIPPOINT, K-7246-CP, 0.128 GPF, HYBRID ENERGY CELL.
SK-1	SINGLE BOWL SINK, UNDERMOUNT, KOHLER, VAULT K-3840-1, FAUCET, KOHLER, EVOKE K-38030, SATIN FINISH STAINLESS STEEL.
SK-2	BREAK ROOM SINK, STAINLESS STEEL, 21 x 15 ELKAY "GOURMET LUSTERSTONE" ELUH4D2115 SELF-RIMMING FAUCET, ELKAY #K870N0514 GOOSENECK WITH 2" LEVER HANDLES. MUST MEET ADA.
SK-3	ELKAY EWM6020C, THREE STATION WASH SINK WITH WRIST BLADE FAUCET PACKAGE, 60X20X8.
MS	MOP SINK - FIAT #MSB2424, 24x24x10 MOLDED STONE MOP SINK FAUCET - T&S B-0655-BSTR. SERVICE SINK FAUCET.
HDF/DF-1	HANDICAP DRINKING FOUNTAIN, OASIS MODEL, MMRSL, BI-LEVEL, WALL MOUNTED, BARRIER FREE. INSTALL, REMOTE CHILDER ABOVE CEILING OASIS MODEL, RB, 115V, 4.6A, CARRIER AS REQUIRED. MUST MEET A.D.A. CODE.
FD-1	5"x8" SQUARE GRATE FLOOR DRAIN, WADE MODEL #110365-TY. SATIN FINISH 304 STAINLESS STEEL AND PER ARCHITECTURAL FINISH SCHEDULE.
TLAV	LAVATORY - KOHLER #K-2005 "KINGSTON", WALL MOUNTED FAUCET - DELTA 501-DST, SINGLE LEVER FAUCET. PROVIDE WITH BELOW DECK MIXING VALVE.
THWC	WATER CLOSURE - KOHLER #K-96057-D "HIGHLOUFF" ELONGATED WITH TOP SPUD FAUCET - SLOAN #111-128 XL, REGAL FLUSH VALVE.
TWC	WATER CLOSURE - KOHLER #K-96053-0 "WELLCOME" ELONGATED WITH TOP SPUD FAUCET - SLOAN #111-128 XL, REGAL FLUSH VALVE.
TUR	URINAL - KOHLER #K-5016-ET "DEXTER" ELONGATED WITH 3/4" TOP SPUD FAUCET - SLOAN #189-1-XL, REGAL FLUSH VALVE.
WCD	WALL CLEANOUT, WADE MODEL # 8590 TAPPED PLUG WITH 8480R.
RD	ROOF DRAIN: WADE 3000-SD-52-53, AE EXTENSION AS REQUIRED.
ORD	OVERFLOW ROOF DRAIN: WADE 3000-SD-52-53, 2" AE EXTENSION AS REQUIRED.
P-1	ELEVATOR SUMP PUMP SHALL BE WEIL 1408-OSS, OIL SMART SUMP PUMP, 1/3 HP.
EWI	WATER HEATER SHALL BE 20 GAL. ELECTRIC 208V, 1 PHASE, 3.0 KW. LOOHNVAR JUNIOR MODEL #R202SS.
RP-1	TACO REGR. PUMP, MODEL 0011 BRONZE CASTING 3/4", 115V, 1/7 HP, 18AMP WITH "TOO" TIMER AQUASTAT.

- ### GENERAL NOTES
1. FIXTURES SHALL BE AS SHOWN OR EQUAL.
 2. ALL FIXTURES SHALL COMPLY WITH TABLE 804.3, 804.4 AND 804.5 OF IPC 2012.
 3. ALL FIXTURE TRIM PACKAGES INCLUDING BUT NOT LIMITED TO TRAP, ANGLE STOP, FLUSH VALVE, SUPPLY TUBES, AND CLEANOUT COVER PLATES SHALL BE OF THE SAME FINISH AS THE ABOVE SPECIFIED FAUCET AND PER ARCHITECTURAL FINISH SCHEDULE.
 4. ALL FIXTURES SHALL BE ROUGHED IN PER MANUFACTURER CUT SHEET TO MAINTAIN UNIFORMITY.
 5. THERMOSTATIC MIXING VALVE SHALL BE PROVIDED FOR ALL LAVATORIES WITH HOT WATER DELIVERY SET TO 110°F. A SINGLE MIXING VALVE SHALL BE ACCEPTABLE FOR INSTALLATIONS WITH MULTIPLE LAVATORIES IN SAME LOCATION. MIXING VALVE SHALL COMPLY WITH ASSE 1070.
- ### WATER HEATER NOTES
1. PROVIDE WITH VACUUM RELIEF VALVE
 2. PROVIDE WITH EXPANSION TANK (MINIMUM ACCEPTANCE VOLUME OF 2 GALLONS)
 3. PROVIDE WITH DRAIN PAN
 4. ROUTE DRAIN TO NEAREST FLOOR DRAIN
 5. SET TANK STORAGE TEMPERATURE TO 130°F
 6. PROVIDE WITH MIXING VALVE TO REDUCE TEMPERATURE TO 120°F
 7. PROVIDE WITH HOT WATER RE-CIRCULATOR PUMP FOR INSTALLATIONS WHERE THE HOT WATER PIPING EXCEEDS 50 FEET.



Signed & Sealed: 08/30/18
 Copyright © 2014 by YSM Design, P.C.
 All rights reserved. No part of this publication may be reproduced, stored in a retrieval system, or transmitted in any form or by any means, electronic, mechanical, photocopying, recording, or by any information storage and retrieval system, without the prior written permission of YSM Design, P.C. It is to be returned upon request. Name as noted on any work on the signed document.

Rev	Date	Comments
	08/30/18	Permit/Bid Set

BID SET
 Every Contractor or Subcontractor, by submitting a bid for this project declares that they have reviewed all aspects of this project and have included all work required to provide a complete project that meets all building codes.
 If questions or discrepancies are found between trades, these should be corrected by the issuing General Contractor as a Request For Information before bids are due. These clarifications will be issued to all Bidders in Atlanta. No consideration will be given after the bid date for issues that could clearly have been answered during the Bidding Period.
 Information to all Bidders:
 For more information about this bid, including a list of the most current documents, instructions to Bidders, Responsibility Chart, answers to RFIs, etc., go to project website. Note this address will be provided to bidders with invitation to bid.
 It is the responsibility of ALL Bidders to become familiar with this site and the additional information to be contained therein. If you do not have access to the internet you MUST contact your General Contractor for this information. No Change Orders will be accepted for not reviewing this information.
 No consideration will be given for Change Order Requests based on any of the following:
 1. Items requiring clarification but not clearly indicated as an exception on the bid set.
 2. Items requiring clarification but not submitted to Architect as a request for information during bidding.
 3. Items deemed to be industry standards for a particular system or assembly.
 4. Items that can reasonably be inferred from contract documents.



JIM ELLIS CADILLAC
 5880 PEACHTREE BLVD
 ATLANTA, GA 30341
 Project:
JIM ELLIS CADILLAC
 5880 PEACHTREE BLVD
 ATLANTA, GA 30341
 Project Number: 18020
 Drawn By: GD
 Checked By: DF
 Approved By: SM
 Sheet Title:
PLUMBING NOTES
 Sheet Number:
P001

