

| Rev | Date | Comments |
|-----|----------|----------------|
| | 08/30/18 | Permit/Bid Set |

BID SET

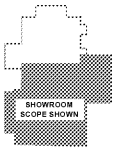
Every Contractor or Subcontractor, by submitting a bid for this project declares that they have reviewed all aspects of this project and have included all work required to provide a complete project that meets all building codes.

If questions or discrepancies are found between trades, these should be submitted by the Bidding Contractor as a Request For Information before bids are due. These questions will be issued to all Bidders in Atlanta. No consideration will be given after the bid date for issues that could clearly have been answered during the Bidding Period.

Information to all Bidders:
For more information about this bid, including a list of the most current documents, instructions to Bidders, Responsibility Chart, answers to RFI, etc., go to project website. Note: This address will be provided to bidders with invitation to bid.

It is the responsibility of ALL Bidders to become familiar with this site and the additional information that is contained therein. If you do not have access to the Internet you MUST contact your General Contractor for this information. No Change Orders will be accepted for not reviewing this information.

No consideration will be given for Change Order Requests based on any of the following:
1. Items requiring clarification but not clearly indicated as an exception on the bid set.
2. Items requiring clarification but not submitted to Architect as a request for information during bidding.
3. Items deemed to be industry standards for a particular system or assembly.
4. Items that can reasonably be inferred from contract documents.



Key Plan - Proposed



Client:
JIM ELLIS CADILLAC
5880 PEACHTREE BLVD
ATLANTA, GA 30341

Project:
JIM ELLIS CADILLAC
5880 PEACHTREE BLVD
ATLANTA, GA 30341

Project Number: 18020
Drawn By: GD
Checked By: DF
Approved By: SM

Sheet Title:
MECHANICAL PLAN - SECOND FLOOR

Sheet Number:
M202

GENERAL NOTES

ALL EXISTING MECHANICAL EQUIPMENT AND ACCESSORIES NOT SHOWN ARE TO BE REMOVED IN THEIR ENTIRETY. SEE NOTES OTHERWISE FOR GENERAL REMOVAL NOTES. SEE GENERAL REMOVAL SHEET OF THIS PROJECT.

- KEY NOTES**
- ALL MECHANICAL EQUIPMENT IN SHADED AREA IS EXISTING TO REMAIN.
 - O/A DUCT UP TO ROOF CAP.
 - S/A AND R/A DUCTS UP TO RTU-3 ABOVE. SEE SHEET M203 FOR CONTINUATION.
 - S/A AND R/A DUCTS UP TO RTU-4 ABOVE. SEE SHEET M203 FOR CONTINUATION.
 - S/A AND R/A DUCTS UP TO RTU-1 ABOVE. SEE SHEET M203 FOR CONTINUATION.
 - S/A AND R/A DUCTS UP TO RTU-5 ABOVE. SEE SHEET M203 FOR CONTINUATION.
 - S/A AND R/A DUCTS UP TO RTU-2 ABOVE. SEE SHEET M203 FOR CONTINUATION.
 - S/A, R/A AND E/A DUCTS IN MECHANICAL SHAFT DOWN TO FIRST FLOOR CEILING. SEE SHEET M201 FOR CONTINUATION.
 - E/A DUCT UP TO EF-2 ABOVE. SEE SHEET M203 FOR CONTINUATION.
 - E/A DUCT UP TO EF-3 ABOVE. SEE SHEET M203 FOR CONTINUATION.
 - 4"Ø O/A DUCT CONCEALED IN WALL CAVITY FROM AHU-3 UP TO ROOF CAP.
 - 8"Ø O/A DUCT UP TO ROOF CAP.
 - S/A AND R/A DUCTS UP TO RTU-6 ABOVE. SEE SHEET M203 FOR CONTINUATION.
 - OFFSET S/A DUCT BELOW EXISTING STRUCTURAL BEAM.
 - FLUE FROM RADIANT HEATERS BELOW.
 - PROVIDE BLANK-OFF FOR INACTIVE SECTIONS OF CONTINUOUS SLOT (TYPICAL).
 - E/A DUCT UP TO EF-1 ABOVE. SEE SHEET M203 FOR CONTINUATION.
 - LOCATION OF THERMOSTATS WITH REMOTE SENSORS FOR RTU-3, RTU-4, AND RTU-6 IN CONTROLLER ROOM.

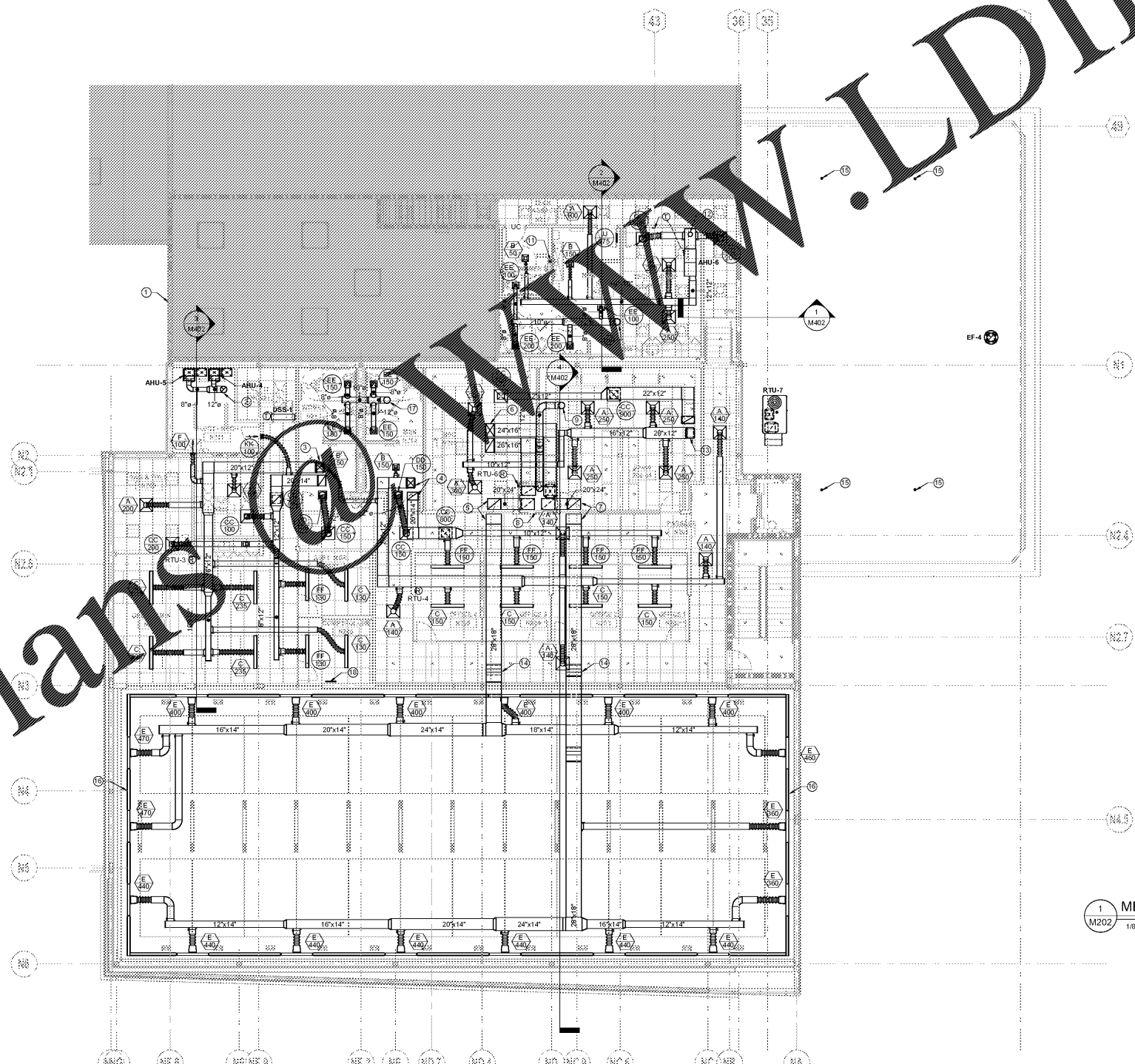
FLEX DUCT SCHEDULE

| S/A | R/A | FLOW (CFM) |
|------|------|-------------|
| 6"Ø | 8"Ø | 50 - 125 |
| 8"Ø | 10"Ø | 130 - 195 |
| 10"Ø | 12"Ø | 200 - 330 |
| 12"Ø | 15"Ø | 335 - 450 |
| 14"Ø | 18"Ø | 455 - 700 |
| - | 16"Ø | 705 - 1100 |
| - | 18"Ø | 1105 - 1600 |
| - | 22"Ø | 1605 - 2000 |

1. FLEX DUCT SHALL BE PER TABLE UNLESS NOTED OTHERWISE.
2. RETURN AIR FLEX DUCT SHALL BE SIZED BASED ON SUPPLY AIR IN SAME ROOM.

MECHANICAL PLAN - SECOND FLOOR
1/8" = 1'-0"

PROMUS
SCOTT MERIWETHER, P.E.
GEORGIA LICENSE #30780
518 BLACK CANYON PARK
CANTON, GA 30114
PROJECT MANAGER: GEORGE DAVIDOV
PHONE 678.246.5164



Order Plans on www.LDILLIING.com