



Signed & Sealed: 08/30/18

Copyright © 2014 YSM Design, P.C.
All rights reserved. Specifications, computer files, text data, notes and other documents and instruments prepared by YSM Design, P.C. are the work product of YSM Design, P.C. and are the property of YSM Design, P.C. and shall remain the property of YSM Design, P.C. No part of this drawing may be reproduced or transmitted in any form or by any means, electronic, mechanical, photocopying, recording, or by any information storage and retrieval system, without the prior written permission of YSM Design, P.C. This is a legal instrument and shall be void if not signed in the original drawing.

Rev	Date	Comments
	08/30/18	Permit/Bid Set

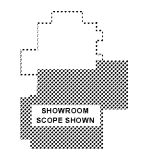
BID SET
Every Contractor or Subcontractor, by submitting a bid for this project declares that they have reviewed all aspects of this project and have included all work required to provide a complete project that meets all building codes.

If questions or discrepancies are found between trades, these should be submitted by the Subcontractor/Contractor as a Request For Information before bids are due. These questions will be issued to all Bidders in Atlanta. No consideration will be given after the bid date for issues that could clearly have been answered during the Bidding Period.

Information to all Bidders:
For more information about this bid, including a list of the most current documents, Instructions to Bidders, Responsibility Chart, answers to RFI, etc., go to project website. Note this address will be provided to bidders with invitation to bid.

It is the responsibility of ALL Bidders to become familiar with this site and the additional information that is contained therein. If you do not have access to the internet you MUST contact your General Contractor for this information. No Change Orders will be accepted for not reviewing this information.

No consideration will be given for Change Order Requests based on any of the following:
1. Items requiring clarification but not clearly indicated as an exception on the bid set.
2. Items requiring clarification but not submitted to Architect as a request for information during bidding.
3. Items deemed to be industry standards for a particular system or assembly.
4. Items that can reasonably be inferred from contract documents.



Key Plan - Proposed



Client:
JIM ELLIS CADILLAC
5880 PEACHTREE BLVD
ATLANTA, GA 30341

Project:
JIM ELLIS CADILLAC
5880 PEACHTREE BLVD
ATLANTA, GA 30341

Project Number: 18020
Drawn By: GD
Checked By: DF
Approved By: SM

Sheet Title:
MECHANICAL PLAN - FIRST FLOOR
Sheet Number:
M201

GENERAL NOTES

EXISTING MECHANICAL EQUIPMENT AND ACCESSORIES NOT IN SHADED AREA TO BE REMOVED IN THIS PROJECT UNLESS NOTED OTHERWISE. SEE GENERAL DEMOLITION NOTES ON SHEET M001 FOR ADDITIONAL SCOPE OF WORK.

- KEY NOTES**
- ALL MECHANICAL EQUIPMENT IN SHADED AREA IS EXISTING TO REMAIN.
 - 4"Ø FLUE UP TO ROOF CAP.
 - ROOF OPENING FOR EF-4 ABOVE. SEE SHEET M202 FOR CONTINUATION.
 - S/A AND R/A DUCTS FROM RTU-7 ABOVE. SEE SHEET M202 FOR CONTINUATION.
 - S/A AND R/A DUCTS FROM RTU-5 ABOVE. SEE SHEET M202 FOR CONTINUATION.
 - R/A DUCTS FROM RTU-1 AND RTU-2 ABOVE. SEE SHEET M202 FOR CONTINUATION.
 - S/A AND R/A DUCTS FROM AHU-4 AND AHU-5 ABOVE. SEE SHEET M202 FOR CONTINUATION.
 - 4"Ø O/A DUCT UP TO ROOF CAP. SEE SHEET M202 FOR CONTINUATION.
 - 4"Ø O/A DUCT TO 8x8 BRICKVENT RUSKIN MODEL BY OR EQUAL.
 - LOCATION OF THERMOSTATS WITH REMOTE SENSORS FOR RTU-1, RTU-2, RTU-5, RTU-7, AHU-1, AHU-2, AHU-4, AND AHU-5 IN SALES MANAGERS N111.
 - PROVIDE FIELD FABRICATED SHEET METAL PLENUM FOR PERFORATED RETURN AIR GRILLE.
 - PROVIDE 2 FOOT BLANK-OFFS FOR INACTIVE SECTIONS OF CONTINUOUS SLOT (TYPICAL).

FLEX DUCT SCHEDULE

S/A	R/A	FLOW (CFM)
8"Ø	8"Ø	50 - 125
8"Ø	10"Ø	130 - 195
10"Ø	12"Ø	200 - 330
12"Ø	12"Ø	335 - 450
14"Ø	14"Ø	455 - 700
-	16"Ø	705 - 1100
-	18x18	1105-1600
-	22x22	1605-2000

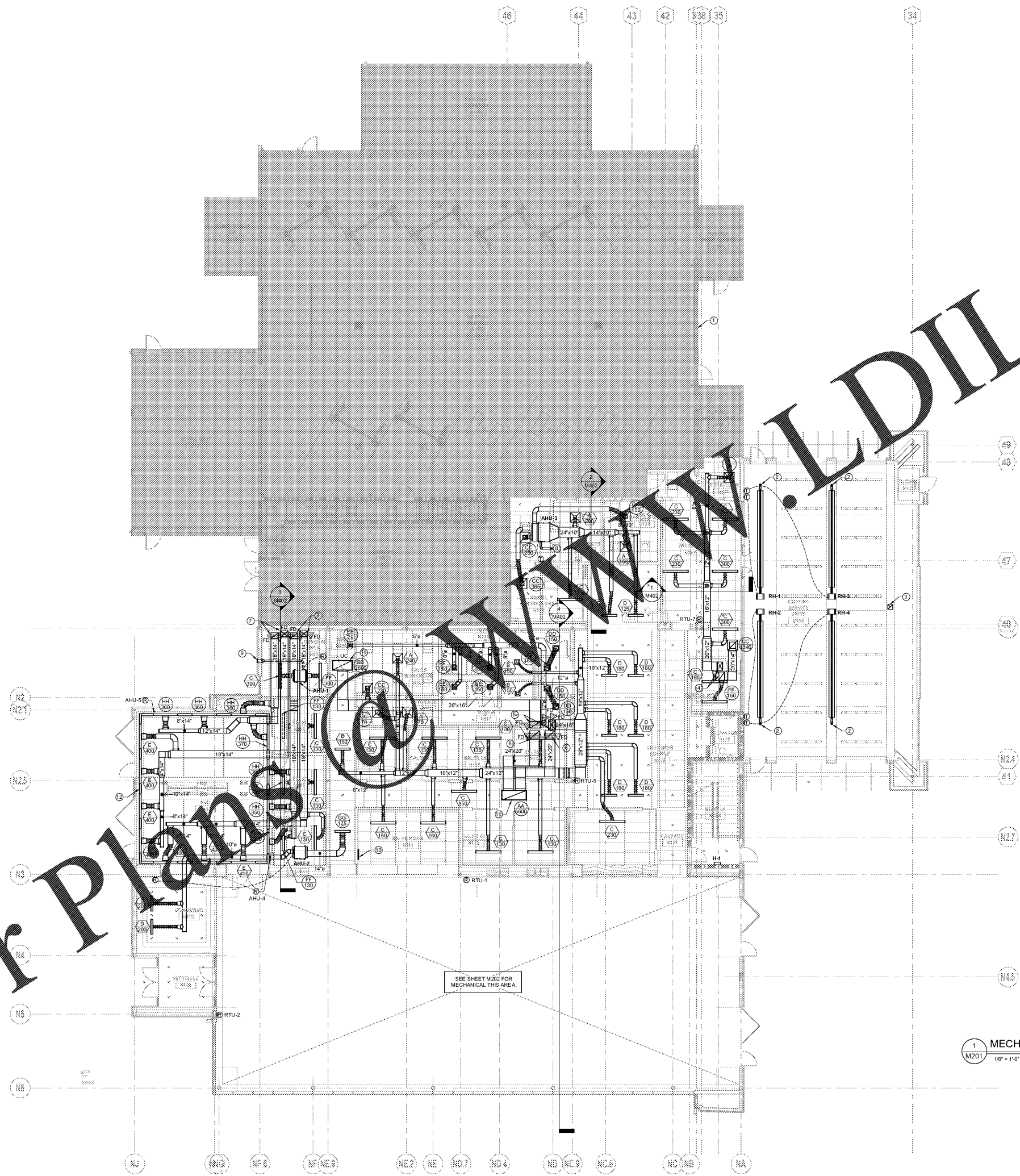
1. FLEX DUCT SHALL BE PER TABLE UNLESS NOTED OTHERWISE.
2. RETURN AIR FLEX DUCT SHALL BE SIZED BASED ON SUPPLY AIR IN SAME ROOM.

MECHANICAL PLAN - FIRST FLOOR
18" = 1'-0"

PROMUS
SCOTT MERIWETHER, P.E.
GEORGIA LICENSE #30780
518 BLACK CANYON PARK
CANTON, GA 30114
PROJECT MANAGER: GEORGE DAVIDOV
PHONE 678.246.5164

Order Plans

www.dline.com



SEE SHEET M202 FOR MECHANICAL THIS AREA.