



Signed & Sealed: 31 AUG 2018

Copyright © 2018 YSM Design, P.C.  
 All rights reserved. Specifications, computer files, text data, notes and other documents and information prepared by YSM Design, P.C. shall remain the property of YSM Design, P.C. and shall be held in confidence. No reproduction or distribution of this document is permitted without the written consent of YSM Design, P.C. or its authorized representative. Scale as noted on every view on the original drawings.

Rev	Date	Comments

**BID SET**

Every Contractor or Subcontractor, by submitting a bid for this project declares that they have reviewed all aspects of this project and have included all work required to provide a complete project that meets all building codes.

If questions or discrepancies are found between trades, bidders should be submitted by the building General Contractor as a Request for Information on form A910. These questions will be issued to all Bidders in Atlanta. No consideration will be given after the bid date for issues that could clearly have been assumed during the bidding period.

Information to all Bidders:  
 For more information about this bid, including a list of the most current documents, instructions to Bidders, Responsibility Chart, answers to RFI, etc., go to project website. Note this address will be provided to bidders with invitation to bid.

It is the responsibility of ALL Bidders to become familiar with this bid and the additional information that is contained herein. If you do not have access to the internet you MUST contact your General Contractor for this information. NO Change Orders will be accepted for not reviewing this information.

No consideration will be given for Change Order Requests based on any of the following:

- Items requiring clarification but not clearly indicated as an exception on the bid.
- Items requiring clarification but not submitted to Architect as a request for information during bidding.
- Items deemed to be industry standard for a particular system or assembly.
- Items that can reasonably be inferred or assumed from contract documents.



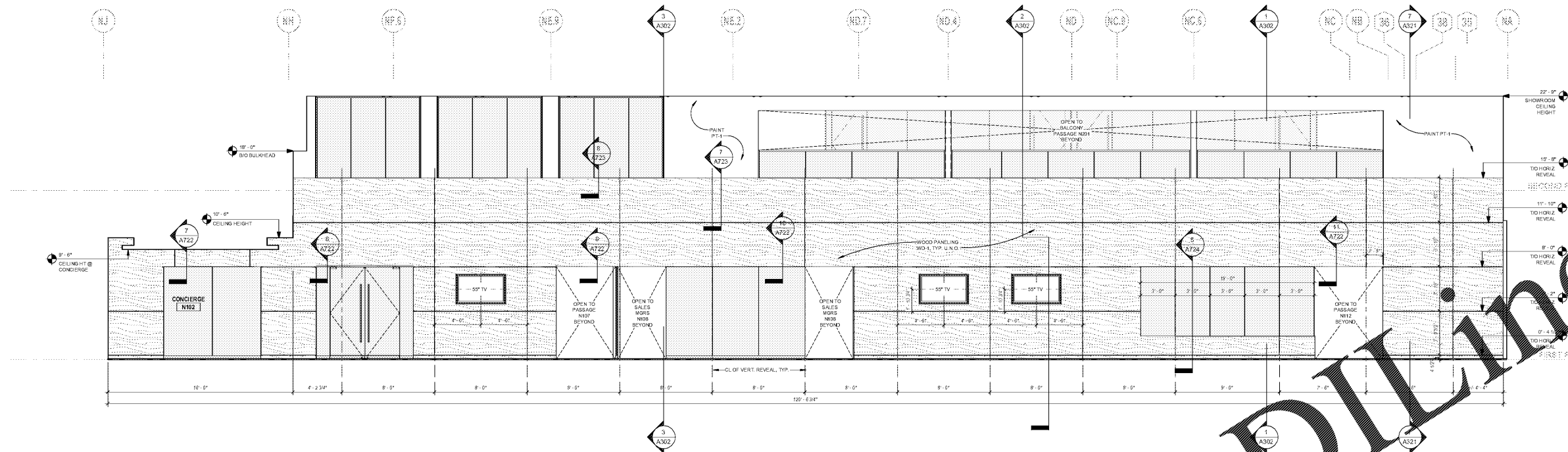
Client:  
**JIM ELLIS CADILLAC**  
 5880 PEACHTREE BLVD  
 ATLANTA, GA 30341

Project:  
**JIM ELLIS CADILLAC**  
 5880 PEACHTREE BLVD  
 ATLANTA, GA 30341

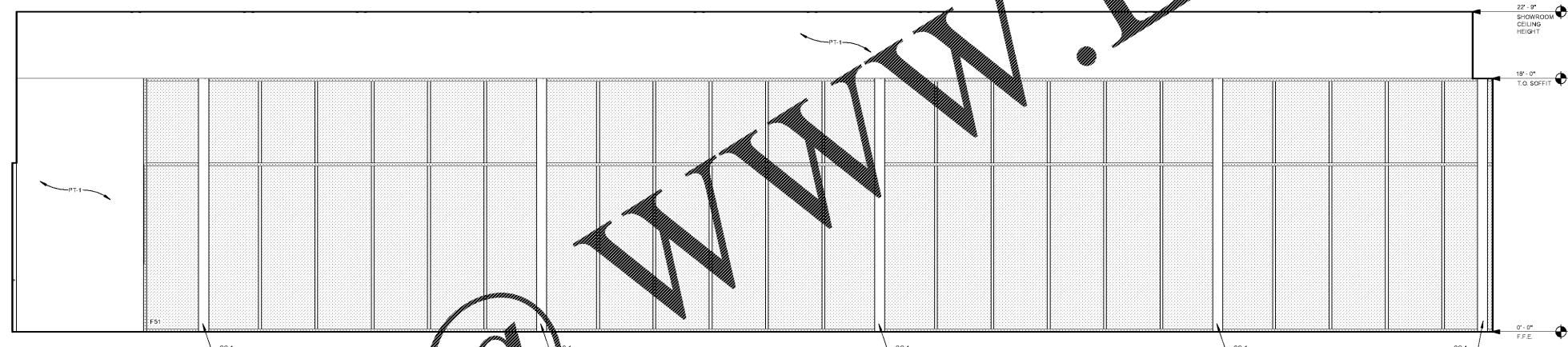
Project Number: 18020  
 Drawn By: TFL  
 Checked By: AEA  
 Approved By: YSM

Sheet Title:  
**SHOWROOM INTERIOR**

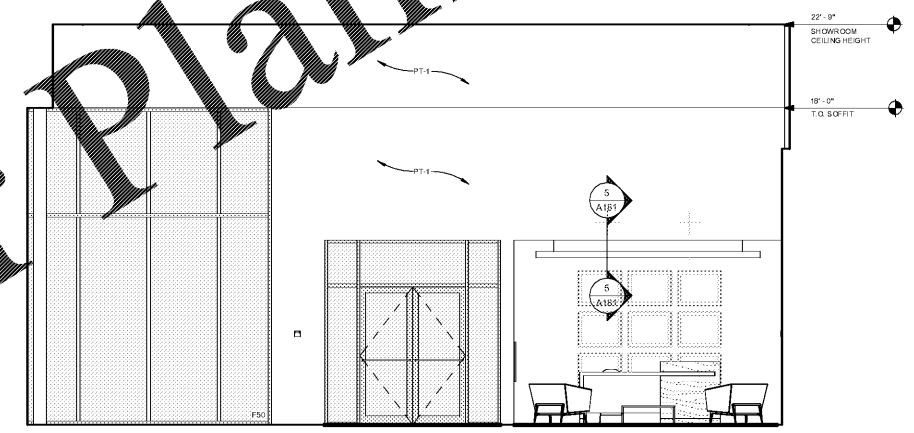
Sheet Number:  
**A901**



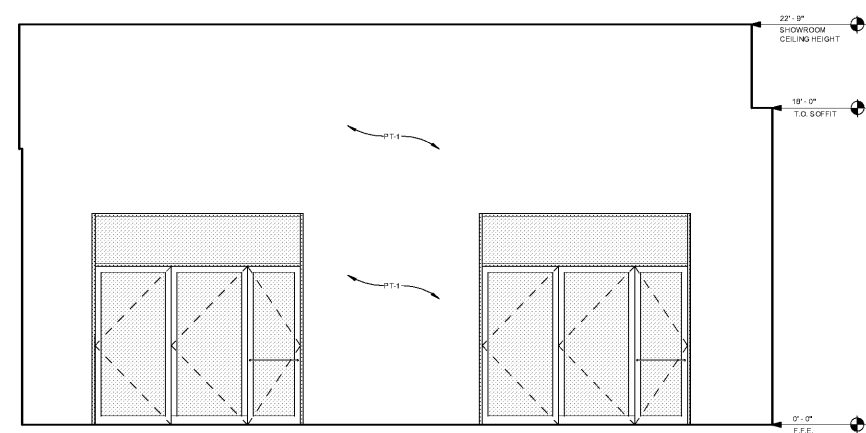
INTERIOR ELEVATION - SHOWROOM (NE)



2 SHOWROOM - ELEV. 01  
 A901 1/4" = 1'-0"



4 SHOWROOM - ELEV. 03  
 A901 1/4" = 1'-0"



3 SHOWROOM - ELEV. 02  
 A901 1/4" = 1'-0"

D:\esmith\2018\Jim Ellis Cadillac\A901.dwg  
 8/31/2018 4:00 PM  
 JIM ELLIS CADILLAC - esmith.rvt

Order Plans @ WWW.LDLINE.COM