

Signed & Sealed: 31 AUG 2018

Copyright © 2018 YSM Design, P.C.
All rights reserved. Reproduction, computer file, text data, notes and other documents and information contained herein are the property of YSM Design, P.C. and shall remain the property of YSM Design, P.C. All other rights reserved.

This drawing is not to be reproduced in whole or in part without written permission of YSM Design, P.C. or its authorized representative. Such as checked and only valid on the original drawing.

Rev	Date	Comments

BID SET

Every Contractor or Subcontractor, by submitting a bid for this project declares that they have reviewed all aspects of this project and have included all work required to provide a complete project that meets all building codes.

Information to all Bidders: For more information about this bid, including a list of the most current documents, instructions to bidders, Responsibility Chart, answers to RFI, etc., go to project website. Note this address will be provided to bidders with invitation to bid.

It is the responsibility of ALL Bidders to become familiar with this set and the additional information that is contained herein. If you do not have access to the internet, you MUST contact your General Contractor for this information. NO Change Orders will be accepted for not reviewing this information.

No consideration will be given for Change Order Requests based on any of the following:

- Items requiring clarification but not clearly indicated as an exception on the bid.
- Items requiring clarification but not submitted to Architect as a request for information during bidding.
- Items deemed to be industry standard for a particular system or assembly.
- Items that can reasonably be inferred or assumed from contract documents.



Client:

JIM ELLIS CADILLAC
5880 PEACHTREE BLVD
ATLANTA, GA 30341

Project:

JIM ELLIS CADILLAC
5880 PEACHTREE BLVD
ATLANTA, GA 30341

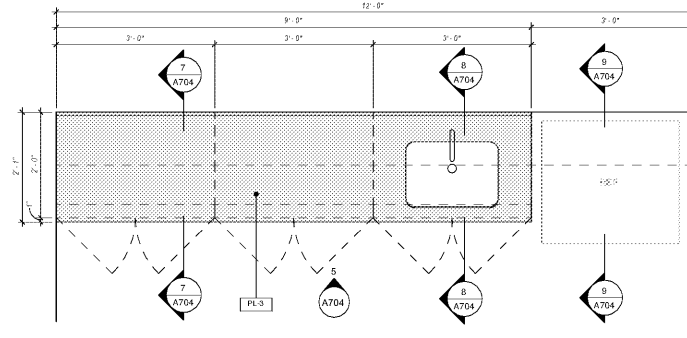
Project Number: 18020
Drawn By: Author
Checked By: Checker
Approved By: Approver

Sheet Title:

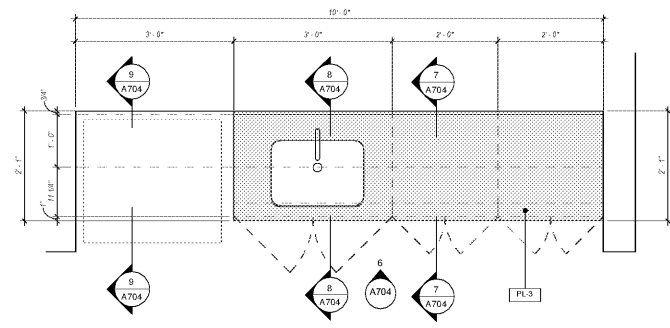
MILLWORK

Sheet Number:

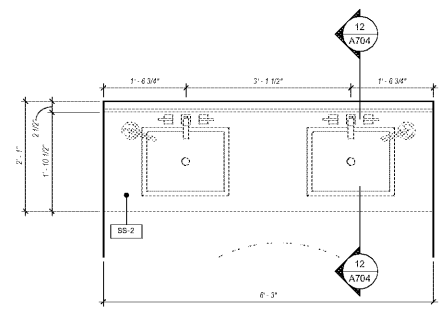
A704



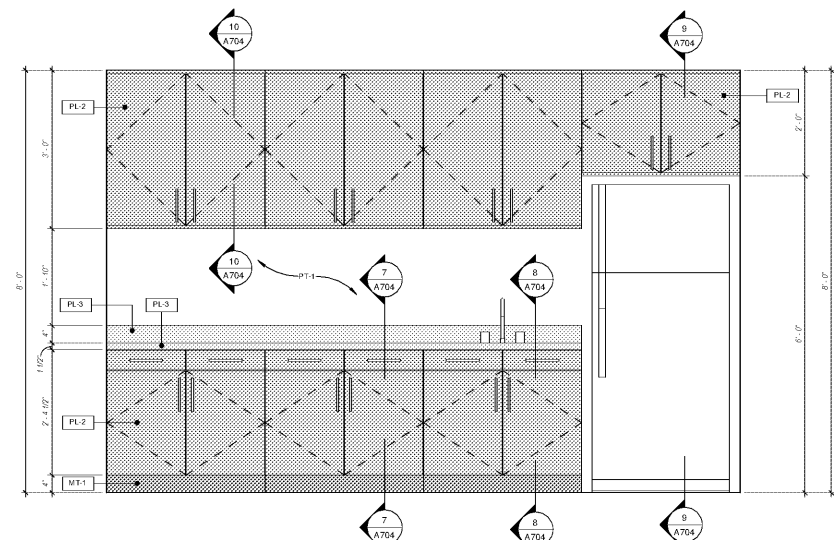
4 MILLWORK - BREAKROOM KITCHEN
A704 3/4" = 1'-0"



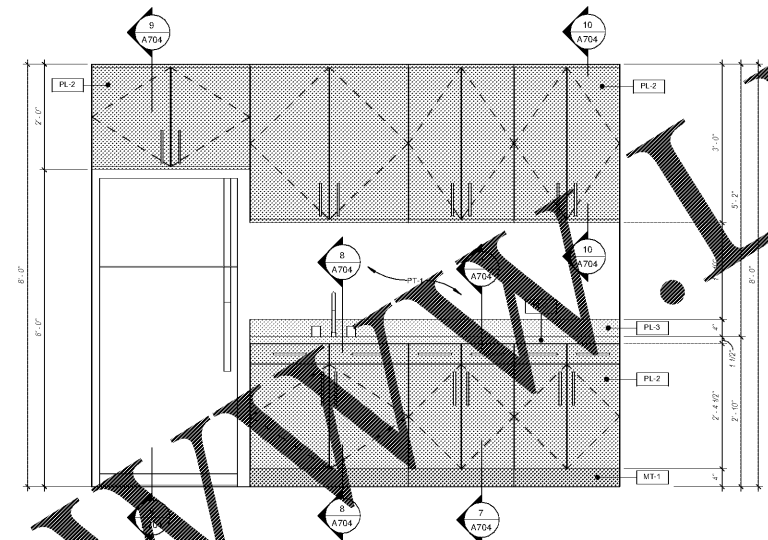
2 MILLWORK - ADMIN KITCHEN
A704 3/4" = 1'-0"



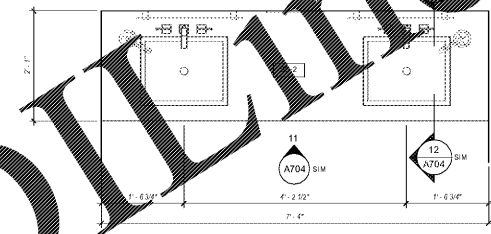
1 MILLWORK - RESTROOM COUNTERTOP
A704 3/4" = 1'-0"



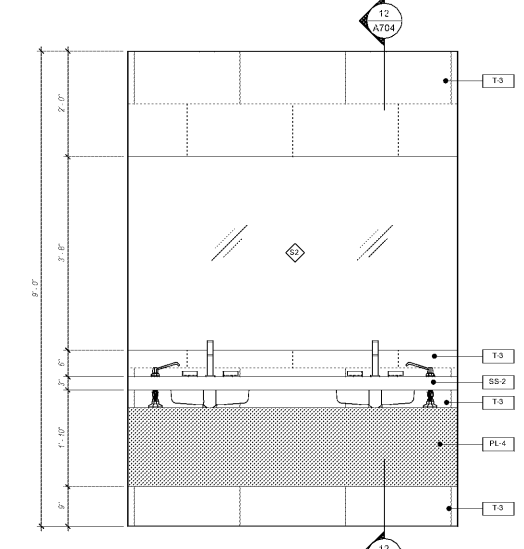
5 ELEVATION - BREAKROOM KITCHEN
A704 3/4" = 1'-0"



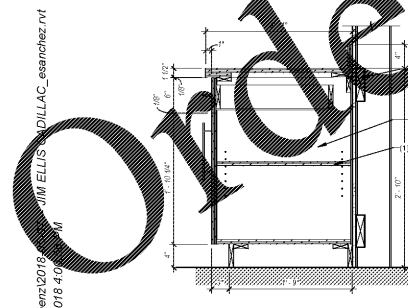
6 ELEVATION - ADMIN KITCHEN
A704 3/4" = 1'-0"



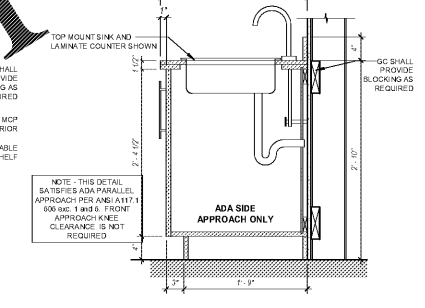
3 MILLWORK - ADMIN RESTROOM COUNTERTOP
A704 3/4" = 1'-0"



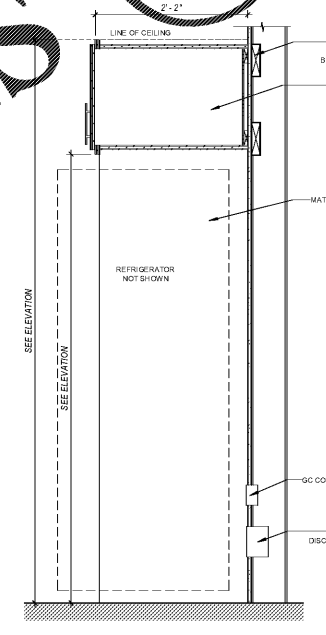
11 ELEVATION - SHOWROOM RESTROOM COUNTERTOP
A704 3/4" = 1'-0"



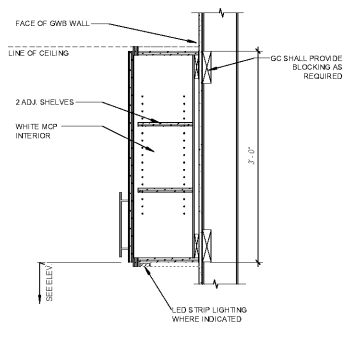
7 Cabinet - 2'-10" Base w/ Drawer
A704 1" = 1'-0"



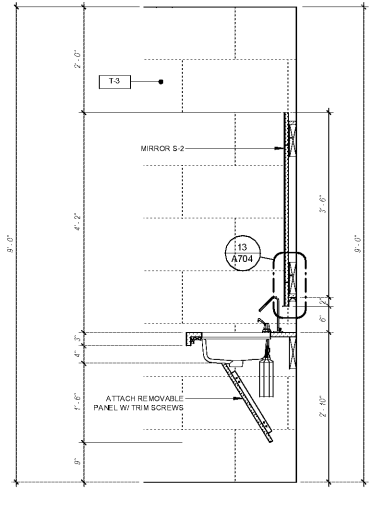
8 Cabinet - 2'-10" Base w/ Sink
A704 1" = 1'-0"



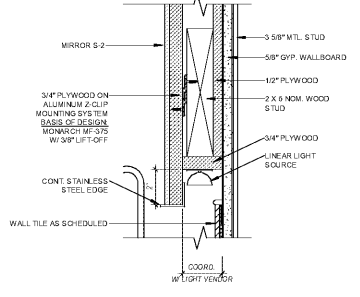
9 Cabinet - Fridge Box
A704 1" = 1'-0"



10 Cabinet - Upper
A704 1" = 1'-0"



12 SECTION 01 - RESTROOM COUNTERTOP
A704 3/4" = 1'-0"



13 DTL. SECT. @ REST. MIRROR
A704 3" = 1'-0"

D:\esanz\2018\9312018\404\JIM ELLIS CADILLAC_esanz\rev.rvt

Order Plans @

WWW.LDLINE.COM