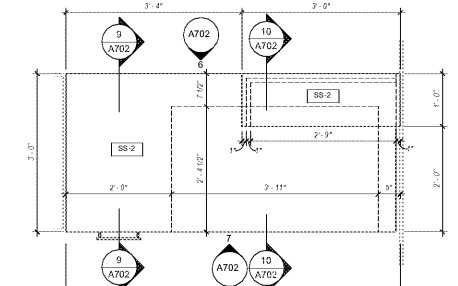
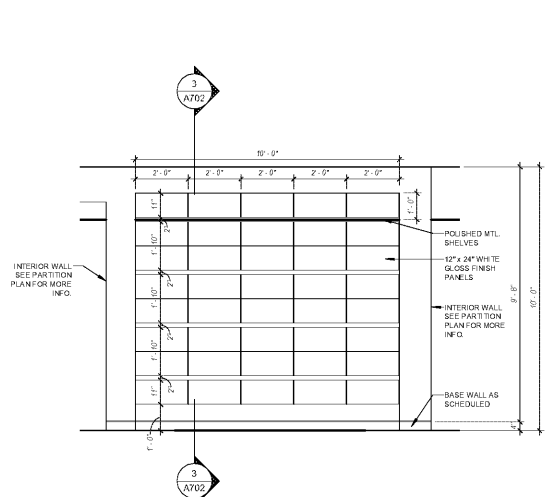


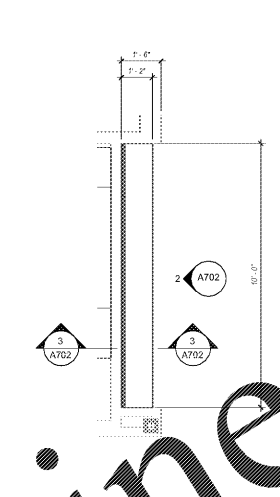
**6 ELEV. 01 - PARTS/CASHIER**  
3/4" = 1'-0"



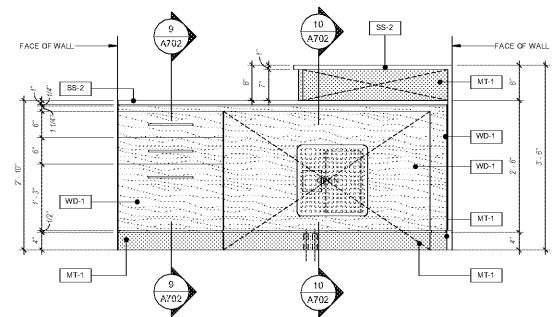
**5 MILLWORK - PARTS/CASHIER**  
3/4" = 1'-0"



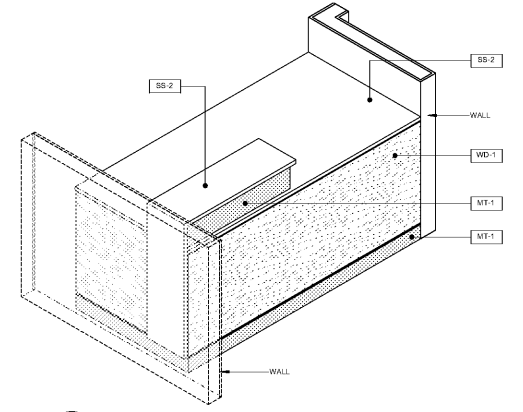
**2 ELEV 01 - MERCHANDISE**  
3/8" = 1'-0"



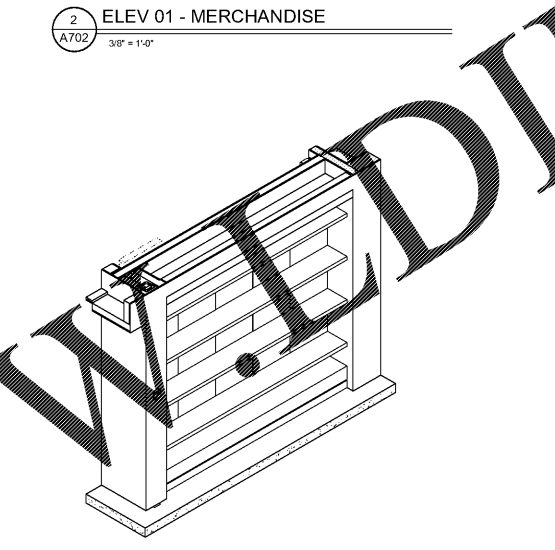
**1 MILLWORK - MERCHANDISE**  
3/8" = 1'-0"



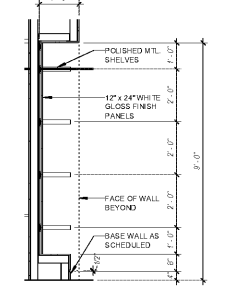
**7 ELEV. 02 - PARTS/CASHIER**  
3/4" = 1'-0"



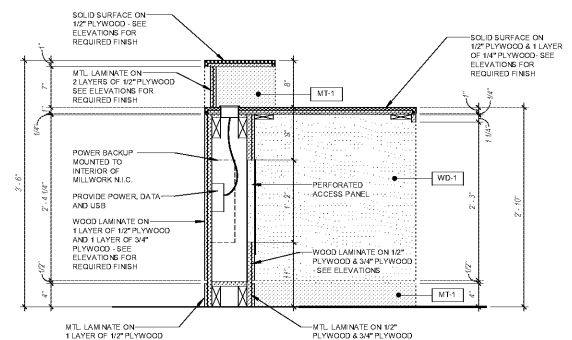
**8 AXONOMETRIC - PARTS/CASHIER**  
A702



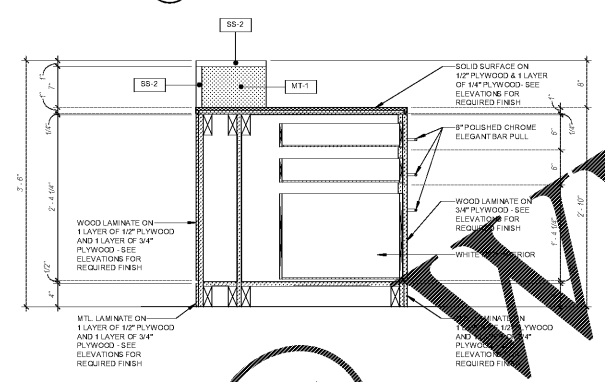
**4 AXONOMETRIC - MERCHANDISE**  
A702



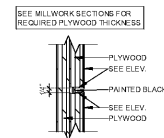
**3 SECT. 01 - MERCHANDISE**  
3/8" = 1'-0"



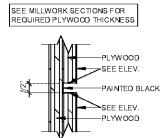
**10 SECT. 02 - PARTS/CASHIER**  
1" = 1'-0"



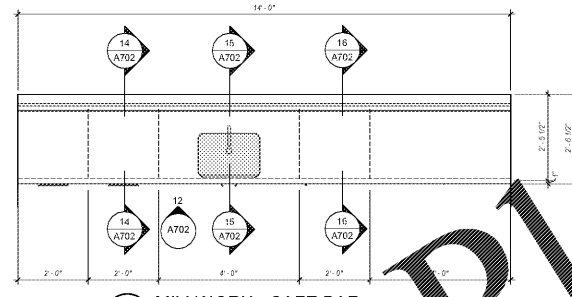
**9 SECT. 01 - PARTS/CASHIER**  
1" = 1'-0"



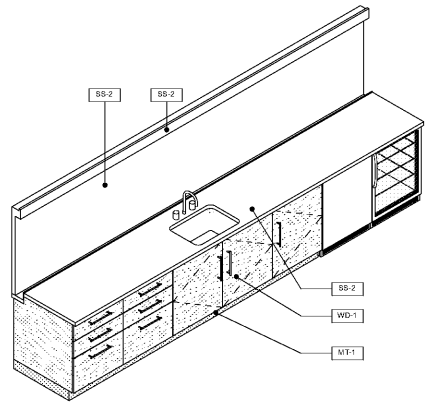
**18 TYP. 1/4\"/>**



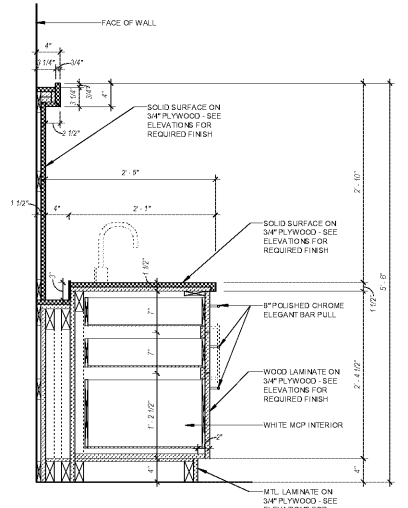
**17 TYP. 1/2\"/>**



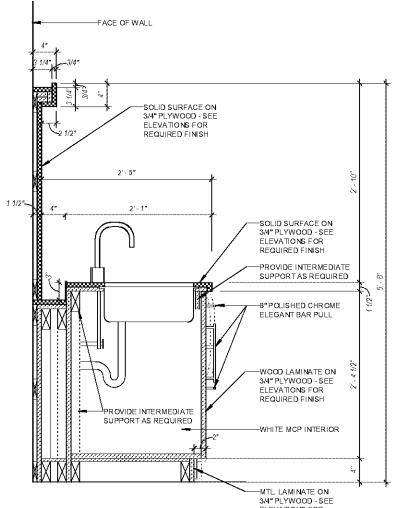
**11 MILLWORK - CAFE BAR**  
1/2" = 1'-0"



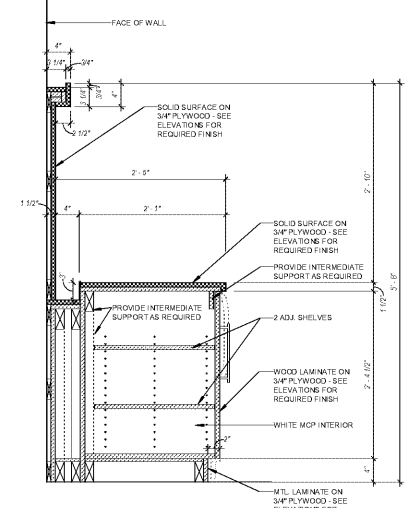
**13 AXONOMETRIC - CAFE BAR**  
A702



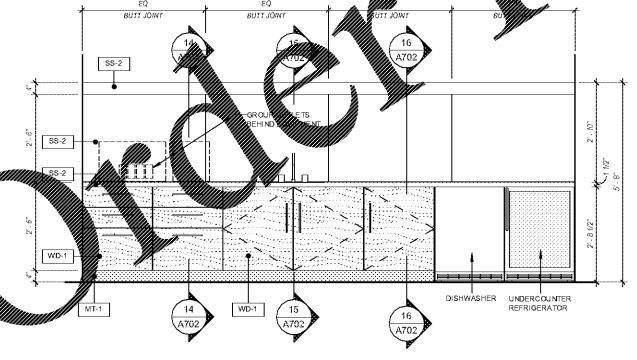
**14 SECT. 01 - CAFE BAR**  
1" = 1'-0"



**15 SECT. 02 - CAFE BAR**  
1" = 1'-0"



**16 SECT. 03 - CAFE BAR**  
1" = 1'-0"



**12 ELEV. 01 - CAFE BAR**  
1/2" = 1'-0"

**ysm DESIGN**  
ARCHITECTURE INTERIOR DESIGN  
1320 Ellsworth Industrial Blvd  
Suite A-100  
Atlanta GA 30318  
404-249-4555  
404-355-6394  
www.ysm-design.com

Signed & Sealed: 31 AUG 2018  
Copyright © 2018 YSM Design, P.C.  
All rights reserved. Reproduction, computer file, text data, notes and other documents and information contained by this design, P.C. are strictly controlled. No copying, scanning, or other reuse without written permission of YSM Design, P.C. is strictly prohibited. No part of this document may be reproduced without the written permission of the original designer.

Rev	Date	Comments

**BID SET**  
Every Contractor or Subcontractor, by submitting a bid for this project, declares that they have reviewed all aspects of this project and have included all work required to provide a complete project that meets all building codes.  
If questions or discrepancies arise based on the plans, notices should be submitted to the building General Contractor as a Request for Information to the bid. These notices should be submitted to the Architect in Atlanta. No consideration will be given after the bid date for issues that could clearly have been assumed during the bidding period.  
Information to all Bidders:  
For more information about this bid, including a list of the most current documents, drawings or addenda, Responsibility Chart, answers to RFI, etc., go to project website. Note this address will be provided to bidders with invitation to bid.  
It is the responsibility of ALL Bidders to become familiar with this set and the additional information that is contained therein. If you do not have access to the internet you MUST contact your General Contractor for this information. No Change Orders will be accepted for not reviewing this information.  
No consideration will be given for Change Order Requests based on any of the following:  
1. Items requiring clarification but not clearly indicated as an exception on the bid.  
2. Items requiring clarification but not submitted to Architect as a request for information during bidding.  
3. Items deemed to be industry standard for a particular system or assembly.  
4. Items that can reasonably be inferred or assumed from contract documents.



Client:  
**JIM ELLIS CADILLAC**  
5880 PEACHTREE BLVD  
ATLANTA, GA 30341  
Project:  
**JIM ELLIS CADILLAC**  
5880 PEACHTREE BLVD  
ATLANTA, GA 30341  
Project Number: 18020  
Drawn By: Author  
Checked By: Checker  
Approved By: Approver  
Sheet Title:  
**MILLWORK**  
Sheet Number:  
**A702**

Order Plans @ www.yasmdesign.com  
JIM ELLIS CADILLAC\_atlanatlac\_rvt  
D:\esmas\12018\9372018-40\