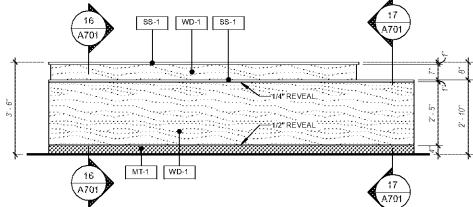


15 AXON - SALES MGR'S DESK & CRENDENZA
A701

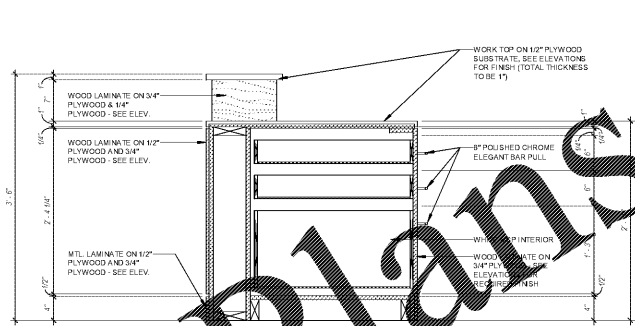


13 ELEV. 03 - SALES MGR'S DESK
A701 3/8" = 1'-0"

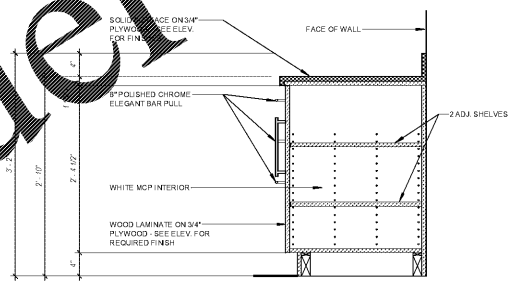
14 ELEV. 04 - SALES MGR'S DESK
A701 3/8" = 1'-0"



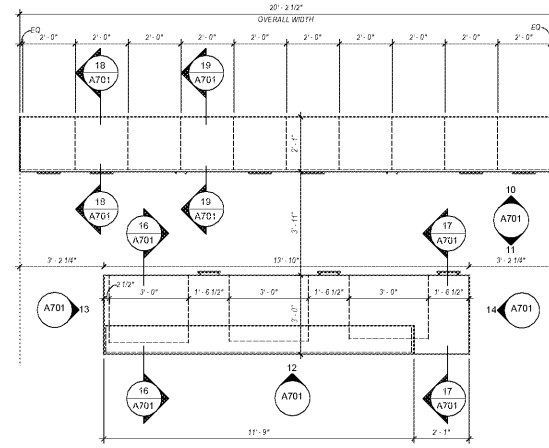
12 ELEV. 03 - SALES MGR'S CRENDENZA
A701 3/8" = 1'-0"



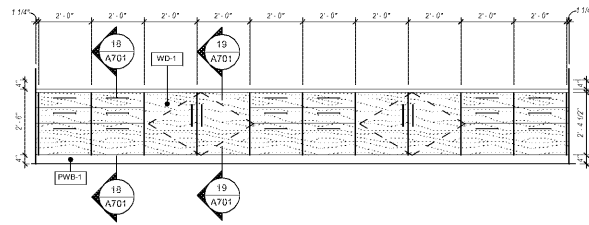
17 SECT. 02 - SALES MGR'S DESK
A701 1" = 1'-0"



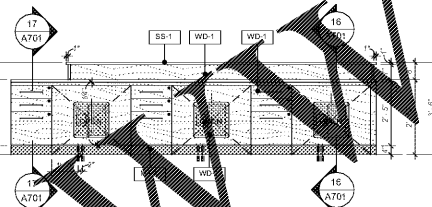
19 SECT. 04 - SALES MGR'S CRENDENZA
A701 1" = 1'-0"



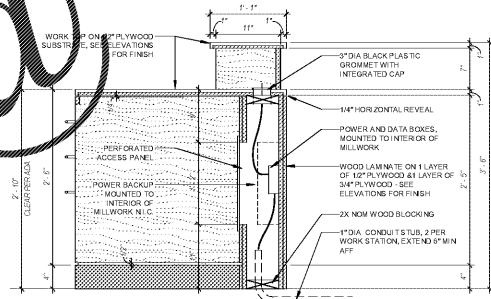
9 MILL. - SERVICE MGR'S DESK & CRENDENZA
A701 3/8" = 1'-0"



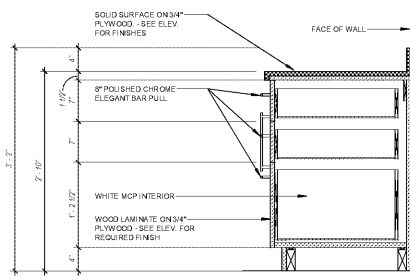
10 ELEV. 01 - SALES MGR'S CRENDENZA
A701 3/8" = 1'-0"



11 ELEV. 04 - SALES MGR'S DESK
A701 3/8" = 1'-0"



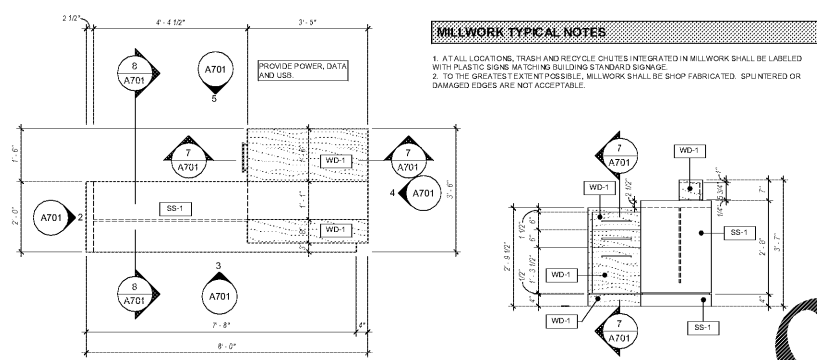
16 SECT. 01 - SALES MGR'S DESK
A701 1" = 1'-0"



18 SECT. 03 - SALES MGR'S CRENDENZA
A701 1" = 1'-0"

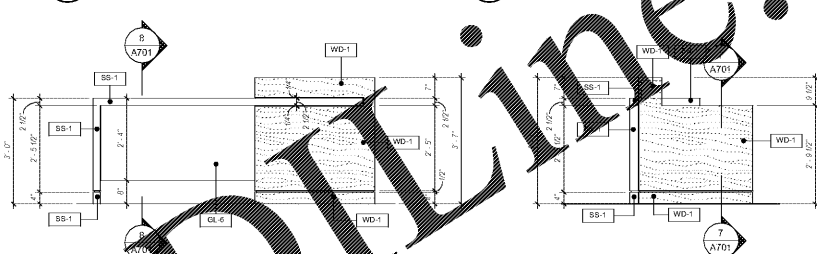
MILLWORK TYPICAL NOTES

1. AT ALL LOCATIONS, TRASH AND RECYCLE CHUTES INTEGRATED IN MILLWORK SHALL BE LABELED WITH PLASTIC SIGNS MATCHING BUILDING STANDARD SIGNAGE.
2. TO THE GREATEST EXTENT POSSIBLE, MILLWORK SHALL BE SHOP FABRICATED. SPLINTERED OR DAMAGED EDGES ARE NOT ACCEPTABLE.



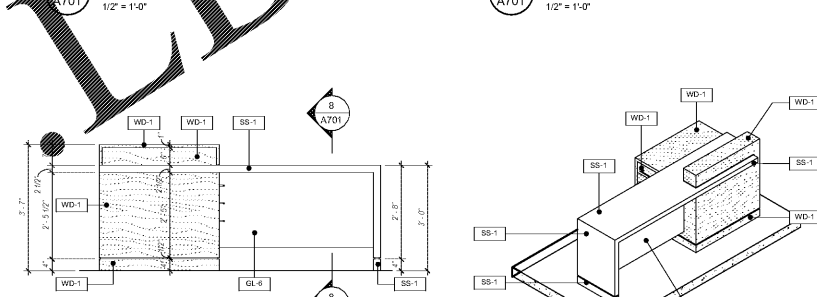
1 MILLWORK - CONCIERGE DESK
A701 1/2" = 1'-0"

2 ELEV. 01 - CONCIERGE DESK
A701 1/2" = 1'-0"



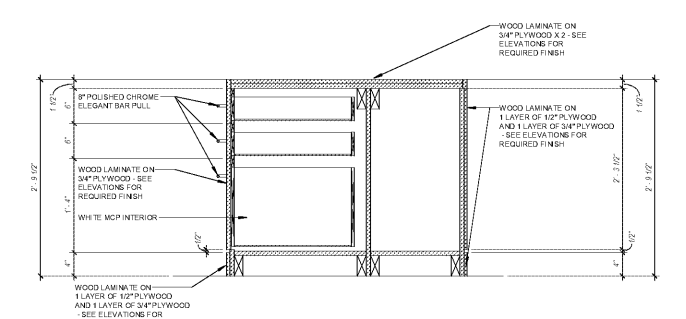
3 ELEV. 02 - CONCIERGE DESK
A701 1/2" = 1'-0"

4 ELEV. 03 - CONCIERGE DESK
A701 1/2" = 1'-0"

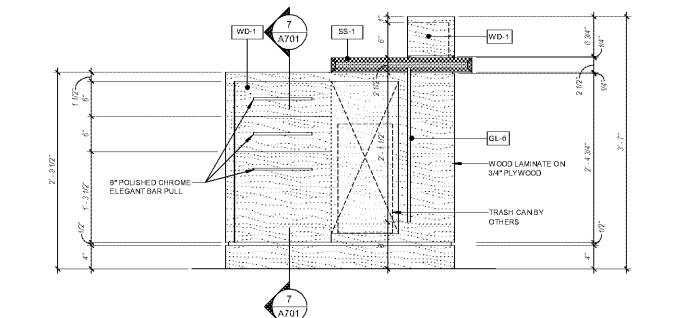


5 ELEV. 04 - CONCIERGE DESK
A701 1/2" = 1'-0"

6 AXONOMETRIC - CONCIERGE DESK
A701



7 SECTION 01 - CONCIERGE DESK
A701 1" = 1'-0"



8 SECTION 02 - CONCIERGE DESK
A701 1" = 1'-0"



Signed & Sealed: 31 AUG 2018

Rev	Date	Comments

BID SET

Every Contractor or Subcontractor, by submitting a bid for this project, certifies that they have reviewed all aspects of this project and have included all work required to provide a complete project that meets all building codes.

If questions or discrepancies are found between trades, these should be submitted by the building General Contractor as a Request for Information on form back and forth. These clarifications will be issued to all Bidders in Abstract. No consideration will be given after the bid date for issues that could clearly have been assumed during the bidding process.

Information to all Bidders:

For more information about this bid, including a list of the most current documents, instructions to Bidders, Responsibility Chart, answers to RFI, etc., go to project website. Note this address will be provided to bidders with invitation to bid.

It is the responsibility of ALL Bidders to become familiar with this bid and the additional information that is contained therein. If you do not have access to the internet you MUST contact your General Contractor for this information. NO CHANGE ORDERS will be accepted for not reviewing this information.

No consideration will be given for Change Order Requests based on any of the following:

1. Items requiring clarification but not clearly indicated as an exception on the bid.
2. Items requiring clarification but not submitted to Architect as a request for information during bidding.
3. Items deemed to be industry standard for a particular system or assembly.
4. Items that can reasonably be inferred or assumed from contract documents.

PRO BUILDING SYSTEMS

DESIGN BUILD CONTRACTORS

Client:
JIM ELLIS CADILLAC

5880 PEACHTREE BLVD
ATLANTA, GA 30341

Project:
JIM ELLIS CADILLAC

5880 PEACHTREE BLVD
ATLANTA, GA 30341

Project Number: 18020
Drawn By: Author
Checked By: Checker
Approved By: Approver

Sheet Title:
MILLWORK

Sheet Number:
A701

Order Plans
 JIM ELLIS CADILLAC, atlantacad.com
 8/31/2018 4:00 PM