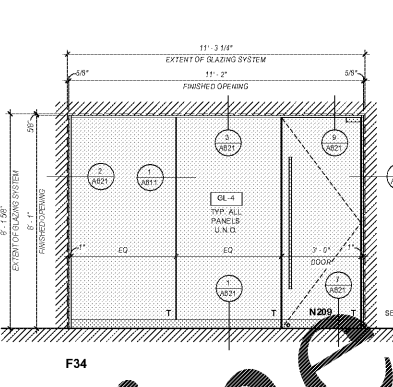
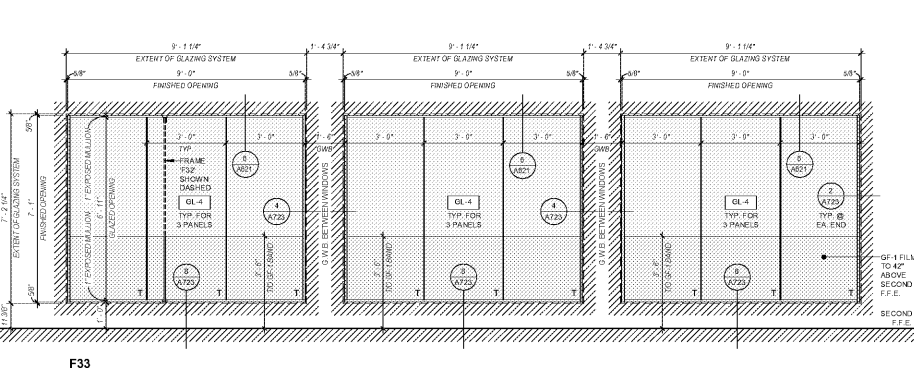
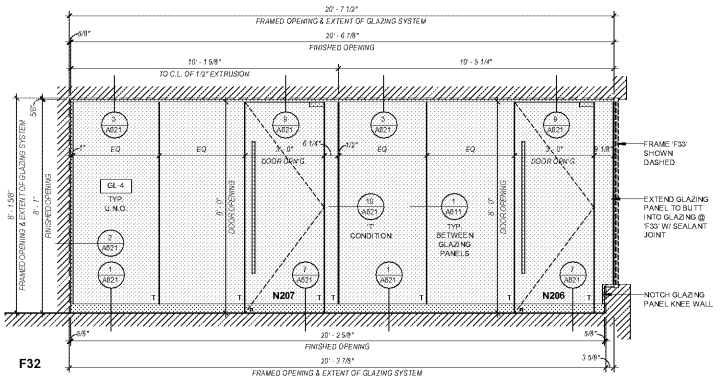


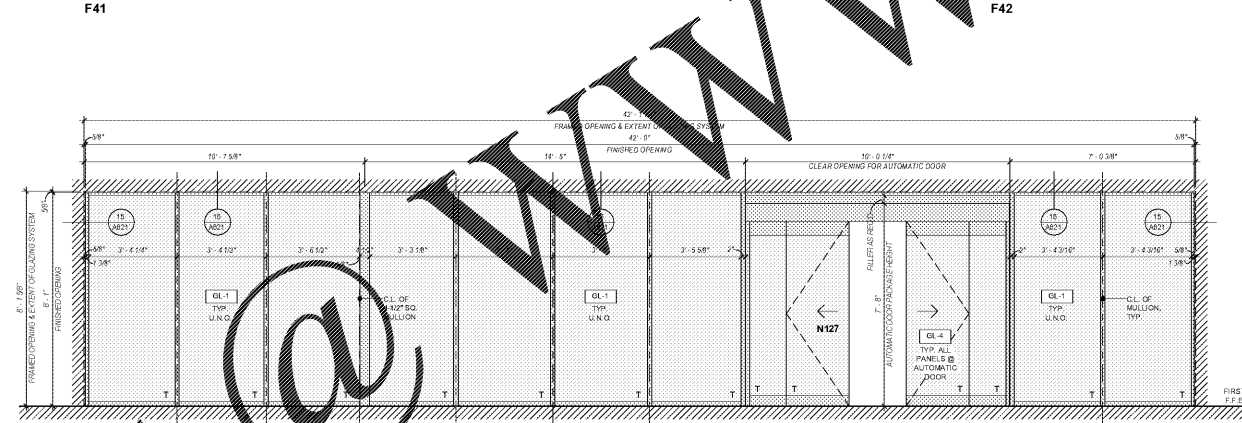
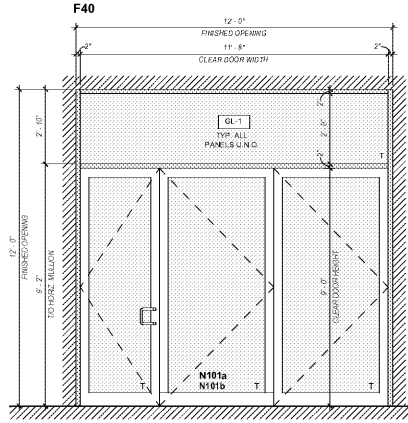
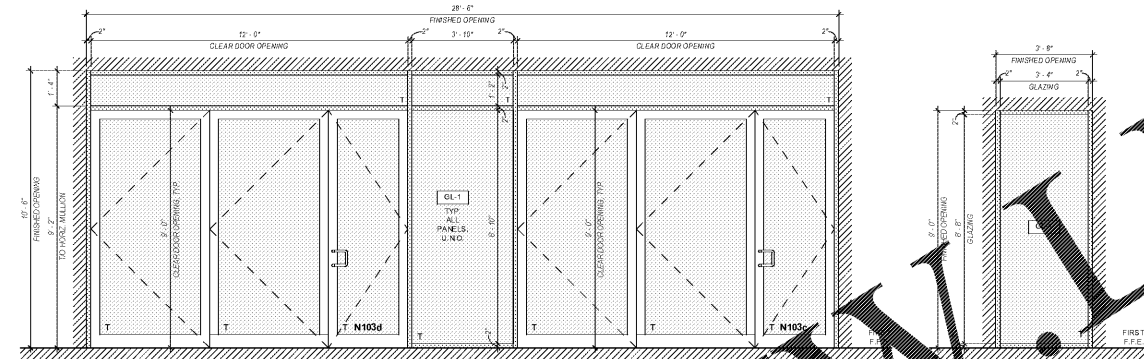
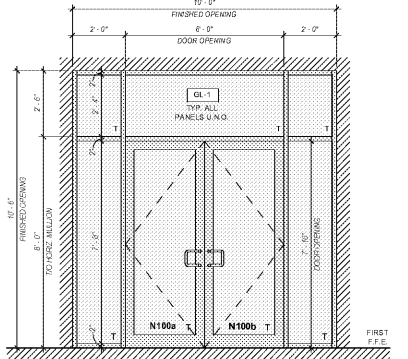
BUTT GLAZED GLASS FRAMES
F32-F34

SEE FINISH SCHEDULE FOR FINISHES OF PARTITION PANELS.
SEE NOTE IN WINDOW ELEVATION FOR WINDOW FRAME FINISHES.
USE 1/2" TEMPERED CLEAR GLASS UNLESS OTHERWISE NOTED.



ALUMINUM STOREFRONT FRAMES
F40-43

BASIS OF DESIGN: KAWNEER TRIFAB 451T



GLAZING NOTES

EXTERIOR GLAZING SYSTEMS MUST INDICATE WIND ORDNING USED FOR DESIGN CALCULATIONS IN ALL JURISDICTIONS. SEE BELOW FOR ADDITIONAL NOTES IN FLORIDA. ENGINEERING FOR CURTAIN WALLS AND SHOWER DOORS MAY, AT THE DISCRETION OF THE AUTHORITY HAVING JURISDICTION, OBTAIN A PERMIT FROM THE AUTHORITY HAVING JURISDICTION.

GLAZING SCHEDULE

TAG	COLOR FINISH	MATERIAL	BASIS OF DESIGN
GL-1	CLEAR LOW-E	1" INSULATED UNIT	VITRO ARCHITECTURAL GLASS SOLARBAN 72 W/ 5% TINT PHIRE GLASS K1-TL SINC-330
GL-2	CLEAR	1/2" GLASS	LOCAL GLASS SUPPLIER
GL-3	LAMINATED	41-81/8" OVERALL THICKNESS W/ 1/4" INTERLAYER & OUTER LAYERS & CHALLENGE 8% OF INTERLAYER	MCGRORY GLASS 81% LAMINATED - GETD 172 CONTACT: BRIANNA HAZTASI (850) 379 3205 BRIANNA@MCGRORY.COM
GL-4	CLEAR	1/2" TEMPERED GLASS	1/2" TEMPERED GLASS
GF-1	FROSTED FILM	TRANSLUCENT POLYESTER FILM APPLY TO 42\"/>	

NOTE: ALL EXTERIOR GLAZING MUST MEET STATE ENERGY CODES, EITHER BY MEETING PRESCRIPTIVE VALUES FOR U-VALUE AND SHGC, OR BY MEETING PERFORMANCE REQUIREMENTS SET FORTH IN THIS PROJECT'S ENERGY ANALYSIS REPORT.

T = TEMPERED
ALL INTERNAL GLASS TO BE LOW-IRON / CLEAR

BID SET

Every Contractor or Subcontractor, by submitting a bid for this project, certifies that they have reviewed all aspects of this project and have included all work required to provide a complete project that meets all building codes.

Information or discrepancies are based on information provided to the Bidder. For more information about this bid, including a list of the most current documents, instructions to bidders, Responsibility Chart, answers to RFI, etc., go to project website. Note: this address will be provided to address with invitation to bid.

It is the responsibility of ALL bidders to become familiar with this bid and the additional information that is contained therein. If you do not have access to the internet you MUST contact your General Contractor for this information. No Change Orders will be accepted for not reviewing this information.

No consideration will be given for Change Order Requests based on any of the following:

- Items requiring clarification but not clearly indicated as an exception on the bid.
- Items requiring clarification but not submitted to Architect as a request for information during bidding.
- Items deemed to be industry standard for a particular system or assembly.
- Items that can reasonably be inferred or assumed from contract documents.



Client:
JIM ELLIS CADILLAC
5880 PEACHTREE BLVD
ATLANTA, GA 30341

Project:
JIM ELLIS CADILLAC
5880 PEACHTREE BLVD
ATLANTA, GA 30341

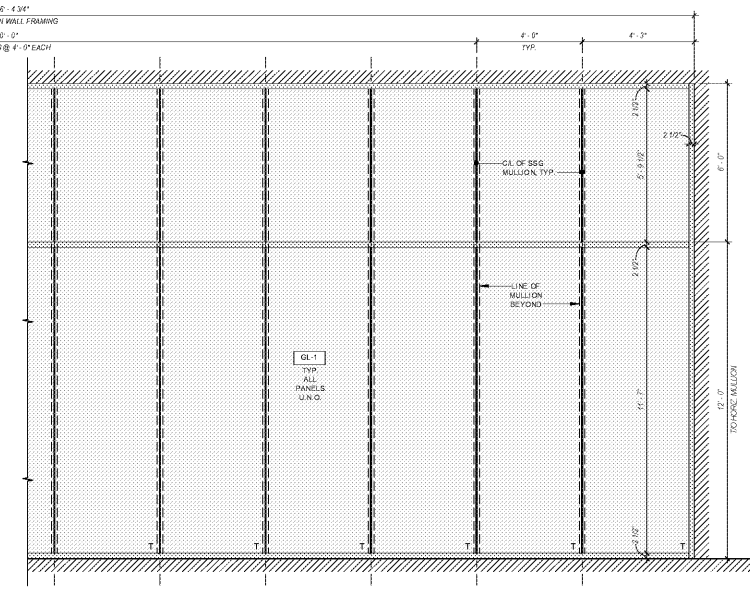
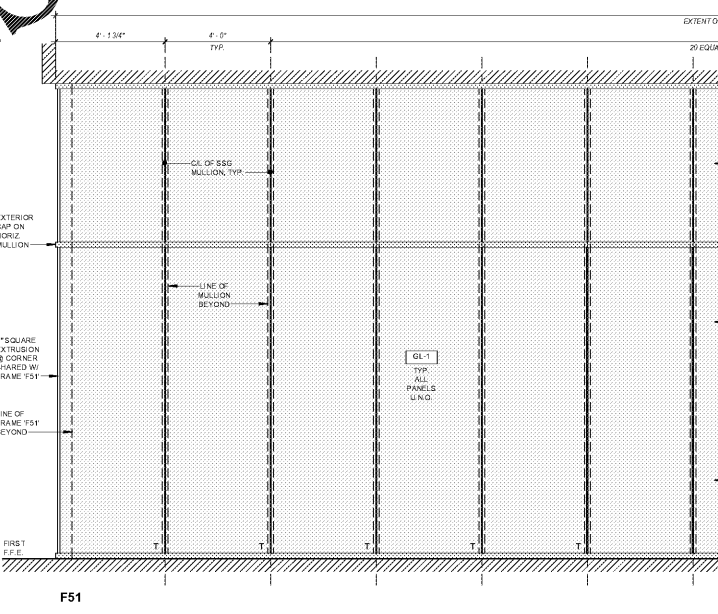
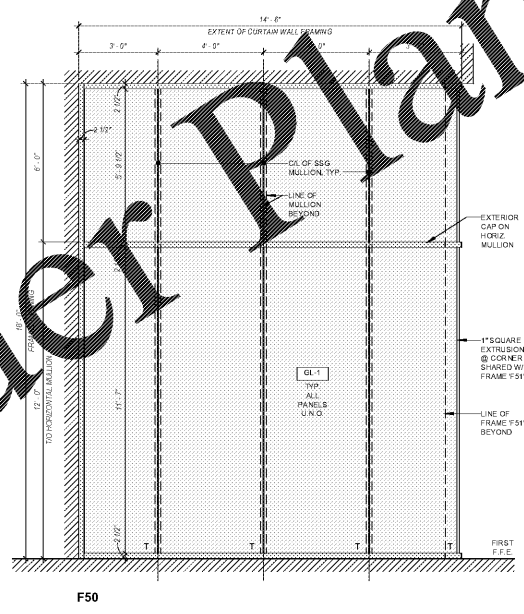
Project Number: 18020
Drawn By: TFL
Checked By: ES / AEA
Approved By: YSM

Sheet Title:
FRAME ELEVATIONS

Sheet Number:
A612

ALUMINUM CURTAIN WALL
F50-F51

BASIS OF DESIGN: KAWNEER 1800 SERIES 2



JIM ELLIS CADILLAC, architect ny
D:\esanchez\2018\9372018-4000\A612.dwg

Order Plans

ysm DESIGN
5875 AUTUMN DRIVE, SUITE 100, FORT LAUDERDALE, FL 33309

1320 Ellsworth Industrial Blvd
Suite A-100
Atlanta GA 30318
404-249-4555
404-355-6394

www.ysm.com

PROFESSIONAL ENGINEER
STATE OF GEORGIA
NO. 10000
JIM ELLIS

Signed & Sealed: 31 AUG 2018