

ROOF DETAIL NOTES

1. DETAILS SHOWN HERE ARE FOR REFERENCE ONLY. USE SYSTEM MANUFACTURER'S DETAILS AS REQUIRED TO MAINTAIN SYSTEM WARRANTIES.
2. WHEN APPLICABLE, USE FLORIDA PRODUCT APPROVAL OR WAM DADE NDA DETAILS IN LIEU OF THE DETAILS SHOWN HERE.
3. LOW SLOPE EDGE DETAILING MUST MEET ANS/APSI ES-1 REQUIREMENTS.
4. ALL FASTENERS INTO PRESSURE TREATED LUMBER SHALL BE STAINLESS STEEL.

ysm DESIGN
 1320 Ellsworth Industrial Blvd
 Suite A-100
 Atlanta GA 30318
 404-249-4555
 404-355-6300
 www.ysmdesign.com

Signed & Sealed: 31 AUG 2018
 Copyright © 2018 YSM Design, P.C.

Rev	Date	Comments

BID SET

Every Contractor or Subcontractor, by submitting a bid for this project declares that they have reviewed all aspects of this project and have included all work required to provide a complete project that meets all building codes.

Information to all Bidders: For more information about this bid, including a list of the most current documents, instructions to bidders, Responsibility Chart, answers to RFI, etc., go to project website. Note this address will be provided to bidders with invitation to bid.

It is the responsibility of ALL Bidders to become familiar with this bid and the additional information that is contained herein. If you do not have access to the internet you MUST contact your General Contractor for this information. NO Change Orders will be accepted for not reviewing this information.

No consideration will be given for Change Order Requests based on any of the following:
 1. Items requiring clarification but not clearly indicated as an exception on the bid.
 2. Items requiring clarification but not submitted to Architect as a request for information during bidding.
 3. Items deemed to be industry standard for a particular system or assembly.
 4. Items that can reasonably be inferred or assumed from contract documents.



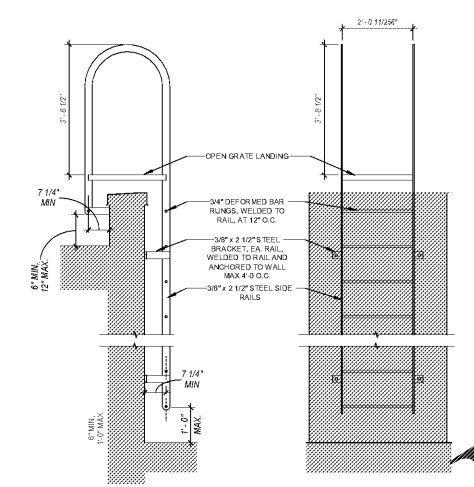
Client:
JIM ELLIS CADILLAC
 5880 PEACHTREE BLVD
 ATLANTA, GA 30341

Project:
JIM ELLIS CADILLAC
 5880 PEACHTREE BLVD
 ATLANTA, GA 30341

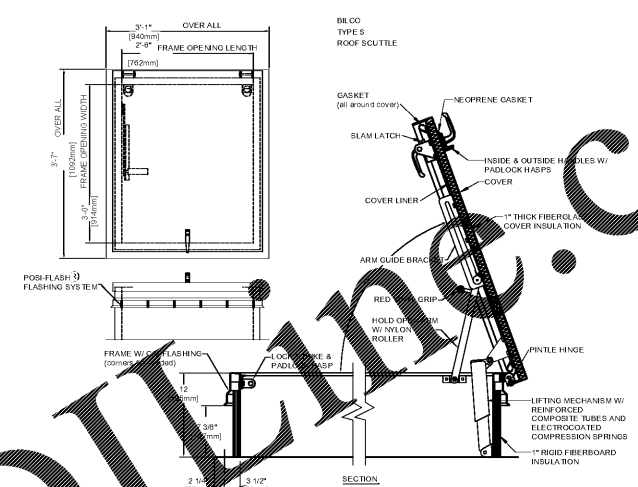
Project Number: 18020
 Drawn By: Author
 Checked By: Checker
 Approved By: Approver

Sheet Title:
ROOF DETAILS

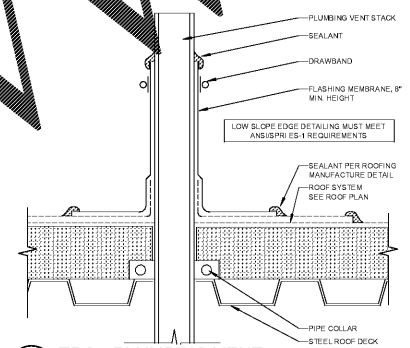
Sheet Number:
A591



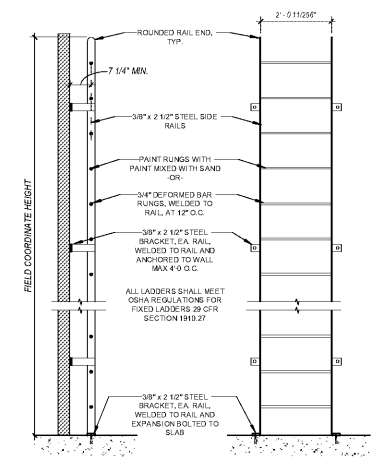
1 ROOF LADDER - STRADDLE
 A591 1/2" = 1'-0"



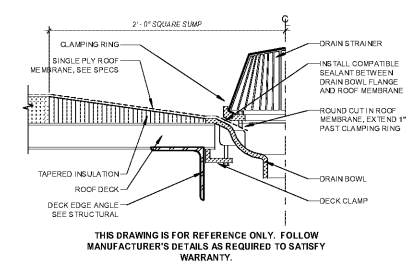
3 ROOF HATCH
 A591 3/4" = 1'-0"



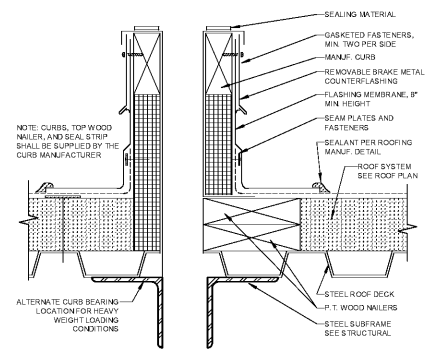
10 TPO - PLUMBING VENT
 A591 3" = 1'-0"



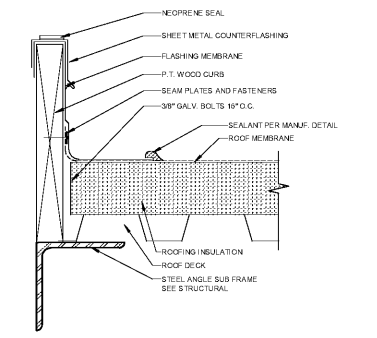
2 ROOF LADDER - STRAIGHT
 A591 1/2" = 1'-0"



9 TPO - HUB DRAIN
 A591 3" = 1'-0"



11 TPO - MANUF. CURB
 A591 3" = 1'-0"



12 TPO - SITE MADE CURB
 A591 3" = 1'-0"

D:\esanz\2018\9312018 4\Jim Ellis CADILLAC_eplan\set.rvt
 9/31/2018 4:11 AM

Order Plans @ WWW.LDILLIAN.COM

THIS DRAWING IS FOR REFERENCE ONLY. FOLLOW MANUFACTURER'S DETAILS AS REQUIRED TO SATISFY WARRANTY.