



Signed & Sealed: 31 AUG 2018

Copyright (c) 2018 YSM Design, P.C.  
All rights reserved. Specifications, computer files, text data, notes and other documents and information prepared by YSM Design, P.C. are the property of YSM Design, P.C. and shall remain confidential. No reproduction or distribution is permitted without the written consent of YSM Design, P.C. If you are not the intended recipient, please do not disseminate or act on the information contained herein.

Rev	Date	Comments

**BID SET**

Every Contractor or Subcontractor, by submitting a bid for this project, certifies that they have reviewed all aspects of this project and have included all work required to provide a complete project that meets all building codes.

Requests or discussions with third parties, such as vendors, should be submitted to the building General Contractor as a Request for Information on their bids. These communications will be directed to the Bidder in Advance. No consideration will be given after the bid date for issues that could clearly have been assessed during the bidding period.

Information to all Bidders: For more information about this bid, including a list of the most current documents, instructions to bidders, Responsibility Chart, answers to RFI, etc., go to project website. Note the address will be provided to bidders with invitation to bid.

It is the responsibility of ALL Bidders to become familiar with this bid and the additional information that is contained herein. If you do not have access to the internet you MUST contact your General Contractor for this information. No Change Orders will be accepted for not reviewing this information.

No consideration will be given for Change Order Requests based on any of the following:

- Items requiring clarification but not clearly indicated as an exception on the bid.
- Items requiring clarification but not submitted to Architect as a request for information during bidding.
- Items deemed to be industry standard for a particular system or assembly.
- Items that can reasonably be inferred or assumed from contract documents.



Client:  
**JIM ELLIS  
CADILLAC**

5880 PEACHTREE BLVD  
ATLANTA, GA 30341

Project:  
**JIM ELLIS  
CADILLAC**

5880 PEACHTREE BLVD  
ATLANTA, GA 30341

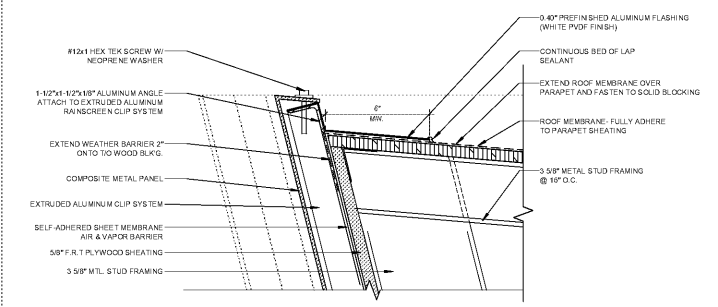
Project Number: 18020  
Drawn By: Author  
Checked By: Checker  
Approved By: Approver

Sheet Title:  
**ACM RAIN SCREEN  
DETAILS**

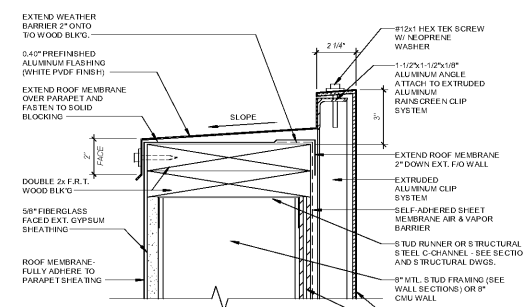
Sheet Number:  
**A503**

**C.M.P. NOTES**

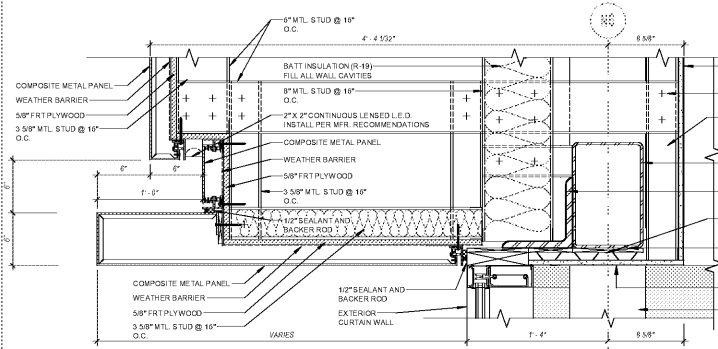
- SHEET TYPE WEATHER BARRIERS, SUCH AS TYVEK, ARE NOT ACCEPTABLE BEHIND RAIN SCREEN PANEL SYSTEMS. THE WEATHER BARRIER SHALL BE FULLY APPLIED OR EPDM SHEET MEMBRANE AND SHALL BE "SELF HEALING".
- IN A RAINSCREEN SYSTEM, INSTALLATION SHALL BE EXECUTED SO AS TO PROVIDE A WEATHER TIGHT WALL PRIOR TO PANEL INSTALLATION. ALL WEATHER MEMBRANE JOINTS AND CORNERS SHALL BE SEALED PER THE WEATHER BARRIER MANUFACTURER'S INSTRUCTIONS. ALL TRANSITIONS FROM THE WEATHER BARRIER TO ADJACENT MATERIALS SHALL BE SEALED SO AS TO PROVIDE A CONTINUOUS WEATHER SYSTEM.
- INSTALLED SYSTEM SHALL UTILIZE CONTINUOUS ALUMINUM ANGLE EXTRUSIONS AT THE PERIMETER TO PROVIDE CONTINUOUS SEALANT BOUNDARY WITH ADJACENT MATERIALS. DO NOT SEAL THE PERIMETER METAL PANELS DIRECTLY TO ADJACENT MATERIALS IN A RAINSCREEN SYSTEM.



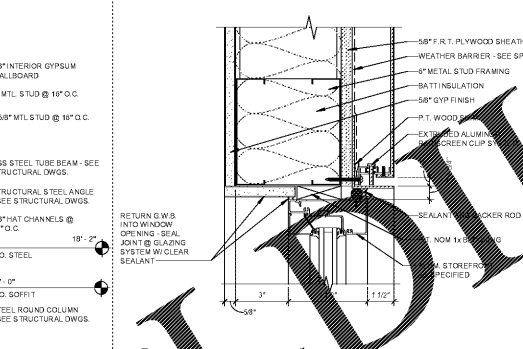
14 CMP COPING @ CADILLAC FACADE  
A503 3" x 1'-0"



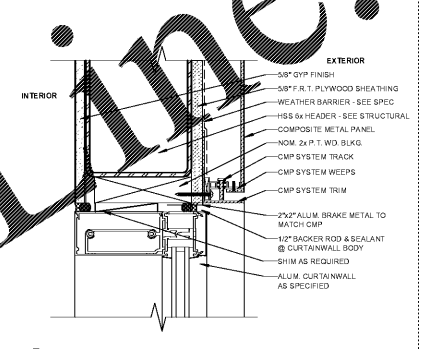
7 CMP COPING @ STUD  
A503 3" x 1'-0"



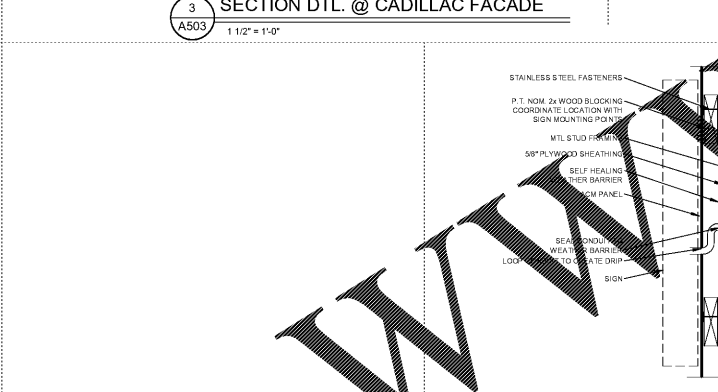
3 SECTION DTL. @ CADILLAC FACADE  
A503 1 1/2" x 1'-0"



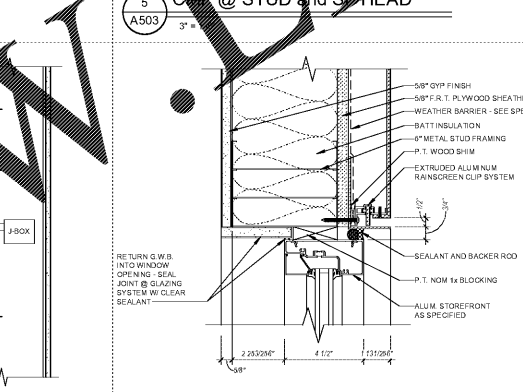
5 CMP @ STUD and SF HEAD  
A503 3" x 1'-0"



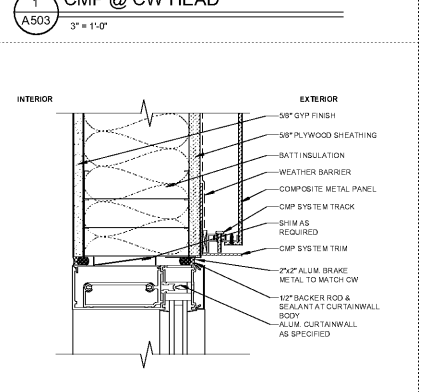
1 CMP @ CW HEAD  
A503 3" x 1'-0"



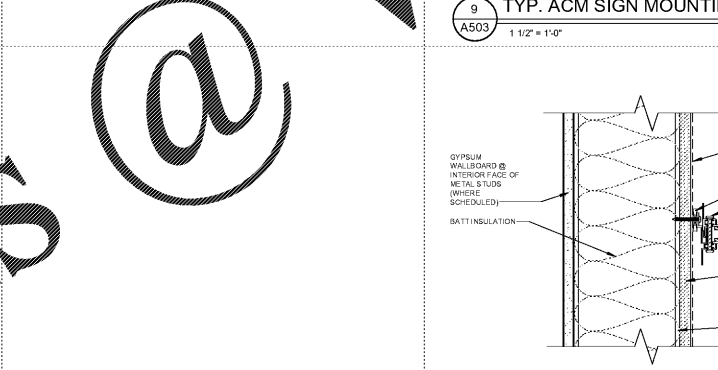
9 TYP. ACM SIGN MOUNTING  
A503 1 1/2" x 1'-0"



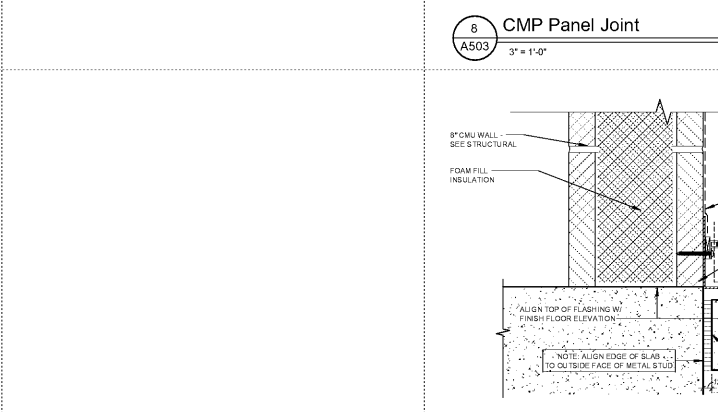
6 CMP @ STUD and SF JAMB  
A503 3" x 1'-0"



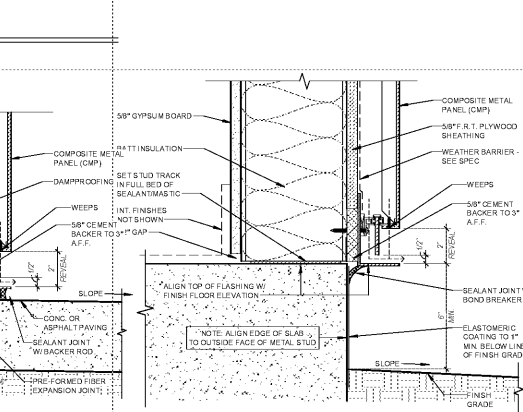
2 CMP @ CW JAMB  
A503 3" x 1'-0"



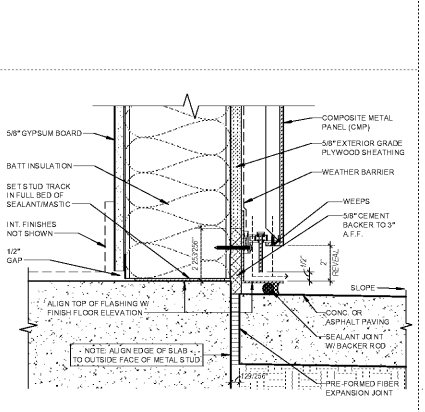
8 CMP Panel Joint  
A503 3" x 1'-0"



19 CMP @ CMU & PAVING  
A503 3" x 1'-0"



16 CMP on STUD @ GRADE  
A503 3" x 1'-0"



17 CMP @ STUD and PAVING  
A503 3" x 1'-0"

D:\esmith\2018\09172018\CADILLAC\_essmith.rvt  
JIM ELLIS CADILLAC\_essmith.rvt  
8/31/2018 3:07 PM

Order Plans @

WWW.DOWNLOADLINE.COM

HEAD JAMBS SILLS FLOOR