



Signed & Sealed: 31 AUG 2018

Copyright © 2018 YSM Design, P.C.  
 All rights reserved. Reproduction, copying, distribution, or use in any form without the written permission of YSM Design, P.C. is strictly prohibited. This drawing is not to be reproduced or used in any way without the written permission of YSM Design, P.C. or the architect of record. All other drawings are the property of YSM Design, P.C. and shall remain confidential.

Rev	Date	Comments

**BID SET**

Every Contractor or Subcontractor, by submitting a bid for this project, certifies that they have reviewed all aspects of this project and have included all work required to provide a complete project that meets all building codes.

Requests or discrepancies are based on the information provided in the bid set. Requests for information on bid items are due 10 days prior to the bid opening. No consideration will be given after the bid date for issues that could clearly have been assumed during the bidding process.

Information to all Bidders: For more information about this bid, including a list of the most current drawings, visitations to Bidders, Responsibility Chart, answers to RFI, etc., go to project website. Note: this address will be provided to bidders with invitation to bid.

It is the responsibility of all bidders to become familiar with this bid set and the additional information that is contained herein. It is the responsibility of the bidder to verify the accuracy of the information provided in the bid set. No change orders will be accepted for additional information.

No consideration will be given for Change Order Requests based on any of the following:

- Items requiring clarification but not clearly indicated as an exception on the bid set.
- Items requiring clarification but not submitted to Architect as a request for information during bidding.
- Items deemed to be industry standard for a particular system or assembly.
- Items that can reasonably be inferred or assumed from contract documents.

PRO BUILDING SYSTEMS  
 DESIGN BUILD CONTRACTORS

Client:  
**JIM ELLIS CADILLAC**

5880 PEACHTREE BLVD  
 ATLANTA, GA 30341

Project:  
**JIM ELLIS CADILLAC**

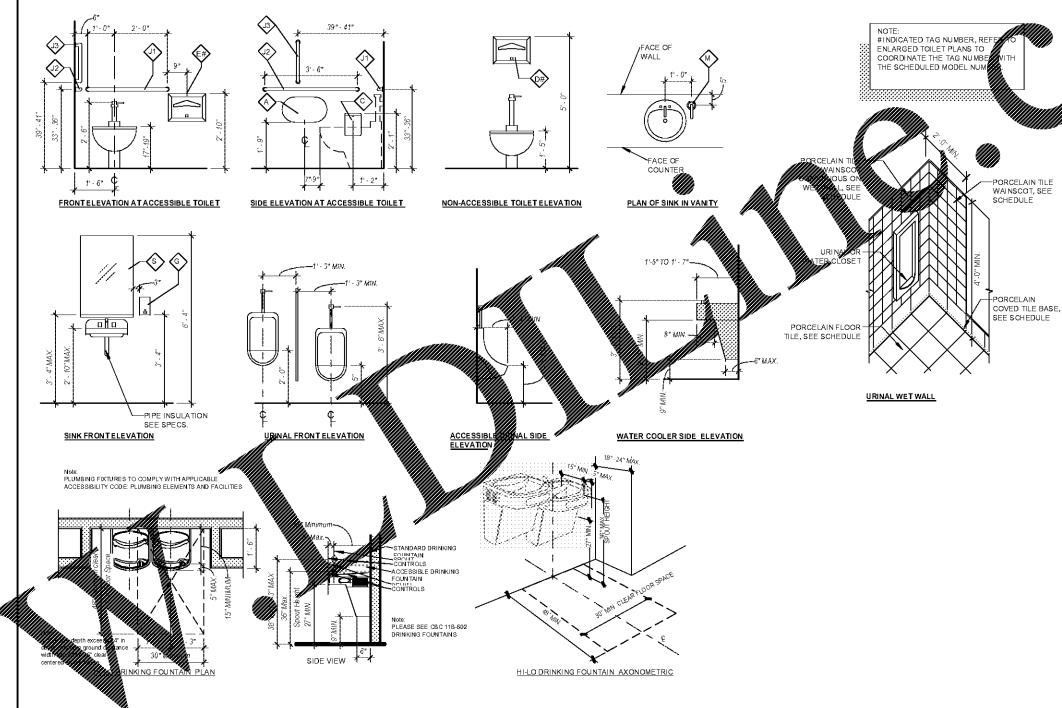
5880 PEACHTREE BLVD  
 ATLANTA, GA 30341

Project Number: 18020  
 Drawn By: ES / TFL  
 Checked By: AEA  
 Approved By: YSM

Sheet Title:  
**TECH RESTROOMS**

Sheet Number:  
**A403**

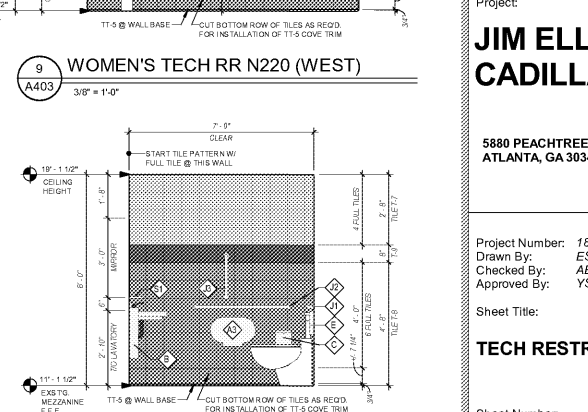
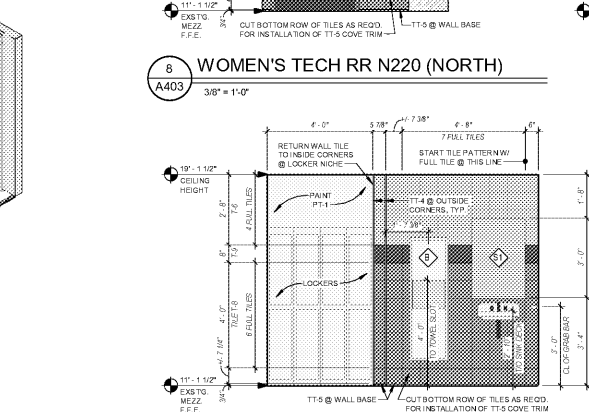
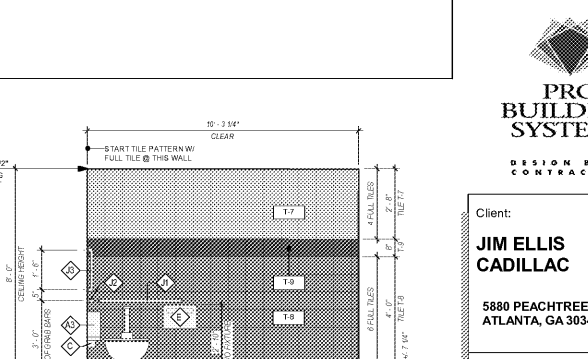
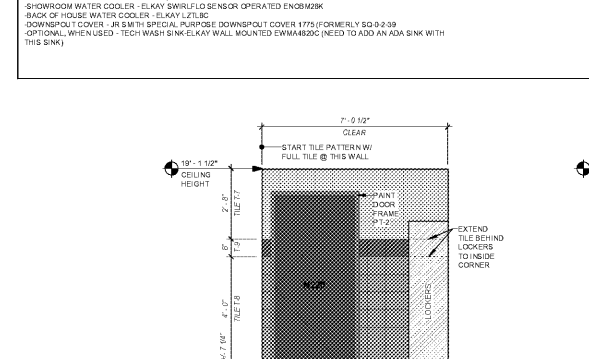
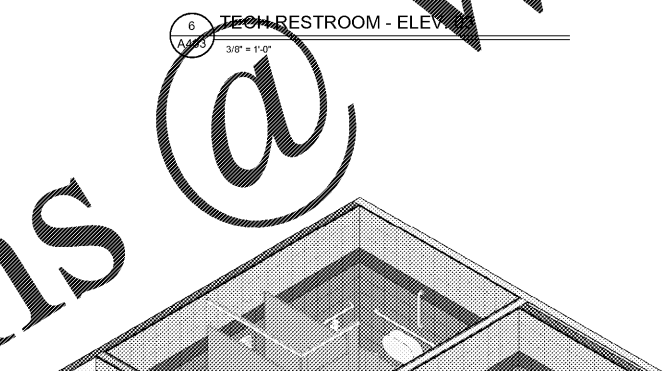
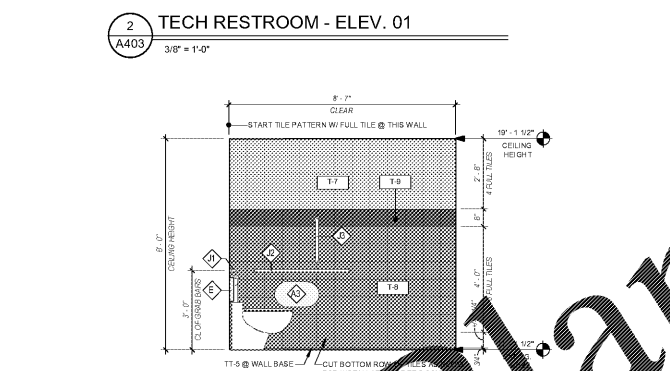
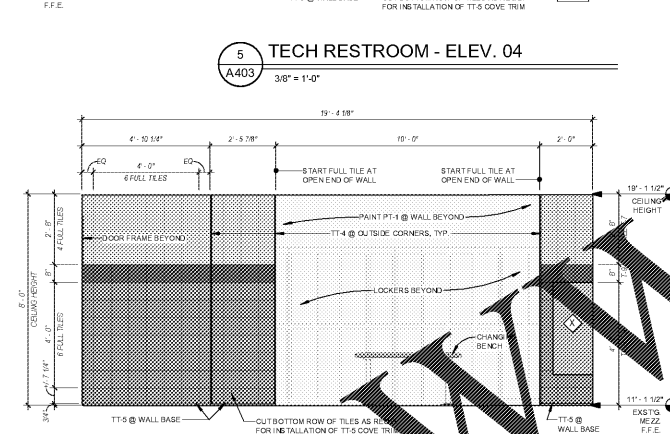
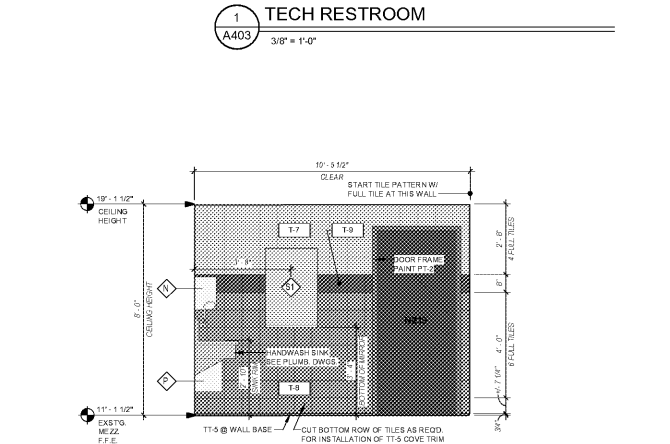
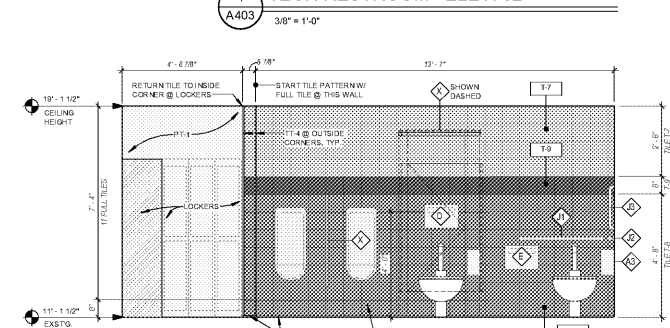
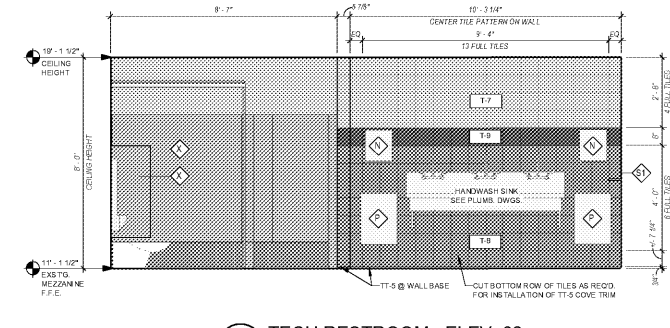
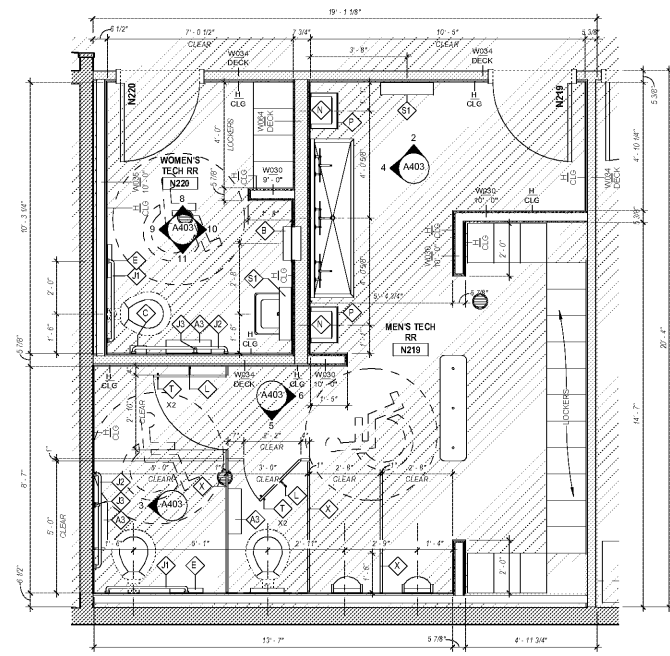
CUSTOMER CONTACT RESTROOMS			TECH RESTROOMS			COMMON ACCESSORIES		
TAG DESCRIPTION	BOBICK BASIS OF DESIGN	MOUNTING	TAG DESCRIPTION	BOBICK BASIS OF DESIGN	MOUNTING	TAG DESCRIPTION	BOBICK BASIS OF DESIGN	MOUNTING
11 WALL MOUNTED TISSUE DISPENSER	B-4286	SURFACE	11 WALL MOUNTED SOAP DISPENSER	B-8845	SURFACE	11 LEAN BAY NAPkin DISPOSAL	B-2725	SURFACE
22 WALL MOUNTED TISSUE DISPENSER	B-4086	RECESSED	22 WALL MOUNTED SOAP DISPENSER	B-3088	SURFACE	22 TOILET SEAT COVER DISPENSER	B-4221	SURFACE
81 PAPER TOWEL DISPENSER / WASTE RECEPTACLE COMBO	B-4044	RECESSED	81 WASTE RECEPTACLE	B-275	SURFACE	81 TOILET SEAT COVER DISPENSER - ADA	B-4223	SURFACE
82 HAND DRYER	8Y-DWNR	SURFACE	81 24" x 34" MIRROR W/ SHELF	B-3082	SURFACE	82 30" GAS BAR	B-2006	30" HORIZONTAL
11 BABY CHANGING STATION	KH919	RECESSED				82 40" GAS BAR	B-2006	30" HORIZONTAL
38 SOAP DISPENSER	B-3088	RECESSED				82 40" GAS BAR	B-2006	30" HORIZONTAL
52 PLATE GLASS MIRROR	GLASS VENDOR	SURFACE				82 COAT HOOK / SLUMPER	B-212	PARTITION DOOR
						82 STALL DOOR FULL HANDLE - HAFBLE	B-8846	PARTITION DOOR
						82 TOILET PARTITION	B-2006	FLOOR (BRADLEY)
						82 SOAP HOLDER W/ SHELF	B-2248	SURFACE



**GENERAL TOILET NOTES**

FLUSH CONTROLS @ ACCESSIBLE WATER CLOSETS SHALL BE MOUNTED ON WIDE SIDE AND NOT EXCEED 48" A.F.F.  
 TOILET CLEARANCES @ TOILET SINKS SHALL BE 8" MIN.  
 ALL CONTROLS AT TOILET ACCESSORIES SHALL BE LOCATED NO HIGHER THAN 48" A.F.F.  
 ALL CONSTRUCTION IS TO COMPLY WITH LOCAL ACCESSIBILITY STANDARDS AND CODES. IF A CONFLICT EXISTS BETWEEN THE ACCESSIBILITY STANDARDS AND DRAWINGS, THE ACCESSIBILITY STANDARDS SHALL PREVAIL. CONTRACTOR SHALL NOTIFY ARCHITECT OF ANY CONFLICT PRIOR TO MAKING CHANGES IN FIELD.

UNLESS NOTED OTHERWISE (BASIS OF DESIGN):  
 CONCEALED FLUSHMETER FOR TOILETS SHALL BE SLOAN ROYAL OPTIMA 152 L 2015 S 7" NO SWH  
 CONCEALED FLUSHMETER FOR URINALS SHALL BE SLOAN ROYAL OPTIMA 150 S 125 S SWS SWH  
 RECTANGULAR LAVATORY SINK - AMERICAN STANDARD "TUBBY" NEW COLLECTOR  
 LAVATORY FAUCET - SLOAN OPTIMA FAU 300 HARDWHEED TOUCHLESS  
 SINK SINK - JUST ICE SINK-ADA-BBA-051 14" SQUARE SINGLE HANDLE FAUCET  
 SHOWROOM WATER COOLER - ELKAY SWRFLD SENSOR OPERATED ENDSINK  
 BACK OF HOUSE WATER COOLER - ELKAY LFLB  
 DOWNPOUT COVER - JR SWH SPECIAL PURPOSE DOWNPOUT COVER 1773 (FORMERLY SQ 0-2-09)  
 OPTIONAL, WHEN USED - TECH WASH SINK ELKAY WALL MOUNTED DWM4820C (NEED TO ADD AN ADA SINK WITH THIS SINK)



Order Plans @ **www.ArchitecturalDrawings.com**  
 Jim Ellis CADILLAC\_atlanta@architecturaldrawings.com  
 8/31/2018 3:07 PM