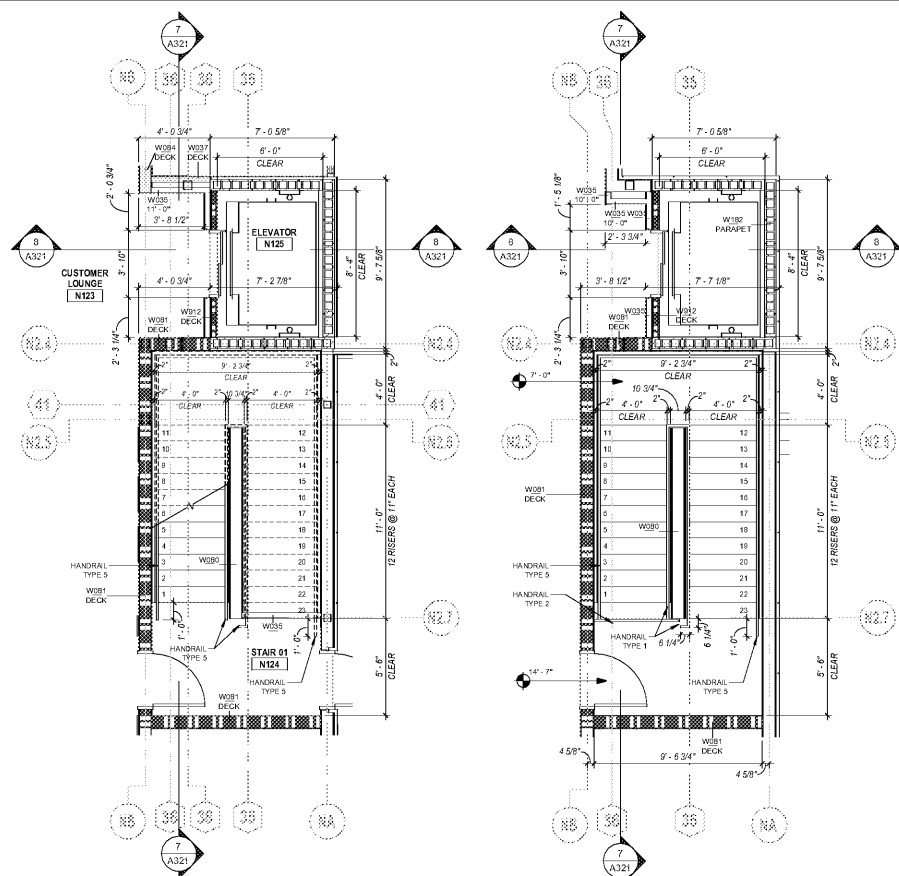
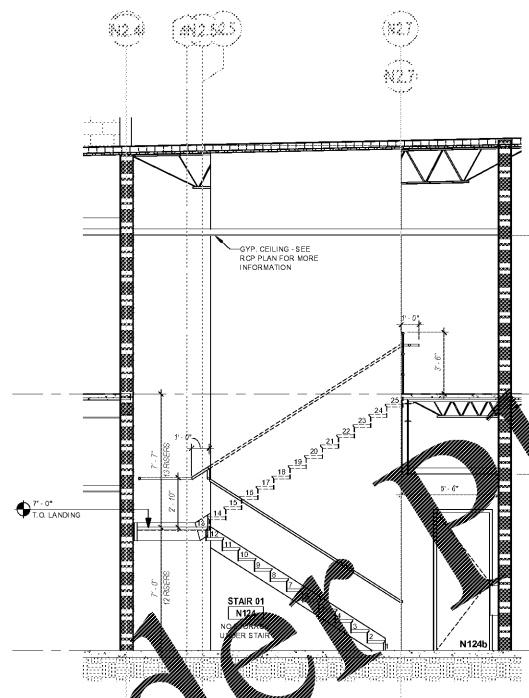


6 AXONOMETRIC - STAIRS & ELEV.
A321

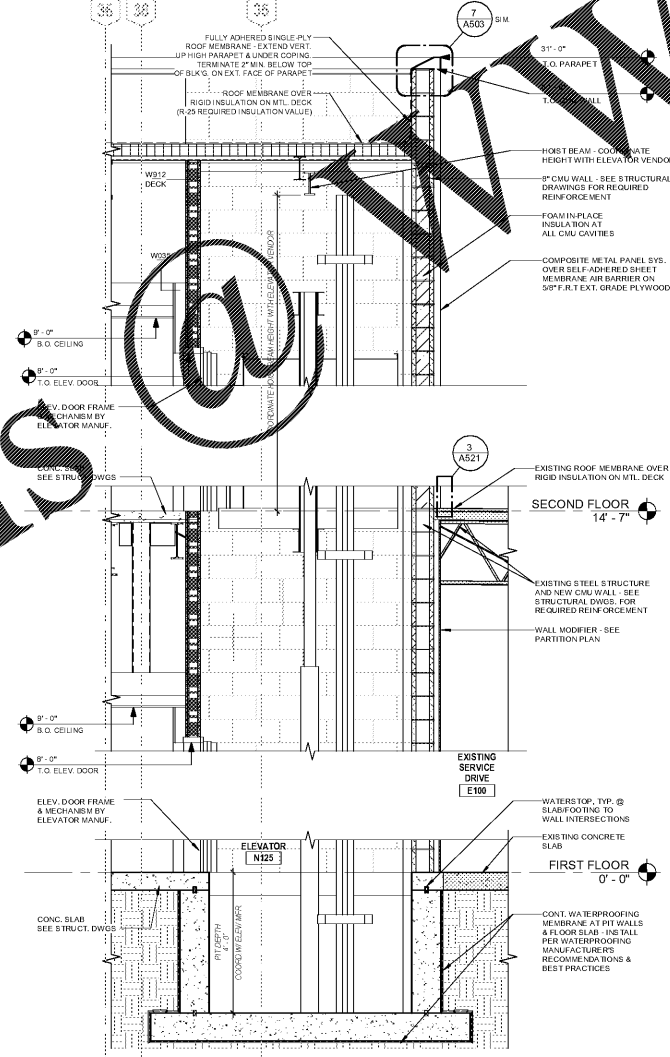


4 STAIR & ELEV. - 1ST FLOOR PLAN
1/4" = 1'-0"

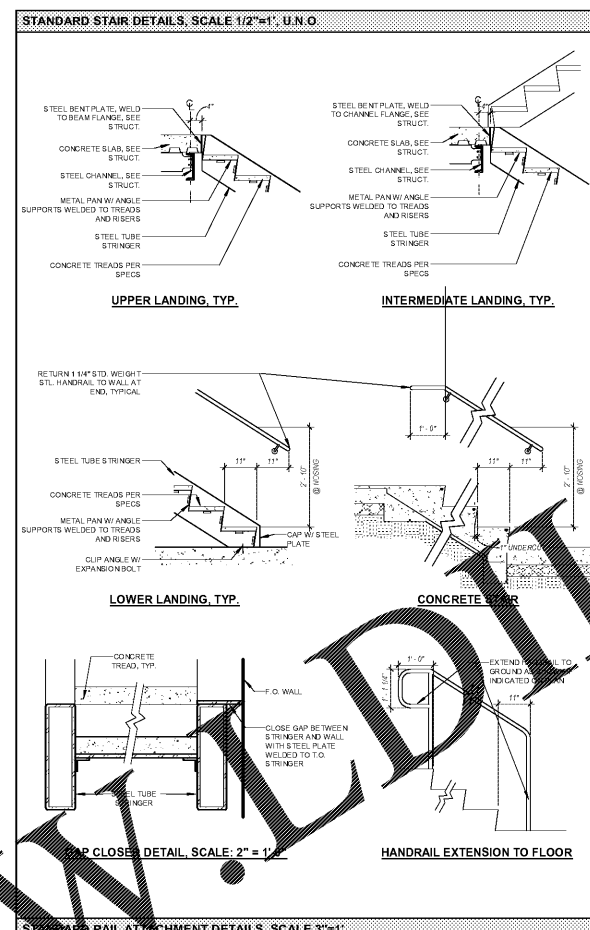
5 STAIR & ELEV. - 2ND FLOOR PLAN
1/4" = 1'-0"



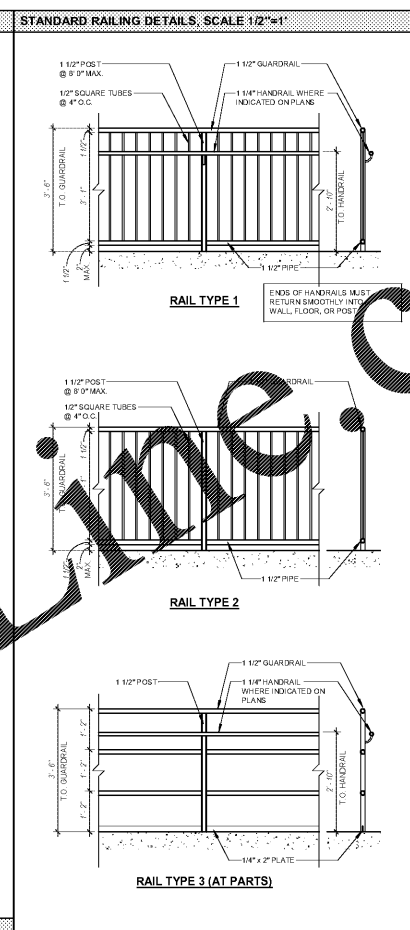
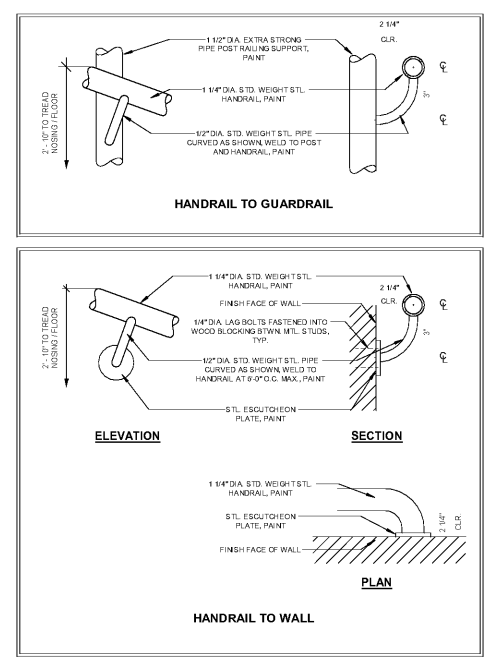
7 STAIR & ELEV. - SECTION 01
1/2" = 1'-0"



8 STAIR & ELEV. - SECTION 02
1/2" = 1'-0"



STANDARD RAIL ATTACHMENT DETAILS, SCALE 3/4" = 1'-0"



STANDARD NOTES

WELDED JOINTS: INTERMITTENTLY WELDED ON BACK SIDE, FILLED WITH BODY PUTTY AND Sanded SMOOTH AND FLUSH.
WELDS EXPOSED TO VIEW: GROUND SMOOTH AND FLUSH.

ysm DESIGN
3120 Ellsworth Industrial Blvd
Suite A-100
Atlanta GA 30318
404-249-4555
404-355-6394
www.ysm.com

Signed & Sealed: 31 AUG 2018
Copyright © 2018 YSM Design, P.C.
All rights reserved. Reproduction, computer file, text data, notes and other documents and information contained herein, in whole or in part, without written permission of YSM Design, P.C. is strictly prohibited and may result in legal action.

Rev	Date	Comments

BID SET
Every Contractor or Subcontractor, by submitting a bid for this project, certifies that they have reviewed all aspects of this project and have included all work required to provide a complete project that meets all building codes.
If questions or discrepancies are found between trades, bidders should be submitted by the building General Contractor as a Request for Information on form back and forth. These clarifications will be issued to all bidders in Atlanta. No consideration will be given after the bid date for issues that could clearly have been assumed during the bidding process.
Information to all bidders:
For more information about this bid, including a list of the most current documents, instructions to bidders, Responsibility Chart, answers to RFI, etc., go to project website. Note that address will be provided to bidders with invitation to bid.
It is the responsibility of ALL bidders to become familiar with this set and the additional information that is contained therein. If you do not have access to the internet you MUST contact your General Contractor for this information. NO CHANGE ORDERS will be accepted for any information that is not included in this set.
No consideration will be given for Change Order Requests based on any of the following:
1. Items requiring clarification but not clearly indicated as an exception on this set.
2. Items requiring clarification but not submitted to Architect as a request for information during bidding.
3. Items deemed to be industry standard for a particular system or assembly.
4. Items that can reasonably be inferred or assumed from contract documents.

PRO BUILDING SYSTEMS
DESIGN BUILD CONTRACTORS

Client:
JIM ELLIS CADILLAC
5880 PEACHTREE BLVD
ATLANTA, GA 30341

Project:
JIM ELLIS CADILLAC
5880 PEACHTREE BLVD
ATLANTA, GA 30341

Project Number: 18020
Drawn By: Author
Checked By: Checker
Approved By: Approver

Sheet Title:
STAIR AND ELEVATORS
Sheet Number:
A321

Order Plans

JIM ELLIS CADILLAC, esanchez.rvt
D:\esanchez\2018\9312018\3018\A321.rvt