

BID SET

Every Contractor or Subcontractor, by submitting a bid for this project, certifies that they have reviewed all aspects of this project and have included all work required to provide a complete project that meets all building codes.

If questions or discrepancies are found between trades, bidders should be submitted by the building General Contractor as a Request for Information on this bid. These questions will be issued to all Bidders in Atlanta. No consideration will be given after the bid date for issues that could clearly have been assumed during the bidding process.

Information to all Bidders:
For more information about this bid, including a list of the most current documents, visitations to Bidders, Responsibility Chart, answers to RFI, etc. go to project website. Note this address will be provided to bidders with invitation to bid.

It is the responsibility of ALL Bidders to become familiar with this set and the additional information that is contained therein. It is not to be used as a basis for any bid. No Change Orders will be accepted for any information.

No consideration will be given for Change Order Requests based on any of the following:
1. Items requiring clarification but not clearly indicated as an exception on this set of bid.
2. Items requiring clarification but not submitted to Architect as a request for information during bidding.
3. Items deemed to be industry standard for a particular system or assembly.
4. Items that can reasonably be inferred or assumed from contract documents.

Client:
JIM ELLIS CADILLAC

5880 PEACHTREE BLVD
ATLANTA, GA 30341

Project:
JIM ELLIS CADILLAC

5880 PEACHTREE BLVD
ATLANTA, GA 30341

Project Number: 18020
Drawn By: Author
Checked By: Checker
Approved By: Approver

Sheet Title:
RCP

Sheet Number:
A181

RCP NOTES

1. PROVIDE CONCEALED FIRE SPRINKLER HEADS IN ALL GYP CEILINGS. PROVIDE CONCEALED FIRE SPRINKLER HEADS IN ALL SPECIALTY "MOLDED" TILE CEILINGS, SUCH AS HUNTER DOUGLAS "TIGER" TILE AND ARISTON TILE CEILING.
2. INSTALL CONTROL JOINTS IN ALL GYP CEILINGS AND SOFFITS. INSTALL AT ALL INSIDE CORNERS AND COLUMN PERIMETER, AND AT OTHER LOCATIONS AS SHOWN.
3. ALL GYP "CLOUD" CEILINGS SHALL RECEIVE A LEVEL FINISH.

SITE LIGHTING NOTES

1. UNLESS OTHERWISE LIMITED BY A.I., PROVIDE MIN. AVERAGE 30 FOOT CANDLE AT THE FRONT LINE.
2. PROVIDE MINIMUM 1.5 FOOT CANDLE UNIFORMITY ACROSS THE IMMEDIATE AND CUSTOMER PARKING AREA OF THE SITE.
3. PROVIDE DR. INDEX - 70 MIN AT THE FRONT LINE AND IMMEDIATELY ADJACENT TO THE FRONT OF THE SHOWROOM.
4. PROVIDE ALL POLE LIGHTS WITH AN ANGLE COB-A1 2-PIN DIMMING RECEPTACLE.
5. PROVIDE EVERY OTHER POLE WITH A 1.5V CONVENIENCE OUTLET.
6. PROVIDE CUTOFF SHIELDS AS REQUIRED TO MEET JOINTING REQUIREMENTS, AND TO MEET LED/PTL 24 REQUIREMENTS WHERE APPLICABLE.

INDOOR LIGHTING NOTES

1. SEE ELECTRICAL DRAWINGS FOR COMPLETE LIGHTING INFORMATION. LIGHT FIXTURES SHOWN ON THE ARCHITECTURAL PLAN ARE FOR COORDINATION ONLY.
2. UNLESS NOTED OTHERWISE, VOLTAGE SHALL BE 480V AND 200V MINIMUM.
3. GC AND LIGHTING VENDORS SHALL EXAMINE THE SPECIFICATIONS FOR SPECIAL CEILING SYSTEMS, DRAWINGS AND COORDINATE LIGHTING AND MECHANICAL FIXTURES AS REQUIRED.

CEILING LEGEND

	HVAC SUPPLY - SEE MECHANICAL		EXHAUST - SEE MECH.
	HVAC RETURN - SEE MECHANICAL		CEILING ACCESS PANEL
	SLOT DIFFUSER - SEE MECHANICAL		STRUCTURAL STEEL
	LAY IN LIGHT FIXTURE ELECTRICAL		STRUCTURAL STEEL - SEE ELECTRICAL
	EMERGENCY - SEE ELECTRICAL		STRUCTURAL STEEL - SEE ELECTRICAL
	WALL PACK - ELECTRICAL		RECESSED DOWNLIGHT
	RECESSED DOWNLIGHT		RECESSED DOWNLIGHT
	RECESSED DOWNLIGHT		RECESSED DOWNLIGHT

CEILING SCHEDULE

A	GYP WALLBOARD - SEE FINISH SCHEDULE FOR PAINT
B	ACOUSTICAL TILE (ACT-1)
C	2' X 2' ACOUSTICAL TILE (ACT-2)
D	
H	
L	
M	
N	
X	EXPOSED TO STRUCTURE, PAINTED PT-1
Z	

HATCH AREA

	HATCH AREA INDICATES 1-HOUR RATED ASSEMBLY		HATCH AREA INDICATES 2-HOUR RATED ASSEMBLY
--	--	--	--

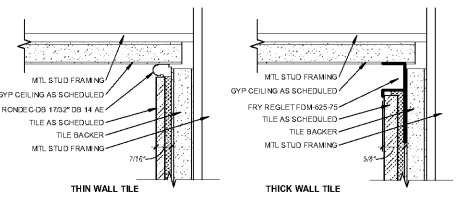
SCOPE OF WORK LEGEND

NOTE: THESE DESIGNATIONS ARE SPECIFIC TO EACH DRAWING SHEET. GC SHALL REVIEW SCOPE INDICATED ON EVERY SHEET.

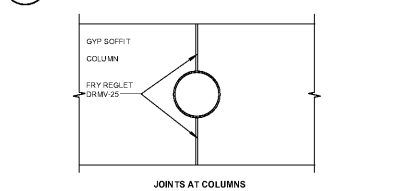
	HATCH REPRESENTS AREAS OUT OF PROJECT SCOPE. NO WORK SHALL BE DONE IN THESE AREAS, U.N.O.
	IN-SCOPE WORK IS SPECIFICALLY DETAILED IN THE CONSTRUCTION DOCUMENTS.
	HATCH REPRESENTS AREAS OF LIMITED SCOPE. SEE NOTE BELOW.

LIMITED SCOPE INCLUDES WALL PAINT, WALL BASE, ELECTRICAL DEVICE COVER PLATES & DIFFUSERS, COULLES, AND RECEPTACLES.

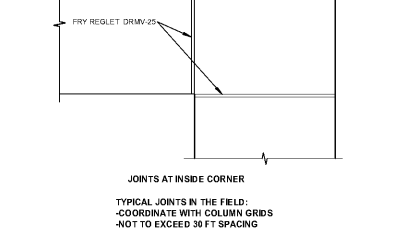
REPAIR AND PREP EXISTING CONSTRUCTION AS REQUIRED PRIOR TO PAINTING FOR "LIKE NEW" CONDITION. REPAIR/REPLACE WALL BASE & ELECTRICAL DEVICE COVER PLATES AS REQUIRED. REPLACE DAMAGED DIFFUSERS AND GRILLES TO MATCH ADJACENT SPECIFICATION, AND CLEAN ALL DIFFUSERS AND GRILLES DETERMINED TO REMAIN. THESE ITEMS MUST BE VISIBLY INSPECTED BY THE GC TO DETERMINE SCOPE AND PRICE FOR THE CLIENT AT THE TIME OF BID. THESE ITEMS ARE NOT SPECIFICALLY INDICATED IN THIS SET OF CONSTRUCTION DOCUMENTS.



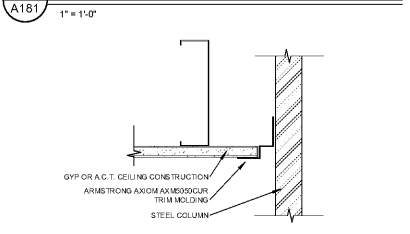
1 RESTROOM CEILING REVEAL
A181 6" = 1'-0"



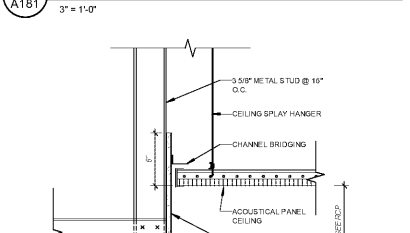
3 TYP. CEILING CONTROL JOINTS
A181 1" = 1'-0"



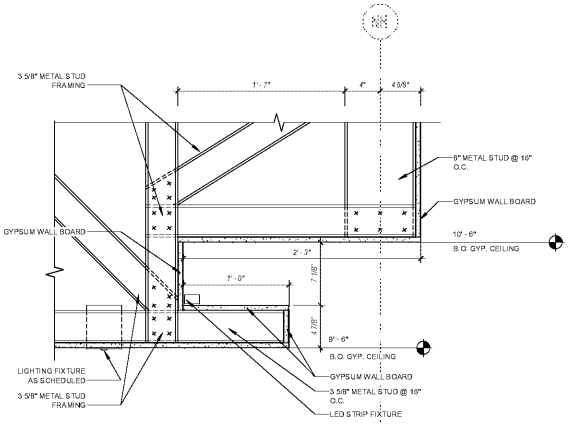
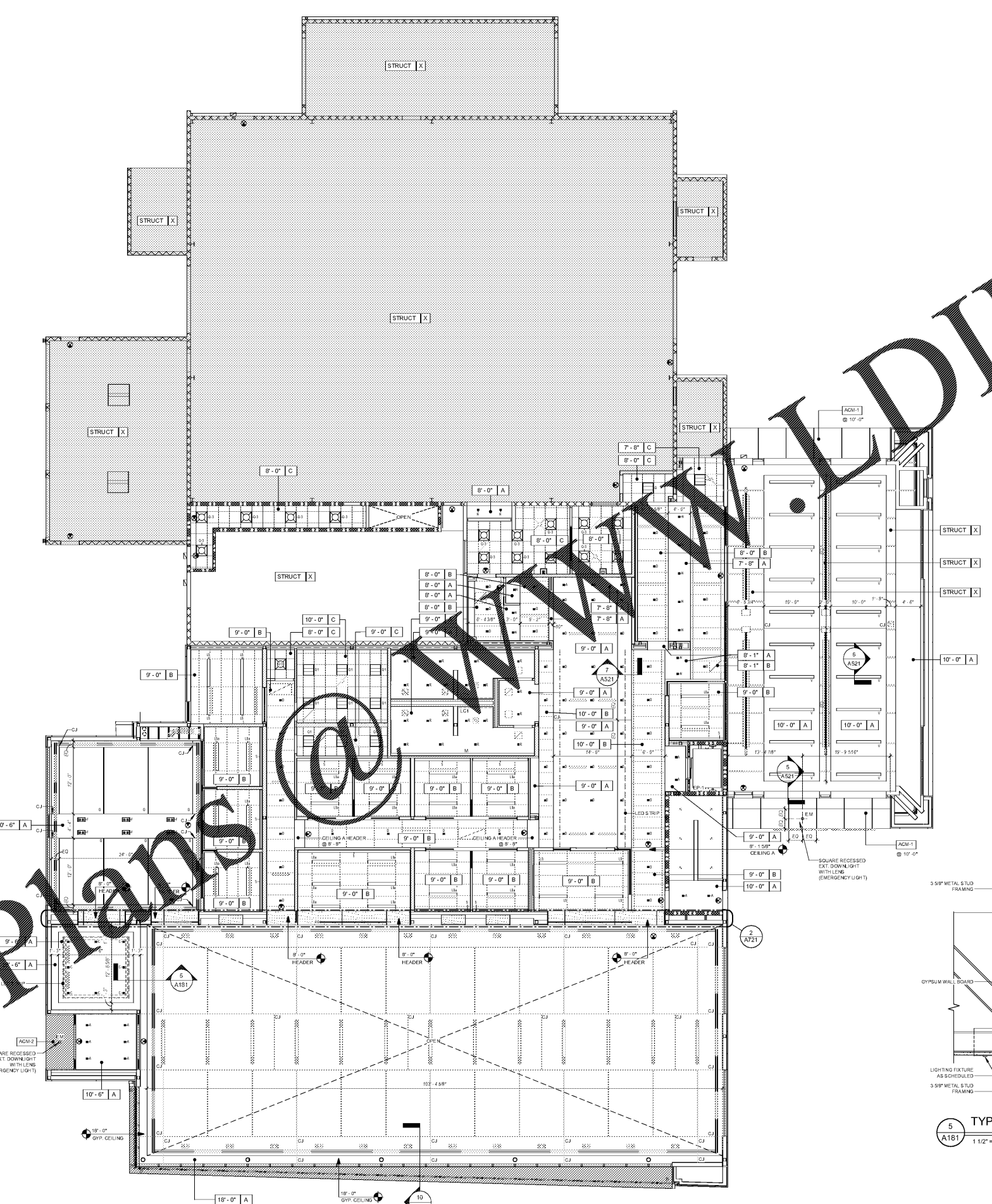
4 TYP. COLUMN TRIM AT CLG
A181 3" = 1'-0"



2 TYP. SECT. DTL. - ACT & GYP SOFFIT
A181 1 1/2" = 1'-0"



7 TYP. SUSPENDED DRYWALL SYSTEM
A181 3" = 1'-0"



5 TYP. SECT. DTL. @ CONCIERGE'S CEILING
A181 1 1/2" = 1'-0"

6 RCP - FIRST FLOOR PLAN
A181 1/8" = 1'-0"

Order Plans @ plans@ysm.com
 Jim Ellis Cadillac, esanchez.rvt
 D:\esanchez\18018_03\18018_03.rvt
 8/31/2018 3:07 PM