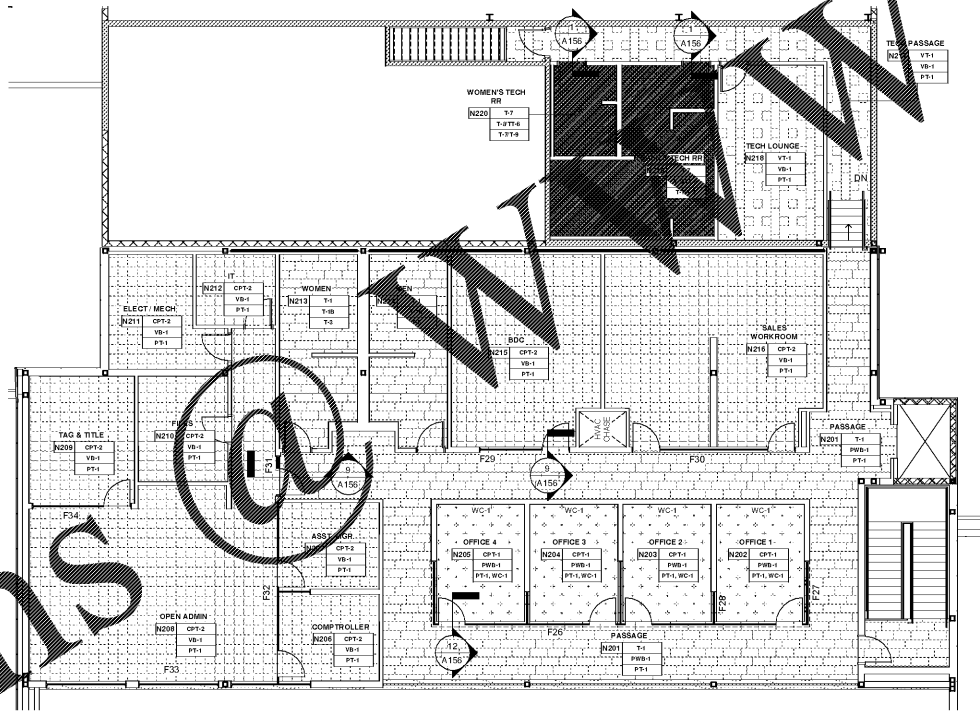


D:\esplanz\2018\93172018\3018\JIM ELLIS CADILLAC\_02a.mxd  
 9/3/2018 3:07 PM

Order Plans



**TILE NOTES**

NOTE: SYMBOLIC TILE PATTERNS SHOWN INDICATE GENERAL DESIGN INTENT ONLY. DUE TO VARIATIONS IN EXACT TILE SIZE AND GROUT JOINTS WIDTHS, AND FIELD VARIATIONS TO THE LOCATION OF COORDINATING ARCHITECTURAL ELEMENTS, SPECIFIC ALIGNMENTS OF JOINTS TO OTHER ARCHITECTURAL ELEMENTS CANNOT BE GUARANTEED AS SHOWN. ANY SUCH ALIGNMENT OF TILE JOINTS MUST BE COORDINATED IN THE FIELD AND IS THE RESPONSIBILITY OF THE CONTRACTOR.

- IN NON-RESTROOM LOCATIONS, THE GENERAL CONTRACTOR SHALL PRICE AND INSTALL BULLNOSE EDGE TILE AT ALL TILE TO GYP CONDITIONS. IF BULLNOSE TRIM IS NOT AVAILABLE, THE GC SHALL CUT AND ROUND OVER REGULAR TILE. TILE BASE SHALL BE MITERED AT OUTSIDE CORNERS. GENERAL CONTRACTOR SHALL PRICE AND INSTALL COVERED BASE TILE. COVERED BASE SHALL BE INSTALLED FLUSH TO FLOOR TILE, NOT ON TOP OF FLOOR TILE. SEE DETAIL.
- IN RESTROOMS, THE GENERAL CONTRACTOR SHALL USE SCHLUTER STAINLESS STEEL TRIM, INCLUDING ENDCAPS AND OTHER ACCESSORIES IN LIEU OF BULLNOSE AND COVERED BASE TILE. SEE DETAIL.  
-SCHLUTER "ROUND" AT OUTSIDE CORNERS AND TILE TO GYP TRANSITIONS  
-SCHLUTER "DILEX EM" AT INSIDE CORNERS AND AS BASE COVE  
-INCLUDE END CAPS AND CORNERS AS REQUIRED.
- IN OTHER LOCATIONS:  
-CARPET TO TILE, WHERE TOPS OF FINISHES ARE LEVEL - SCHLUTER "SCHEME"  
-CARPET TO TILE, WHERE CARPET IS BELOW TILE - SCHLUTER "NO 4"  
-TILE TO CONCRETE - SCHLUTER "RENO RAMP"  
-BETWEEN TILE COLORS - SCHLUTER "TRIM LINE"  
-AT STAIRS, SEE STAIR DETAILS.

**SCOPE OF WORK LEGEND**

NOTE: THESE DESIGNATIONS ARE SPECIFIC TO EACH DRAWING SHEET. GC SHALL REVIEW SCOPE LISTED ON EVERY SHEET.

□ WHICH REPRESENTS ARE IN PROJECT SCOPE, NO WORK SHALL BE DONE IN THESE AREAS, U.N.O.

▨ IN THESE WORK ARE SPECIFICALLY DETAILED IN THE CONSTRUCTION DOCUMENTS.

▩ HATCH REPRESENTS AREAS OF LIMITED SCOPE, SEE NOTE BELOW.

▧ LIMITED SCOPE INCLUDES WALL PAINT, WALL BASE, ELECTRICAL DEVICE COVER PLATES & REPAIR AND PREP EXISTING CONSTRUCTION AS REQUIRED PRIOR TO PAINTING FOR "LIKE NEW" CONDITION. REPAIR/REPLACE WALL BASE, ELECTRICAL DEVICE COVER PLATES AS REQUIRED. REPLACE DAMAGED DIFFUSERS AND GRILLES TO MATCH ADJACENT SPECIFICATION, AND CLEAN ALL DIFFUSERS AND GRILLES TO REMAIN. THESE ITEMS MUST BE VISIBLY INSPECTED BY THE GC TO DETERMINE SCOPE AND PRICE FOR THE CLIENT AT THE TIME OF BID. THESE ITEMS ARE NOT SPECIFICALLY INDICATED IN THIS SET OF CONSTRUCTION DOCUMENTS.

**FINISH NOTES**

**NOTES AND MISCELLANEOUS FINISHES:**

- THE FINISHES SELECTED ABOVE REPRESENT ALL OF THE MANUFACTURER'S STANDARDS AND A RESULT SOME ITEMS LISTED MAY NOT APPLY TO THIS SPECIFIC PROJECT.
- NO SUBSTITUTIONS ARE PERMITTED OF ANY FINISH LISTED ABOVE UNLESS AUTHORIZED BY ARCHITECT.
- AUTOTONE TILEWORK MUST BE PERFORMED BY AUTOTONE APPROVED INSTALLER FOR BEST RESULTS AND TO MAINTAIN WARRANTY.
- ELECTRICAL FIXTURES: FLOOR BOXES IN PFT-2 AND OPT-2 SHALL BE BLACK FINISH. FLOOR BOXES IN PFT-1 SHALL BE BRUSH METAL TO TILE. DEVICES AND COVER PLATES IN WHITE WALLS SHALL BE WHITE. DEVICES IN PARTS AND SERVICE BAYS SHALL BE BLACK WITH STAINLESS STEEL PLATES.
- EXTERIOR LIGHTING FIXTURES SHALL BE WHITE.
- DOOR HARDWARE FINISH SHALL BE BRUSH STAINLESS STEEL, OR SIMILAR.
- FAUCET FINISH SHALL BE POLISHED CHROME.
- FIRE ALARM PANELS AND DEVICES IN TOWER CONTACT AREAS SHALL BE RED LETTER ON WHITE CASE. IN ALL OTHER LOCATIONS, WHITE LETTER ON RED CASE.

**TILE FINISH NOTES**

- THE GENERAL CONTRACTOR SHALL PRICE AND INSTALL BULLNOSE EDGE TILE AT ALL EDGE CONDITIONS AND AT OUTSIDE CORNER CONDITIONS IN NON-RESTROOM LOCATIONS. GENERAL CONTRACTOR SHALL PRICE AND INSTALL COVERED BASE TILE AT WALL TO BASE CONDITION. COVERED BASE SHALL BE INSTALLED FLUSH TO FLOOR TILE, NOT ON TOP OF FLOOR TILE. SEE DETAIL.
- IN RESTROOMS, THE GENERAL CONTRACTOR SHALL USE SCHLUTER STAINLESS STEEL TRIM, INCLUDING ENDCAPS AND OTHER ACCESSORIES IN LIEU OF BULLNOSE AND COVERED BASE TILE.

**FINISH KEY**

NOTE: GRAPHICAL PATTERNS ARE SHOWN TO INDICATE MATERIAL TYPE, NOT FLOORING PATTERN OR ORIENTATION

	T-1		T-4
	T-2		T-6
	CPT-1		T-7
	FG-1		CPT-2
	VT-1		CONC-1
	T-5		

**ysm DESIGN**  
 1320 Ellsworth Industrial Blvd  
 Suite A-100  
 Atlanta GA 30318  
 404-249-4555  
 404-355-6530  
 www.ysm.com

Signed & Sealed: 31 AUG 2018

Copyright © 2018 YSM Design, P.C.  
 All rights reserved. Specifications, computer files, text data, notes and other documents and information contained by YSM Design, P.C. are the property of YSM Design, P.C. and shall remain confidential. No reproduction or distribution is permitted without the written consent of YSM Design, P.C. This set of construction documents is intended for the project identified in the title block. No other use is permitted.

Rev	Date	Comments

**BID SET**

Every Contractor or Subcontractor, by submitting a bid for this project, certifies that they have reviewed all aspects of this project and have included all work required to provide a complete project that meets all building codes.

Requests or discrepancies are based between trades, bids should be submitted by the building General Contractor as a Request for Information on form bid-1 and bid-2. These Certifications will be issued to all Bidders in Attachment. No consideration will be given after the bid date for issues that could clearly have been assessed during the bidding period.

Information to all Bidders:  
 For more information about this bid, including a list of the most current documents, instructions to bidders, Responsibility Chart, answers to RFI, etc., go to project website. Note the address will be provided to bidders with invitation to bid.

It is the responsibility of ALL Bidders to become familiar with this set and the additional information that is contained therein. If you do not have access to the internet you MUST contact your General Contractor for this information. No Change Order will be accepted for not reviewing this information.

No consideration will be given for Change Order Requests based on any of the following:

- Items requiring clarification but not clearly indicated as an exception on the bid.
- Items requiring clarification but not submitted to Architect as a request for information during bidding.
- Items deemed to be industry standard for a particular system or assembly.
- Items that can reasonably be inferred or assumed from contract documents.



Client:  
**JIM ELLIS CADILLAC**  
 5880 PEACHTREE BLVD  
 ATLANTA, GA 30341

Project:  
**JIM ELLIS CADILLAC**  
 5880 PEACHTREE BLVD  
 ATLANTA, GA 30341

Project Number: 18020  
 Drawn By: Author  
 Checked By: Checker  
 Approved By: Approver

Sheet Title:  
**FINISH PLAN**

Sheet Number:  
**A152**