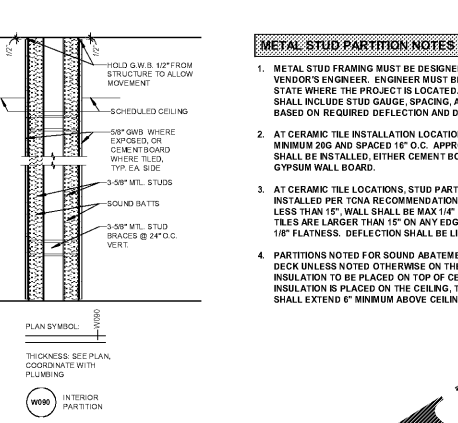
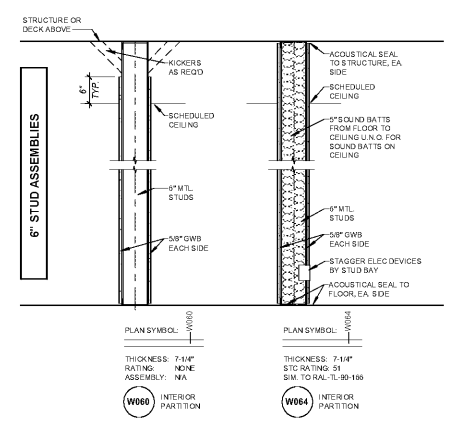
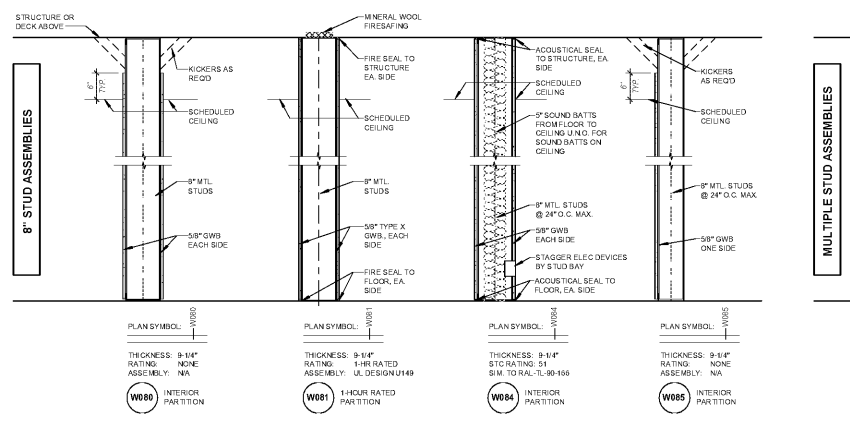
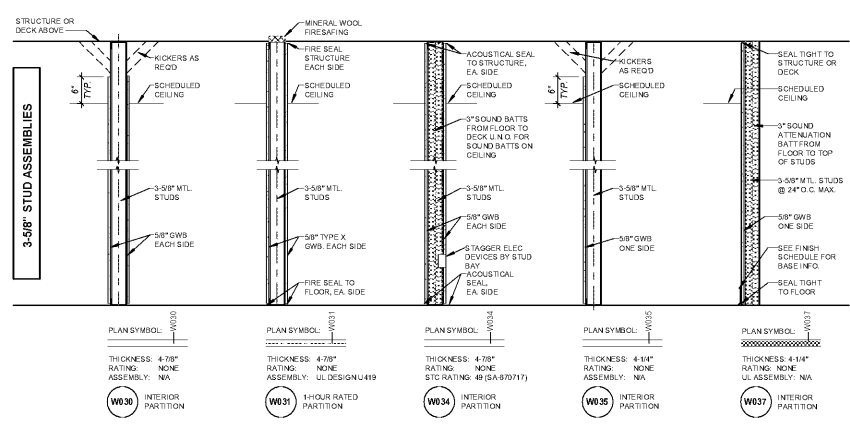


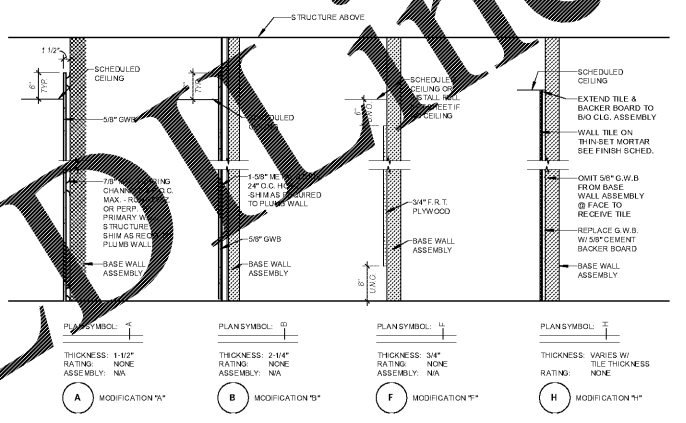
METAL STUD PARTITIONS



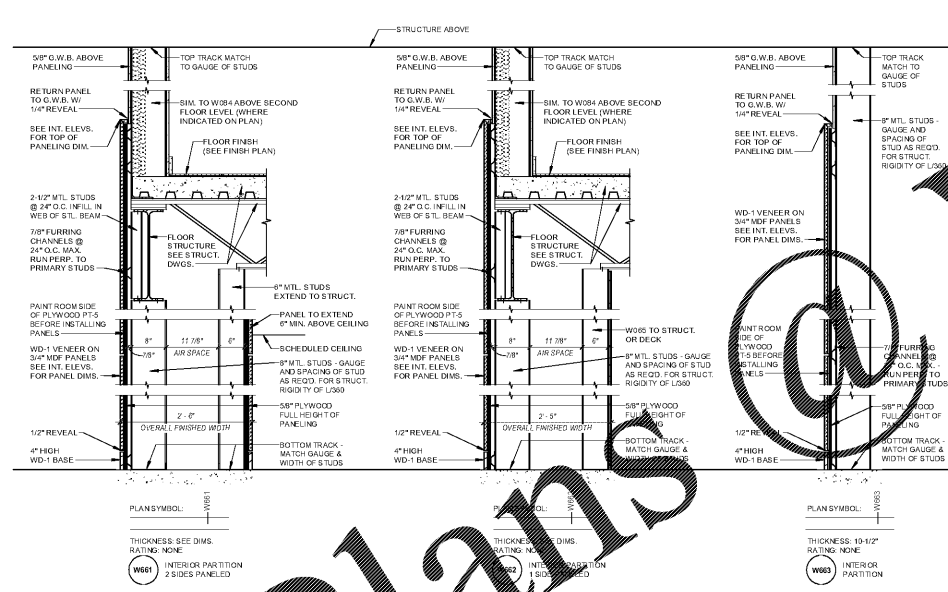
METAL STUD PARTITION NOTES

- METAL STUD FRAMING MUST BE DESIGNED BY THE STUD VENDOR'S ENGINEER. ENGINEER MUST BE REGISTERED IN THE STATE WHERE THE PROJECT IS LOCATED. ENGINEERING DESIGN SHALL INCLUDE STUD GAUGE, SPACING, AND LIMITING HEIGHT BASED ON REQUIRED DEFLECTION AND DESIGN BRACING.
- AT CERAMIC TILE INSTALLATION LOCATIONS, STUDS SHALL BE MINIMUM 20G AND SPACED 16\"/>

WALL MODIFICATION TYPES



WOOD paneled WALL TYPES

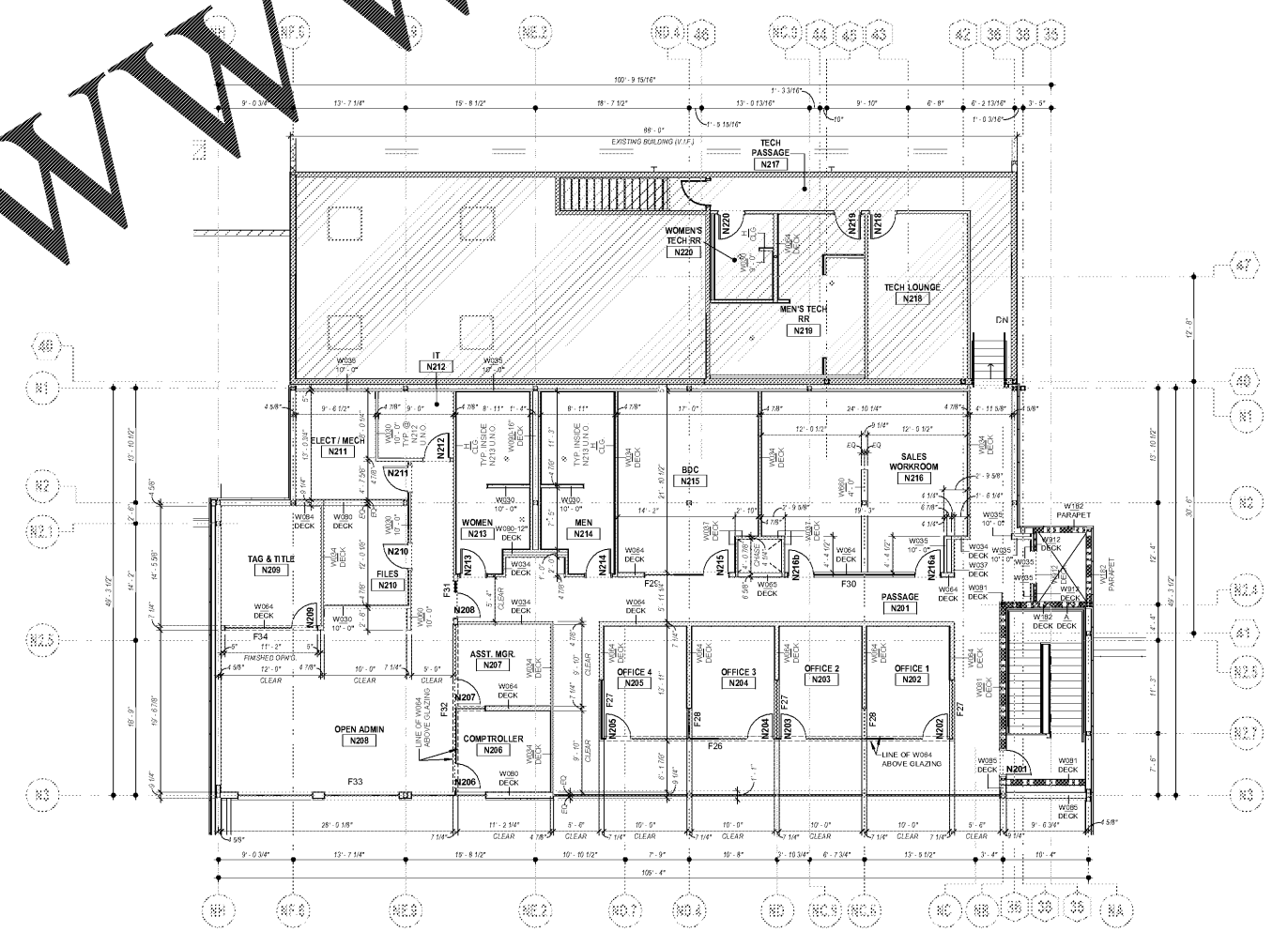


PARTITION TYPE NOTES

BRACING NOTE:
ALL STUD PARTITIONS SHALL BE BRACED ABOVE THE FINISHED CEILING AS RECOMMENDED BY THE METAL STUD MANUFACTURER TO PREVENT LATERAL WALL MOVEMENT.

INSULATION:
ALL WALLS WHICH SEPARATE A SPACE FROM AN UNCONDITIONED AREA (E.G. OUTSIDE OF THE BUILDING, SERVICE DRIVE, SHOP, OR SOME INTERIOR UNCONDITIONED ROOMS) SHALL HAVE R-15 FIBERGLASS BATT INSULATION AS CALLED FOR IN THE SPECIFICATIONS.

PARTITION TAG SYMBOLS
 PARTITION TYPE
 PARTITION HEIGHT



Order Plans
 JIM ELLIS CADILLAC, estimator vt
 8/31/2018 3:07 PM

ysm DESIGN
 1320 Ellsworth Industrial Blvd
 Suite A-100
 Atlanta GA 30318
 404-249-4555
 404-355-6396
 www.ysm.com

Signed & Sealed: 31 AUG 2018

Rev	Date	Comments

BID SET
 Every Contractor or Subcontractor, by submitting a bid for this project, certifies that they have reviewed all aspects of this project and have included all work required to provide a complete project that meets all building codes.
 If questions or discrepancies arise based on these notes, bidders should be submitted by the Bidding General Contractor as a Request for Information to the Bidding General Contractor. These questions will be given after the bid date for issues that could clearly have been assumed during the bidding process.
 Information to all Bidders:
 For more information about this bid, including a list of the most current documents, instructions to bidders, Responsibility Chart, answers to RFI, etc., go to project website. Note this address will be provided to bidders with invitation to bid.
 It is the responsibility of ALL Bidders to become familiar with this bid and the additional information that is contained therein. If you do not have access to the internet you MUST contact your General Contractor for this information. NO CHANGE ORDERS will be accepted for any information that is contained in this information.
 No consideration will be given for Change Order Requests based on any of the following:
 1. Items requiring clarification but not clearly indicated as an exception on the note bid.
 2. Items requiring clarification but not submitted to Architect as a request for information during bidding.
 3. Items deemed to be industry standard for a particular system or assembly.
 4. Items that can reasonably be inferred or assumed from contract documents.

PRO BUILDING SYSTEMS
 DESIGN BUILD CONTRACTORS

Client:
JIM ELLIS CADILLAC
 5880 PEACHTREE BLVD
 ATLANTA, GA 30341

Project:
JIM ELLIS CADILLAC
 5880 PEACHTREE BLVD
 ATLANTA, GA 30341

Project Number: 18020
 Drawn By: TFL
 Checked By: ES / AEA
 Approved By: Approver

Sheet Title:
PARTITION PLAN - SECOND FLOOR

Sheet Number:
A142