

Signed & Sealed  
Copyright © 2014 YSM Design, P.C.

All reports, plans, specifications, computer files, text data, notes and other documents and information prepared by YSM Design, P.C. are the property of YSM Design, P.C. and shall remain confidential. No part of this document may be reproduced or transmitted in any form or by any means, electronic, mechanical, photocopying, recording, or by any information storage and retrieval system, without the prior written permission of YSM Design, P.C. This document is for the use of the client only and is not to be distributed to other parties.

Rev	Date	Comments

**BID SET**  
Every Contractor or Subcontractor, by submitting a bid for this project declares that they have reviewed all aspects of this project and have included all work required to provide a complete project that meets all building codes.

If questions or discrepancies are found between bidders, these should be submitted by the bidding General Contractor as a Request for Information before bids are due. These clarifications will be issued to all bidders in Atlanta. No consideration will be given after the bid date for issues that could clearly have been answered during the Bidding Period.

Information to all Bidders  
For more information about this bid, including a list of the most current documents, instructions to bidders, Schedule, Responsibility Chart, answers to RFIs, etc., go to project website. Note this address will be provided to bidders with invitation to bid.

It is the responsibility of ALL Bidders to become familiar with this site and the additional information that is contained there. If you do not have access to the internet you MUST contact your General Contractor for this information. No Change Orders will be accepted for not reviewing this information.

No consideration will be given for Change Order Requests based on any of the following:  
1. Items requiring clarification but not clearly indicated as an exception on the initial bid.  
2. Items requiring clarification but not submitted to Architect as a request for information during bidding.  
3. Items deemed to be industry standards for a particular system or assembly.  
4. Items that can reasonably be inferred from contract documents.



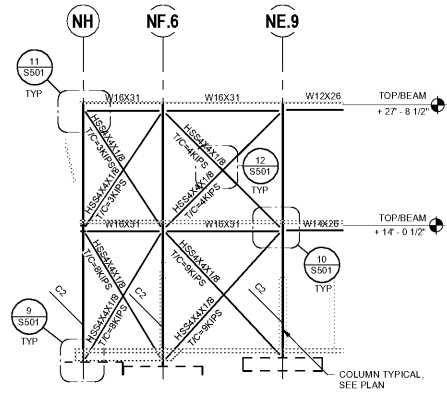
Client:  
**JIM ELLIS CADILLAC**  
5880 PEACHTREE BLVD  
ATLANTA, GA 30341

Project:  
**JIM ELLIS CADILLAC**  
5880 PEACHTREE BLVD  
ATLANTA, GA 30341

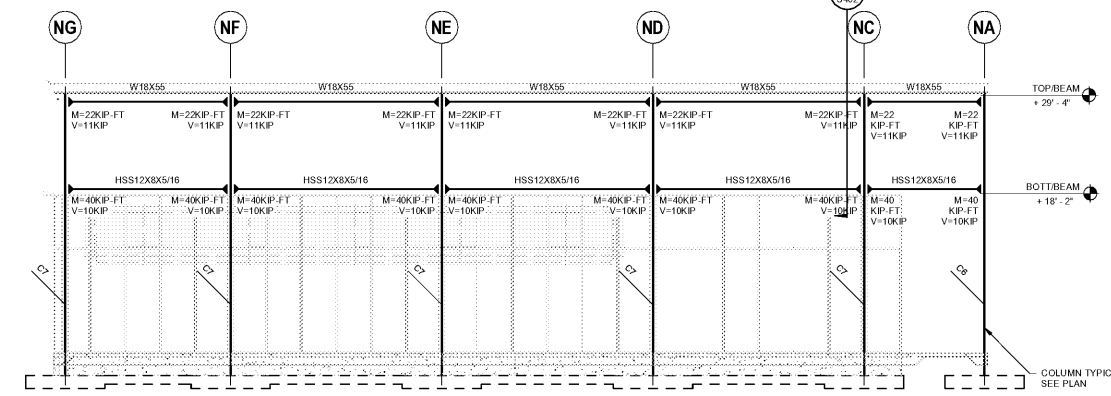
Project Number: 18123  
Drawn By: TTN  
Checked By: TAP  
Approved By: BP

Sheet Title:  
**ELEVATIONS**

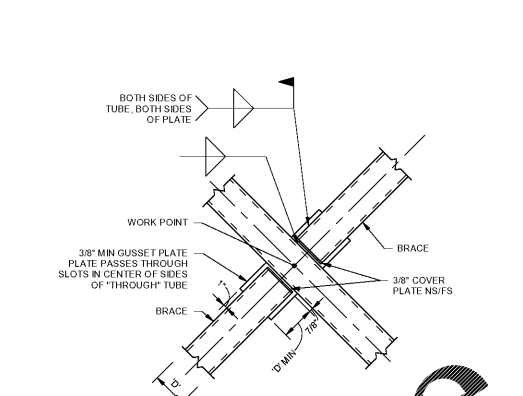
Sheet Number:  
**S501**



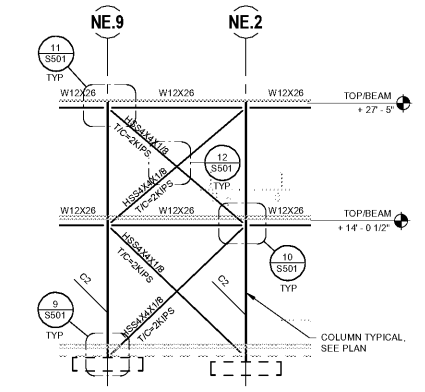
1 BRACED FRAME 1 & 2 (ALONG GRID N2)  
1/8" = 1'-0"



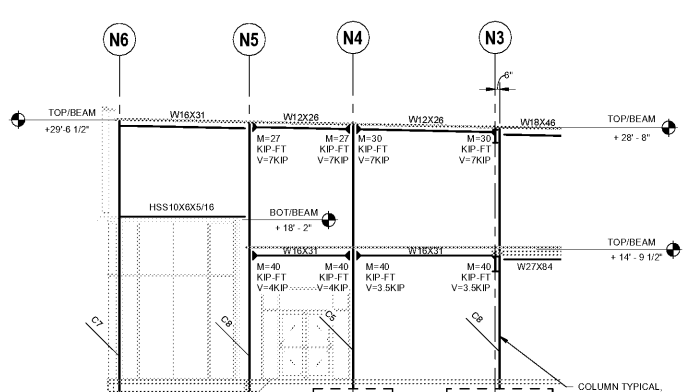
5 MOMENT FRAME ALONG GRID N6  
1/8" = 1'-0"



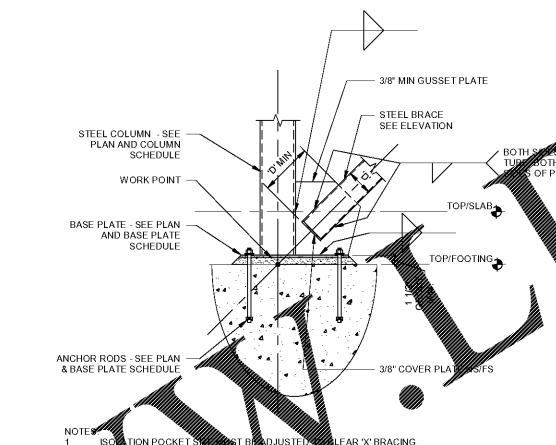
12 X BRACE INTERSECTION  
3/4" = 1'-0"



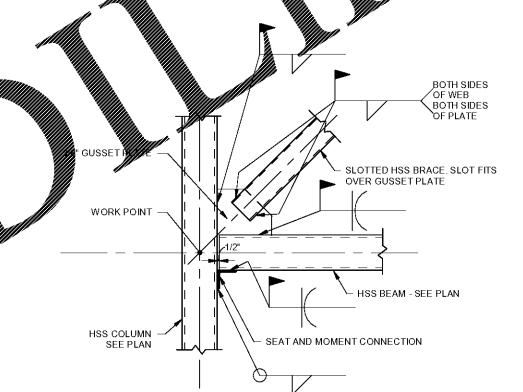
2 BRACED FRAME 3 (ALONG GRID N1)  
1/8" = 1'-0"



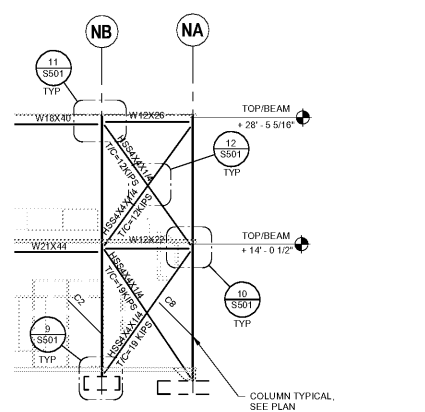
6 MOMENT FRAME ALONG GRID NH  
1/8" = 1'-0"



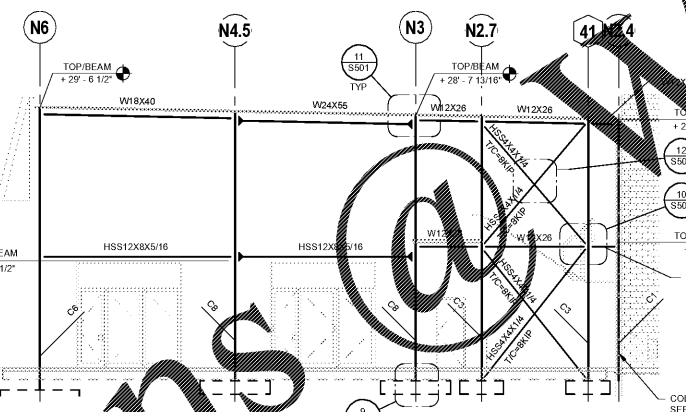
9 BRACE COLUMN AT FOUNDATION  
3/4" = 1'-0"



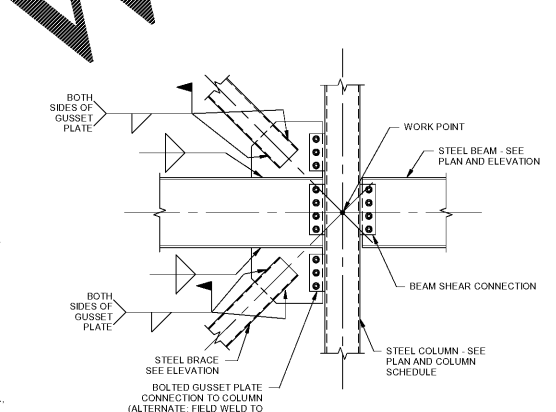
13 X BRACE AT MOMENT CONNECTION  
3/4" = 1'-0"



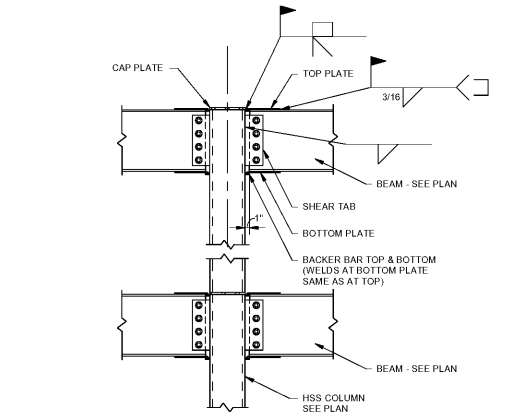
3 BRACED FRAME 4 (ALONG GRID N3)  
1/8" = 1'-0"



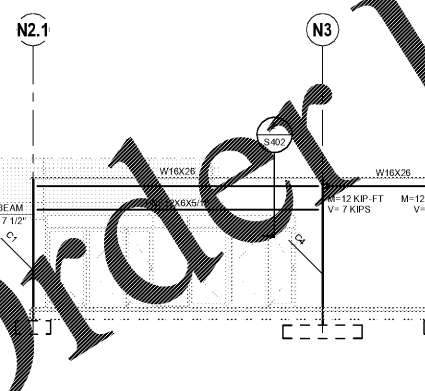
7 BRACED FRAME 5 (ALONG GRID NA)  
1/8" = 1'-0"



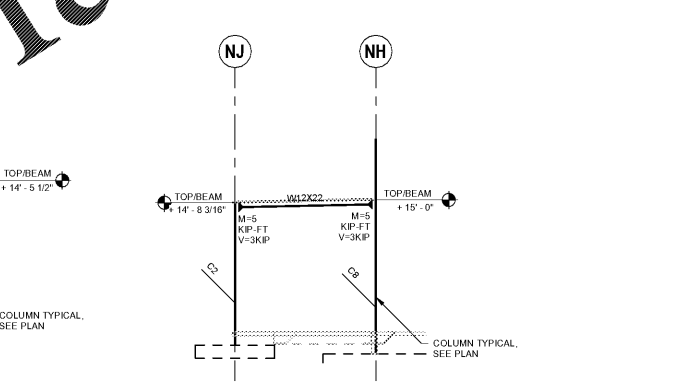
10 X BRACE AT BEAM  
3/4" = 1'-0"



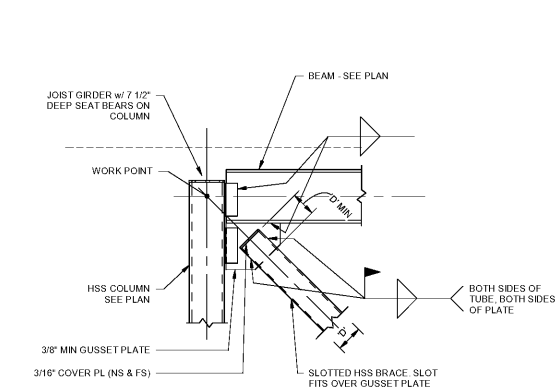
14 TYPICAL BEAM COLUMN MOMENT CONNECTION  
3/4" = 1'-0"



4 MOMENT FRAME ALONG GRID NJ  
1/8" = 1'-0"



8 MOMENT FRAME ALONG GRID N5 AND GRID N2.1  
1/8" = 1'-0"



11 X-BRACE AT ROOF  
3/4" = 1'-0"

**NOTES:**  
INDICATES MOMENT CONNECTION.  
FOR MOMENT FRAMES, AND OTHER CONNECTIONS INDICATED AS DELEGATED DESIGN, THE STEEL DETAILER TO DESIGN CONNECTIONS FOR LOADS INDICATED. LOADS ARE SERVICE LOADS. CALCULATIONS SHALL BE SIGNED AND SEALED BY A REGISTERED PROFESSIONAL ENGINEER LICENSED IN THE PROJECT STATE.

C:\Users\mray\Documents\18123-EC-Struct-REV17\_Mecha\_Augustin.rvt  
8/30/2018 3:50 PM

Order Plans

www.Downline.com

NOT FOR CONSTRUCTION