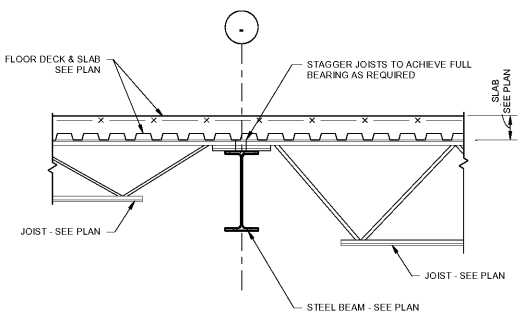
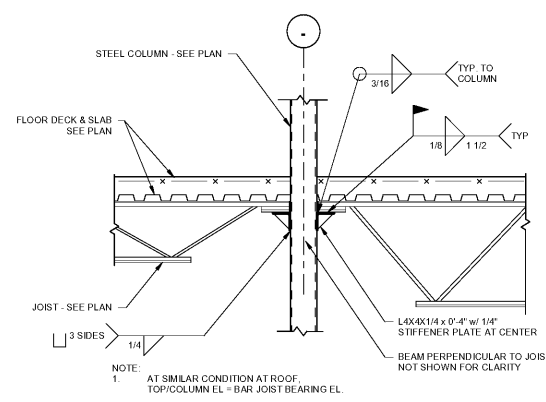


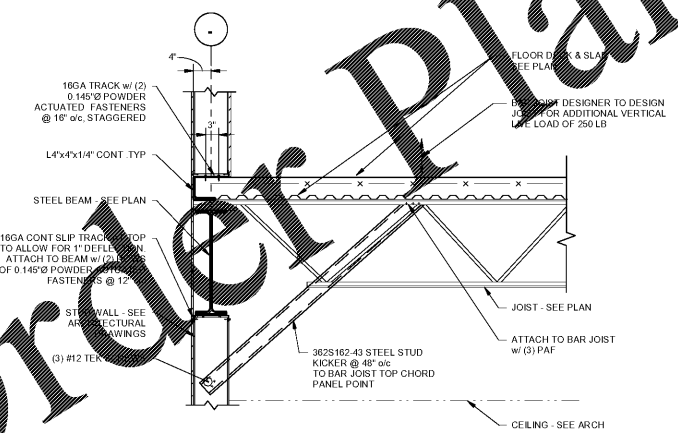
1 TYPICAL SMALL OPENINGS THROUGH ROOF DECK  
S401 N.T.S.



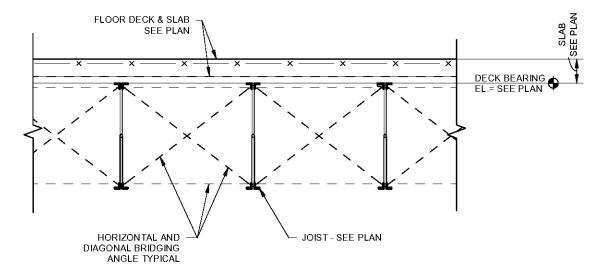
2 TYPICAL BAR JOIST BEARING ON INTERIOR BEAM  
S401 3/4" = 1'-0"



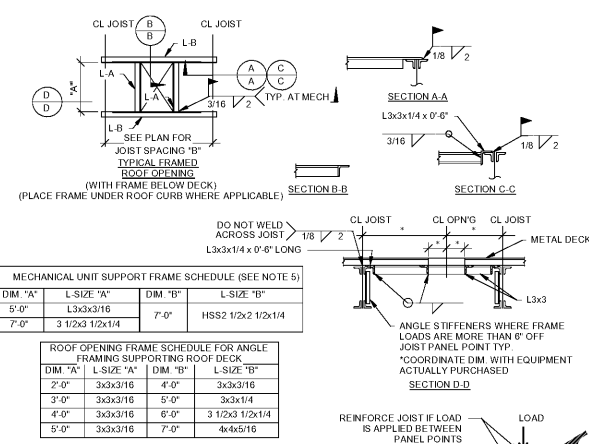
3 TYPICAL BAR JOIST BEARING ON INTERIOR COLUMN  
S401 3/4" = 1'-0"



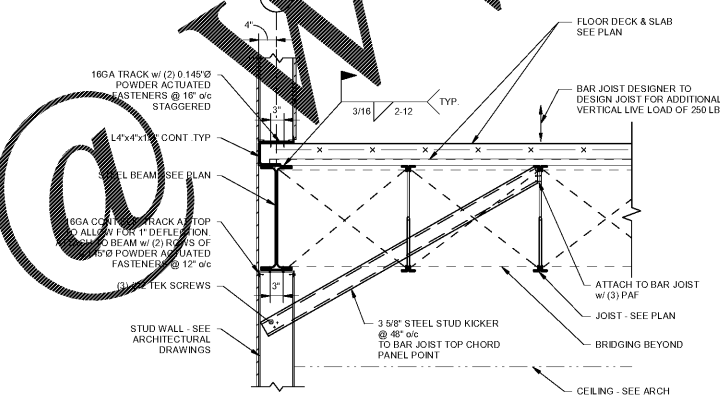
4 TYPICAL EDGE OF FLOOR SLAB PERPENDICULAR TO JOIST  
S401 3/4" = 1'-0"



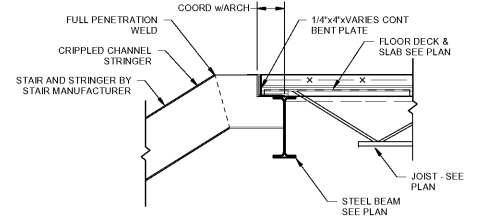
5 TYPICAL BAR JOIST BRIDGING DETAIL AT SECOND FLOOR  
S401 3/4" = 1'-0"



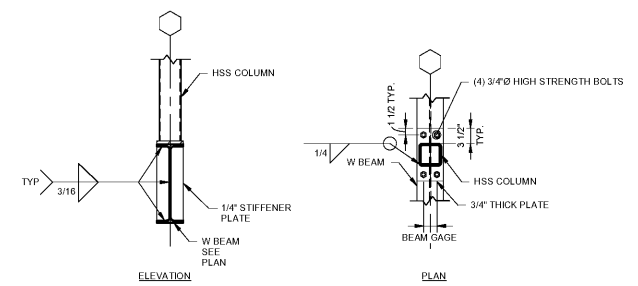
6 TYPICAL FRAMED ROOF OPENING DETAILS  
S401 N.T.S.



7 TYPICAL EDGE OF FLOOR SLAB PARALLEL TO JOIST  
S401 3/4" = 1'-0"



8 STAIR STRINGER CONNECTION TO BEAM  
S401 3/4" = 1'-0"



9 TYPICAL HSS POST ON BEAM  
S401 3/4" = 1'-0"

**ysm DESIGN**  
RETAIL/AUTOMOTIVE ARCHITECTURE

1320 Ellsworth Industrial Blvd  
Suite A-100  
Atlanta GA 30318  
404-249-4555  
404-355-6394

www.ysm.com

Signed & Sealed

Rev	Date	Comments

**BID SET**

Every Contractor or Subcontractor, by submitting a bid for this project declares that they have reviewed all aspects of this project and have included all work required to provide a complete project that meets all building codes.

If questions or discrepancies are found between these plans and specifications, the Contractor shall contact the Architect immediately and obtain clarification before bid is due. These clarifications will be issued to all Bidders in Atlanta. No consideration will be given after the bid date for issues that could clearly have been ascertained during the Bidding Period.

Information to all Bidders:  
For more information about this bid, including a list of the most current documents, instructions to Bidders, Responsibility Chart, answers to RFI, etc., go to project website. Note this address will be provided to bidders with invitation to bid.

It is the responsibility of ALL Bidders to become familiar with this site and the additional information that is contained there. If you do not have access to the internet you MUST contact your General Contractor for this information. No Change Orders will be accepted for not reviewing this information.

No consideration will be given for Change Order Requests based on any of the following:  
1. Items requiring clarification but not clearly indicated as an exception on the initial bid.  
2. Items requiring clarification but not submitted to Architect as a request for information during bidding.  
3. Items deemed to be industry standards for a particular system or assembly.  
4. Items that can reasonably be inferred from contract documents.

**PALMER**  
Engineering  
Professional Engineer  
1175 Peachtree St. NE, Suite 2000  
Atlanta, GA 30309  
P: 404.525.1175 F: 404.525.1176 www.palmer.com

**PRO BUILDING SYSTEMS**  
DESIGN BUILD CONTRACTORS

Client:  
**JIM ELLIS CADILLAC**  
5880 PEACHTREE BLVD  
ATLANTA, GA 30341

Project:  
**JIM ELLIS CADILLAC**  
5880 PEACHTREE BLVD  
ATLANTA, GA 30341

Project Number: 18123  
Drawn By: SRB  
Checked By: ARK  
Approved By: BP

Sheet Title:  
**FRAMING SECTIONS & DETAILS**

Sheet Number:  
**S401**

C:\Users\mshug\Documents\071717-IEC-Struct-REV17\_Mechia\_Augustin.rvt  
8/20/2016 3:05:41 PM