



Signed & Sealed

Copyright © 2014 YSM Design, P.C.
All rights reserved. Reproduction, computer file, text, color, notes and other documents and drawings prepared by YSM Design, P.C. are the property of YSM Design, P.C. and shall remain the property of YSM Design, P.C. without written permission of YSM Design, P.C. No portion may be reproduced or transmitted in any form or by any means, electronic or mechanical, including photocopying, recording, or by any information storage and retrieval system, without written permission of YSM Design, P.C.

Rev	Date	Comments

BID SET
Every Contractor or Subcontractor, by submitting a bid for this project declares that they have reviewed all aspects of this project and have included all work required to provide a complete project that meets all building codes.

If questions or discrepancies are found between these plans and the specifications, the Contractor shall be responsible for clarifying the same with the Architect before bids are due. These clarifications will be issued to all Bidders in Atlanta. No consideration will be given after the bid date for issues that could clearly have been ascertained during the Bidding Period.

Information to all Bidders
For more information about this bid, including a list of the most current documents, instructions to Bidders, Responsibility Chart, answers to RFIs, etc., go to project website. Note this address will be provided to bidders with invitation to bid.

It is the responsibility of ALL Bidders to become familiar with this site and the additional information that is contained there. If you do not have access to the internet you MUST contact your General Contractor for this information. No Change Orders will be accepted for not reviewing this information.

No consideration will be given for Change Order Requests based on any of the following:
1. Items requiring clarification but not clearly indicated as an exception on the initial bid.
2. Items requiring clarification but not submitted to Architect as a request for information during bidding.
3. Items deemed to be industry standard for a particular system or assembly.
4. Items that can reasonably be inferred from contract documents.



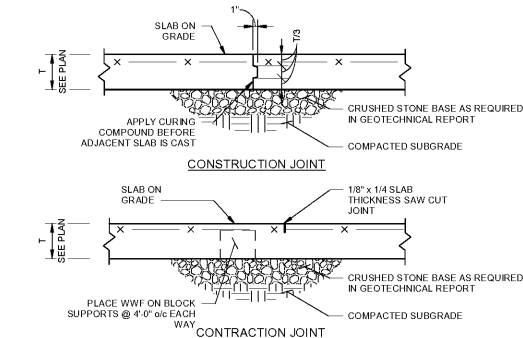
Client:
JIM ELLIS CADILLAC
5880 PEACHTREE BLVD
ATLANTA, GA 30341

Project:
JIM ELLIS CADILLAC
5880 PEACHTREE BLVD
ATLANTA, GA 30341

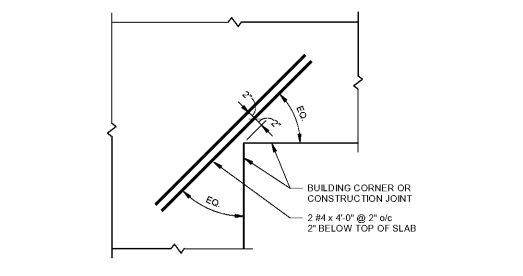
Project Number: 18123
Drawn By: TTN
Checked By: ARK
Approved By: BP

Sheet Title:
FOUNDATION SECTIONS AND DETAILS
Sheet Number:

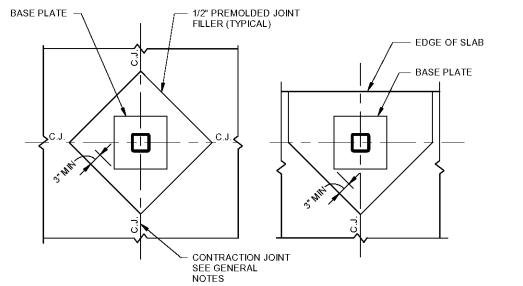
S301



1 TYPICAL SLAB ON GRADE JOINTS
N.T.S.

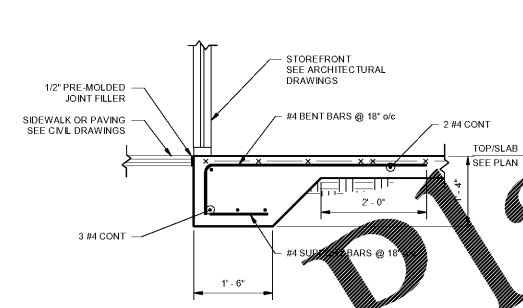


2 TYPICAL SLAB RE-ENTRANT CORNER
N.T.S.

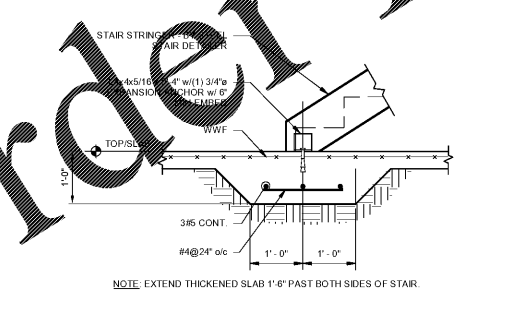


3 TYPICAL STEEL COLUMN ISOLATION JOINT
N.T.S.

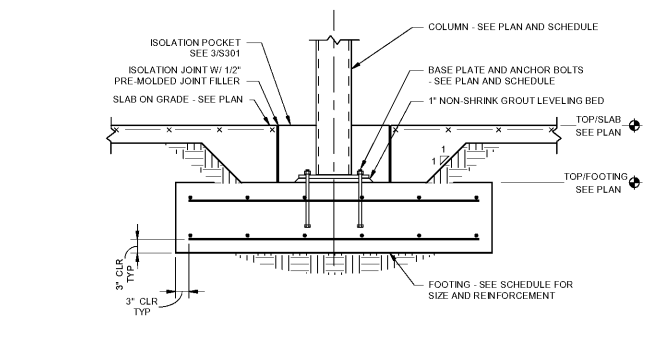
4 TYPICAL TURNDOWN
3/4" = 1'-0"



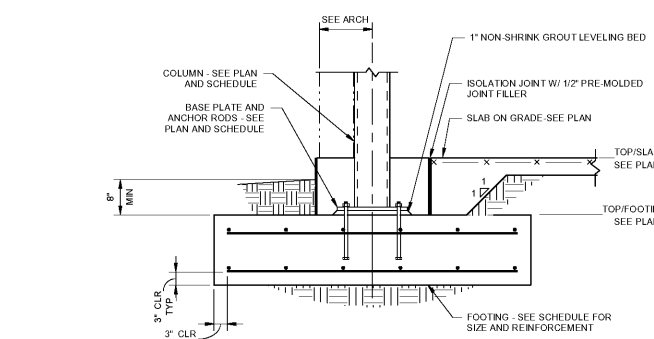
5 TYPICAL THICKENED SLAB AT STEEL STAIR LANDING
3/4" = 1'-0"



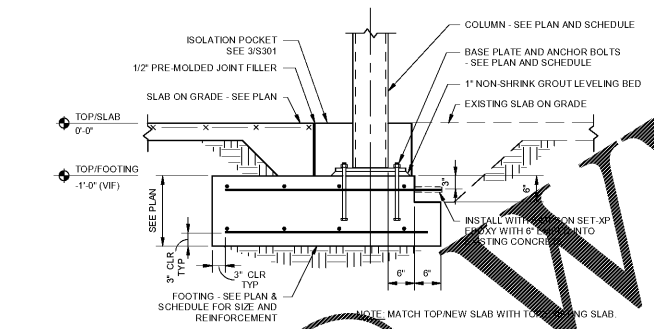
6 TYPICAL INTERIOR STEEL COLUMN AND ISOLATED FOOTING
3/4" = 1'-0"



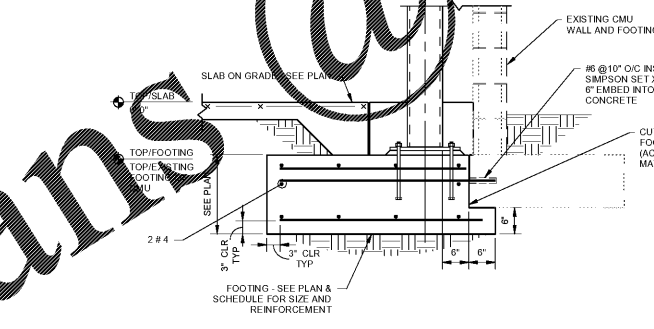
7 TYPICAL EXTERIOR STEEL COLUMN AND ISOLATED FOOTING
3/4" = 1'-0"



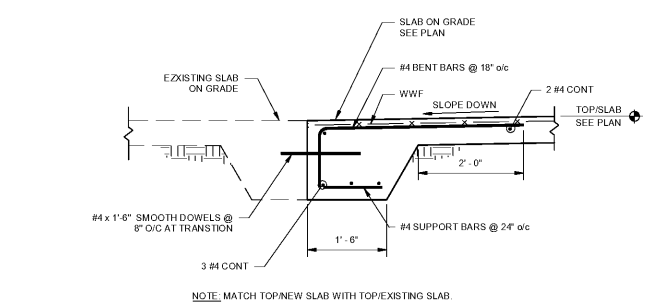
8 NEW STEEL COLUMN AND ISOLATED FOOTING ADJACENT TO EXISTING SLAB
3/4" = 1'-0"



9 NEW STEEL COLUMN AND ISOLATED FOOTING ADJACENT TO EXISTING CMU WALL
3/4" = 1'-0"



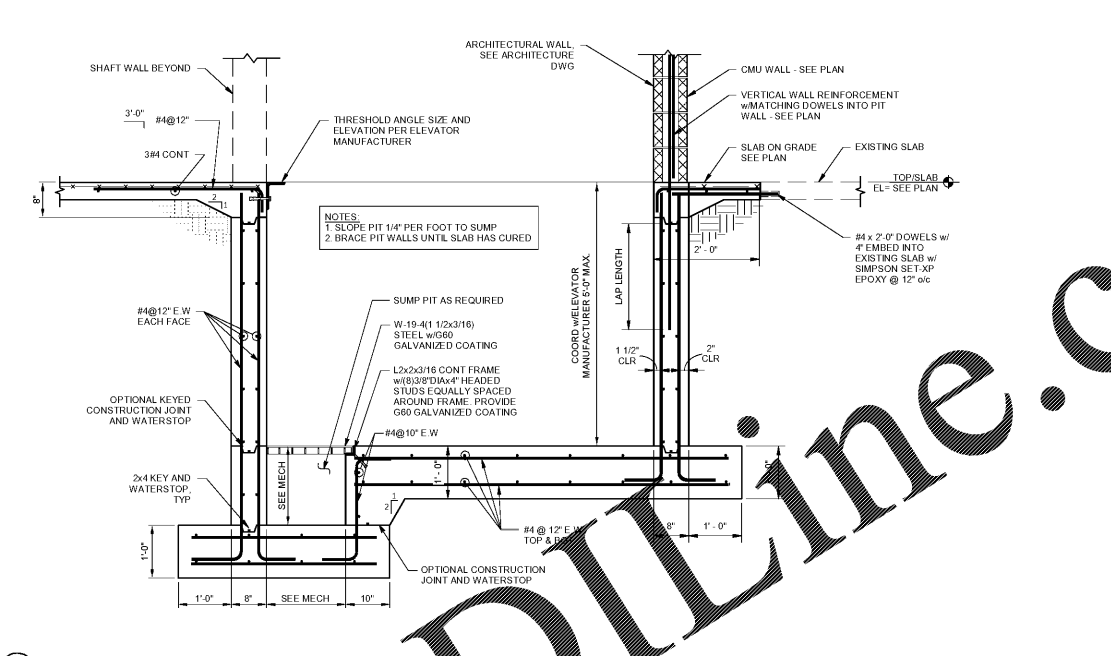
10 NEW SLAB ADJACENT TO EXISTING SLAB
3/4" = 1'-0"



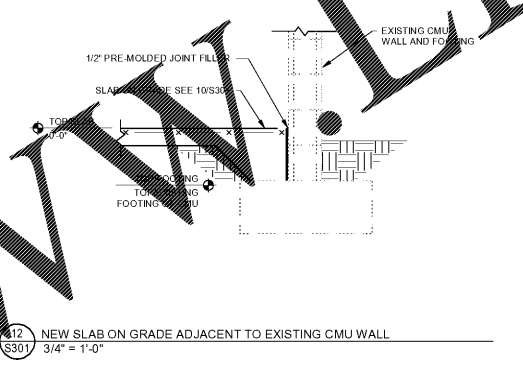
11 SECTION AT ELEVATOR
3/4" = 1'-0"



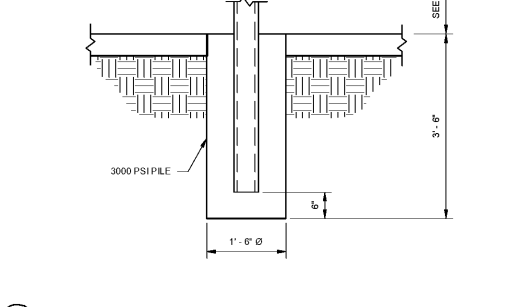
12 NEW SLAB ON GRADE ADJACENT TO EXISTING CMU WALL
3/4" = 1'-0"



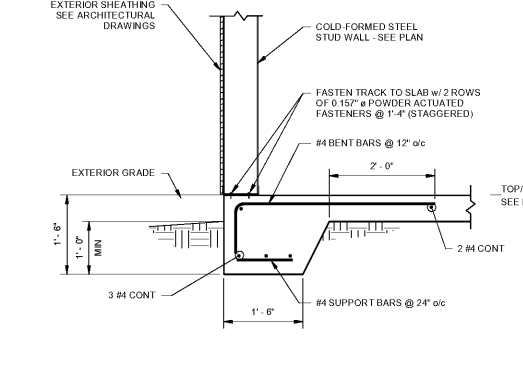
13 TYPICAL BOLLARD
N.T.S.



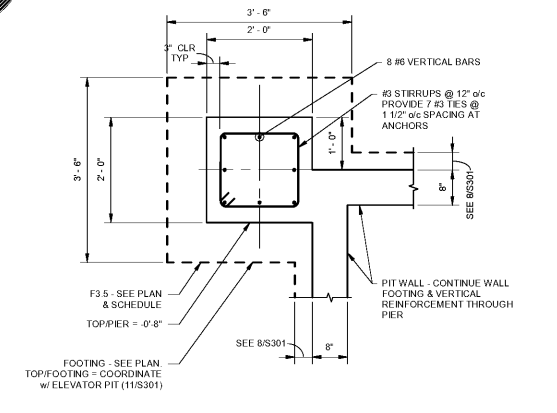
14 TYPICAL EXTERIOR COLD-FORMED STEEL STUD WALL ON TURNDOWN SLAB
3/4" = 1'-0"



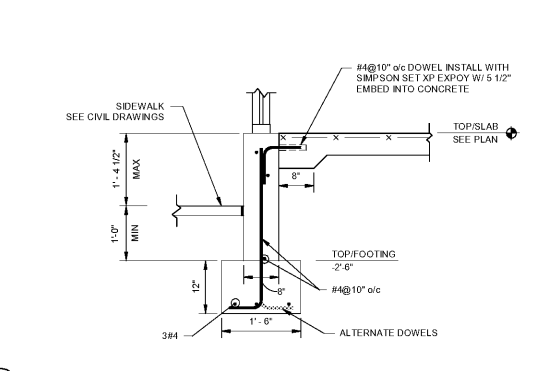
15 PIER AND FOOTING
3/4" = 1'-0"



16 STEM WALL TURNDOWN
3/4" = 1'-0"



17 PIER AND FOOTING
3/4" = 1'-0"



18 TYPICAL TURNDOWN
3/4" = 1'-0"



19 PIER AND FOOTING
3/4" = 1'-0"

C:\Users\mshay\Documents\18123-EC-Struct-REV17_Mechla_Augustin.rvt
 8/20/2018 3:57:41 PM

Order Plans @