



Signed & Sealed 12/31/2018

Copyright © 2014 YSM Design, P.C.  
All reports, plans, specifications, computer files, text data, notes and other documents and information prepared by YSM Design, P.C. are the property of YSM Design, P.C. and shall remain confidential. No part of this document may be reproduced, stored in a retrieval system, or transmitted in any form or by any means, electronic, mechanical, photocopying, recording, or by any information storage and retrieval system, without the prior written permission of YSM Design, P.C. This notice shall appear on all copies of this document as they are reproduced in whole or in part without written permission of YSM Design, P.C. This notice shall appear on all copies of this document as they are reproduced in whole or in part without written permission of YSM Design, P.C.

Rev	Date	Comments
-----	------	----------

**BID SET**  
Every Contractor or Subcontractor, by submitting a bid for this project declares that they have reviewed all aspects of this project and have included all work required to provide a complete project that meets all building codes.

If questions or discrepancies are found between these plans and specifications, the Contractor shall be responsible for clarifying the same with the Architect before bids are due. These clarifications will be issued to all Bidders in Atlanta. No consideration will be given after the bid date for issues that could clearly have been ascertained during the Bidding Period.

**Information to all Bidders**  
For more information about this bid, including a list of the most current documents, instructions to Bidders, Responsibility Chart, answers to RFIs, etc., go to project website. Note this address will be provided to bidders with invitation to bid.

It is the responsibility of ALL Bidders to become familiar with this site and the additional information that is contained there. If you do not have access to the internet you MUST contact your General Contractor for this information. No Change Orders will be accepted for not reviewing this information.

No consideration will be given for Change Order Requests based on any of the following:  
1. Items requiring clarification but not clearly indicated as an exception on the initial bid.  
2. Items requiring clarification but not submitted to Architect as a request for information during bidding.  
3. Items deemed to be industry standards for a particular system or assembly.  
4. Items that can reasonably be inferred from contract documents.



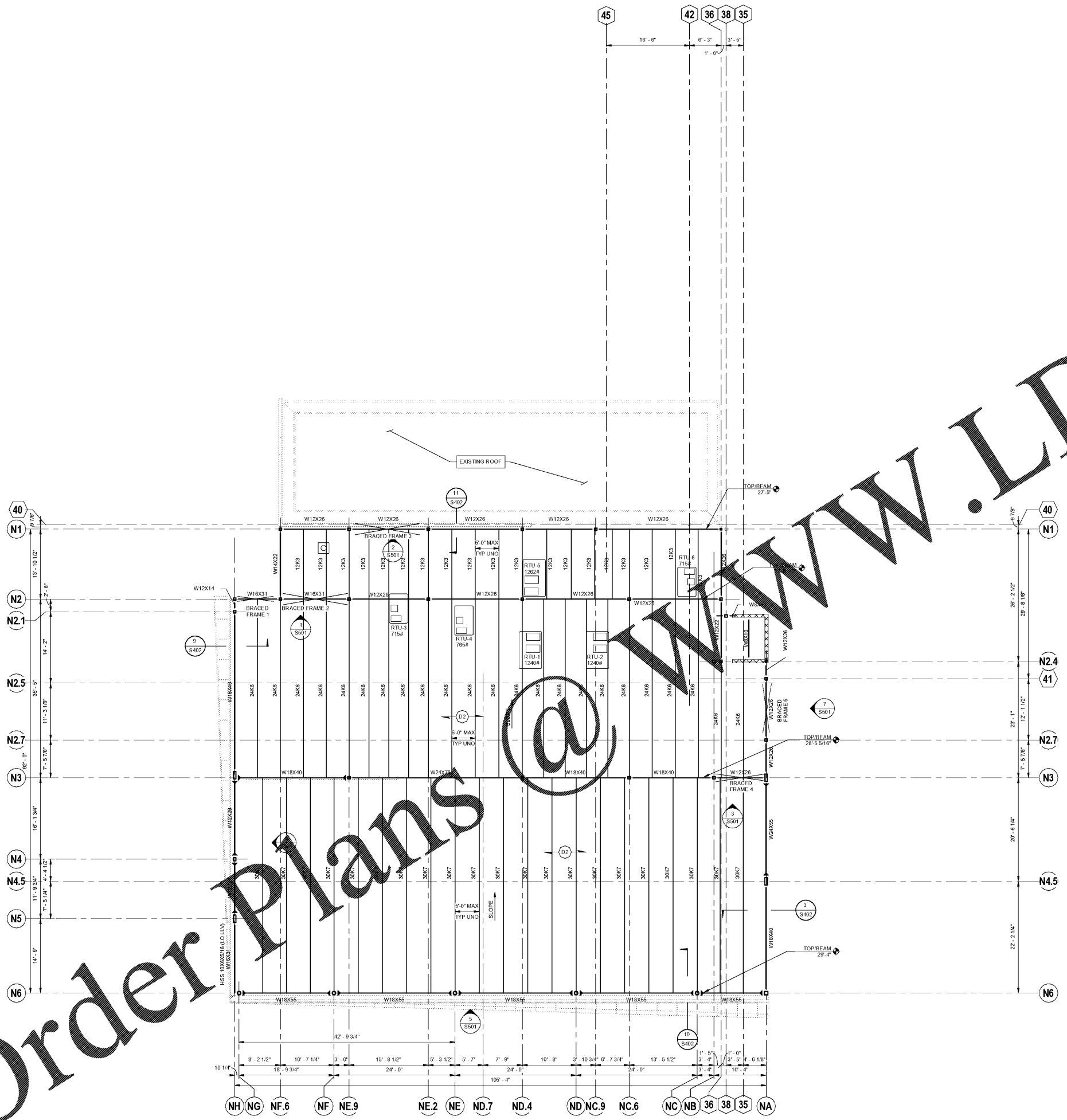
Client:  
**JIM ELLIS CADILLAC**  
5880 PEACHTREE BLVD  
ATLANTA, GA 30341

Project:  
**JIM ELLIS CADILLAC**  
5880 PEACHTREE BLVD  
ATLANTA, GA 30341

Project Number: 18123  
Drawn By: TTN  
Checked By: ARK  
Approved By: BP

Sheet Title:  
**ROOF PLAN**

Sheet Number:  
**S103**



**1 S103 ROOF FRAMING PLAN**  
1/8" = 1'-0"

**NOTES:**  
1. SEE ARCHITECTURAL DRAWINGS FOR DIMENSIONS, SLOPES, ELEVATIONS AND OTHER INFORMATION NOT SHOWN.  
2. JOIST MANUFACTURER TO DESIGN AND INSTALL JOISTS BRIDGING PER SJI RECOMMENDATIONS AND NOTED JOIST UPLIFT LOADS ON SHEET S501.  
3. INDICATES LOCATION WITHIN 2'-0" OF ROOF TOP MECHANICAL UNITS AND EQUIPMENT. FOR FRAMING DETAILS, SEE 15401 AND 65401. JOIST MANUFACTURER TO DESIGN JOISTS FOR RTU LOADS IN ADDITION TO PUBLISHED SJI LOAD CAPACITY FOR THE GIVEN SPAN AND DESIGNATION OF JOIST WHERE INDICATED.

**LEGENDS:**  
→ INDICATES MOMENT CONNECTION SEE S501.  
D2 INDICATES DECK DIRECTION OF 15822 GALVANIZED METAL ROOF DECK OVER 3 SPANS MIN. WITH #12 TEK SCREWS OVER SUPPORTS IN A 500 PATTERN AND (3) #10 TEK SCREWS SIDELAP FASTENERS. (DO NOT WELD).  
X INDICATES LOCATION OF X-BRACE FRAME SEE S500 SERIES.  
○ INDICATES EXISTING STRUCTURAL COLUMN LINES.  
○ INDICATES PROPOSED CONSTRUCTION COLUMN LINES.

C:\Users\mshay\Documents\18123\JEC-Struct-REV17\_Mechla\_Augustin.rvt  
8/30/2018 3:07 PM

Order Plans @ WWW.LDILine.com

NOT REPRODUCED FOR CONSTRUCTION