

Signed & Sealed 3/18/18

Copyright © 2014 YSM Design, P.C.
All reports, plans, specifications, computer files, text data, notes and other documents and instruments prepared by YSM Design, P.C. are the property of YSM Design, P.C. and shall remain the property of YSM Design, P.C. No part of this drawing may be reproduced or transmitted in any form or by any means, electronic, mechanical, photocopying, recording, or by any information storage and retrieval system, without the prior written permission of YSM Design, P.C. This work shall remain the property of YSM Design, P.C. as created and is only valid in the original drawing.

Rev	Date	Comments

BID SET
Every Contractor or Subcontractor, by submitting a bid for this project, declares that they have reviewed all aspects of this project and have included all work required to provide a complete project that meets all building codes.

If questions or discrepancies are found between tables, those should be submitted by the bidding General Contractor as a Request for Information before bids are due. These clarifications will be issued to all Bidders in Atlanta. No consideration will be given after the bid date for issues that could clearly have been answered during the Bidding Period.

Information to all Bidders
For more information about this bid, including a list of the most current documents, instructions to Bidders, Responsibility Chart, answers to RFI, etc., go to project website. Note this address will be provided to bidders with invitation to bid.

It is the responsibility of ALL Bidders to become familiar with this site and the additional information that is contained there. If you do not have access to the internet you MUST contact your General Contractor for this information. No Change Orders will be accepted for not reviewing this information.

No consideration will be given for Change Order Requests based on any of the following:
1. Items requiring clarification but not clearly indicated as an exception on the initial bid
2. Items requiring clarification but not submitted to Architect as a request for information during bidding
3. Items deemed to be industry standards for a particular system or assembly
4. Items that can reasonably be inferred from contract documents



Client:
JIM ELLIS CADILLAC

5880 PEACHTREE BLVD
ATLANTA, GA 30341

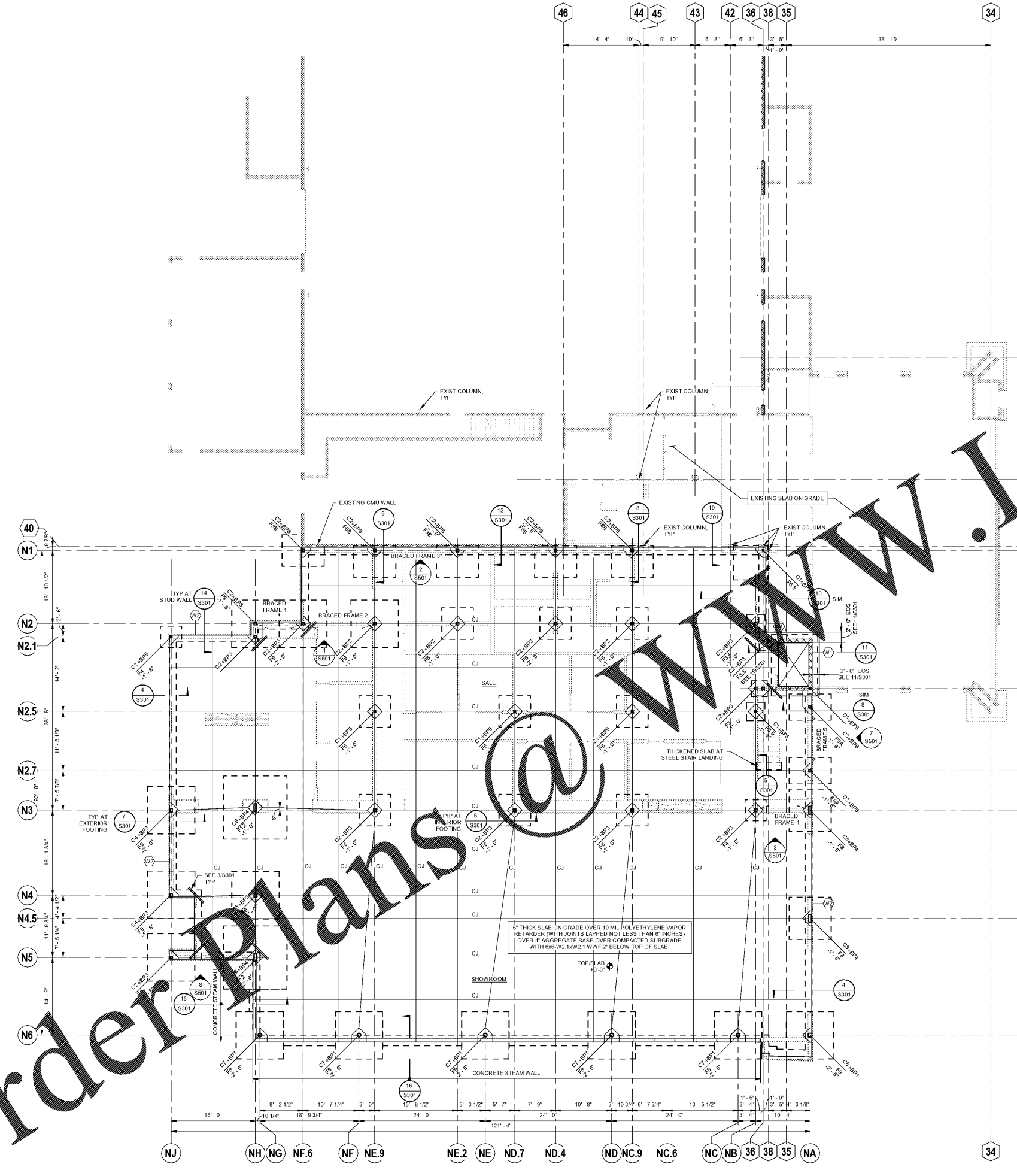
Project:
JIM ELLIS CADILLAC

5880 PEACHTREE BLVD
ATLANTA, GA 30341

Project Number: 18123
Drawn By: TTN
Checked By: ARK
Approved By: BP

Sheet Title:
FOUNDATION PLAN

Sheet Number:
S101



1 FOUNDATION PLAN - FIRST FLOOR
1/8" = 1'-0"

- NOTES**
- SEE ARCHITECTURAL DRAWINGS FOR DIMENSIONS, SLOPES, ELEVATIONS AND OTHER INFORMATION NOT SHOWN.
 - REFERENCED FINISH FLOOR ELEVATION = +0'-0" = 974.00'
 - U.N.G. TOP/EXTERIOR FOOTING = -1'-0" AND TOP/INTERIOR FOOTING = -1'-0"
 - COORDINATE ELEVATOR PIT FOOTING WITH THE ELEVATOR MANUFACTURER. SEE 11/S301.
 - FOR TOP/FOOTING OF COLUMNS ALONG GRID LINE N1 SEE S/S301 AND S/S301

- LEGENDS:**
- Cx INDICATES COLUMN SIZE. SEE SCHEDULE ON S303
 - Bx INDICATES COLUMN BASE PLATE. SEE DETAILS ON S303
 - Px INDICATES CONCRETE PIER - SEE S303 FOR MORE INFORMATION
 - Fx INDICATES FOOTING SIZE. SEE SCHEDULE S303
 - +x'-x" INDICATES TOP OF FOOTING ELEVATION IN REFERENCE TO FINISH FLOOR ELEVATION.
 - CJ INDICATES SLAB ON GRADE CONTRACTION JOINTS OR CONSTRUCTION JOINTS SEE DETAIL 1/S301.
 - X INDICATES LOCATION OF X-BRACE FRAME SEE S301 SERIES.
 - (W1) INDICATES 8" CMU FULL HEIGHT EXTERIOR SHEAR WALL w/ #5 @ 32" o/c VERTICAL REINFORCEMENT w/ #4 MATCHING DOWELS; GROUT CELLS SOLID AT REINFORCEMENT. SEE S302 FOR TRANSITION; PROVIDE 9/16" HORIZONTAL JOINT REINFORCEMENT @ 16" o/c VERTICALLY. PROVIDE 2" U' BLOCK BOND BEAM w/ 2#6 CONT IN GROUTED CELLS AT TOP OF EACH LEVEL, AT 8'-0" o/c MAX IN BETWEEN. SEE S302 FOR ADDITIONAL INFORMATION.
 - AT OPENING PROVIDE 8" CMU U BLOCK LINTEL w/ #5 IN FULLY GROUTED CELLS. PROVIDE 1" REBARING AT EACH END FOR THE LINTEL GROUT CELLS SOLID FROM BEARING TO FOUNDATION w/ #5 IN CELLS.
 - (W2) EXTERIOR NON-LOAD BEARING STUD WALL. 800S162-54 @ 16" o/c WITH HORIZONTAL BRACING @ 4'-0" o/c. SEE HEADER SCHEDULE FOR OPENING IN S303
 - (C) INDICATES EXISTING STRUCTURAL COLUMN LINES
 - (O) PROPOSED CONSTRUCTION COLUMN LINES

C:\Users\mshay\Documents\18123 - JEC-Struct-REV17_Mechina Augustin.rvt
8/30/2016 3:57:41 PM

Order Plans @ www.LDILine.com

NOT REPRODUCED FOR CONSTRUCTION