

CONCRETE WASHDOWN PIT NOTE:

THE CONCRETE WASHDOWN PIT IS NOT FOR THE DUMPING OF EXCESS CONCRETE WITHIN CONCRETE. IT IS TO BE USED FOR THE WASHING OF CONCRETE TIRES AND TROUGHS AND TOOLS. DEBRIS FROM CONCRETE WASHDOWN PIT TO BE DISPOSED OF IN ON-SITE CONSTRUCTION DEBRIS CONTAINER FOR REMOVAL FROM THE SITE.

THIS PROPERTY DOES NOT LIE IN A 100-YR FLOOD ZONE AS SHOWN ON FIRM COMMUNITY PANEL NO. 13089C 0014 J, EFFECTIVE DATE MAY 16, 2013.

EROSION AND SEDIMENTATION CONTROL MEASURES AND PRACTICES SHALL BE MAINTAINED AT ALL TIMES. ADDITIONAL EROSION AND SEDIMENTATION CONTROL MEASURES AND PRACTICES SHALL BE INSTALLED IF DEEMED NECESSARY BY ON-SITE INSPECTION.

ALL EROSION AND SEDIMENTATION CONTROL MEASURES WILL BE CHECKED DAILY AND ANY DEFICIENCIES NOTED WILL BE CORRECTED BY THE END OF EACH DAY. ADDITIONAL EROSION AND SEDIMENTATION CONTROL MEASURES AND PRACTICES SHALL BE INSTALLED IF DEEMED NECESSARY BY ON-SITE INSPECTION.

ALL FILL SLOPES WILL HAVE SILT FENCE AT TOE OF SLOPES.

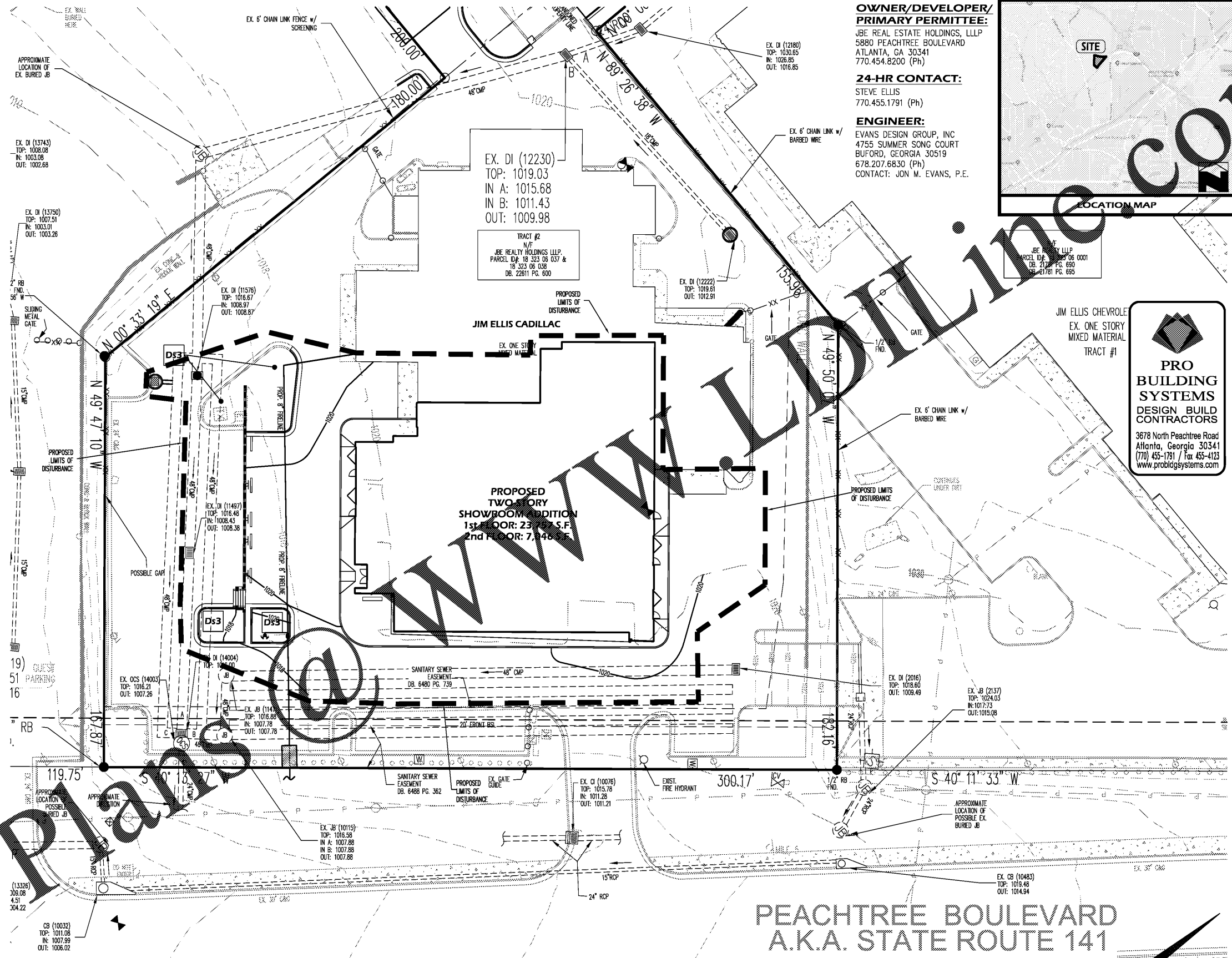
EROSION CONTROL NOTES:

1. EROSION CONTROL MEASURES WILL BE MAINTAINED AT ALL TIMES. IF FULL IMPLEMENTATION OF THE APPROVED PLAN DOES NOT PROVIDE FOR EFFECTIVE EROSION CONTROL, ADDITIONAL EROSION AND SEDIMENT CONTROL MEASURES SHALL BE IMPLEMENTED TO CONTROL OR TREAT THE SEDIMENT SOURCE.
2. ANY DISTURBED AREA LEFT EXPOSED FOR A PERIOD GREATER THAN 14 DAYS SHALL BE STABILIZED WITH MULCH OR TEMPORARY SEEDING.
3. THE ESCAPE OF SEDIMENT FROM THE SITE SHALL BE PREVENTED BY THE INSTALLATION OF EROSION AND SEDIMENT CONTROL MEASURES AND PRACTICES PRIOR TO LAND DISTURBING ACTIVITIES.

GSWCC
 GEORGIA SOIL AND WATER CONSERVATION COMMISSION
JON M. EVANS, P.E.
 Level II Certified Design Professional
 CERTIFICATION NUMBER 0000010877
 ISSUED: 05-16-2008 EXPIRES: 05-16-2021

GEORGIA 811
 Utilities Protection Center, Inc.
 Know what's below
 Call before you dig

UTILITY DISCLAIMER:
 IN ACCORD WITH THE REQUIREMENTS TO BE MET UNDER THIS CONTRACT, THE DRAWINGS SHOW THE LOCATION OF UTILITIES AS SHOWN ON RECORD PLANS AND FIELD SURVEY. THE ENGINEER HAS CONDUCTED VISUAL INSPECTIONS OF THE PIPES, POLE LINES, CONDUITS, AND OTHER STRUCTURES WHICH EXIST ALONG THE LINE OF THE WORK, BOTH AT AND BELOW THE SURFACE OF THE GROUND. THE ENGINEER AND THE OWNER EXPRESSLY DISCLAIM ANY RESPONSIBILITY FOR THE ACCURACY OR COMPLETENESS OF THE INFORMATION GIVEN ON THE DRAWINGS WITH REGARD TO EXISTING STRUCTURES. THE CONTRACTOR WILL NOT BE ENTITLED TO ANY EXTRA COMPENSATION ON ACCOUNT OF ANY INACCURACY OR INCOMPLETENESS OF SUCH INFORMATION, SAID INFORMATION BEING INDICATED ONLY FOR THE CONVENIENCE OF THE CONTRACTOR, WHO MUST VERIFY THE INFORMATION TO HIS OWN SATISFACTION. THE GIVING OF THIS INFORMATION UPON THE CONTRACTOR'S ACCEPTANCE WILL NOT RELIEVE THE CONTRACTOR OF HIS OBLIGATION TO SUPPORT AND PROTECT ALL PIPES, CONDUITS, AND OTHER STRUCTURES. THE CONTRACTOR SHALL LOCATE ALL UNDERGROUND OBSTRUCTIONS PRIOR TO EXCAVATION SO AS TO PREVENT ANY DAMAGE TO THOSE SERVICES OR OTHER UTILITIES. ANY SUCH DAMAGES MUST BE REPAIRED WITHOUT DELAY AND THE COST OF SUCH REPAIRS MUST BE BORNE BY THE CONTRACTOR.



RECEIVING WATERS:
 NANCY CREEK
 (IMPAIRED STREAM, >1 MILE DOWNSTREAM)

NOTE:
 AMENDMENTS/REVISIONS TO THE ESW&C PLAN WHICH HAVE A SIGNIFICANT EFFECT ON BMPs WITH A HYDRAULIC COMPONENT MUST BE CERTIFIED BY THE DESIGN PROFESSIONAL.

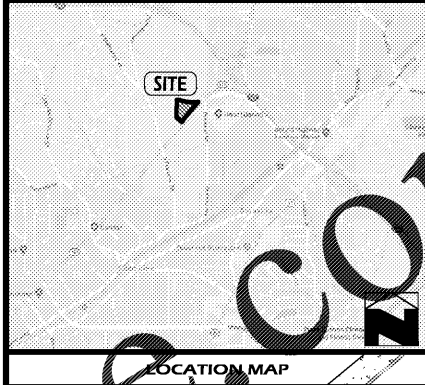
TOTAL SITE AREA = 3.59 ACRES
DISTURBED AREA = 0.71± ACRES

THE EXTENT AND LOCATION OF EROSION CONTROL MEASURES SHOWN ARE THE ESTIMATED OF WHAT IS REQUIRED. ADDITIONAL EROSION CONTROL MEASURES MAY BE REQUIRED DUE TO THE ACTUAL FIELD CONDITIONS, AND WILL BE INSTALLED AT THE OWNER/DEVELOPER'S EXPENSE WHEN DIRECTED BY THE PROPER GOVERNING AUTHORITY.

OWNER/DEVELOPER/ PRIMARY PERMITTEE:
 JBE REAL ESTATE HOLDINGS, LLLP
 5880 PEACHTREE BOULEVARD
 ATLANTA, GA 30341
 770.454.8200 (Ph)

24-HR CONTACT:
 STEVE ELLIS
 770.455.1791 (Ph)

ENGINEER:
 EVANS DESIGN GROUP, INC
 4755 SUMMER SONG COURT
 BUFORD, GEORGIA 30519
 678.207.6830 (Ph)
 CONTACT: JON M. EVANS, P.E.



PRO BUILDING SYSTEMS
 DESIGN BUILD CONTRACTORS
 3678 North Peachtree Road
 Atlanta, Georgia 30341
 (770) 455-1791 / Fax 455-4125
 www.probuildingsystems.com

Evans Design Group, Inc.
 Civil Engineering /
 Site Planning /
 Land Development Services
 4755 Summer Song Court
 Buford, GA 30519
 (Ph) 678.207.6830
 jevans@evansdg.com



PROJECT NAME
JIM ELLIS CADILLAC

5880 PEACHTREE BLVD
L.L. 323, 18th DISTRICT
CITY OF CHAMBLEE
GEORGIA

DATE:
03-22-18

DESIGN BY JME
DRAWN BY JME
CHECKED BY JME

Not Released For Construction
 Released For Construction

OWNER/DEVELOPER

© COPYRIGHT 2018
 EVANS DESIGN GROUP, INC.
 ALL RIGHTS RESERVED.
 THESE CONSTRUCTION DOCUMENTS AND PERMITTED REPRODUCTIONS, IN WHOLE OR IN PART, ARE INSTRUMENTS OF SERVICE AND ARE THE SOLE PROPERTY OF EVANS DESIGN GROUP, INC. UNLESS OTHERWISE AGREED TO, THEY SHALL NOT BE REPRODUCED OR CONVEYED IN ANY MANNER NOR ARE THEY TO BE USED FOR ANY OTHER PROJECTS OTHER THAN THAT SPECIFICALLY INDICATED HEREIN WITHOUT WRITTEN PERMISSION FROM AND DUE COMPENSATION TO EVANS DESIGN GROUP, INC.

REVISIONS

1	10-16-2018	FIRST SUBMITTAL
2	11-16-2018	CITY COMMENTS

JOB NUMBER:
18-011

SHEET TITLE
E.C. PLAN
PHASE III
C-11

