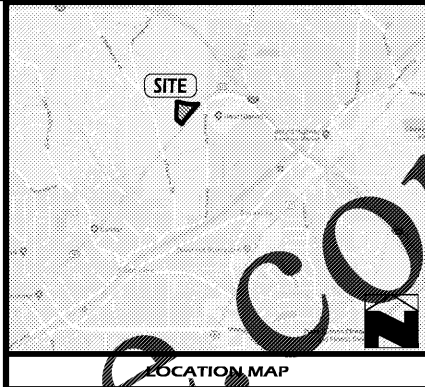
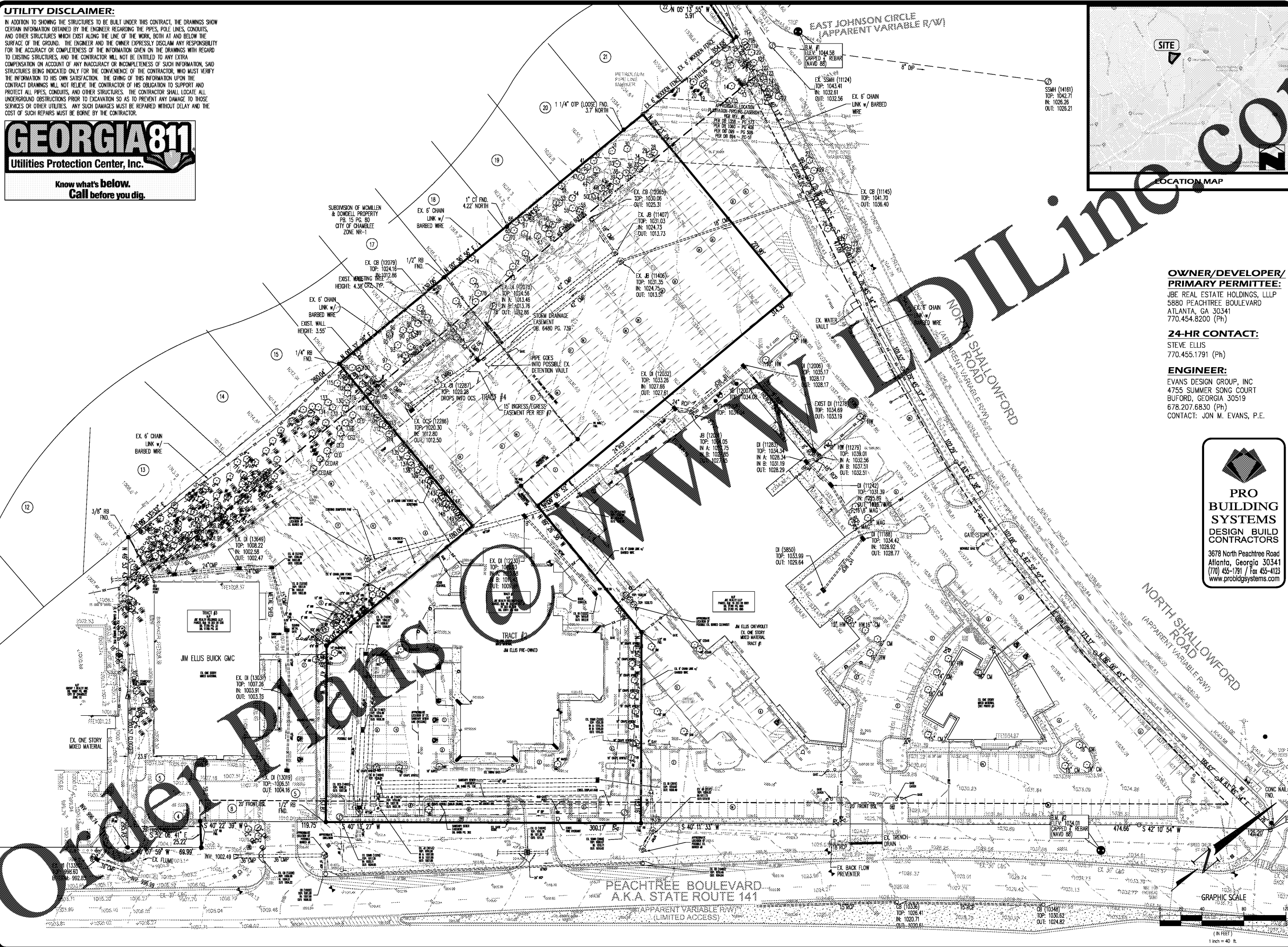


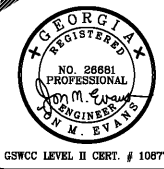
UTILITY DISCLAIMER:

IN ADDITION TO SHOWING THE STRUCTURES TO BE BUILT UNDER THIS CONTRACT, THE DRAWINGS SHOW CERTAIN INFORMATION OBTAINED BY THE ENGINEER REGARDING THE PIPES, POLE LINES, CONDUITS, AND OTHER STRUCTURES WHICH EXIST ALONG THE LINE OF THE WORK, BOTH AT AND BELOW THE SURFACE OF THE GROUND. THE ENGINEER AND THE OWNER EXPRESSLY DISCLAIM ANY RESPONSIBILITY FOR THE ACCURACY OR COMPLETENESS OF THE INFORMATION GIVEN ON THE DRAWINGS WITH REGARD TO EXISTING STRUCTURES, AND THE CONTRACTOR WILL NOT BE ENTITLED TO ANY EXTRA COMPENSATION ON ACCOUNT OF ANY INACCURACY OR INCOMPLETENESS OF SUCH INFORMATION, SAID STRUCTURES BEING INDICATED ONLY FOR THE CONVENIENCE OF THE CONTRACTOR, WHO MUST VERIFY THE INFORMATION TO HIS OWN SATISFACTION. THE GIVING OF THIS INFORMATION UPON THE CONTRACT DRAWINGS WILL NOT RELIEVE THE CONTRACTOR OF HIS OBLIGATION TO SUPPORT AND PROTECT ALL PIPES, CONDUITS, AND OTHER STRUCTURES. THE CONTRACTOR SHALL LOCATE ALL UNDERGROUND OBSTRUCTIONS PRIOR TO EXCAVATION SO AS TO PREVENT ANY DAMAGE TO THOSE SERVICES OR OTHER UTILITIES. ANY SUCH DAMAGES MUST BE REPAIRED WITHOUT DELAY AND THE COST OF SUCH REPAIRS MUST BE BORNE BY THE CONTRACTOR.

GEORGIA811
 Utilities Protection Center, Inc.
 Know what's below.
 Call before you dig.



Evans Design Group, Inc.
 Civil Engineering /
 Site Planning /
 Land Development Services
 4755 Summer Song Court
 Buford, GA 30519
 (Ph) 678.207.6830
 jevans@evansdg.com



PROJECT NAME
JIM ELLIS CADILLAC

**OWNER/DEVELOPER/
 PRIMARY PERMITTEE:**

JBE REAL ESTATE HOLDINGS, LLLP
 5880 PEACHTREE BOULEVARD
 ATLANTA, GA 30341
 770.454.8200 (Ph)

24-HR CONTACT:

STEVE ELLIS
 770.455.1791 (Ph)

ENGINEER:

EVANS DESIGN GROUP, INC
 4755 SUMMER SONG COURT
 BUFORD, GEORGIA 30519
 678.207.6830 (Ph)
 CONTACT: JON M. EVANS, P.E.

PRO BUILDING SYSTEMS
 DESIGN BUILD CONTRACTORS
 3678 North Peachtree Road
 Atlanta, Georgia 30341
 (770) 455-1791 / Fax 455-4123
 www.probuildingsystems.com

DATE:
03-22-18

DESIGN BY: JME
 DRAWN BY: JME
 CHECKED BY: JME

Not Released For Construction
 Released For Construction

OWNER/DEVELOPER

© COPYRIGHT 2018
 EVANS DESIGN GROUP, INC.
 ALL RIGHTS RESERVED.
 THESE CONSTRUCTION DOCUMENTS AND PERMITTED REPRODUCTIONS IN WHOLE OR IN PART, ARE INSTRUMENTS OF SERVICE AND ARE THE SOLE PROPERTY OF EVANS DESIGN GROUP, INC. UNLESS OTHERWISE AGREED TO, THEY SHALL NOT BE REPRODUCED OR CONVEYED IN ANY MANNER NOR ARE THEY TO BE USED FOR ANY OTHER PROJECTS OTHER THAN THAT SPECIFICALLY INDICATED HEREIN WITHOUT WRITTEN PERMISSION FROM AND DUE COMPENSATION TO EVANS DESIGN GROUP, INC.

REVISIONS

1	10-16-2018	FIRST SUBMITTAL
2	11-15-2018	CITY COMMENTS

JOB NUMBER:
18-011

SHEET TITLE
OVERALL EXISTING CONDITIONS

C-2