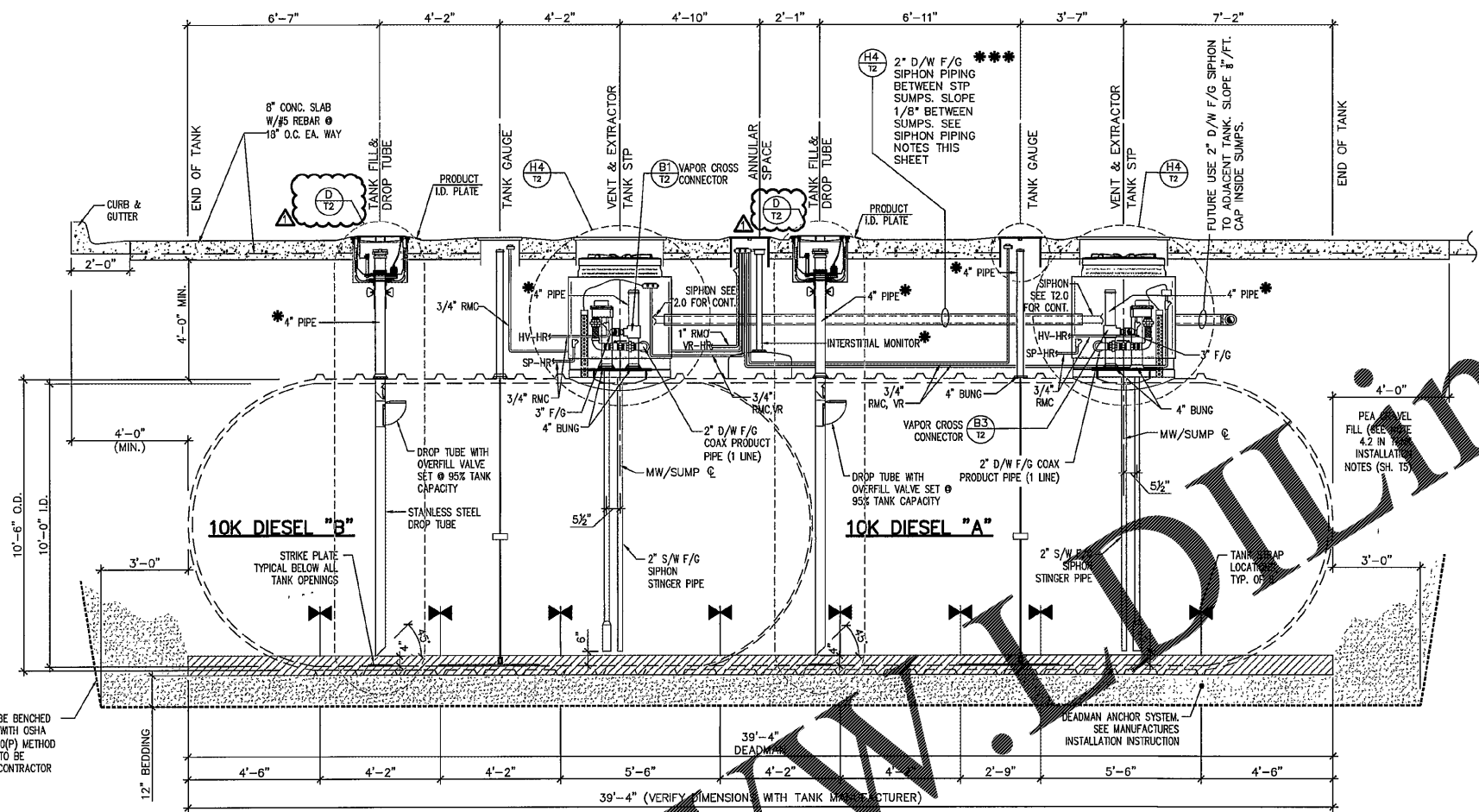
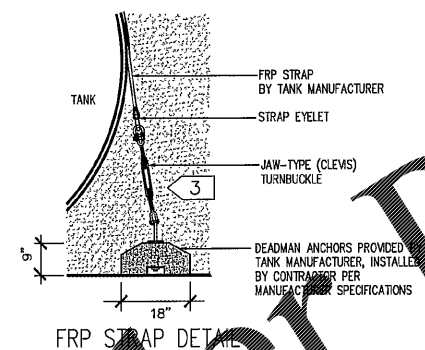
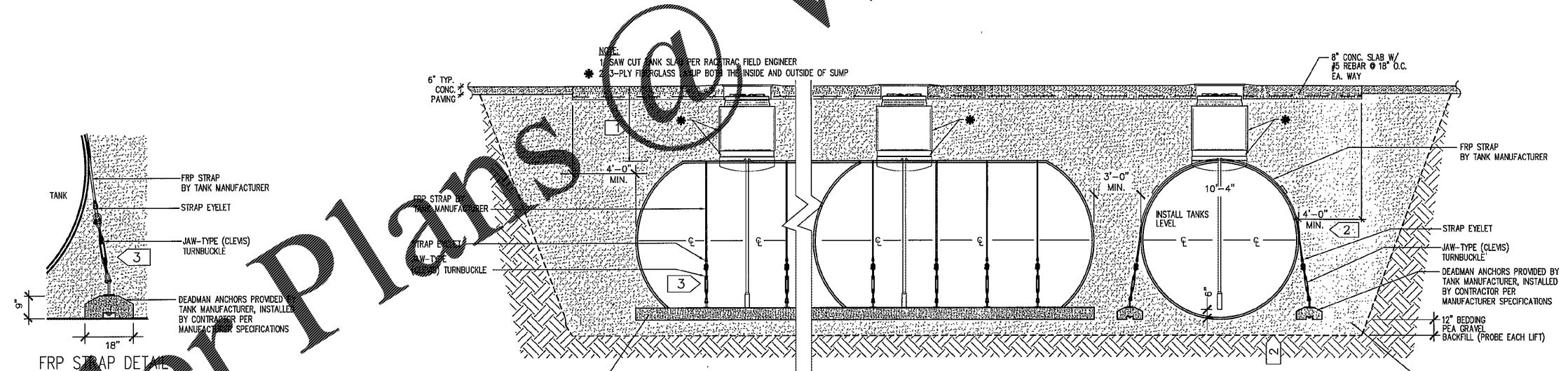


- * ALL RISER PIPES & FITTINGS ARE TO BE COATED WITH A BITUMINOUS COATING AND WRAPPED W/3M TAPE FOR CORROSION PROTECTION---SEE NOTES SHEET RT-T4.0
- ** CONFIRM BURIAL DEPTH WITH RACETRAC PROJECT MANAGER
- *** SIPHON PIPING NOTES:
 1. 2" D/W F/G SIPHON PIPING SLOPED 1/8" PER FT. BETWEEN SUMPS.
 2. SIPHON PIPING INSTALLATION TO BE IN ACCORDANCE WITH API 1615, SECTION 9.2.4 DETAIL SHEET T2.0



EXCAVATION TO BE BENCHED IN ACCORDANCE WITH OSHA 29 CFR 1926-950(P) METHOD OF COMPLIANCE TO BE DETERMINED BY CONTRACTOR

C LONGITUDINAL TANK SECTION
 T1.3 20,000 GALLON TANK 3/8"=1'-0"



- 1 4' MINIMUM COVER. DEPTH TO INCREASE AS REQUIRED TO MAINTAIN 1/8" PER FOOT FALL ON VAPOR RECOVERY LINE FROM ISLAND TO MANIFOLD.
- 2 ALL TANK PITS AND PIPE TRENCHES TO BE LINED WITH FILTER FABRIC CLOTHS AND LAPPED OVER THE TOP OF BURIED TANKS AND PIPES PRIOR TO BACKFILLING.
- 3 UNIFORMLY TIGHTEN EACH ANCHOR STRAP WITH TURNBUCKLES STRAP MUST BE SNUG WITHOUT CAUSING TANK DEFLECTION. CHECK DEFLECTION BEFORE AND AFTER SECURING STRAPS. APPLY HEAVY BITUMINOUS COATING TO TURNBUCKLES AND ATTACHMENTS TO PREVENT CORROSION.

D TYPICAL TANKFIELD SECTION AND ANCHORING DETAILS
 T1.3 1/4"=1'-0"

ISSUE/REVISION RECORD

DATE	DESCRIPTION
7/18/15	REV TANK FILL PER CLIENT

Racetrac
 RACETRAC PETROLEUM, INC.
 8226 CUMBERLAND BOULEVARD
 SUITE 100
 ATLANTA, GEORGIA 30339
 (770) 431-7600

PROJECT NAME
GRIFFIN

GRIFFIN GEORGIA
 MARTIN LUTHER KING
 and ZEBULON ROAD

RACETRAC PROJECT NUMBER
1242

PLAN SERIES
2011 BR-RH-M90 0801

PLAN MODIFICATION NOTICE

NO MODIFICATIONS APPLIED
 MODIFICATIONS APPLY

SPB NO. / A DATE / A

STANDARD PLAN BULLETINS (SPB) MODIFY THE PLAN SERIES SET NOTED ABOVE. THE SPB GIVEN ABOVE REPRESENTS THE LATEST MODIFICATION INCORPORATED TO THIS PLAN SERIES SET. CONTACT RACETRAC ENGINEERING AND CONSTRUCTION FOR ALL BULLETINS.

PROFESSIONAL SEAL



RICHARD R. MORRIS
 GA REG # PE013997

PROJECT NUMBER
17179

SHEET TITLE
TANK DETAILS

SHEET NUMBER

RT-T1.3

Order Plans @ www.racetrac.com