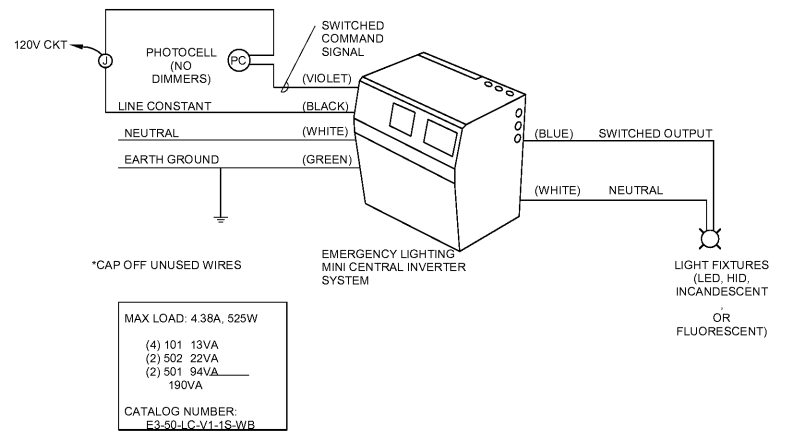


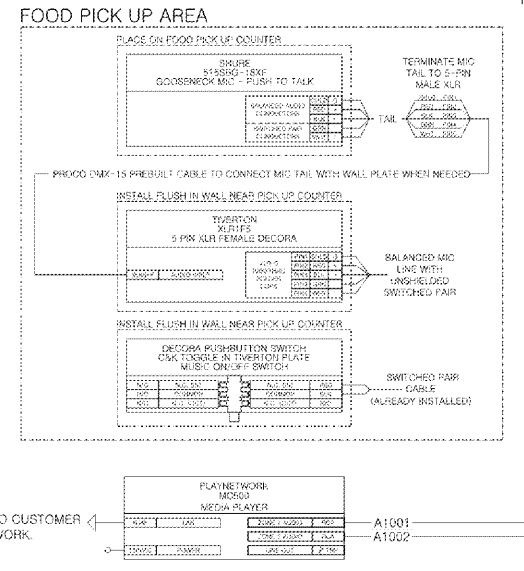
**GENERAL NOTES FOR LIGHT SENSOR INSTALLATION**

1. WIRING FOR THE LIGHT SENSOR MUST BE #18/3 SHIELDED CABLE AND SHALL BE RUN IN A SEPARATE (ELECTRICAL CONTRACTOR SUPPLIED) CONDUIT TO THE ROOF.
2. THE "SHIELD CONDUCTOR" AT THE LIGHT SENSOR JUNCTION BOX MUST BE CUT OFF AT THE INSULATION AND TAPED TO PREVENT GROUNDING. THE "SHIELD CONDUCTOR" AT THE LIGHTING MANAGER MUST BE GROUNDED TO THE MOUNTING SCREEN.
3. THE LIGHT SENSOR "EYE" MUST BE INSTALLED TO FACE THE NORTHERN SKY AWAY FROM ANY OTHER OUTSIDE LIGHTING SOURCES SUCH AS CANOPY LIGHTS, POLE LIGHTS, OR SECURITY LIGHTS. THE LIGHT SENSOR MUST BE MOUNTED AT LEAST 18" ABOVE ROOF LINE.
4. \*\*SPECIAL NOTE - TEST AND INSPECT / ELECTRICAL CONTRACTOR\*\* THE LMZ10SEN1 INCLUDES THE LIGHT SENSOR INSTALLED IN AN ALB1 CONDUIT HOUSING WITH 50 FT. OF #18/3 SHIELDED CABLE. THE LMZ10SEN1 ASSEMBLY IS TO BE PRE-WIRED TO THE "FIELD WIRING" SIDE OF TERMINAL STRIP BY TEST & INSPECT AT SQUARE D TO CHECK OPERATION. AFTER CHECKOUT IS COMPLETE - TEST & INSPECT TO SECURE LMZ10SEN1 ASSEMBLY IN CABINET FOR SHIPMENT, WITH WIRES LEFT CONNECTED. THE ELECTRICAL CONTRACTOR SHALL COMPLETE INSTALLATION OF LIGHT SENSOR AT JOBSITE USING INFORMATION ABOVE.

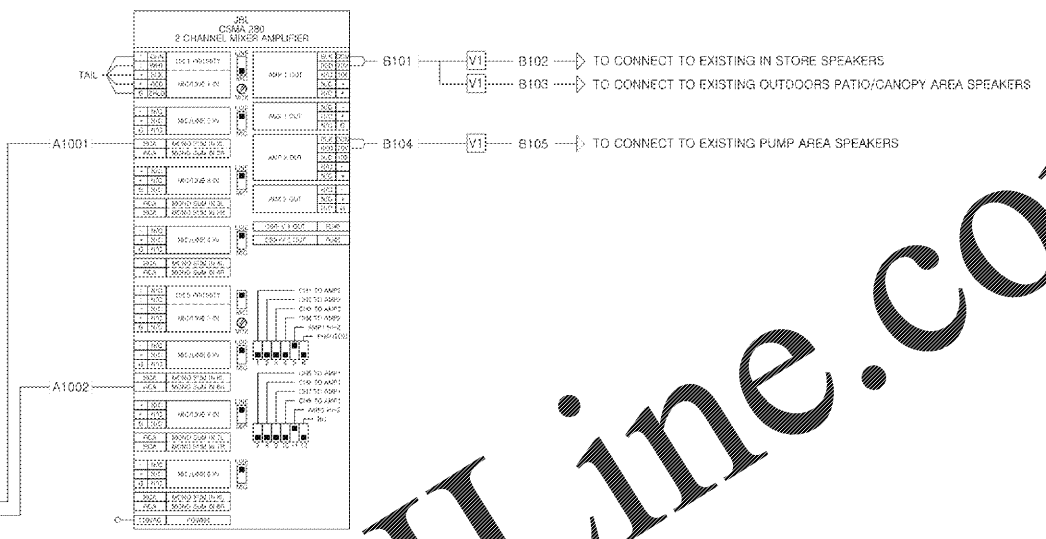
6 LIGHT SENSOR FIELD INSTALLATION DETAIL  
N.T.S.



3 INVERTER WIRING DIAGRAM  
N.T.S.

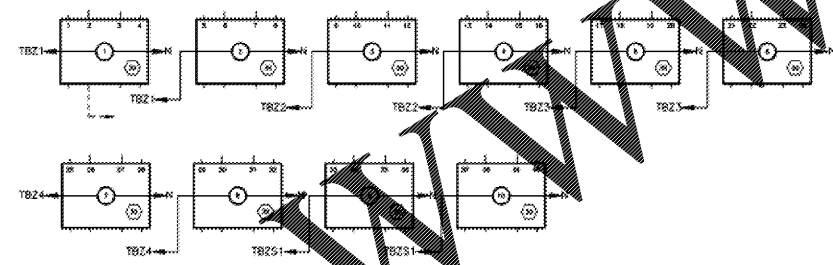


7 FOOD PICK UP AREA MICROPHONE DETAIL  
3/4" = 1'-0"

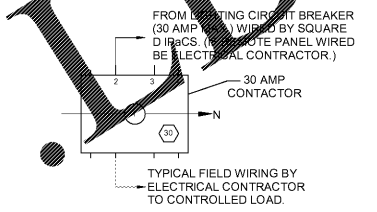


**GENERAL NOTES FOR LIGHTING CONTROLS**

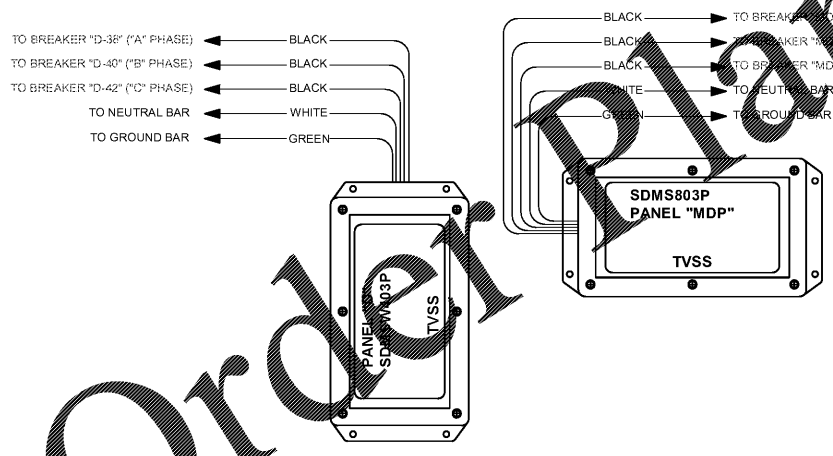
- (LOC 1) ALL DASHED LINES REPRESENT FIELD WIRING BY CONTRACTOR.
- (LOC 2) OVERCURRENT PROTECTION FOR EACH LIGHTING CIRCUIT TO BE CONTROLLED BY THE BRAC LIGHTING MANAGER IS PROVIDED BY OTHERS. THE OVERCURRENT PROTECTION SHALL BE LIMITED TO 35 AMPS MAXIMUM FOR EACH CIRCUIT.
- (LOC 3) CONTROL FUSE 1"1" FOR LIGHTING CONTROL POWER MUST BE "5 AMP" REPLACE ONLY WITH THE SAME TYPE AND RATING OF FUSE.
- (LOC 4) CONTROL FUSE "1/2" ON LIGHTING CONTROL STRIP MUST BE "2 AMP" REPLACE ONLY WITH THE SAME TYPE AND RATING OF FUSE.
- (LOC 5) ALL FIELD WIRING TERMINALS MUST BE WIRED WITH A MINIMUM INSULATION RATING OF 90°C IF CIRCUIT IS RATED LESS THAN 100 AMPS OR A MINIMUM INSULATION RATING OF 75°C IF CIRCUIT IS RATED OVER 100 AMPS.
- (LOC 6) ALL CONTACTORS SHALL BE WIRED INDEPENDENTLY TO A TERMINAL BLOCK AT THE OUTPUT TERMINAL BLOCK INTERFACE.
- (LOC 7) THE WIRES FROM ALL CONTACTORS (1 THRU 10) MUST BE NUMBERED AT THE OUTPUT TERMINAL BLOCK INTERFACE.
- (LOC 8) THE CONTACTOR CONTROL WIRING CHART SHOWS OUTPUTS 1 THRU 10 OF THE SQUARE D 270 LIGHTING MANAGER. THIS CHART ALSO SHOWS THE NUMBER OF CONTACTORS WIRED TO EACH OUTPUT AT THE FACTORY. THIS CONFIGURATION MAY BE FIELD MODIFIED BY MOVING THE INDEPENDENTLY WIRED CONTACTOR COIL WIRE TO THE CORRESPONDING TERMINAL BLOCK OF THE DESIRED OUTPUT CONTROL CHANNEL.
- (LOC 9) ALL MAIN DISCONNECT AND BRANCH CIRCUIT PROTECTION SHALL BE AS SCHEDULED ON SHEET E300.
- (LOC 10) INSTALLER CONTRACTOR NOTE: DO NOT REMOVE TOPPER LIGHTING CONTROL WIRES. DO NOT CONNECT ANY OTHER CIRCUITS TO THIS CONTACTOR POLE.



4 TYPICAL CONTACTOR WIRING DETAIL  
12" = 1'-0"

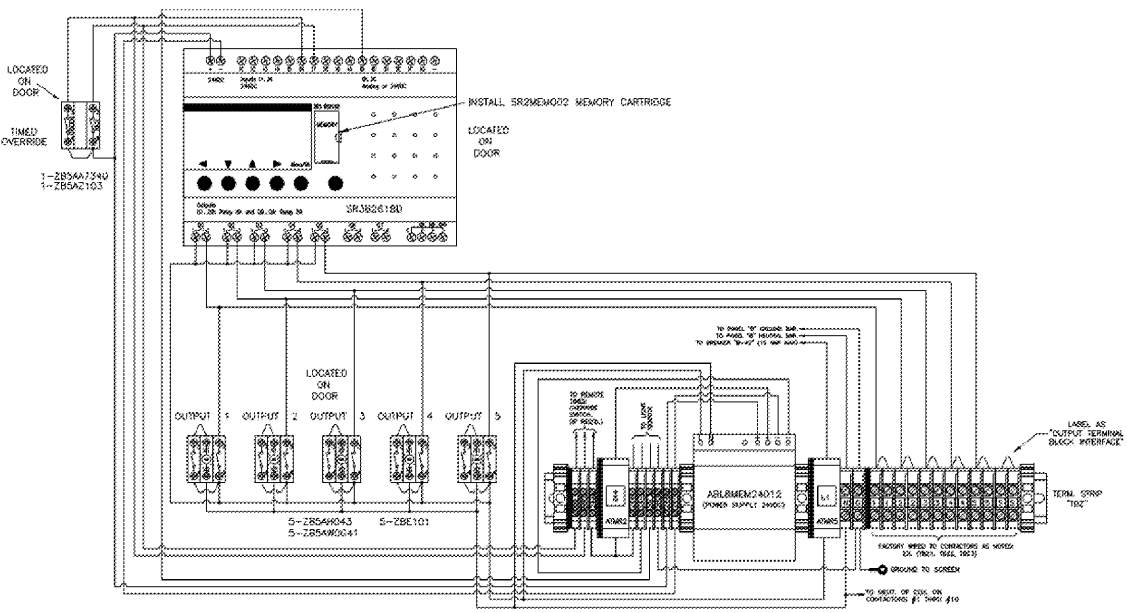


5 LIGHTING CONTACTOR DETAIL  
N.T.S.



1 SPD WIRING DETAIL  
N.T.S.

120/208 VOLT COLOR CHART	
NOTE	BRANCH CIRCUIT WIRING DONE BY SQUARE D IPaCS WILL BE COLOR CODED!
A PHASE - BLACK WIRE	
B PHASE - RED WIRE	
C PHASE - BLUE WIRE	
**ALL SINGLE PHASE WIRING IN BLACK**	
ALL WIRING ABOVE #10 AWG TO BE PHASE COLORED ON EACH END.	
NOTE:	BEFORE WIRING BRANCH CIRCUITS REFER TO PANELBOARD SCHEDULES TO DETERMINE THE PHASE COLORS TO BE USED.
	* ALL MAIN DISCONNECT AND BRANCH CIRCUIT PROTECTION SHALL BE AS SCHEDULED ON SHEET E410 & E411.



2 CONTACTOR CONTROL WIRING  
12" = 1'-0"

Order Plans @

**Racetrac**  
 THESE PLANS ARE SUBJECT TO FEDERAL COPYRIGHT LAWS: ANY USE OF SAME WITHOUT THE EXPRESSED WRITTEN PERMISSION OF RACETRAC PETROLEUM, INC. IS PROHIBITED. 2018 RACETRAC PETROLEUM, INC.  
**DESIGN PROFESSIONALS**  
**HR**  
 HILLFOLEYROSS & ASSOCIATES  
 ARCHITECTURE  
 ENGINEERING  
 3680 Pleasant Hill Road  
 Suite 200  
 Duluth, Georgia 30096  
 p 770.622.9858  
 f 770.622.9535  
 www.hillfoleyross.com

**ISSUE/REVISION RECORD**

DATE	DESCRIPTION
2018.08.22	PERMIT ISSUE

**Racetrac**  
 RACETRAC PETROLEUM, INC.  
 200 GALLERIA PKWY SE  
 SUITE 900  
 ATLANTA, GEORGIA 30339  
 (770) 431-7600

**PROJECT NAME**  
**GRIFFIN**

**GRIFFIN**  
 GEORGIA  
 1638 US HWY 41  
 GRIFFIN, GA 30223

**RACETRAC PROJECT NUMBER**  
**#1242**  
**PROTOTYPE SERIES 5.5K 2.0**  
**2018 LH MO**

**PLAN MODIFICATION NOTICE**

STANDARD PLAN BULLETINS (SPB) MODIFY THE PROTOTYPE SERIES SET NOTED ABOVE. THE LISTED SPB REPRESENTS THE LATEST MODIFICATION INCORPORATED TO THIS PROTOTYPE SERIES SET AT ORIGINAL RELEASE. THE ISSUE/REVISION RECORD COLUMN ABOVE LISTS ANY REVISIONS OR SPB INCORPORATED IN THIS SET AFTER THE ORIGINAL RELEASE. CONTACT RACETRAC ENGINEERING AND CONSTRUCTION FOR ANY SUBSEQUENT BULLETINS NOT INCORPORATED HEREIN.

**PROFESSIONAL SEAL**

08/22/18

**PROJECT NUMBER**  
 17.721.00

**SHEET TITLE**  
**CONTROL DIAGRAMS**

**SHEET NUMBER**  
**E502**  
 ISSUED FOR PERMIT