

ISSUE/REVISION RECORD

| DATE | DESCRIPTION |
|------------|--------------|
| 2018.08.22 | PERMIT ISSUE |
| | |
| | |
| | |
| | |
| | |
| | |
| | |
| | |
| | |

PROJECT NAME
GRIFFIN

GRIFFIN
 GEORGIA
 1638 US HWY 41
 GRIFFIN, GA 30223

RACETRAC PROJECT NUMBER
#1242

PROTOTYPE SERIES 5.5K 2.0
 2018 LH MO

PLAN MODIFICATION NOTICE

| SPB NO. | DATE |
|---------|------|
| | |
| | |
| | |
| | |
| | |

PROFESSIONAL SEAL



PROJECT NUMBER
 17.721.00

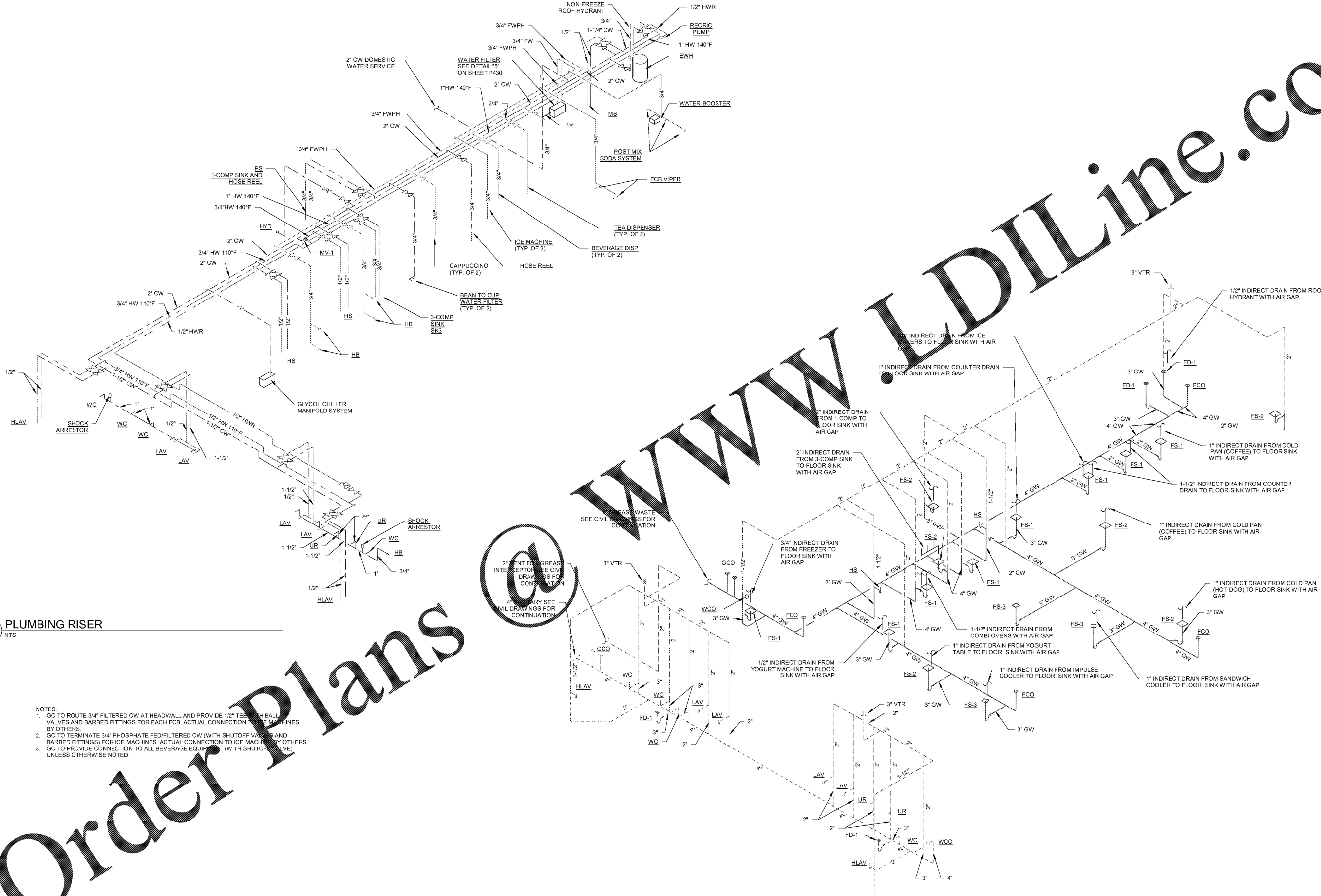
SHEET TITLE

PLUMBING ISOMETRICS

SHEET NUMBER

P410

ISSUED FOR PERMIT



2 PLUMBING RISER
 NTS

1 PLUMBING ISOMETRIC
 NTS

- NOTES:
- GC TO ROUTE 3/4" FILTERED CW AT HEADWALL AND PROVIDE 1/2" TEE WITH BALL VALVES AND BARBED FITTINGS FOR EACH FCB. ACTUAL CONNECTION TO BE MADE BY OTHERS.
 - GC TO TERMINATE 3/4" PHOSPHATE FED/FILTERED CW (WITH SHUTOFF VALVE) AND BARBED FITTINGS) FOR ICE MACHINES. ACTUAL CONNECTION TO ICE MACHINES BY OTHERS.
 - GC TO PROVIDE CONNECTION TO ALL BEVERAGE EQUIPMENT (WITH SHUTOFF VALVE) UNLESS OTHERWISE NOTED.

Order Plans

WWW.LDILine.com