

© Copyright (as dated herein)
 This drawing and all reproduction thereof are the property of
 Hillfoley Ross & Associates, LLC (HRA). It is intended for the
 sole use of the project named herein. Reproduction without the
 written consent of HRA is prohibited. All rights are to be
 reserved by HRA in any project completion.

ISSUE/REVISION RECORD

DATE	DESCRIPTION
2018.08.22	PERMIT ISSUE

PROJECT NAME
GRIFFIN

GRIFFIN
 GEORGIA
 1638 US HWY 41
 GRIFFIN, GA 30223

RACETRAC PROJECT NUMBER
#1242

PROTOTYPE SERIES 5.5K 2.0
 2018 LH MO

PLAN MODIFICATION NOTICE

SPB NO. DATE

STANDARD PLAN BULLETINS (SPB) MODIFY THE
 PROTOTYPE SERIES SET NOTED ABOVE. THE
 LISTED SPB REPRESENTS THE LATEST
 MODIFICATION INCORPORATED TO THIS
 PROTOTYPE SERIES SET AT ORIGINAL RELEASE.
 THE ISSUE/REVISION RECORD COLUMN ABOVE
 LISTS ANY REVISIONS OR SPB INCORPORATED
 IN THIS SET AFTER THE ORIGINAL RELEASE.
 CONTACT RACETRAC ENGINEERING AND
 CONSTRUCTION FOR ANY SUBSEQUENT
 BULLETINS NOT INCORPORATED HEREIN.

PROFESSIONAL SEAL

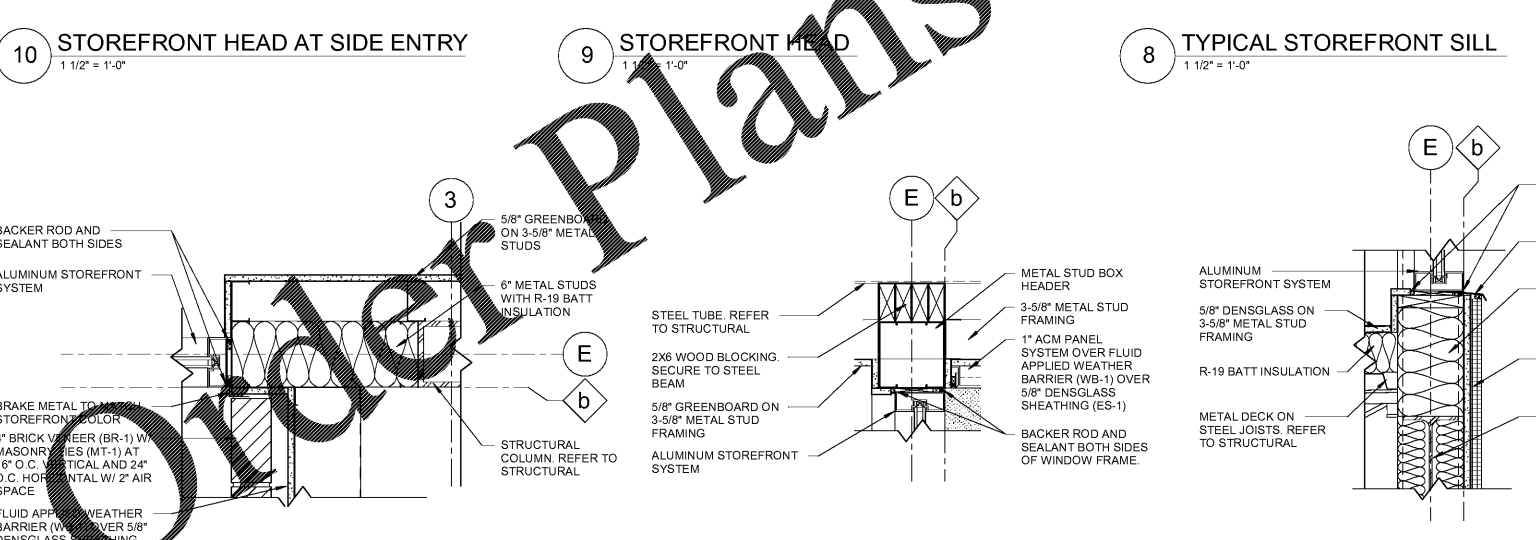
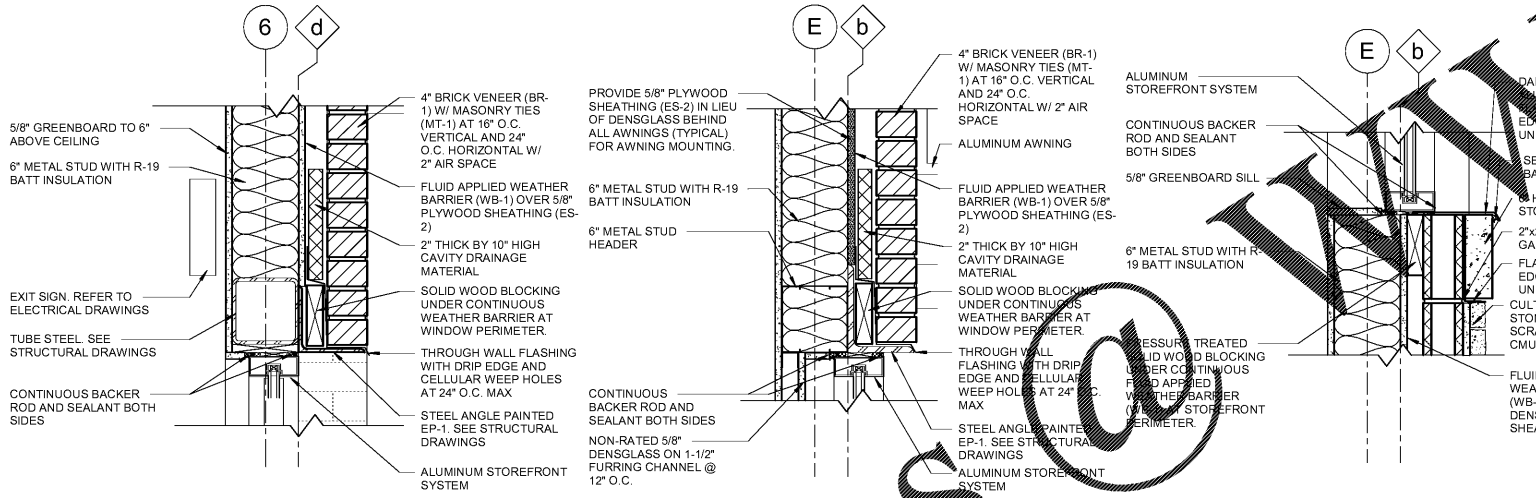
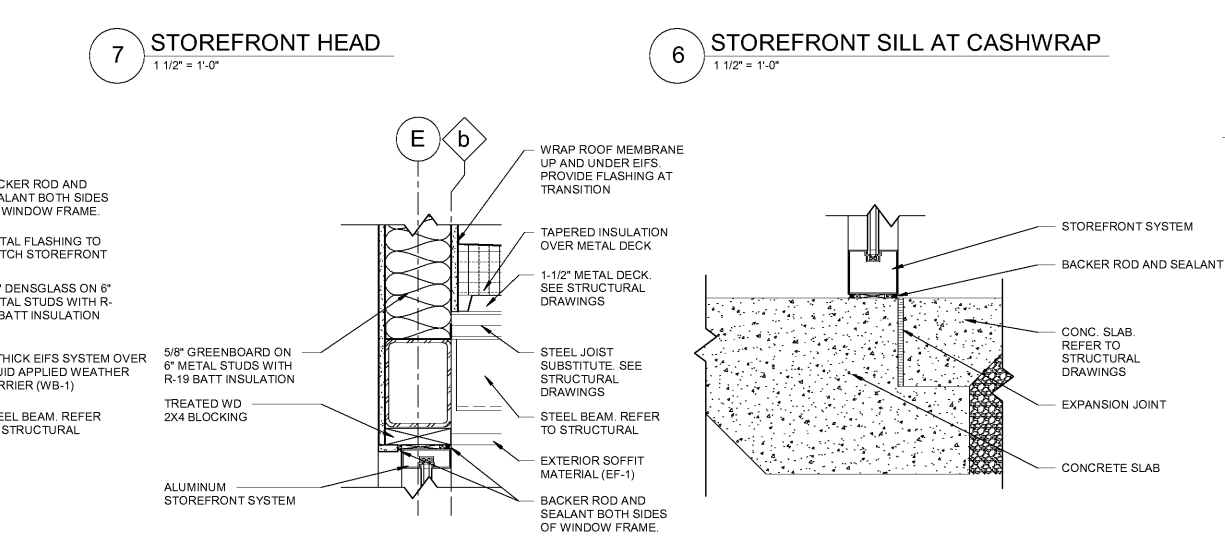
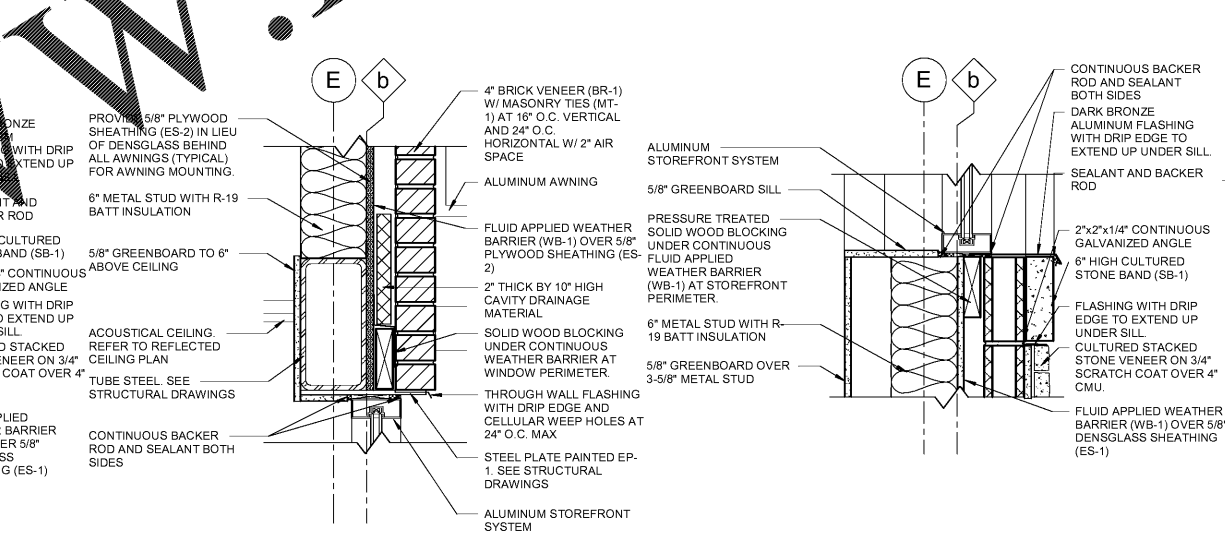
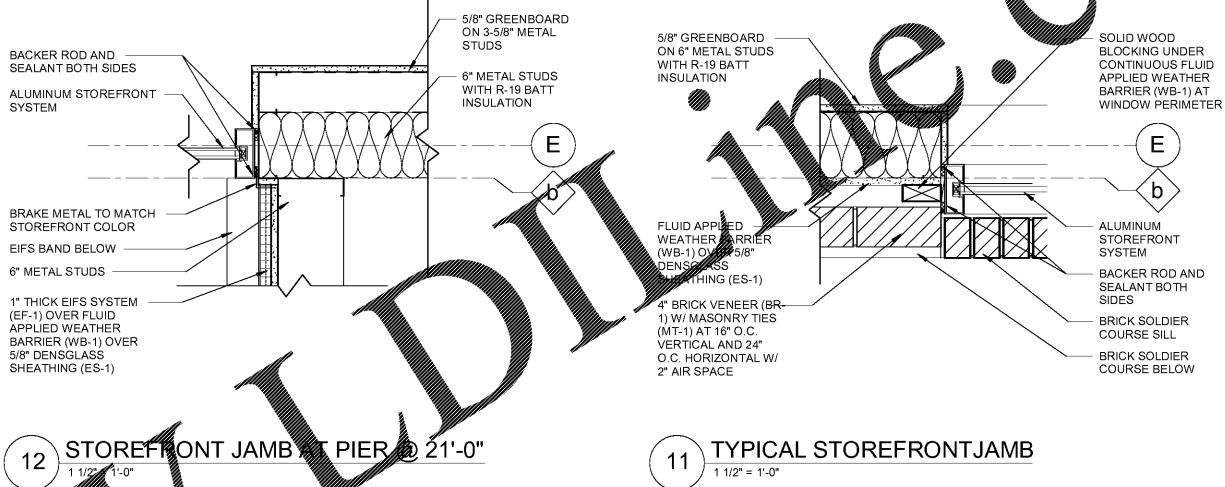


PROJECT NUMBER
 17.721.00

SHEET TITLE
WINDOW DETAILS

SHEET NUMBER
A601

ISSUED FOR PERMIT



5 STOREFRONT JAMB AT PIER 1 1/2" = 1'-0"
4 STOREFRONT HEAD AT MAIN TOWER 1 1/2" = 1'-0"
3 STOREFRONT SILL AT MAIN TOWER 1 1/2" = 1'-0"
2 STOREFRONT HEAD AT MAIN TOWER 1 1/2" = 1'-0"
1 WINDOW SILL - DETAIL 1 1 1/2" = 1'-0"
6 STOREFRONT SILL AT CASHWRAP 1 1/2" = 1'-0"
7 STOREFRONT HEAD 1 1/2" = 1'-0"
8 TYPICAL STOREFRONT SILL 1 1/2" = 1'-0"
9 STOREFRONT HEAD 1 1/2" = 1'-0"
10 STOREFRONT HEAD AT SIDE ENTRY 1 1/2" = 1'-0"
11 TYPICAL STOREFRONT JAMB 1 1/2" = 1'-0"
12 STOREFRONT JAMB AT PIER @ 21'-0" 1 1/2" = 1'-0"

Order Plans