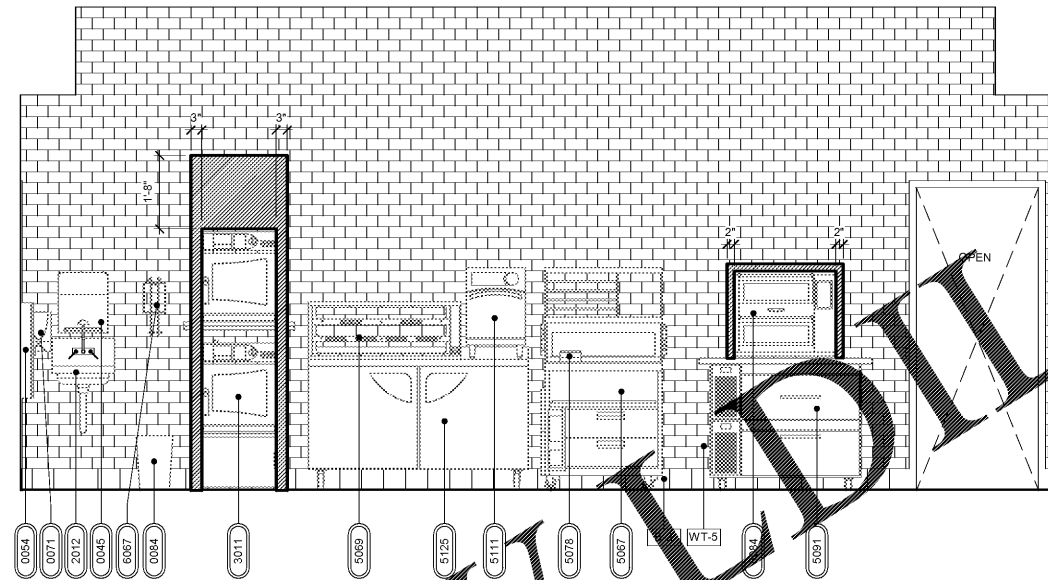
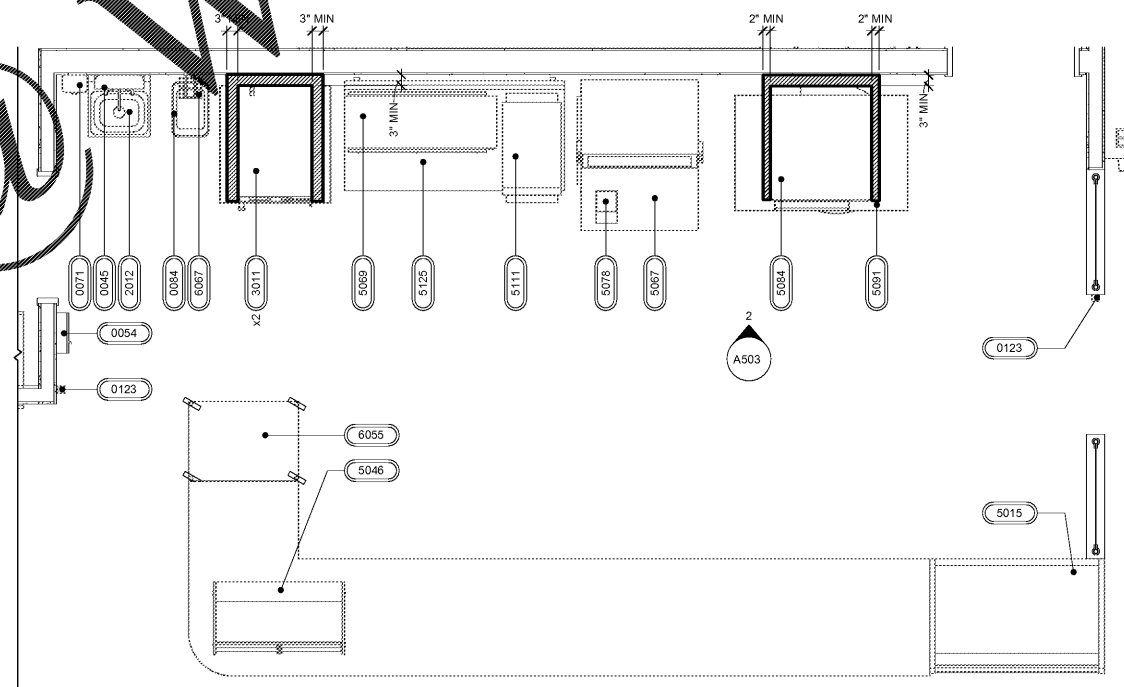


Order Plans



2 BACK OF FOOD BAR ELEVATION CLEARANCES  
1/2" = 1'-0"



1 FOOD AREA PLAN CLEARANCES  
1/2" = 1'-0"

GENERAL NOTES

1. ALL FINISH FLOOR ELEVATIONS TAKEN FROM TOP OF TILE.
2. ALL INTERIOR METAL STUDS ARE 3-5/8" UNLESS NOTED OTHERWISE.
3. ALL GYPSUM BOARD TO BE 5/8" THICK GREENBOARD UNLESS NOTED OTHERWISE.
4. INSTALL GYPSUM BOARD ON OUTSIDE FACES OF WALK-IN COOLERS.
5. PROVIDE DRYWALL FINISH LEVEL 4 WHERE FLAT PAINTS, LIGHT FIXTURES OR WALL COVERINGS ARE TO BE APPLIED.
6. PROVIDE DRYWALL FINISH LEVEL 5 WHERE GLOSS, SEMI-GLOSS, ENAMEL, OR NON-TEXTURED FLAT PAINTS ARE SPECIFIED OR WHERE SEVERE LIGHTING CONDITIONS OCCUR.
7. ALL SELF-SERVICE STATIONS SHALL BE DESIGNED TO HAVE A MAX. REACH HEIGHT OF 48" AS MEASURED TO THE HIGHEST OPERABLE PART.
8. COFFEE, FROZEN DRINK DISPENSER, AND YOGURT MACHINES TO COMPLY WITH THE REACH RANGES OF 15" LOW AND 48" HIGH PER 2010 ADA STANDARDS SECTION 904.5.1.
9. SEE SHEET A500 FOR FINISH AND MATERIAL SCHEDULE.
10. SEE SHEET A141 FOR EQUIPMENT SCHEDULE.
11. ALL SHELVING SHALL BE INSTALLED BY RACETRAC VENDOR.

EQUIPMENT CLEARANCE FINISH

= AREA OF REQUIRED CLEARANCE

**RaceTrac**  
 THESE PLANS ARE SUBJECT TO FEDERAL COPYRIGHT LAWS; ANY USE OF SAME WITHOUT THE EXPRESSED WRITTEN PERMISSION OF RACETRAC PETROLEUM, INC. IS PROHIBITED. 2018 RACETRAC PETROLEUM, INC.

**DESIGN PROFESSIONALS**  
**HILLFOLEYROSS & ASSOCIATES**  
 ARCHITECTURE  
 ENGINEERING  
 3680 Pleasant Hill Road  
 Suite 200  
 Duluth, Georgia 30096  
 p 770.622.9858  
 f 770.622.9535  
 www.hillfoleyross.com

ISSUE/REVISION RECORD

DATE	DESCRIPTION
2018.08.22	PERMIT ISSUE

**RaceTrac**  
 RACETRAC PETROLEUM, INC.  
 200 GALLERIA PKWY SE  
 SUITE 900  
 ATLANTA, GEORGIA 30339  
 (770) 431-7600

PROJECT NAME  
**GRIFFIN**

**GRIFFIN**  
 GEORGIA  
 1638 US HWY 41  
 GRIFFIN, GA 30223

RACETRAC PROJECT NUMBER  
**#1242**

PROTOTYPE SERIES 5.5K 2.0  
 2018 LH MO

PLAN MODIFICATION NOTICE

SPB NO.	DATE
---------	------

STANDARD PLAN BULLETINS (SPB) MODIFY THE PROTOTYPE SERIES SET NOTED ABOVE. THE LISTED SPB REPRESENTS THE LATEST MODIFICATION INCORPORATED TO THIS PROTOTYPE SERIES SET AT ORIGINAL RELEASE. THE ISSUE/REVISION RECORD COLUMN ABOVE LISTS ANY REVISIONS OR SPB INCORPORATED IN THIS SET AFTER THE ORIGINAL RELEASE. CONTACT RACETRAC ENGINEERING AND CONSTRUCTION FOR ANY SUBSEQUENT BULLETINS NOT INCORPORATED HEREIN.

PROFESSIONAL SEAL



PROJECT NUMBER  
 17.721.00

SHEET TITLE

**EQUIPMENT CLEARANCES**

SHEET NUMBER

**A503**

ISSUED FOR PERMIT