



**ARCHITECTURE  
 ENGINEERING**  
 3680 Pleasant Hill Road  
 Suite 200  
 Duluth, Georgia 30096  
 p 770.622.9858  
 f 770.622.9535  
 www.hillfoleyross.com

© Copyright (as dated below)  
 This drawing and all reproduction thereof are the property of  
 Hill Foley Ross & Associates, LLC (HFR) and shall remain the  
 sole use of the project and not be loaned, reproduced or  
 otherwise used in any way without the written consent of HFR.

**ISSUE/REVISION RECORD**

DATE	DESCRIPTION
2018.08.22	PERMIT ISSUE



**RACETRAC PETROLEUM, INC.**  
 200 GALLERIA PKWY SE  
 SUITE 900  
 ATLANTA, GEORGIA 30339  
 (770) 431-7600

**PROJECT NAME**

**GRIFFIN**

**GRIFFIN  
 GEORGIA  
 1638 US HWY 41  
 GRIFFIN, GA 30223**

**RACETRAC PROJECT NUMBER**

**#1242**

**PROTOTYPE SERIES 5.5K 2.0**

**2018 LH MO**

**PLAN MODIFICATION NOTICE**

**SPB NO. DATE**

STANDARD PLAN BULLETINS (SPB) MODIFY THE  
 PROTOTYPE SERIES SET NOTED ABOVE. THE  
 LISTED SPB REPRESENTS THE LATEST  
 MODIFICATION INCORPORATED TO THIS  
 PROTOTYPE SERIES SET AT ORIGINAL RELEASE.  
 THE ISSUE/REVISION RECORD COLUMN ABOVE  
 LISTS ANY REVISIONS OR SPB INCORPORATED IN  
 THIS SET AFTER THE ORIGINAL RELEASE.  
 CONTACT RACETRAC ENGINEERING AND  
 CONSTRUCTION FOR ANY SUBSEQUENT  
 BULLETINS NOT INCORPORATED HEREIN.

**PROFESSIONAL SEAL**



**PROJECT NUMBER**

17.721.00

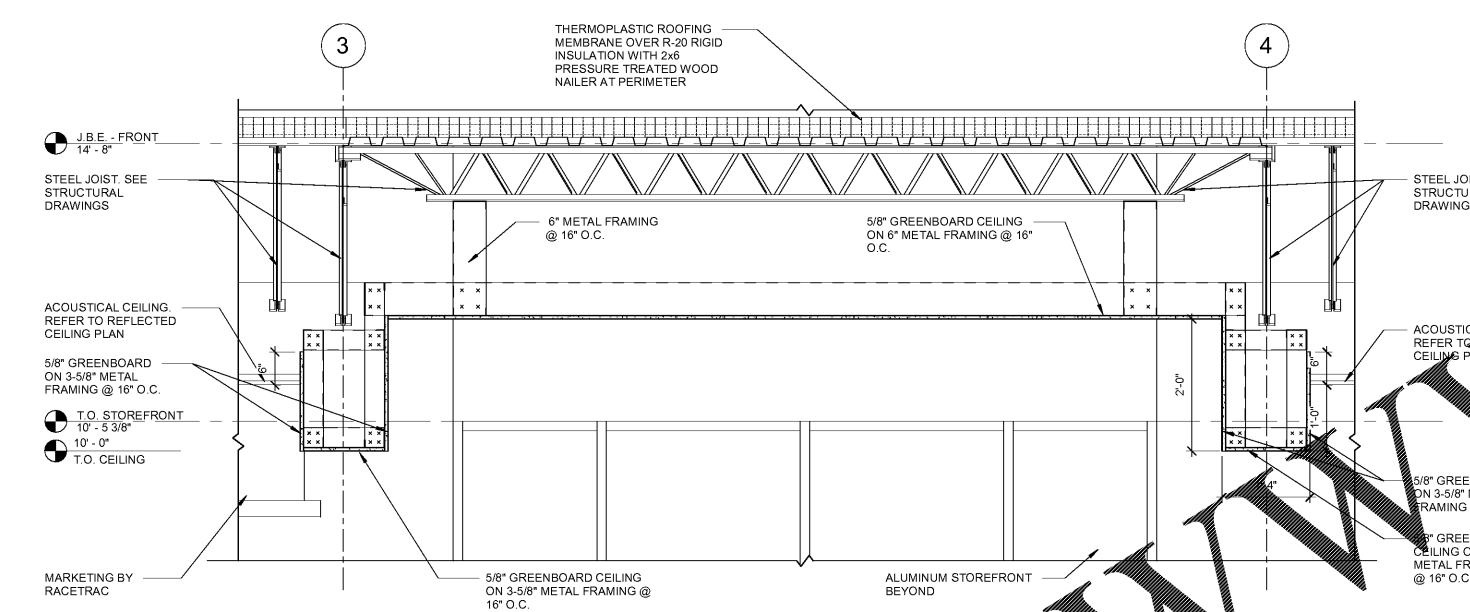
**SHEET TITLE**

**WALL SECTIONS**

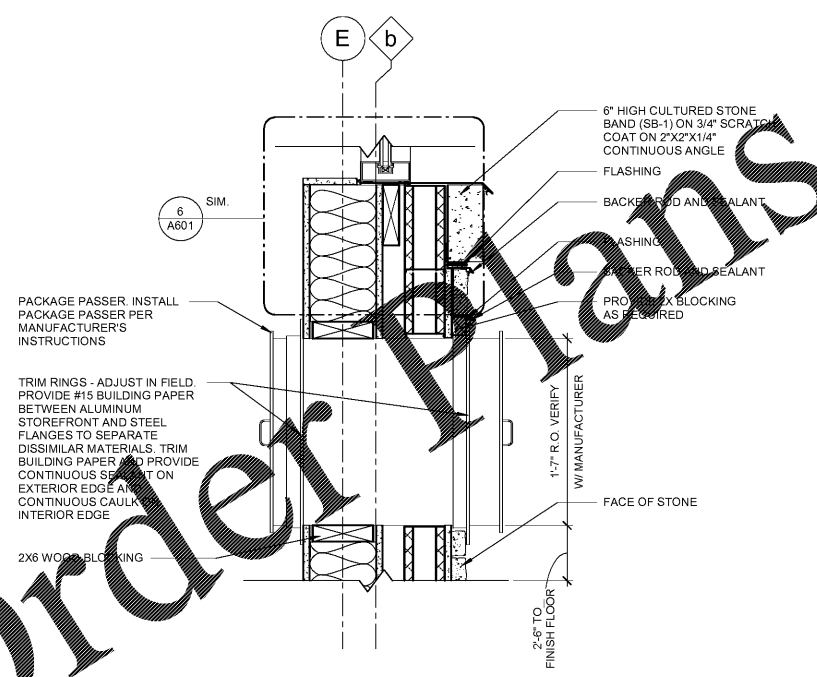
**SHEET NUMBER**

**A411**

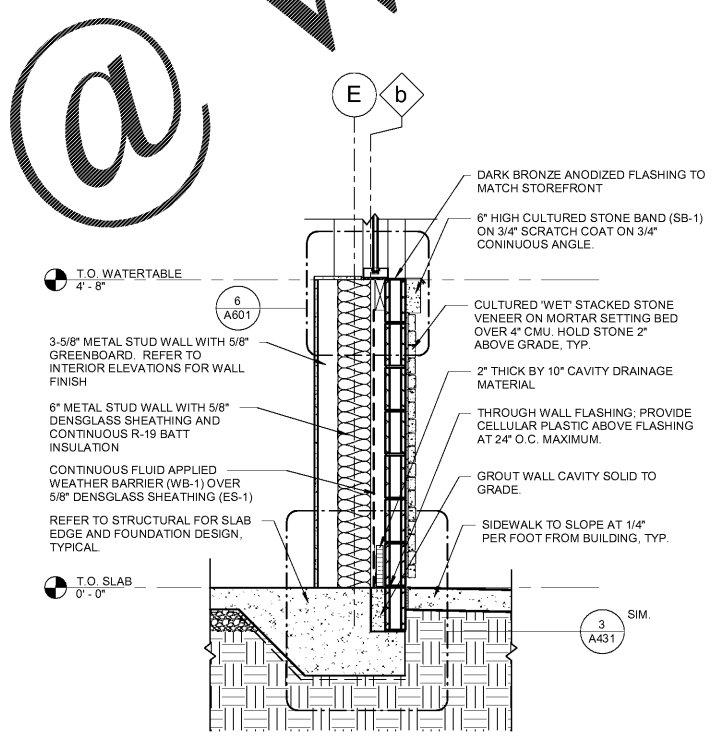
ISSUED FOR PERMIT



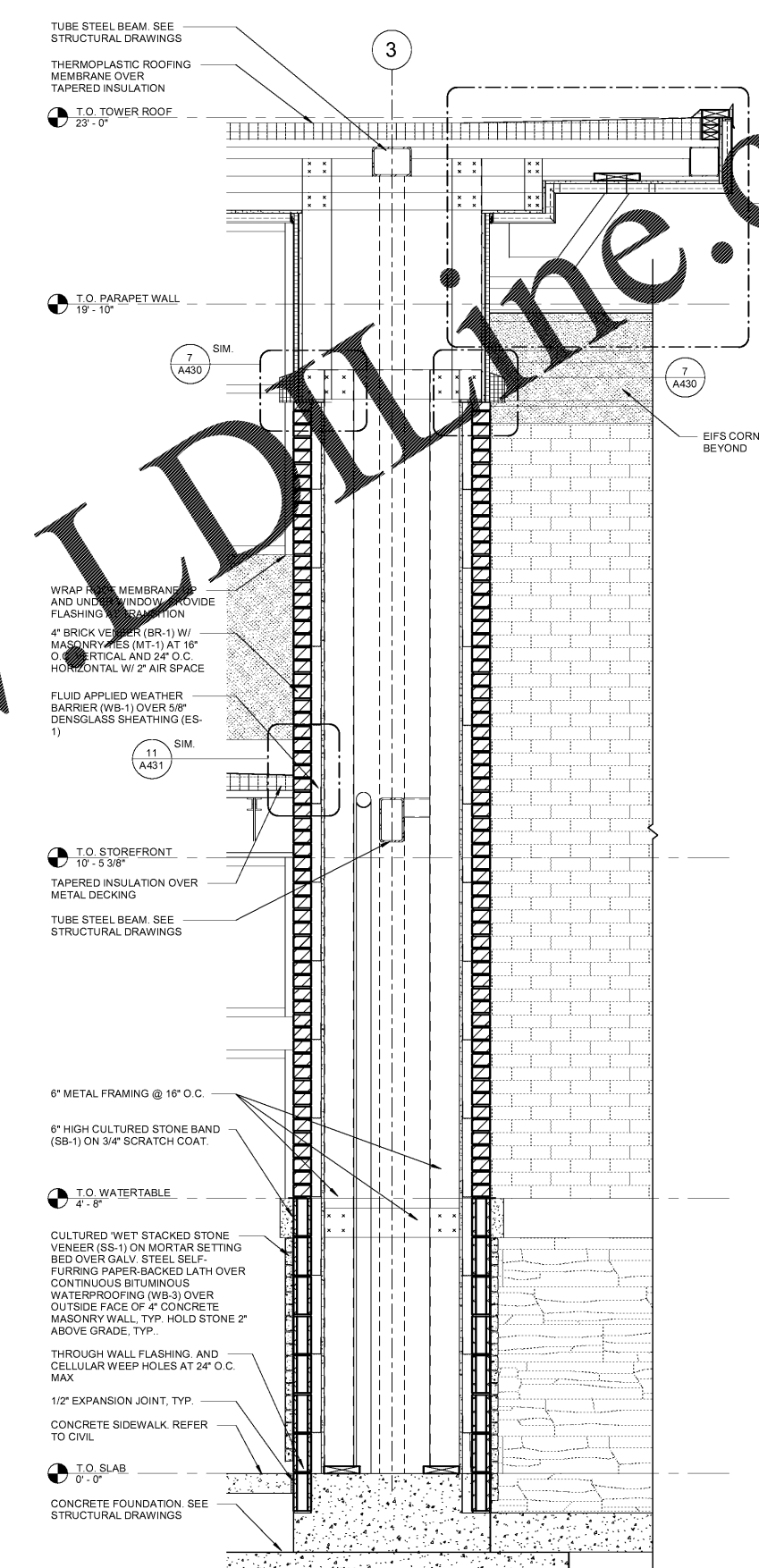
**4 SALES AREA CROSS SECTION**  
 3/4" = 1'-0"



**3 PACKAGE PASSER**  
 1 1/2" = 1'-0"



**2 FRONT WALL SECTION**  
 3/4" = 1'-0"



**1 TYPICAL PIER CROSS SECTION**  
 3/4" = 1'-0"

**Order Plans**

**WWW**

**@**

**Online.com**